



Illustrated Parts List

Model Series

21A900

TYPE NUMBERS
0101 through 0199.

TABLE OF CONTENTS

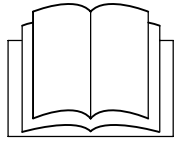
Air Cleaner	7
Alternator	10
Blower Housing	7
Camshaft	3
Carburetor	5, 6
Controls	9
Crankshaft	3
Cylinder	2
Cylinder Head	4
Electric Starter	8
Engine Sump	2
Exhaust System	7
Flywheel	8
Fuel Supply	9
Gasket Set - Engine	4
Gasket Set - Valve	4
Governor Spring	9
Ignition	9
Intake Manifold	4
Kit - Carburetor Overhaul	5
Lubrication	3
Operator's Manual	2
Piston, Rings, Connecting Rod	3
Rewind Starter	8
Valves	4
Warning Label	2

PRINTED IN U.S.A.



COPYRIGHT by BRIGGS & STRATTON CORPORATION
All rights reserved. No part of this material may be reproduced or transmitted,
in any form or by any means, electronic or mechanical, including photocopying,
recording or by any information storage and retrieval system, without permission
in writing from Briggs & Stratton Corporation.

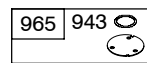
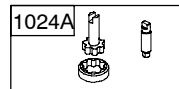
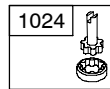
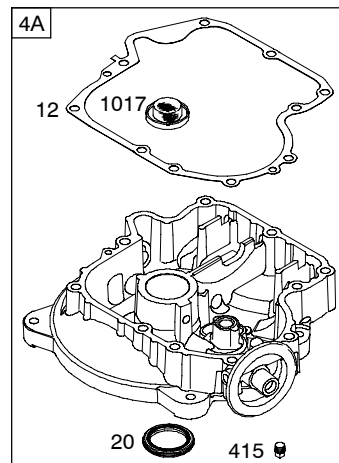
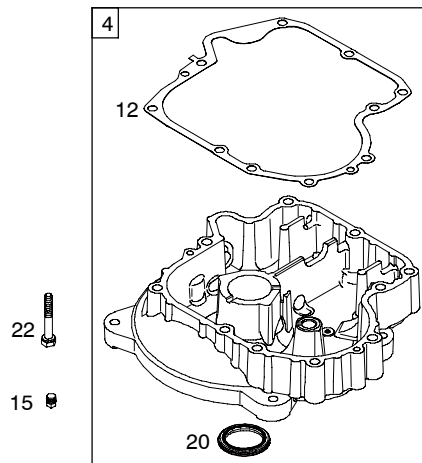
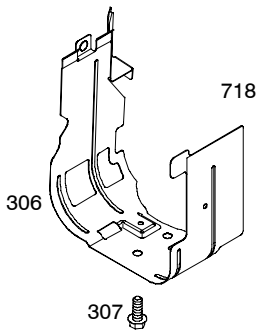
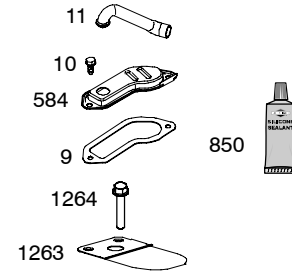
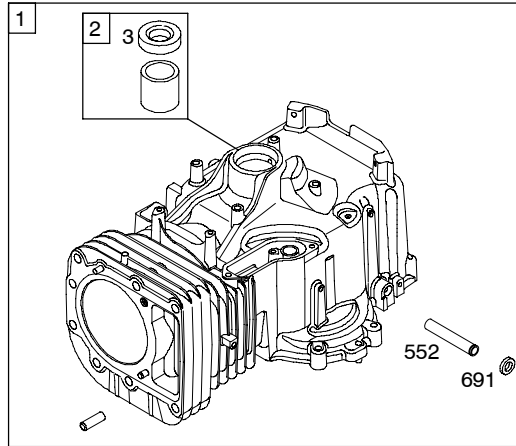
1058 OPERATOR'S MANUAL



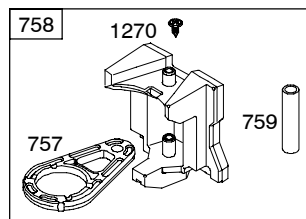
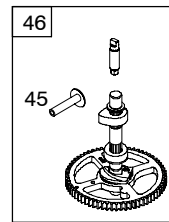
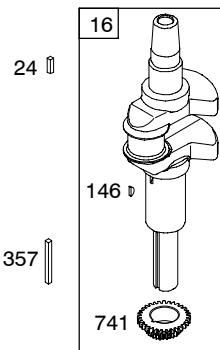
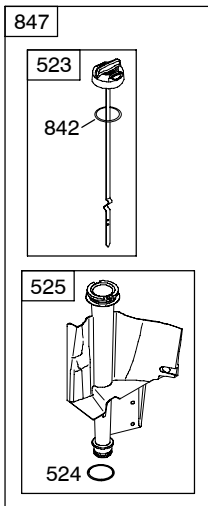
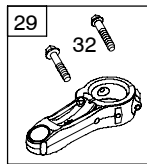
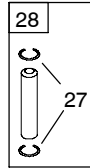
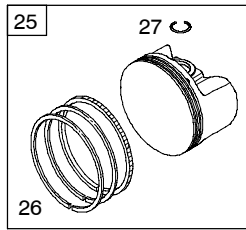
1319 WARNING LABEL

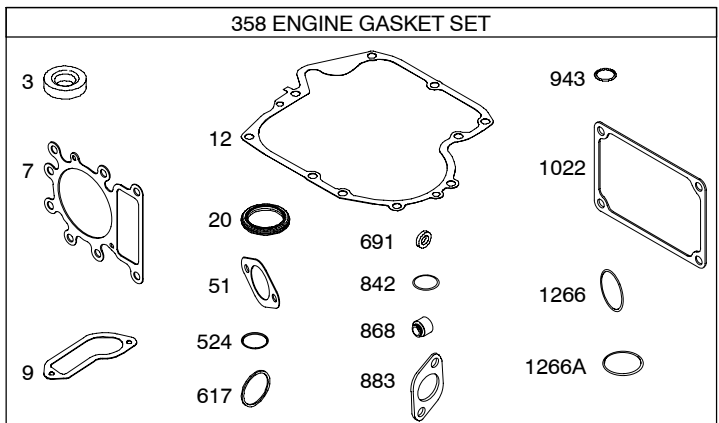
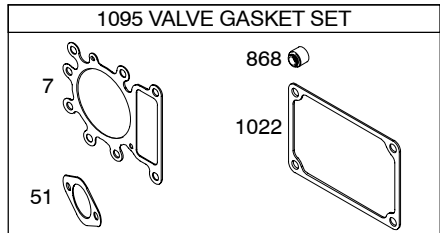
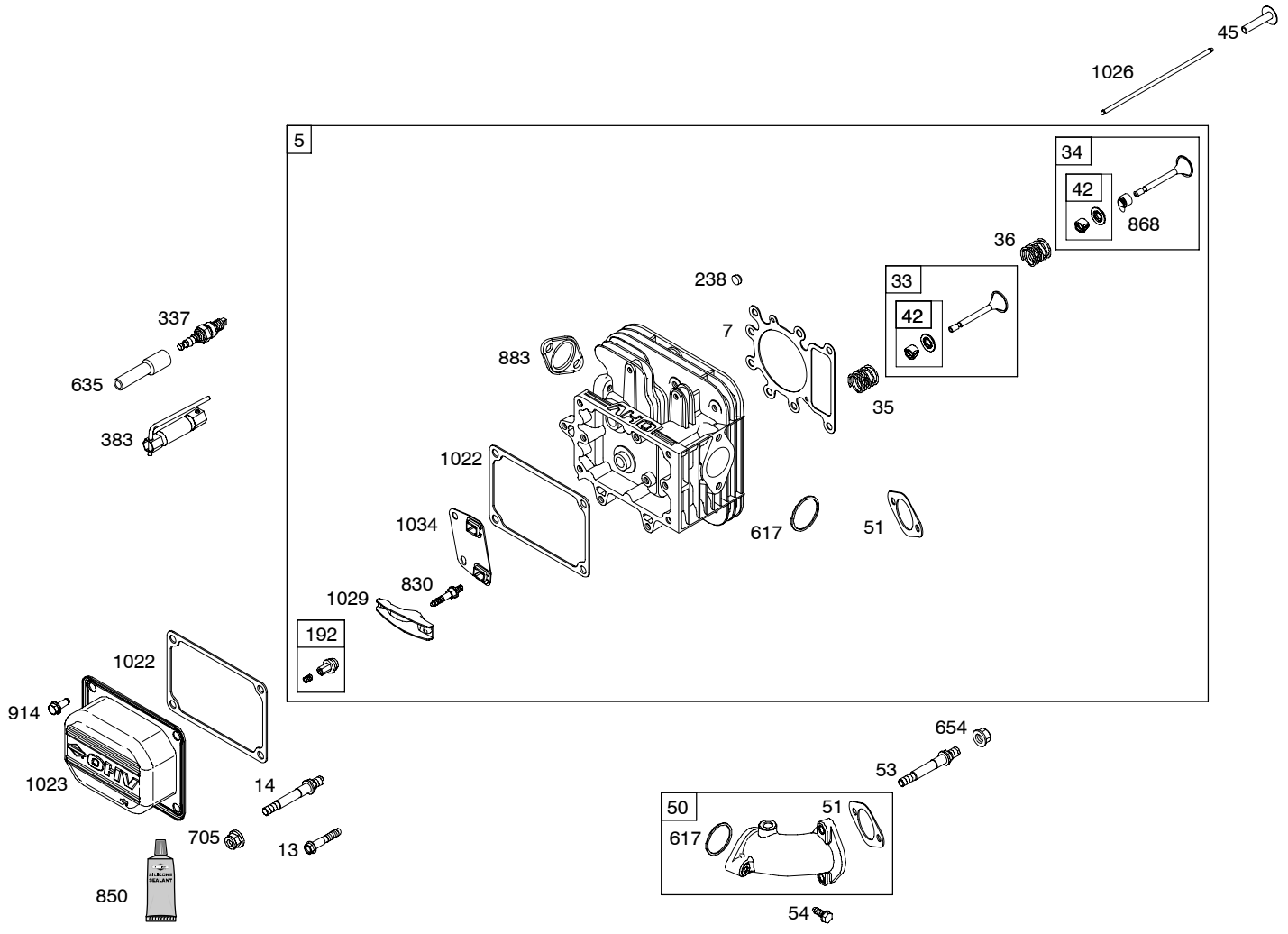
WARNING	
	Read and follow Operating Instructions before running engine.
	Gasoline is flammable. Allow engine to cool at least 2 minutes before refueling.
	Engines emit carbon monoxide, DO NOT run in enclosed area.
	Muffler area temperature may exceed 150°F. Do not touch hot parts.

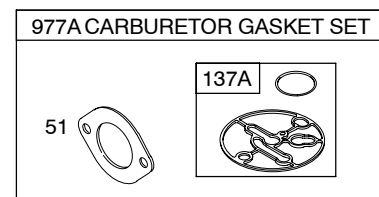
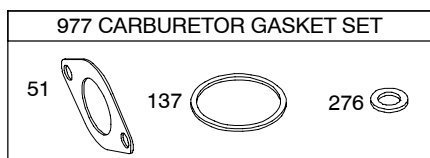
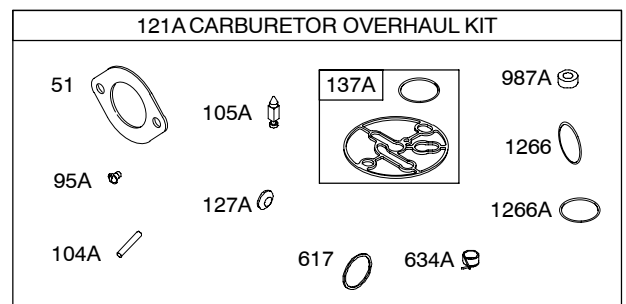
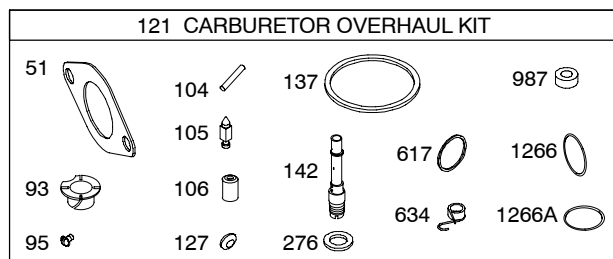
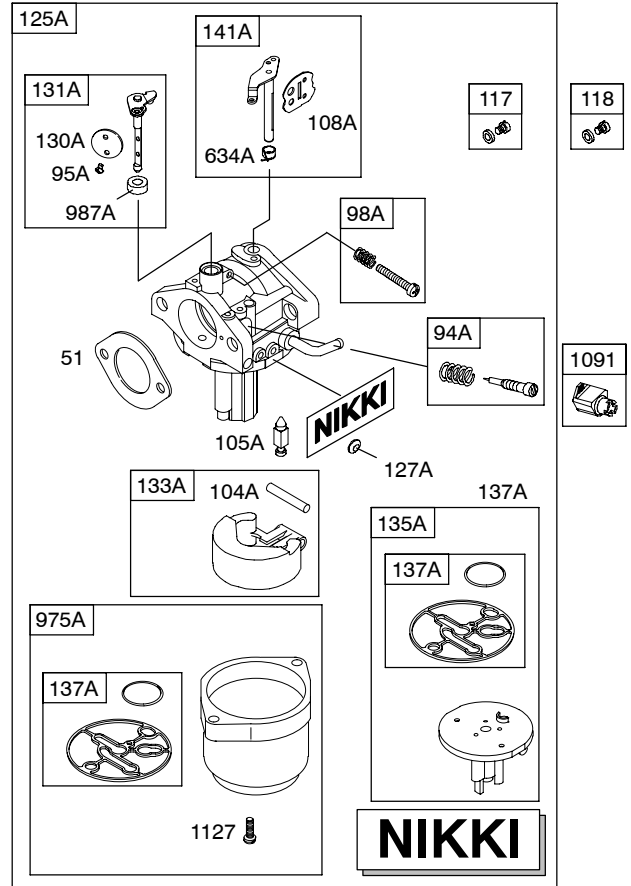
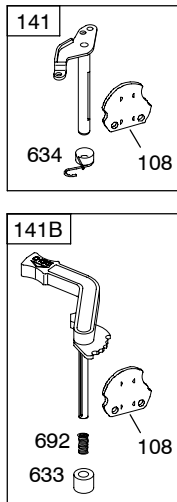
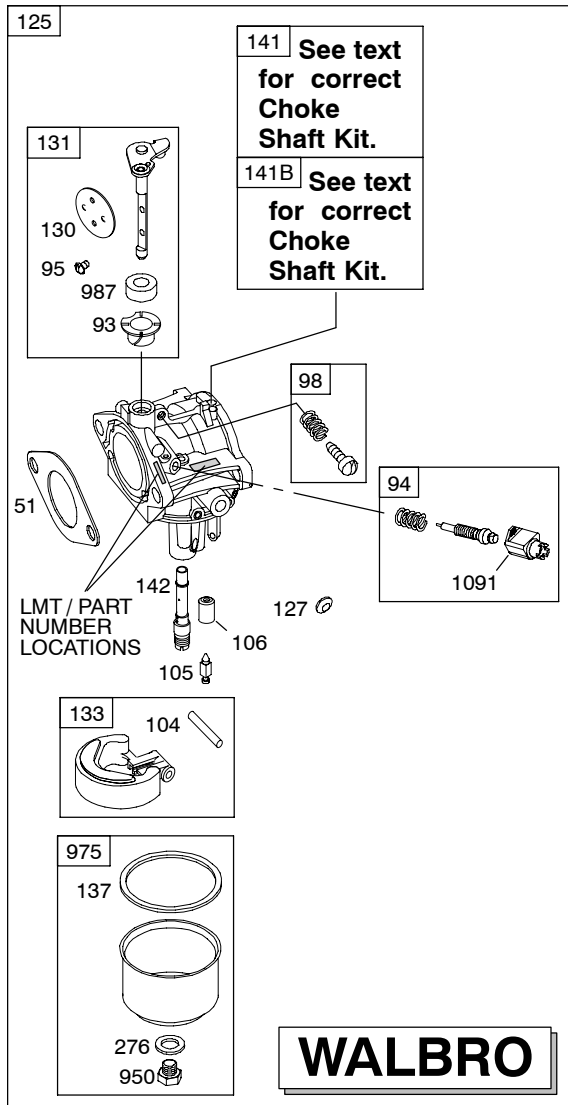
REQUIRED when replacing parts with warning labels affixed.



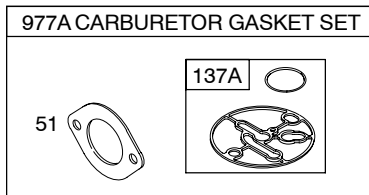
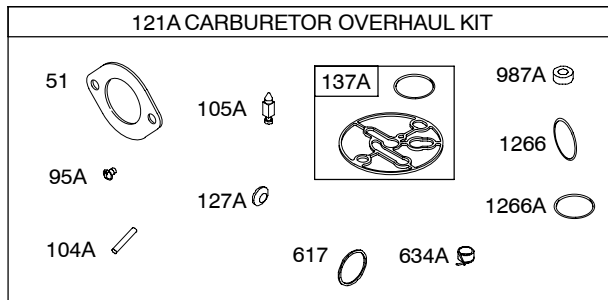
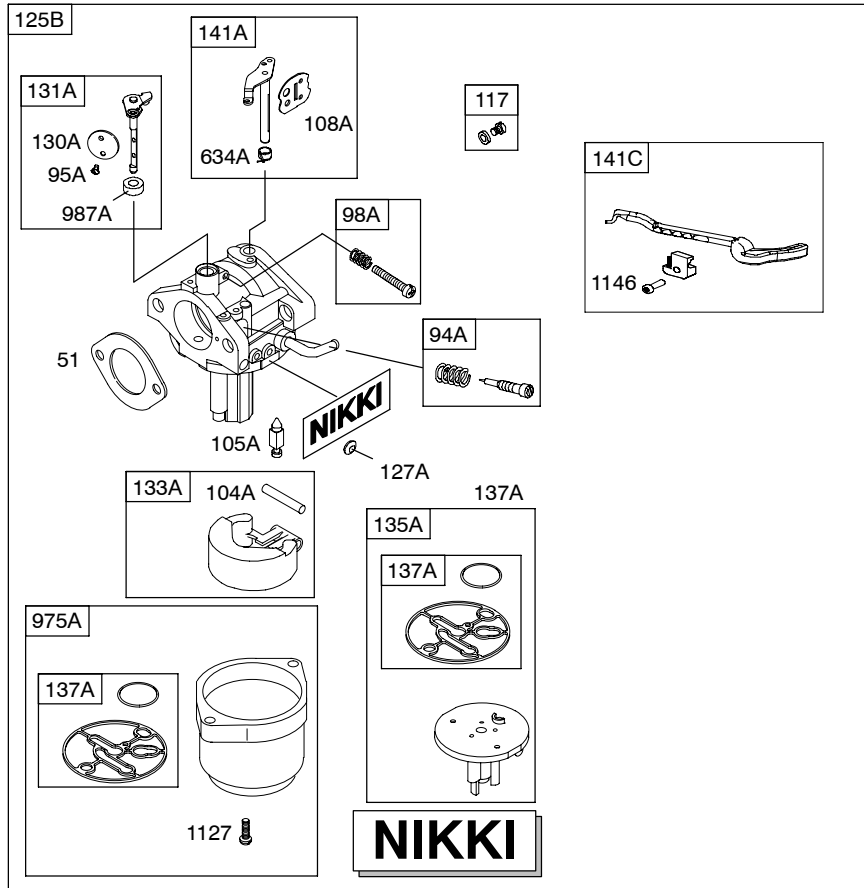
750



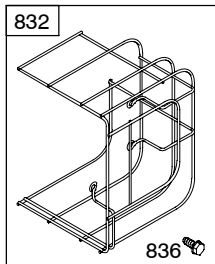
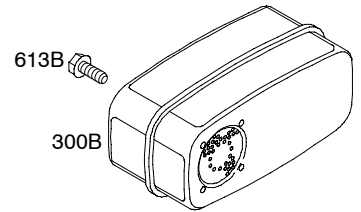
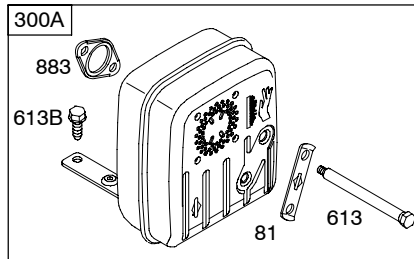
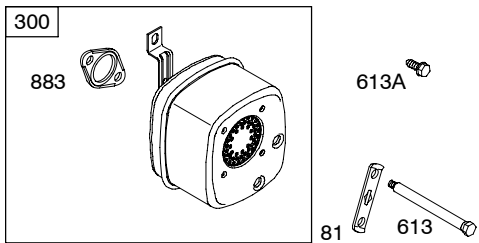
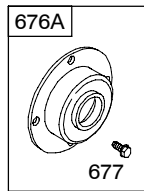
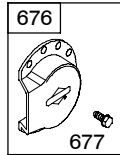
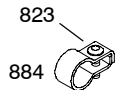
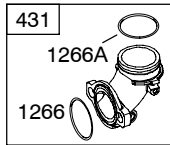
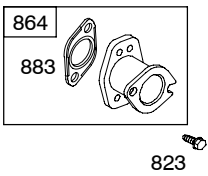
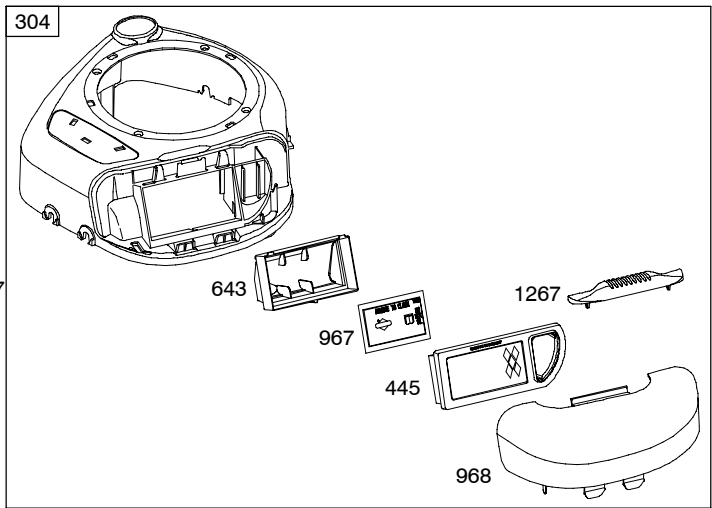
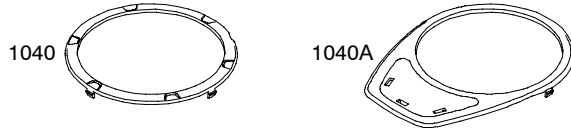




Illustrations cover a range of engines. Parts shown without corresponding text may not be used on your specific engine.

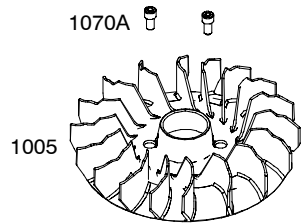
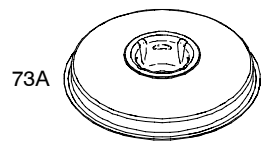
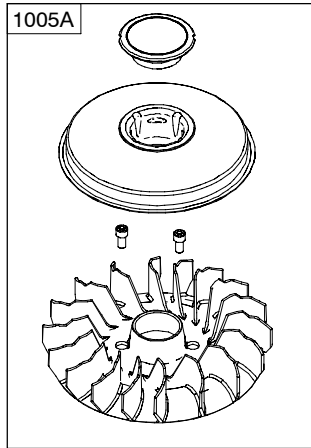
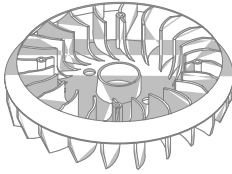


1036 EMISSIONS LABEL



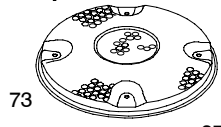
Illustrations cover a range of engines. Parts shown without corresponding text may not be used on your specific engine.
5069-7 Assemblies include all parts shown in frames. 02/07/2008

1070



75

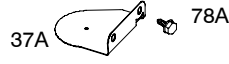
74



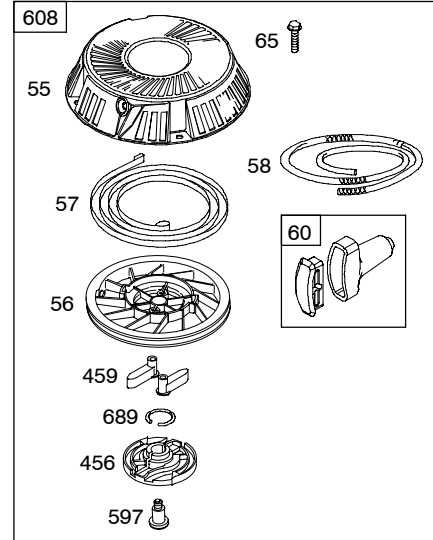
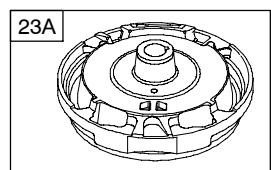
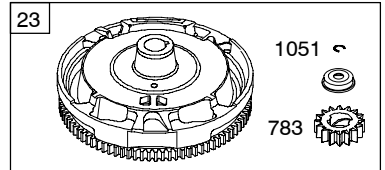
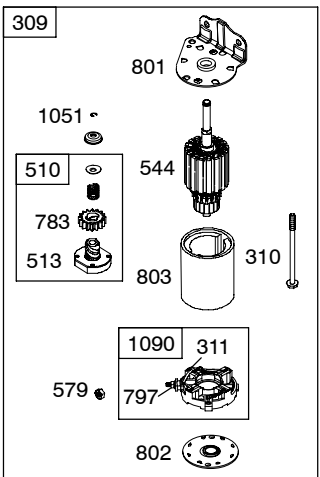
78

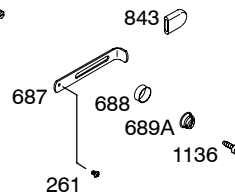
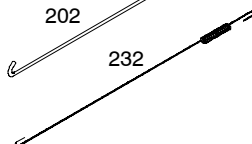
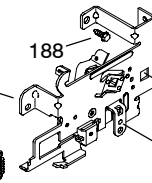
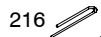
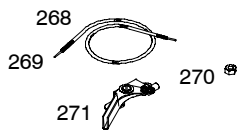
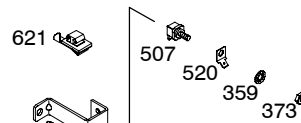
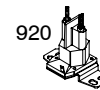
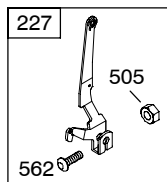
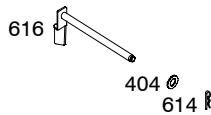
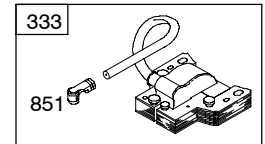
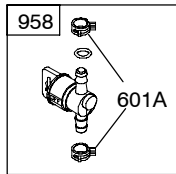
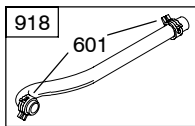
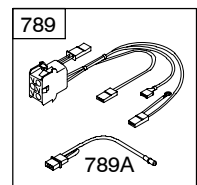
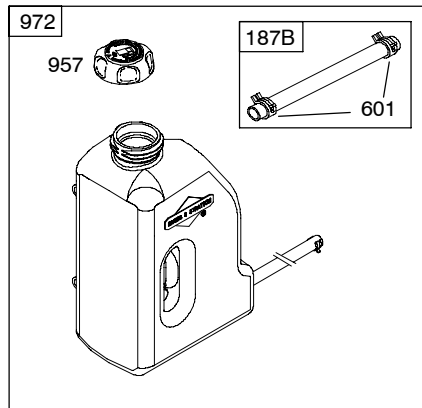
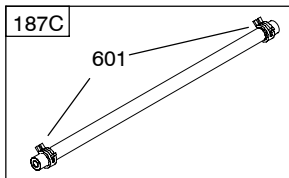
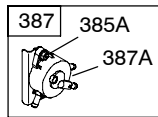
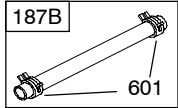
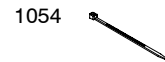
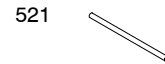
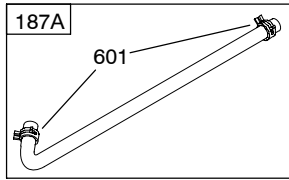
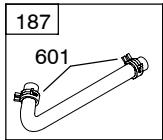
37

1044



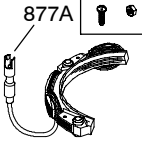
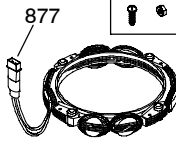
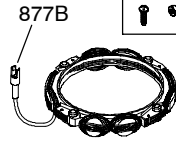
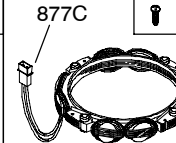
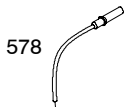

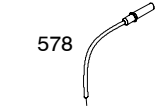
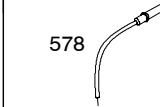
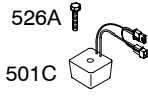
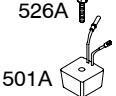
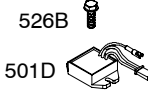
729B
729A
697






Illustrations cover a range of engines. Parts shown without corresponding text may not be used on your specific engine.

21A900

DC ONLY		DUAL CIRCUIT		5 - 9 AMP		10 - 16 AMP	
474A	1059	474B	1059	474C	1059	474D	1059
							
							
							

NOTE: All stators use a No. 1119 mounting screw. 

NOTE: The proper flywheel part number and/or the alternator magnet size will determine the alternator type or output. See repair instruction manual for additional information.

526B
501B



21A900

REF. NO.	PART NO.	DESCRIPTION	REF. NO.	PART NO.	DESCRIPTION	REF. NO.	PART NO.	DESCRIPTION
1	697377	Cylinder Assembly	22	692125	Screw (Crankcase Cover/Sump)	24	222698S	Key-Flywheel
2	399265	Kit-Bushing/Seal (Magneto Side)	23	693556	Flywheel Used on Type No(s). 0115, 0137, 0157, 0192.	25	792305	Piston Assembly (Standard) ----- Note ----- 792728 Piston Assembly (.020" Oversize)
3	★391086S	Seal-Oil (Magneto Side)			----- Note ----- 693557 Flywheel Used on Type No(s). 0145, 0147, 0150, 0159, 0176, 0191. 698281 Flywheel Used on Type No(s). 0101, 0104, 0105, 0119, 0120, 0121, 0122, 0123, 0124, 0125, 0128, 0129, 0131, 0140, 0143, 0152, 0153, 0155, 0158, 0162, 0164, 0169, 0172, 0173, 0178, 0183, 0185, 0186, 0187. 698282 Flywheel Used on Type No(s). 0113, 0133, 0154, 0156, 0165, 0167, 0179, 0180, 0189, 0195, 0197, 0198, 0199. 790924 Flywheel Used on Type No(s). 0113, 0156, 0167.	26	792306	Ring Set (Standard) ----- Note ----- 792643 Ring Set (.020" Oversize)
4	697106	Sump-Engine				27	698469	Lock-Piston Pin (Used After Code Date 02100300). ----- Note ----- 698138 Lock-Piston Pin (Used Before Code Date 02100400).
4A	697188	Sump-Engine Used on Type No(s). 0101, 0105, 0115, 0119, 0121, 0122, 0129, 0156, 0157, 0165, 0172, 0173, 0176, 0178, 0179, 0180, 0186, 0187, 0188, 0189, 0190, 0191, 0192, 0195, 0197, 0198, 0199.				28	697099	Pin-Piston
5	792964	Head-Cylinder				29	791633	Rod-Connecting (Standard) ----- Note ----- 697262 Rod- Connecting (.020" Undersize) (Used Before Code Date 05040400).
7★△273280S		Gasket-Cylinder Head				32	791118	Screw (Connecting Rod)
9	★697109	Gasket-Breather (Used Before Code Date 07071900). (After Date Code Use Liquid Sealant Reference 850)				33	695760	Valve-Exhaust
10	697157	Screw (Breather Assembly)				34	695761	Valve-Intake
11	794683	Tube-Breather (Used After Code Date 07071800). ----- Note ----- 697113 Tube-Breather (Used Before Code Date 07071900).	23A	693555	Flywheel (Rewind Starter) Used on Type No(s). 0117, 0134, 0139, 0141, 0142, 0149, 0151, 0161, 0166, 0168, 0170, 0171, 0184, 0188, 0190. ----- Note ----- 698283 Flywheel (Rewind Starter) Used on Type No(s). 0127, 0134, 0136, 0138, 0144.	35	691279	Spring-Valve (Intake)
12	★697110	Gasket-Crankcase (.015" Thick) (Standard)				36	691279	Spring-Valve (Exhaust)
13	690360	Screw (Cylinder Head)				37	697352	Guard-Flywheel
14	790560	Stud (Cylinder Head)				37A	697626	Guard-Flywheel (Electric Start) Used on Type No(s). 0117, 0127, 0134, 0136, 0138, 0139, 0141, 0142, 0144, 0149, 0151, 0161, 0166, 0168, 0170, 0171, 0176, 0184, 0188, 0190.
15	690946	Plug-Oil Drain (3/8" Standard)						
16A	697390	Crankshaft						
20	★791892	Seal-Oil (PTO Side)						

★ Included in Engine Gasket Set-Ref. No. 358.

● Included in Carburetor Overhaul Kit-Ref. No. 121 or 121A.

◆ Included in Carburetor Gasket Set-Ref. No. 977 or 977A.

△ Included in Valve Gasket Set-Ref. No. 1095.

Illustrations cover a range of engines. Parts shown without corresponding text may not be used on your specific engine.

21A900

REF. NO.	PART NO.	DESCRIPTION	REF. NO.	PART NO.	DESCRIPTION	REF. NO.	PART NO.	DESCRIPTION
42	499586	Keeper-Valve	81	691178	Lock-Muffler Screw	125	790021	Carburetor (Walbro)
43	691968	Slinger-Governor/Oil	93	●690602	Bushing-Throttle Shaft			(Used Before Code Date 06121900).
45	690564	Tappet-Valve	94	498030	Kit-Idle Mixture (Walbro)			Used on Type No(s). 0142, 0166.
46	793880	Camshaft	94A	695425	Kit-Idle Mixture (Nikki)	125A	791266	Carburetor (Nikki)
50	697361	Manifold-Intake	95	●691636	Screw (Throttle Valve) (Walbro)			(Used Before Code Date 07122600).
51★●△	692137	Gasket-Intake	95A	●690718	Screw (Throttle Valve)(Nikki)			----- Note -----
53	690227	Stud (Carburetor)	98	495800	Kit-Idle Speed (Walbro)			794653 Carburetor (Nikki)
54	691148	Screw (Intake Manifold)	98A	695408	Kit-Idle Speed (Nikki)			(Used After Code Date 07122500).
55	695130	Housing-Rewind Starter	104	●690525	Pin-Float Hinge (Walbro)	125B	794215	Carburetor (Nikki)
56	695129	Pulley-Starter	104A	●694918	Pin-Float Hinge (Nikki)			(Used Before Code Date 07122600).
57	695131	Spring-Rewind Starter	105	●231855S	Valve-Float Needle (Walbro)			----- Note -----
58	695132	Rope-Starter	105A	●696136	Valve-Float Needle (Nikki)			794653 Carburetor (Nikki)
60	494212	Grip-Starter Rope	106	●690577	Seat-Inlet (Walbro)(Gravity Feed)	127	●694524	Plug-Welch
65	690759	Screw (Rewind Starter) (Used After Code Date 07040800).			----- Note -----	127A	●690727	Plug-Welch (Nikki)
		----- Note -----	108	691227	Valve-Choke (Walbro)	130	790024	Valve-Throttle (Walbro)
		697725 Screw (Rewind Starter) (Used Before Code Date 07040900).	108A	698773	Valve-Choke (Nikki)	130A	698774	Valve-Throttle (Nikki)
73		Screen-Rotating (Service With Flywheel Fan 794440) (Used Before Code Date 07040900).	117	699897	Jet-Main (Standard) (Used Before Code Date 07122600).	131	790901	Kit-Throttle Shaft (Walbro)
		----- Note -----			----- Note -----	131A	698776	Kit-Throttle Shaft (Nikki)
73A	794437	Screen-Rotating (Used After Code Date 07040800).			794258 Jet Main (Standard) (Used After Code Date 07122500).	133	494381	Float-Carburetor (Walbro)
74	697897	Screw (Rotating Screen) (Used Before Code Date 07040900).	118	699898	Jet-Main (High Altitude) (Used Before Code Date 07122600).	133A	694914	Float-Carburetor (Nikki)
75	690582	Washer (Flywheel)			----- Note -----	135A	698780	Tube-Fuel Transfer (Nikki)
75	690582	Washer (Flywheel)			791405 Jet Main (High Altitude) (Used After Code Date 07122500).			(Used Before Code Date 07122600).
78	691003	Screw (Flywheel Guard)	121	790031	Kit-Carburetor Overhaul (Walbro)			----- Note -----
78A	690364	Screw (Flywheel Guard)(Electric Start)	121A	698787	Kit-Carburetor Overhaul (Nikki)			792022 Tube-Fuel Transfer (Nikki)
								(Used After Code Date 07122500).

★ Included in Engine Gasket Set-Ref. No. 358.

● Included in Carburetor Overhaul Kit-Ref. No. 121 or 121A.

◆ Included in Carburetor Gasket Set-Ref. No. 977 or 977A.

△ Included in Valve Gasket Set-Ref. No. 1095.

Illustrations cover a range of engines. Parts shown without corresponding text may not be used on your specific engine.

21A900

REF. NO.	PART NO.	DESCRIPTION	REF. NO.	PART NO.	DESCRIPTION	REF. NO.	PART NO.	DESCRIPTION
	137♦♦281165S	Gasket-Float Bowl (Walbro)	192	691986	Adjuster-Rocker Arm	216	691840	Link-Choke
137A ♦♦698781		Gasket-Float Bowl (Nikki)	202	691841	Link-Mechanical Governor	222	694042	Bracket-Control
141	790902	Kit-Choke Shaft (Walbro)	209	792813	Spring-Governor (Brown) Used on Type No(s). 0115, 0117, 0119, 0120, 0121, 0122, 0124, 0127, 0128, 0129, 0131, 0134, 0136, 0138, 0139, 0140, 0141, 0142, 0143, 0144, 0145, 0147, 0149, 0153, 0154, 0159, 0161, 0162, 0164, 0165, 0166, 0168, 0170, 0172, 0173, 0176, 0178, 0180, 0183, 0184, 0185, 0186, 0187, 0188, 0189, 0190, 0191, 0192, 0197, 0198, 0199.	227	691374	Lever-Governor Control
141A	698778	Kit-Choke Shaft (Nikki)				232	691842	Spring-Governor Link
141B	790903	Kit-Choke Shaft (Walbro) Used on Type No(s). 0142, 0166.				238	691843	Cap-Valve
141C	793386	Kit-Choke Shaft (Manual Choke)				239	491657S	Switch-Oil Pressure Used on Type No(s). 0115, 0188.
142	♦790025	Nozzle-Carburetor (Standard)(Walbro)				240	298090S	Filter-Fuel (Red, 150 Microns) Used on Type No(s). 0129.
143	790028	Nozzle-Carburetor (High Altitude)(Walbro)						----- Note -----
146	691639	Key-Timing						394358S Filter-Fuel (White, 75 Microns) Used on Type No(s). 0101, 0104, 0105, 0113, 0117, 0119, 0120, 0123, 0124, 0125, 0127, 0128, 0131, 0134, 0136, 0138, 0146, 0152, 0155, 0156, 0158, 0167, 0168, 0169, 0171, 0172, 0176, 0180, 0183, 0184, 0186, 0192, 0198.
187	791805	Line-Fuel (Formed)(10-1/4 Inches Long)(Cut to Required Length)						
187A	791806	Line-Fuel (Formed)(21" Long)(Cut To Required Length)						
187B	791766	Line-Fuel (15" Long)(Cut To Required Length)				240A	691035	Filter-Fuel (Clear, 40 Microns) Used on Type No(s). 0115, 0121, 0122, 0133, 0137, 0139, 0140, 0141, 0142, 0143, 0144, 0145, 0147, 0149, 0150, 0151, 0153, 0154, 0157, 0159, 0161, 0162, 0164, 0165, 0166, 0170, 0173, 0178, 0179, 0185, 0187, 0188, 0189, 0190, 0191, 0195, 0197, 0199.
187C	791745	Line-Fuel (23 Inches Long)(Cut To Required Length)						
188	691693	Screw (Control Bracket)				261	697176	Screw (Control Slide) Used on Type No(s). 0139, 0140, 0142, 0166.

★ Included in Engine Gasket Set-Ref. No. 358.

● Included in Carburetor Overhaul Kit-Ref. No. 121 or 121A.

♦ Included in Carburetor Gasket Set-Ref. No. 977 or 977A.

△ Included in Valve Gasket Set-Ref. No. 1095.

Illustrations cover a range of engines. Parts shown without corresponding text may not be used on your specific engine.

21A900

REF. NO.	PART NO.	DESCRIPTION	REF. NO.	PART NO.	DESCRIPTION	REF. NO.	PART NO.	DESCRIPTION
265	691024	Clamp-Casing	311	497608	Brush Set	387A	808656	Pump-Fuel
267	794904	Screw (Casing Clamp)	333	795315	Armature-Magneto	404	691691	Washer (Governor Crank)
268	691025	Casing-Control Wire (Cut To Required Length)	334	691061	Screw (Magneto Armature)	415	690283	Plug (Sump)
269	691026	Wire-Control (Cut To Required Length)	337	491055S	Plug-Spark ----- Note ----- 691043 Plug-Spark Used on Type No(s). 0104, 0105, 0113, 0121, 0122, 0131, 0146, 0147, 0149, 0150, 0151, 0152, 0155, 0156, 0157, 0158, 0167, 0169, 0171, 0172, 0173, 0178, 0179, 0183, 0186.	415	794129	Plug (Cover/Retainer) (Used After Code Date 07040800).
270	691027	Nut (Control Wire Casing)	356	697397	Wire-Stop	431	697122	Elbow-Intake
271	691028	Lever-Control	356A	398808	Wire-Stop	445	698413	Filter-Air Cleaner Cartridge (Non Washable)
276	◆692255	Washer-Sealing	356B	697089	Wire-Stop	455	695113	Cup-Flywheel Used on Type No(s). 0101, 0105, 0115, 0117, 0119, 0123, 0124, 0125, 0127, 0128, 0134, 0136, 0138, 0139, 0141, 0142, 0144, 0145, 0147, 0149, 0150, 0151, 0153, 0157, 0159, 0161, 0162, 0166, 0168, 0170, 0171, 0176, 0179, 0184, 0185, 0187, 0188, 0190, 0191.
300	697048	Muffler Used on Type No(s). 0117, 0119, 0120, 0129, 0134, 0139, 0140, 0141, 0143, 0144, 0145, 0146, 0147, 0149, 0150, 0151, 0153, 0154, 0159, 0161, 0162, 0166, 0168, 0172, 0176, 0178, 0180, 0184, 0185, 0186, 0187, 0188, 0190, 0191, 0192, 0195, 0198, 0199.	356C	399222	Wire-Stop	456	695128	Plate-Pawl Friction
300A	697349	Muffler Used on Type No(s). 0115, 0133, 0136, 0137, 0138, 0142, 0143, 0157, 0164, 0165, 0170, 0171, 0179.	357	691483	Key-Drive Pulley Used on Type No(s). 0156, 0171.	459	281505S	Pawl-Ratchet
300B	498984S	Muffler Used on Type No(s). 0121, 0122, 0173.	358	697151	Gasket Set-Engine	474A	696578	Alternator (DC Only) Used on Type No(s). 0140, 0143, 0145, 0162, 0164.
304	698473	Housing-Blower (Black) ----- Note ----- 699085 Housing- Blower (Red)	363	19203	Puller-Flywheel	474B	696459	Alternator (Dual Circuit) Used on Type No(s). 0101, 0104, 0105, 0119, 0120, 0121, 0122, 0123, 0124, 0125, 0128, 0131, 0147, 0150, 0152, 0153, 0155, 0158, 0159, 0169, 0172, 0173, 0178, 0183, 0185, 0186, 0187, 0191.
305	697102	Screw (Blower Housing)	373	691612	Nut (Ground Terminal)			
305A	697103	Screw (Blower Housing)	383	89838S	Wrench-Spark Plug			
306	697359	Shield-Cylinder	385	694476	Screw (Fuel Pump)			
307	691003	Screw (Cylinder Shield)	385A	690297	Screw (Fuel Pump)			
309	693551	Motor-Starter	387	697090	Pump-Fuel (Includes Mounting Bracket) Used on Type No(s). 0115, 0121, 0122, 0133, 0137, 0139, 0140, 0141, 0142, 0143, 0144, 0145, 0147, 0149, 0150, 0151, 0153, 0154, 0157, 0159, 0161, 0162, 0164, 0165, 0166, 0170, 0172, 0173, 0178, 0179, 0185, 0186, 0187, 0188, 0189, 0190, 0191, 0195, 0197, 0199.			
310	690323	Screw (Starter Motor)						

★ Included in Engine Gasket Set-Ref. No. 358.

● Included in Carburetor Overhaul Kit-Ref. No. 121 or 121A.

◆ Included in Carburetor Gasket Set-Ref. No. 977 or 977A.

▲ Included in Valve Gasket Set-Ref. No. 1095.

Illustrations cover a range of engines. Parts shown without corresponding text may not be used on your specific engine.

21A900

REF. NO.	PART NO.	DESCRIPTION	REF. NO.	PART NO.	DESCRIPTION	REF. NO.	PART NO.	DESCRIPTION
474C	696457	Alternator (5 To 9 Amp Regulated) Used on Type No(s). 0113, 0129, 0133, 0137, 0146, 0154, 0156, 0157, 0167, 0176, 0179, 0180, 0190, 0192, 0198, 0199.	523	699908	Dipstick	584	794682	Cover-Breather Passage (Used After Code Date 07071800). (Use With Liquid Sealant Reference 850) ----- Note ----- 697112 Cover- Breather Passage (Used Before Code Date 07071900).
474D	696458	Alternator (10 To 16 Amp Regulated) Used on Type No(s). 0115, 0165, 0189, 0197.	524	*691032	Seal-Dipstick Tube	597	691696	Screw (Pawl Friction Plate)
501A	691188	Regulator (5 To 9 Amp Regulated) Used on Type No(s). 0113, 0129, 0133, 0137, 0146, 0154, 0156, 0157, 0167, 0179, 0180, 0192, 0195, 0198, 0199.	525	697184	Tube-Dipstick ----- Note ----- 697085 Tube-Dipstick Used on Type No(s). 0115, 0121, 0122, 0133, 0137, 0139, 0140, 0141, 0142, 0143, 0144, 0145, 0147, 0149, 0150, 0151, 0153, 0154, 0157, 0159, 0161, 0162, 0164, 0165, 0166, 0170, 0173, 0178, 0179, 0185, 0187, 0188, 0189, 0191, 0197, 0199.	601A	791850	Clamp-Hose
501B	698315	Regulator (5 To 9 Amp Regulated) Used on Type No(s). 0176.	526A	697088	Screw (Regulator)(5 To 9 Amp Regulated)	601A	691038	Clamp-Hose
501C	790292	Regulator (Dual Circuit) Used on Type No(s). 0147, 0150.	526B	697348	Screw	608	695058	Starter-Rewind
501D	691185	Regulator (10 To 16 Amp Regulated) Used on Type No(s). 0115, 0165, 0189, 0197.	527	792167	Clamp-Tube	613	691416	Screw (Muffler)
505	691251	Nut (Governor Control Lever)	544	692034	Armature-Starter	613A	691678	Screw (Muffler)
507	691972	Insulator	552	697144	Bushing-Governor Crank	613B	690297	Screw (Muffler)
510	693699	Drive-Starter	559	697561	Screw (Remote Choke Stop) Used on Type No(s). 0142, 0166, 0170, 0185.	614	691620	Pin-Cotter
513	692024	Clutch-Drive	559A	693675	Screw (Remote Choke Stop) Used on Type No(s). 0170, 0185.	616	692012	Crank-Governor
520	691084	Terminal-Ground	562	691119	Bolt (Governor Control Lever)	617	*692138	Seal-O Ring (Intake Manifold)
521	690581	Shield-Cable Used on Type No(s). 0121, 0122, 0123, 0124, 0125, 0127, 0128, 0172, 0173, 0178, 0186.	578	692306	Wire Assembly	621	692310	Switch-Stop Used on Type No(s). 0101, 0105, 0119, 0120, 0134, 0138, 0139, 0140, 0141, 0142, 0144, 0145, 0147, 0149, 0150, 0151, 0154, 0156, 0157, 0159, 0161, 0166, 0168, 0176, 0179, 0180, 0184, 0192, 0195, 0198, 0199.
			579	691029	Nut (Starter Cable)	633	690597	Seal-Choke/Throttle Shaft Used on Type No(s). 0142, 0166.
						634	690802	Spring/Seal Assembly (Walbro)
						634A	698779	Spring/Seal Assembly (Nikki)
						635	691909	Boot-Spark Plug
						643	697155	Retainer-Air Filter
						654	690958	Nut (Carburetor)

★ Included in Engine Gasket Set-Ref. No. 358.

● Included in Carburetor Overhaul Kit-Ref. No. 121 or 121A.

◆ Included in Carburetor Gasket Set-Ref. No. 977 or 977A.

△ Included in Valve Gasket Set-Ref. No. 1095.

Illustrations cover a range of engines. Parts shown without corresponding text may not be used on your specific engine.

21A900

REF. NO.	PART NO.	DESCRIPTION	REF. NO.	PART NO.	DESCRIPTION	REF. NO.	PART NO.	DESCRIPTION
676	393761	Deflector-Muffler (Side Out) Used on Type No(s). 0101, 0105, 0115, 0117, 0119, 0120, 0121, 0122, 0134, 0136, 0137, 0138, 0139, 0140, 0141, 0142, 0144, 0145, 0147, 0149, 0150, 0151, 0153, 0154, 0157, 0159, 0161, 0162, 0166, 0168, 0172, 0173, 0176, 0179, 0180, 0184, 0185, 0186, 0187, 0188, 0191, 0192, 0195, 0198, 0199.	757	697607	Link-Counterweight	851	692424	Terminal-Spark Plug
			758	697391	Counterweight	864	697346	Adapter-Muffler
			759	697392	Pin-Counterweight	868	★△690968	Seal-Valve
			783	693713	Gear-Pinion	877	393456	Wire/Connector-Alternator (Dual Circuit)
			789	698329	Harness-Wiring	877A	393814	Wire/Connector-Alternator (DC Only)
			789A	790544	Harness-Wiring	877B	393537	Wire/Connector-Alternator (5 To 9 Amp Regulated)
			797	693167	Nut (Brush Retainer)	877C	399916	Wire/Connector-Alternator (10 To 16 Amp Regulated)
			801	691283	Cap-Drive	878	398661	Harness-Alternator
			802	691286	Cap-End	883	★692236	Gasket-Exhaust
			803		Housing-Starter (Not Serviced Separately, Order Starter Motor 693551)	884	691956	Clamp-Muffler Used on Type No(s). 0121, 0122, 0173.
			823	698941	Screw (Muffler Adapter)	914	691108	Screw (Rocker Cover)
			830	691095	Stud-Rocker Arm	918	791851	Hose-Vacuum (Molded)
676A	396903	Deflector-Muffler (Side Out) Used on Type No(s). 0178.	832	790293	Guard-Muffler Used on Type No(s). 0147, 0149, 0150, 0151, 0184.	920	691656	Solenoid-Starter Used on Type No(s). 0147, 0150, 0172, 0186.
			836	690367	Screw-Muffler Guard	943	★690589	Seal-O Ring (Oil Pump Cover)
677	690661	Screw (Muffler Deflector)	842	★691031	Seal-O Ring (Dipstick Tube)	950	691657	Screw-Float Bowl (Bottom Of Bowl)
687	697175	Slide-Control Used on Type No(s). 0139, 0140, 0142, 0166.	843	697158	Sleeve-Lever Used on Type No(s). 0139, 0140, 0142, 0166.	957	792647	Cap-Fuel Tank (Plastic)
688	690395	Cap-Friction Used on Type No(s). 0139, 0140, 0142, 0166.	847	790442	Dipstick/Tube Assembly ----- Note ----- 790443 Dipstick/Tube Assembly Used on Type No(s). 0115, 0121, 0122, 0133, 0137, 0139, 0140, 0141, 0142, 0143, 0144, 0145, 0147, 0149, 0150, 0151, 0153, 0154, 0157, 0159, 0161, 0162, 0164, 0165, 0166, 0170, 0173, 0178, 0179, 0185, 0187, 0188, 0189, 0191, 0197, 0199.	958	698183	Valve-Fuel Shut Off (Plastic) Used on Type No(s). 0141, 0144, 0146, 0154, 0156, 0157, 0159, 0161, 0167, 0171, 0172, 0179, 0185, 0186, 0190, 0191.
689	691855	Spring-Friction				965	499613	Cover-Oil Pump
689A	690529	Spring-Friction Used on Type No(s). 0139, 0140, 0142, 0166.	850	100100	Sealant-Liquid (Rocker Cover Gasket and Breather Gasket) (Used After Code Date 07071800).	967	697292	Filter-Pre Cleaner
691	★692407	Seal-Governor Shaft						
692	691301	Spring-Detent						
697	690372	Screw (Drive Cap)						
705	790561	Nut (Fuel Tank)						
718	690959	Pin-Locating						
729	691335	Clip-Wire (Wire Retainer)						
729A	691224	Clip-Wire (Starter Motor)						
729B	694123	Clip-Wire						
741	697128	Gear-Timing						
750	790832	Screw (Oil Pump Cover)						

★ Included in Engine Gasket Set-Ref. No. 358.

● Included in Carburetor Overhaul Kit-Ref. No. 121 or 121A.

◆ Included in Carburetor Gasket Set-Ref. No. 977 or 977A.

△ Included in Valve Gasket Set-Ref. No. 1095.

Illustrations cover a range of engines. Parts shown without corresponding text may not be used on your specific engine.

21A900

REF. NO.	PART NO.	DESCRIPTION	REF. NO.	PART NO.	DESCRIPTION	REF. NO.	PART NO.	DESCRIPTION
968	697420	Cover–Air Cleaner (Black) ----- Note ----- 697422 Cover–Air Cleaner (Red)	1027	492932S	Filter–Oil	1070	690372	Screw (Flywheel Fan) (Used Before Code Date 07040900).
972	792168	Tank–Fuel (Plastic)	1029	691751	Arm–Rocker	1070A	690363	Screw (Flywheel Fan) (Used After Code Date 07040800).
975	495933	Bowl–Float (Walbro)	1034	690822	Guide–Push Rod Label–Emissions (Available From A Briggs & Stratton Authorized Dealer)	1090	691293	Retainer–Brush
975A	698783	Bowl–Float (Nikki)	1036			1091	691333	Cap–Limiter
977	690192	Gasket Set–Carburetor	1040	698368	Plate–Trim Used on Type No(s). 0104, 0113, 0121, 0122, 0133, 0137, 0140, 0143, 0152, 0155, 0158, 0164, 0167, 0169, 0172, 0173, 0178, 0186.	1095	691581	Gasket Set–Valve
977A	790032	Gasket Set–Carburetor (Nikki)	1040A	697381	Plate–Trim Used on Type No(s). 0101, 0105, 0119, 0120, 0129, 0131, 0154, 0156, 0165, 0180, 0183, 0189, 0189, 0192, 0195, 0197, 0198, 0199.	1119	691183	Screw (Alternator)
987	●691326	Seal–Throttle Shaft				1127	695407	Screw (Float Bowl)
987A	●698777	Seal–Throttle Shaft (Nikki)				1136	690278	Screw (Control Bracket)(High Speed Control) Used on Type No(s). 0139, 0140, 0142, 0166.
1005	794439	Fan–Flywheel (Used After Code Date 07040800).	1044	698139	Screw (Flywheel)	1146	793380	Screw (Choke Shaft)(Manual Choke)
1005A	794440	Fan–Flywheel (Used Before Code Date 07040900).	1051	691265	Ring–Retaining	1263	697124	Reed–Breather
1017	690770	Screen–Oil Pump	1054	280275	Tie–Cable	1264	697104	Screw (Breather Reed)
1022*Δ272475S		Gasket–Rocker Cover (Used Before Code Date 07091000). (After Date Code Use liquid Sealant Reference 850)	1058	276344	Manual–Operator’s ----- Note ----- MS3787 Manual– Operator’s Used on Type No(s). 0101, 0134, 0164, 0165, 0170, 0189, 0197. MS3788 Manual– Operator’s Used on Type No(s). 0105, 0191.	1266	★●691917	Seal–O Ring (Intake Elbow)
1023	794659	Cover–Rocker				1266A	★●697123	Seal–O Ring (Intake Elbow)
1024	499054	Pump–Oil (Used Before Code Date 07051700).	1059	698516	Kit–Screw/Washer	1267	697419	Latch–Blower Housing (Black) ----- Note ----- 697424 Latch–Blower Housing (Red)
1024A	794644	Pump–Oil (Used After Code Date 07051600).				1270	697156	Plug–AVS Counterweight
1026	697395	Rod–Push (Exhaust) ----- Note ----- 697394 Rod–Push (Intake)				1319	794467	Label–Warning
						1397	791219	Washer (Blower Housing)

★ Included in Engine Gasket Set–Ref. No. 358.

● Included in Carburetor Overhaul Kit–Ref. No. 121 or 121A.

◆ Included in Carburetor Gasket Set–Ref. No. 977 or 977A.

Δ Included in Valve Gasket Set–Ref. No. 1095.

Illustrations cover a range of engines. Parts shown without corresponding text may not be used on your specific engine.