

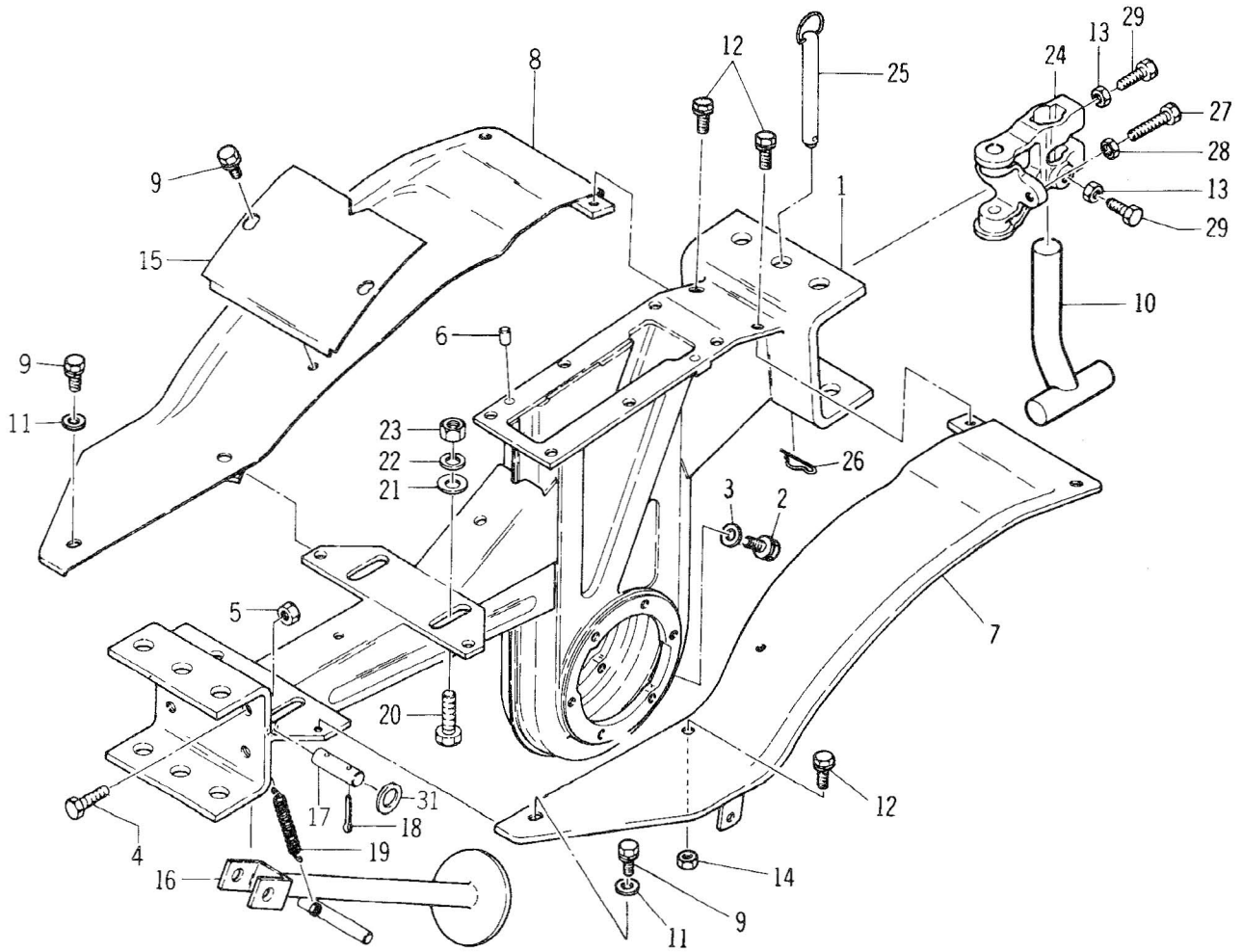
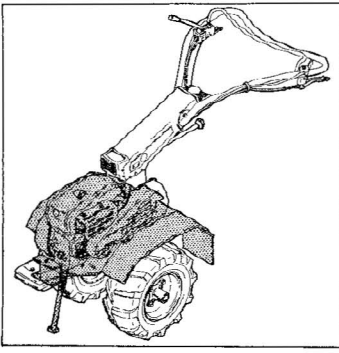
MITSUBISHI
CT 335

ENGINE

G 500 B

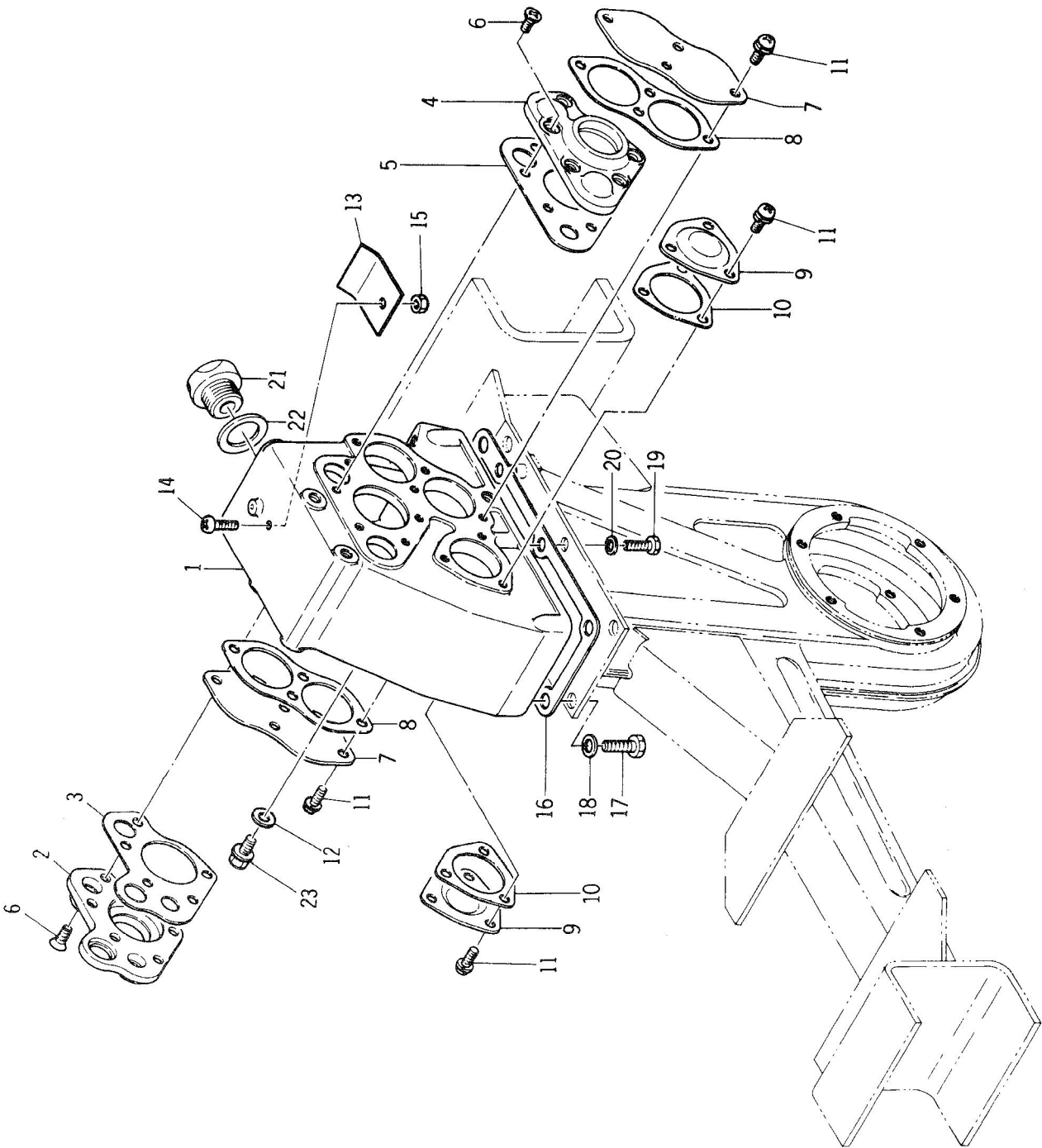
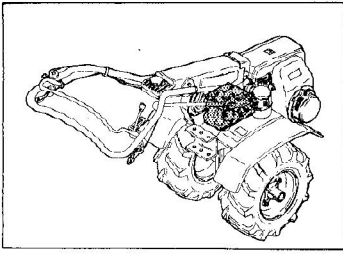
i DEM CT 202

Fig. 11 LOWER CASE AND FENDER



Ref No.	Part No.	R/P	Part Name	Q'ty	Description	Remarks
11 - 1	1438 - 1020 - 000		CASE, lower	1		
11 - 2	2740 - 3214 - 200		PLUG	1	M8X12	
11 - 3	3610 - 1059 - 000		PACKING	1		
11 - 4	A100 - 0110 - 030		BOLT	2	M10X30	
11 - 5	A300 - 0110 - 003		NUT	2	M10	
11 - 6	0540 - 1008 - 014		PIN	2	D8X14	
11 - 7	1438 - 2550 - 000		FENDER (L. H)	1		
11 - 8	1438 - 2551 - 000		FENDER (R. H)	1		
11 - 9	F104 - 0106 - 012		BOLT	4	M6X12	
11 - 10	1430 - 1850 - 000		ROD, resistance (L - type)	1	M6	
11 - 11	0350 - 0140 - 618		WASHER	4	M6	
11 - 12	F114 - 0108 - 020		BOLT	4	M8X20	
11 - 13	A300 - 0112 - 003		NUT	3	M12	
11 - 14	A301 - 0108 - 001		NUT	2	M8	
11 - 15	1438 - 2556 - 000		PLATE, fender joint	1		
11 - 16	1438 - 2500 - 000		STAND	1		
11 - 17	1438 - 2511 - 000		SHAFT, stand setting	1		
11 - 18	0520 - 0125 - 020		PIN, cotter	2	D2.5X20	
11 - 19	1430 - 1415 - 000		SPRING	1		
11 - 20	A100 - 0110 - 035		BOLT	4	M10X35	
11 - 21	0350 - 0151 - 026		WASHER	4	M10	
11 - 22	A360 - 0101 - 002		WASHER, spring	4	M10	
11 - 23	A300 - 0110 - 001		NUT	4	M10	
11 - 24	1458 - 3101 - 000		HITCH, universal	1		
11 - 25	0565 - 0016 - 140		PIN	1	D16X140	
11 - 26	0521 - 0116 - 000		PIN, snap	1		
11 - 27	A104 - 0112 - 065		BOLT	2	M12X65	
11 - 28	A300 - 0112 - 003		NUT	2	M12	
11 - 29	1458 - 3102 - 000		BOLT	3	M12X40	
11 - 30	A300 - 0112 - 003		NUT	3	M12	
11 - 31	0350 - 0101 - 225		WASHER	AR	M12	

Fig. 12 TRANSMISSION CASE



Ref No.	Part No.	R/P	Part Name	Q'ty	Description	Remarks
12 - 1	1438 - 1011 - 001		CASE, transmission	1		
12 - 2	1438 - 1012 - 010		METAL (A)	1		
12 - 3	1438 - 1013 - 000		PACKING, metal (A)	1		
12 - 4	1438 - 1014 - 000		METAL (B)	1		
12 - 5	1438 - 1015 - 000		PACKING, metal (B)	1		
12 - 6	A232 - 0006 - 012		SCREW	10	M6X12	
12 - 7	1438 - 1016 - 000		METAL (C)	2		
12 - 8	1438 - 1017 - 000		PACKING, metal (C)	2		
12 - 9	3120 - 1059 - 000		CAP, metal	2		
12 - 10	3120 - 1061 - 000		PACKING, metal cap	2		
12 - 11	F242 - 0106 - 016		SCREW	14	M6X16	
12 - 12	2740 - 3926 - 000		PACKING	1		C/#17791 ~
12 - 13	1438 - 1018 - 000		PLATE, breather sub	1		
12 - 14	A242 - 0006 - 016		SCREW	1	M6X16	
12 - 15	A300 - 0006 - 001		NUT	1	M6	
12 - 16	1438 - 1019 - 000		PACKING, mission case	1		
12 - 17	A100 - 0010 - 020		BOLT	4	M10X20	
12 - 18	A360 - 0001 - 002		WASHER, spring	4	M10	
12 - 19	A100 - 0008 - 020		BOLT	2	M8X20	
12 - 20	A360 - 0000 - 802		WASHER, spring	2	M8	
12 - 21	3650 - 1075 - 000		PLUG, oiling	1		C/#17791 ~
12 - 22	1231 - 1003 - 010		PACKING, rubber	1		
12 - 23	2740 - 3979 - 000		PLUG	1	M8X12	C/#17791 ~

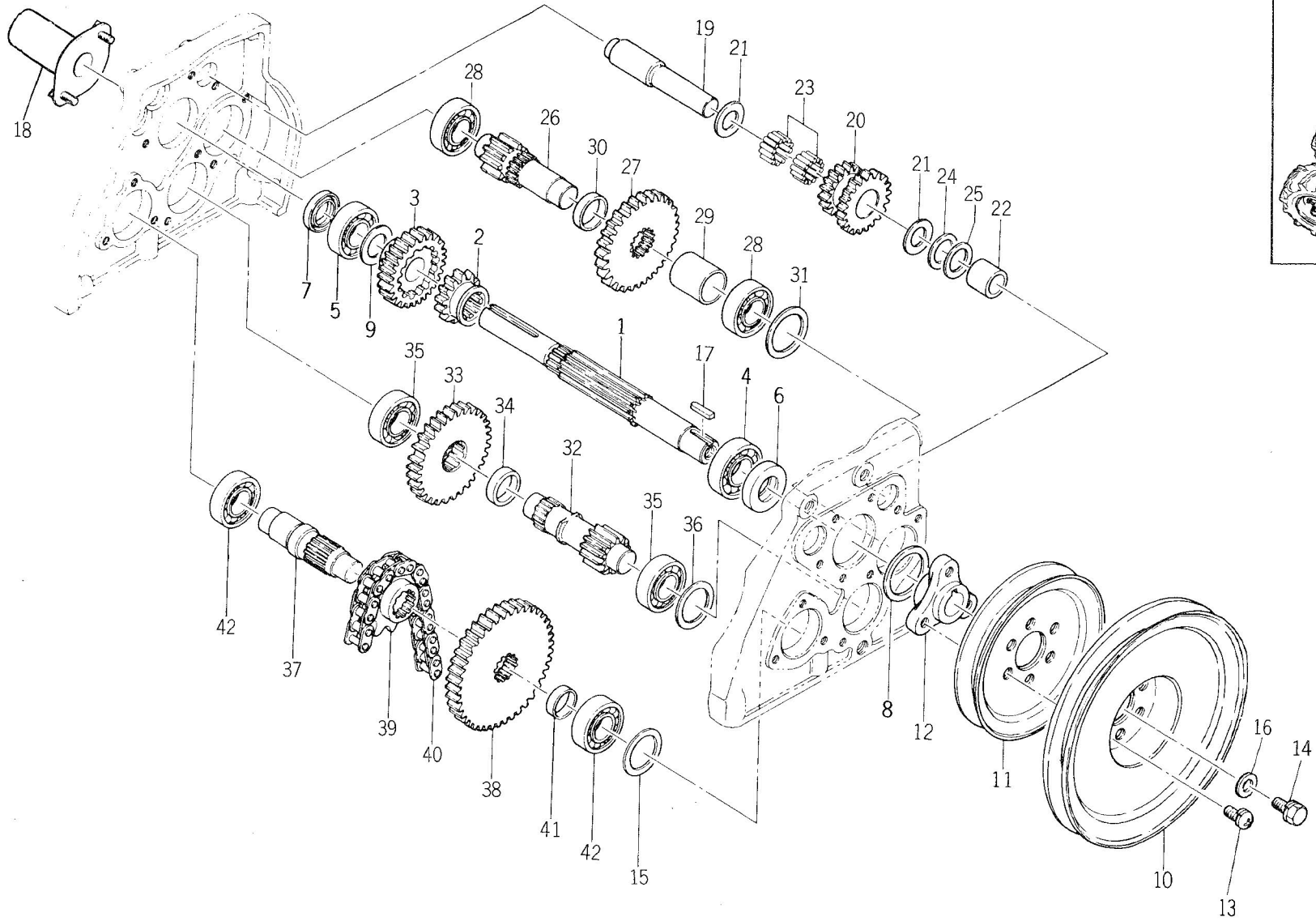


Fig. 13 TRANSMISSION GEAR

Ref No.	Part No.	R/P	Part Name	Q'ty	Description	Remarks
13 - 1	1438 - 1051 - 000		SHAFT, main	1		
13 - 2	1438 - 1052 - 000		GEAR (A), main shaft	1	17T	
13 - 3	1438 - 1053 - 000		GEAR (B), main shaft	1	27T	
13 - 4	0750 - 0060 - 040		BEARING, ball	1	6004	
13 - 5	0750 - 0062 - 030		BEARING, ball	1	6203	
13 - 6	0840 - 1020 - 358		SEAL, oil	1	TC20358	
13 - 7	0840 - 1017 - 306		SEAL, oil	1	TC17306	
13 - 8	0730 - 0004 - 204		LINER	AR	t=0.4	
13 - 9	3610 - 1105 - 000		LINER	1	t=1.0	
13 - 10	1438 - 1054 - 000		PULLEY, main shaft	1	D180	
13 - 11	1438 - 1057 - 000		PULLEY, main shaft	1	D125	
13 - 12	1438 - 1059 - 000		BOSS, main shaft pulley	1		
13 - 13	F242 - 0108 - 016		SCREW	3	M8X16	
13 - 14	F114 - 0108 - 020		BOLT	1	M8X20	
13 - 15	0730 - 0004 - 004		LINER	AR		
13 - 16	0350 - 0160 - 826		WASHER	1	M8	
13 - 17	0571 - 0005 - 020		KEY	1	5X5X20	
13 - 18	1438 - 1061 - 000		COVER	1		
13 - 19	1438 - 1101 - 000		SHAFT, 1st	1		
13 - 20	1438 - 1102 - 000		GEAR, 1st shaft	1	21TX17T	
13 - 21	1438 - 1105 - 000		WASHER, needle	2	D28Xd15.5X1t	
13 - 22	1438 - 1103 - 000		COLLAR	1	D20Xd15X18.5ℓ	
13 - 23	1438 - 1103 - 100		BEARING, needle	2		
13 - 24	0731 - 0001 - 504		LINER	AR	t=0.4	
13 - 25	1438 - 1104 - 000		LINER	AR	D22Xd16X0.25t	
13 - 26	1438 - 1151 - 000		SHAFT, 2nd	1		
13 - 27	1438 - 1152 - 000		GEAR, 2nd shaft	1	35T	
13 - 28	0750 - 0062 - 030		BEARING, ball	2	6203	
13 - 29	1438 - 1153 - 000		COLLAR (A)	1	D25.2Xd20X29ℓ	
13 - 30	1438 - 1154 - 000		COLLAR (B)	1	D27.2Xd22.6X7ℓ	
13 - 31	0730 - 0004 - 004		LINER	AR	t=0.4	
13 - 32	1438 - 1201 - 000		SHAFT, 3rd	1		
13 - 33	1438 - 1202 - 000		GEAR, 3rd shaft	1	35T	
13 - 34	1438 - 1154 - 000		COLLAR (B)	1	D27.2Xd22.6X7ℓ	
13 - 35	0750 - 0062 - 030		BEARING, ball	2	6203	
13 - 36	0730 - 0004 - 004		LINER	AR	t=0.4	
13 - 37	1438 - 1251 - 000		SHAFT, 4th	1		
13 - 38	1438 - 1252 - 000		GEAR, 4th shaft	1	46T	
13 - 39	1438 - 1253 - 000		SPROCKET, 4th shaft	1	21T	

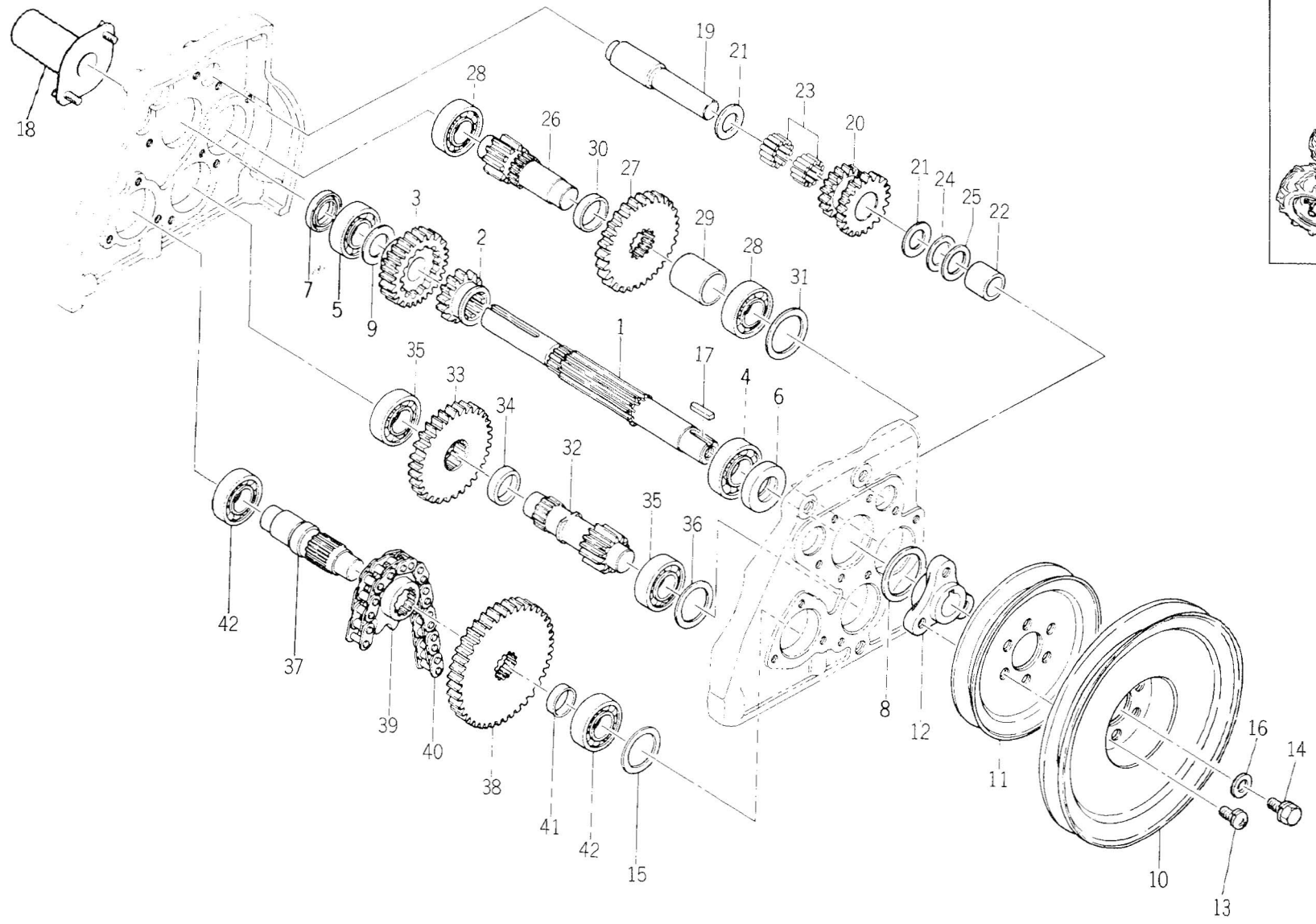
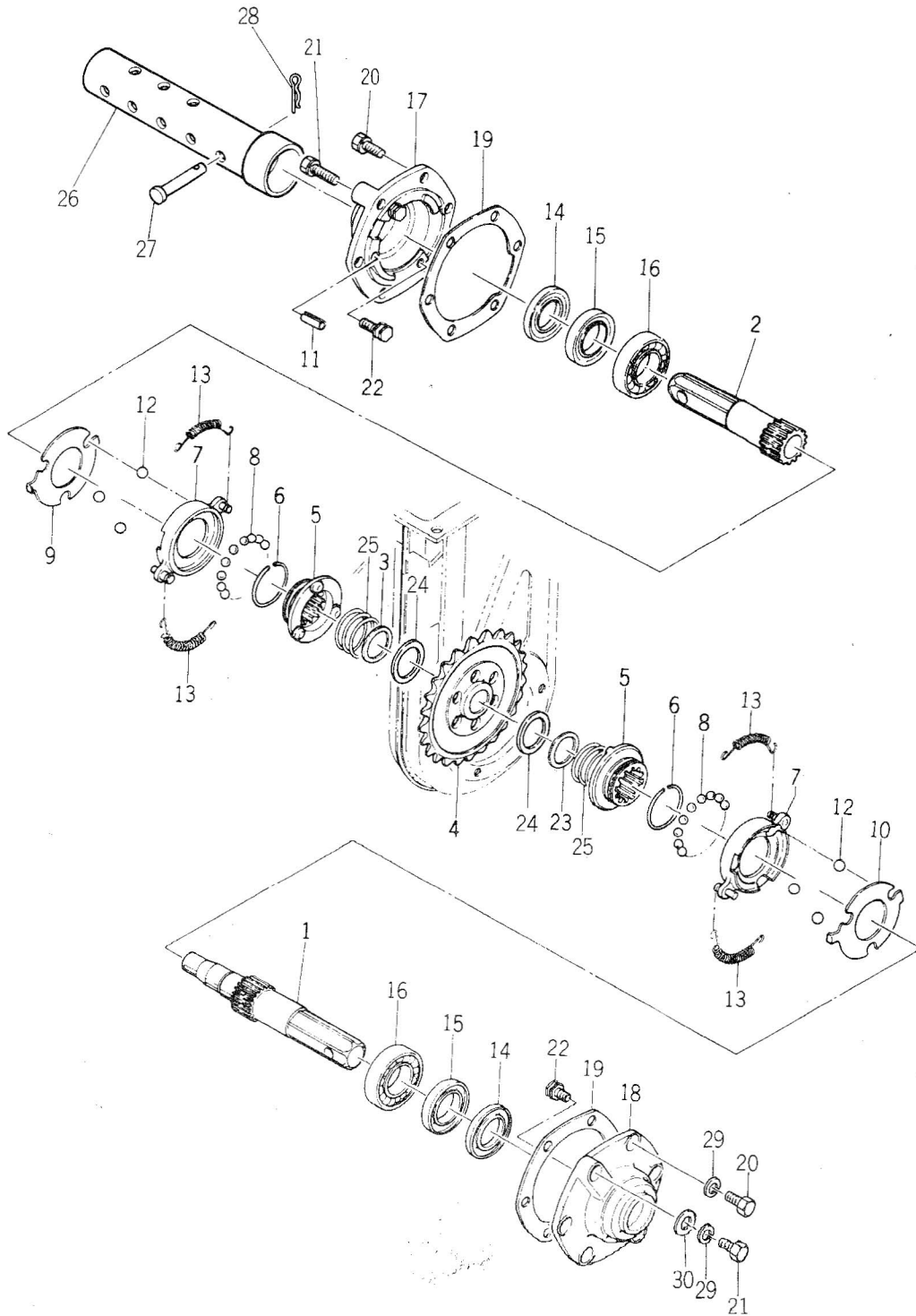
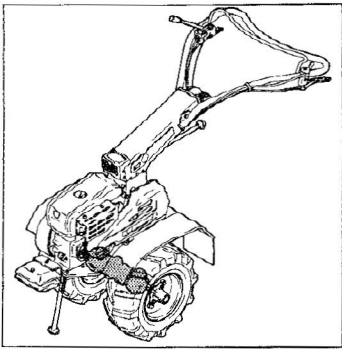


Fig. 13 TRANSMISSION GEAR

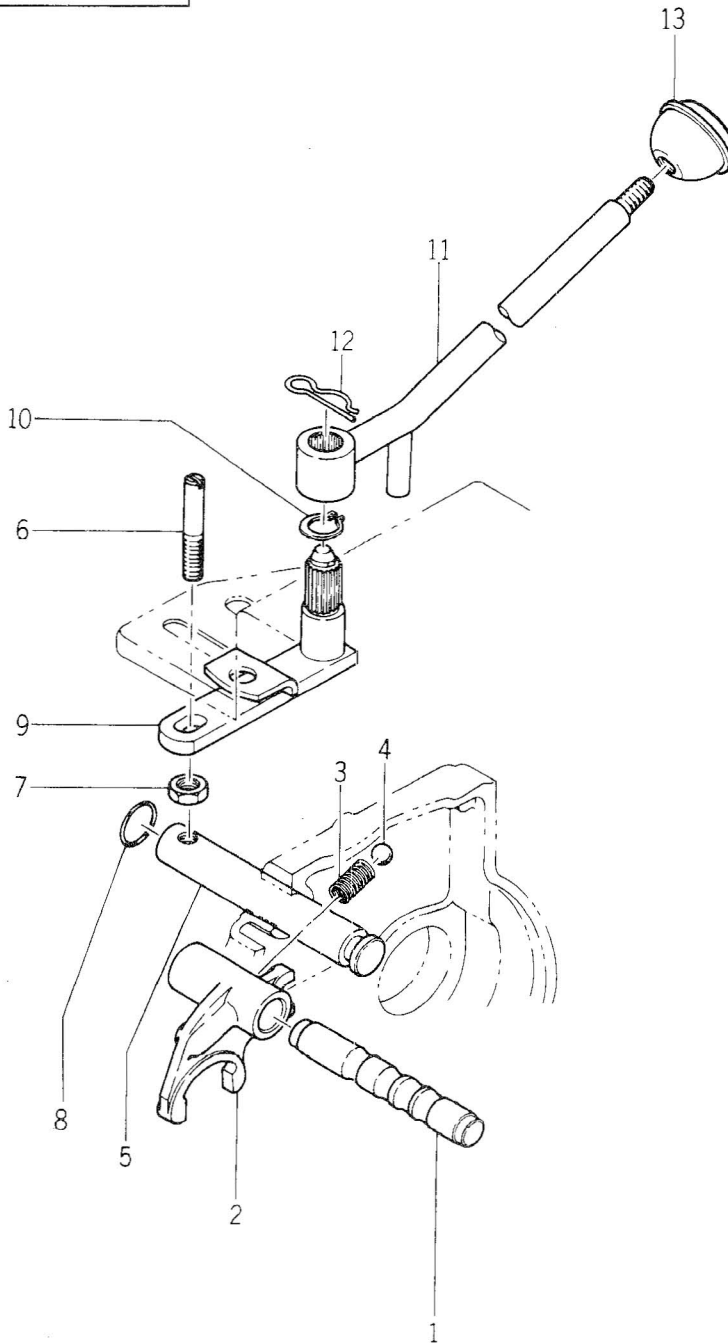
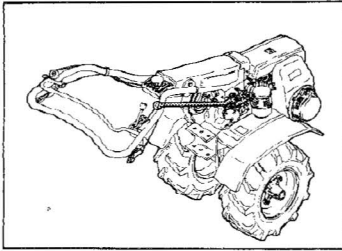
Ref No.	Part No.	R/P	Part Name	Q'ty	Description	Remarks
13 - 40	1438 - 1254 - 000		CHAIN	1	525 - SH - CP 56 LINK	
13 - 41	1438 - 1255 - 000		COLLAR	1	D22.2Xd19.8X7ℓ	
13 - 42	0750 - 0062 - 030		BEARING, ball	2	6203	

Fig. 14 AXLE SYSTEM



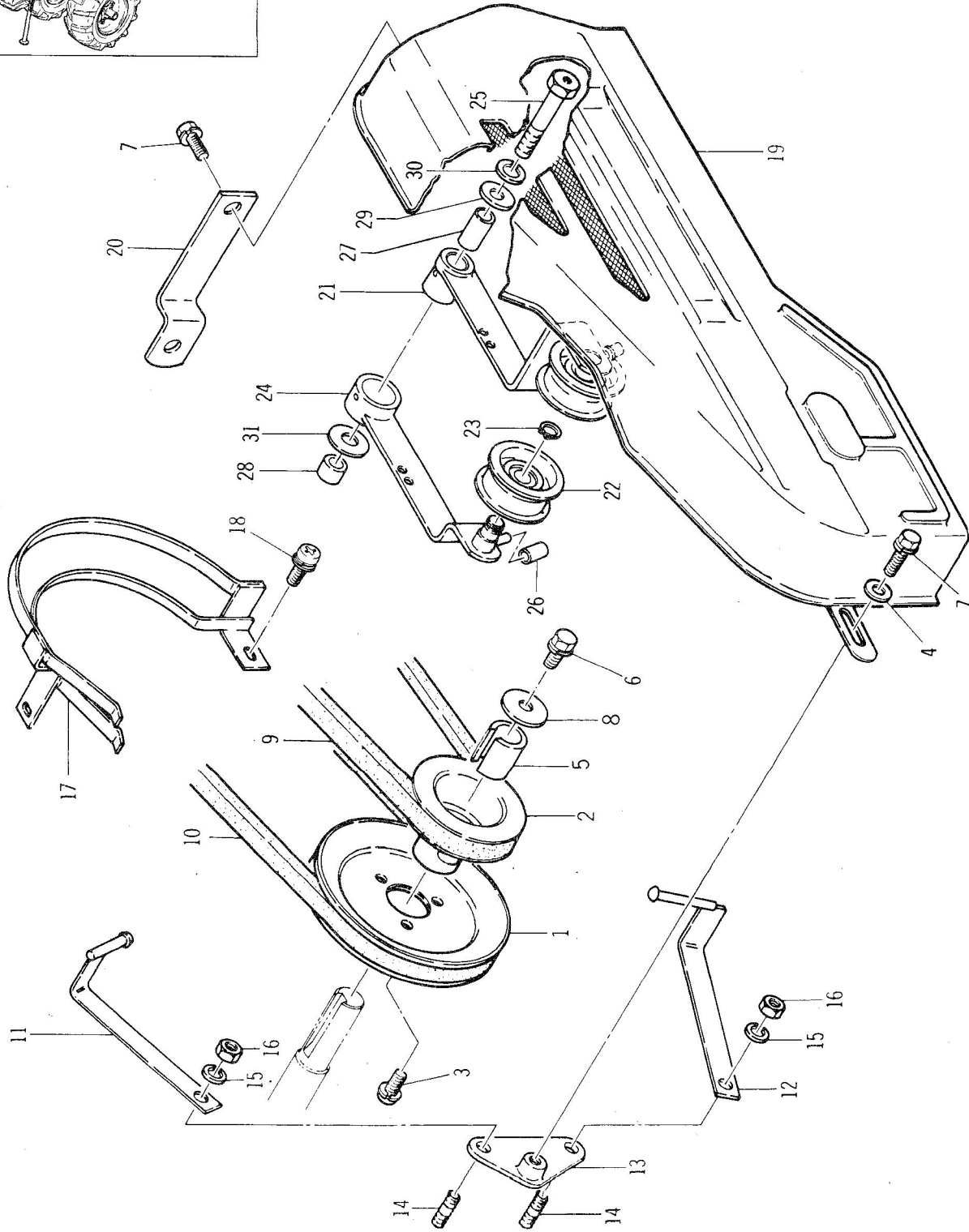
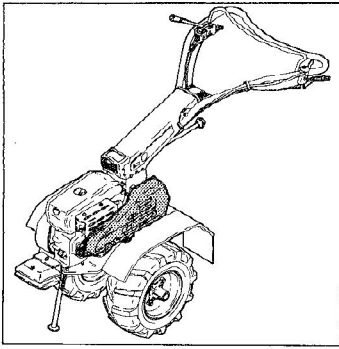
Ref No.	Part No.	R/P	Part Name	Q'ty	Description	Remarks
14 - 1	1929 - 1304 - 000		AXLE (L. H)	1		
14 - 2	1929 - 1303 - 000		AXLE (R. H)	1		
14 - 3	3111 - 1302 - 100		LINER (B), thrust	AR	t=1.0 D34Xd23.5	
14 - 3	1438 - 1304 - 000		LINER (C), thrust	AR	t=1.4 D34Xd23.5	
14 - 3	1438 - 1305 - 000		LINER (D), thrust	AR	t=1.2 D34Xd23.5	
14 - 3	1438 - 1305 - 100		LINER (E), thrust	AR	t=0.8 D34Xd23.5	
14 - 4	1438 - 1306 - 000		SPROCKET, axle	1	25T	
14 - 5	1438 - 1307 - 000		CLUTCH, dog	2		
14 - 6	1420 - 1306 - 000		RING, snap	2		
14 - 7	1438 - 1308 - 000		HOLDER, ball	2		
14 - 8	0800 - 0000 - 800		BALL	42	D8	
14 - 9	1438 - 1313 - 000		RETAINER (R. H)	1		
14 - 10	1438 - 1314 - 000		RETAINER (L. H)	1		
14 - 11	0550 - 1008 - 016		PIN, spring	2	D8X16ℓ	
14 - 12	0800 - 0001 - 100		BALL	6	D11	
14 - 13	1473 - 1338 - 000		SPRING, return	4		
14 - 14	0840 - 0030 - 505		SEAL, oil	2	VC30505	
14 - 15	0840 - 1030 - 508		SEAL, oil	2	TC30508	
14 - 16	0750 - 0062 - 060		BEARING, ball	2	6206	
14 - 17	1438 - 1315 - 010		METAL (R. H), axle	1		
14 - 18	1438 - 1316 - 010		METAL (L. H), axle	1		
14 - 19	1438 - 1318 - 000		PACKING (A)	AR	t=0.6	
14 - 19	1438 - 1319 - 000		PACKING (B)	AR	t=0.8	
14 - 19	1438 - 1319 - 100		PACKING (C)	2	t=1.0	
14 - 20	A050 - 0008 - 020		BOLT	8	M8X20	C/#20191 ~
14 - 21	A054 - 0008 - 030		BOLT	4	M8X30	C/#20191 ~
14 - 22	1438 - 1317 - 000		HOOK, spring	4		
14 - 23	1438 - 1319 - 300		LINER (F), thrust	AR	t=1.4 D34Xd26.5	
14 - 23	1438 - 1319 - 400		LINER (G), thrust	AR	t=1.2 D34Xd26.5	
14 - 23	1438 - 1319 - 500		LINER (H), thrust	AR	t=1.0 D34Xd26.5	
14 - 23	1438 - 1319 - 600		LINER (J), thrust	AR	t=0.4 D34Xd26.5	
14 - 24	1438 - 1319 - 900		LINER, thrust	2	t=1.0 D41Xd35	C/#19291 ~
14 - 25	1438 - 1319 - 700		SPRING, clutch	2		C/#19291 ~
14 - 26	1929 - 1321 - 000		TUBE, wheel	2		
14 - 27	0560 - 0110 - 050		PIN, wheel tube	2	D10X50ℓ	
14 - 28	0521 - 0110 - 000		PIN, snap	2	d10	
14 - 29	A360 - 0000 - 802		WASHER, spring	12	M8	C/#20191 ~
14 - 30	0350 - 0040 - 818		WASHER	2	M8	C/#20191 ~

Fig. 15 SHIFTER SYSTEM



Ref No.	Part No.	R/P	Part Name	Q'ty	Description	Remarks
15 - 1	1438 - 1351 - 000		SHAFT, change shifter	1		
15 - 2	1438 - 1352 - 000		FORK, change shift	1		
15 - 3	1438 - 1353 - 000		SPRING, shifter stopper	1		
15 - 4	0800 - 0000 - 800		BALL, steel	1	D8	
15 - 5	1438 - 1354 - 000		JOINT, shifter	1		
15 - 6	1438 - 1355 - 000		INDICATOR	1		
15 - 7	A301 - 0108 - 003		NUT	1	M8	
15 - 8	0830 - 0100 - 160		O - RING	1	D16	
15 - 9	1438 - 1356 - 000		ARM, shift	1		
15 - 10	0740 - 0001 - 400		RING, snap (C - type)	1	d14	
15 - 11	1438 - 1360 - 000		LEVER, change	1		
15 - 12	0521 - 0112 - 000		PIN, snap	1	d12	
15 - 13	3612 - 1409 - 010		KNOB	1		C/#17791 ~

Fig. 16 PULLEY AND COVER SYSTEM



Ref No.	Part No.	R/P	Part Name	Q'ty	Description	Remarks
16 - 1	1438 - 0201 - 000		PULLEY (L), engine	1		
16 - 2	1927 - 0201 - 000		PULLEY (S), engine	1		
16 - 3	F242 - 0106 - 012		SCREW	3	M6X12	
16 - 4	0350 - 0150 - 822		WASHER	1	M8	
16 - 5	1456 - 0202 - 000		COLLAR, engine pulley	1		
16 - 6	F114 - 0108 - 020		BOLT	1	M8X20	
16 - 7	F114 - 0108 - 016		BOLT	2	M8X16	
16 - 8	0350 - 0160 - 826		WASHER	1	M8	
16 - 9	0852 - 1300 - 039		V - BELT	1	LB39	
16 - 10	0852 - 1300 - 041		V - BELT	1	LB41	
16 - 11	1927 - 0211 - 000		GUIDE (A), belt	1		
16 - 12	1927 - 0213 - 000		GUIDE (B), belt	1		
16 - 13	1438 - 0215 - 000		BRACKET, belt guide	1		
16 - 14	A132 - 0108 - 016		BOLT	2	M8X16	
16 - 15	A360 - 0100 - 802		WASHER, spring	2	M8	
16 - 16	A301 - 0108 - 001		NUT	2	M8	
16 - 17	1438 - 1401 - 000		COVER, belt	1		
16 - 18	H242 - 0106 - 016		SCREW	2	M6X16	
16 - 19	1438 - 1501 - 010		COVER, pulley	1		C/#15491 ~
16 - 20	1438 - 1504 - 000		SEAT (B), setting	1		
16 - 21	1438 - 1451 - 000		ARM (A), tight pulley	1		
16 - 22	3115 - 1403 - 100		PULLEY, tension	2		
16 - 23	0740 - 0001 - 200		RING, snap (C - type)	2	d12	
16 - 24	1438 - 1453 - 000		ARM (B), tight pulley	1		
16 - 25	1438 - 1455 - 000		BOLT	1	M10X60	
16 - 26	1458 - 1456 - 000		SHOCKER	2		
16 - 27	1456 - 1464 - 000		COLLAR, distance	1		
16 - 28	1438 - 1456 - 000		COLLAR	1		
16 - 29	0350 - 0151 - 026		WASHER	1	M10	
16 - 30	A360 - 0101 - 002		WASHER, spring	1	M10	
16 - 31	0350 - 0101 - 030		WASHER	1	M10	

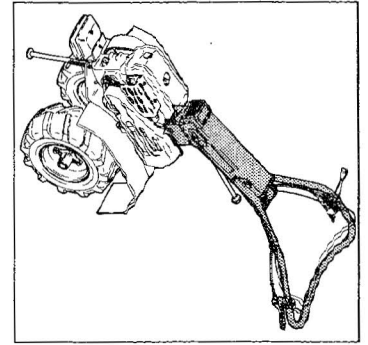
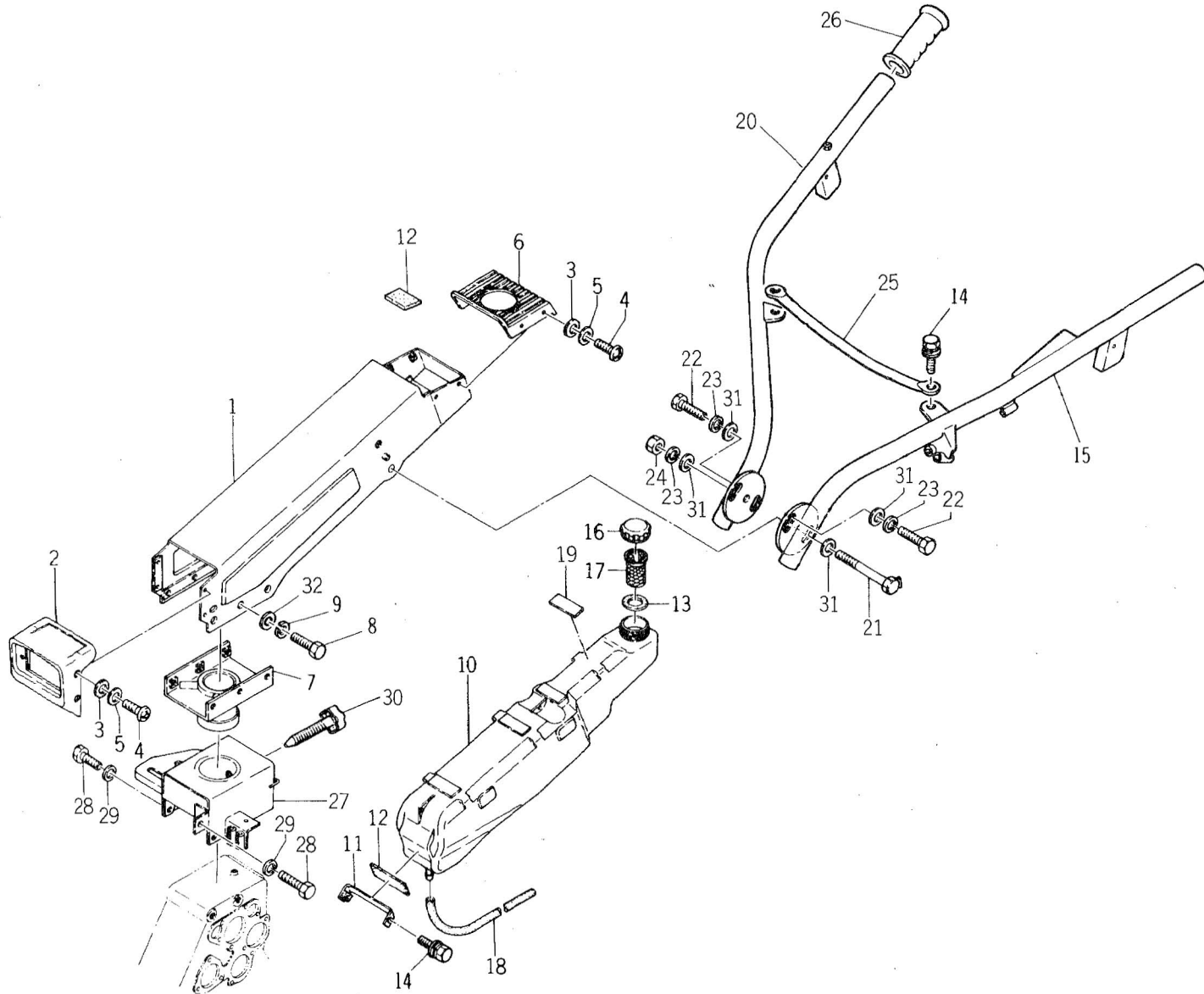


Fig. 17 HANDLE AND FUEL TANK SYSTEM

Ref No.	Part No.	R/P	Part Name	Q'ty	Description	Remarks
17 - 1	1438 - 2011 - 000		COVER, handle	1		
17 - 2	1438 - 2019 - 010		COVER, front	1		
17 - 3	1438 - 2021 - 000		WASHER	8		
17 - 4	A242 - 0105 - 012		SCREW	8	M5X12	
17 - 5	0350 - 0120 - 512		WASHER	8	M5	
17 - 6	1438 - 2022 - 000		COVER	1		
17 - 7	1438 - 2030 - 000		BOSS, turning	1		
17 - 8	A030 - 0108 - 020		BOLT, (8T)	6	M8X20	
17 - 9	A360 - 0100 - 802		WASHER, spring	6	M8	
17 - 10	1438 - 2041 - 011		TANK, fuel	1		
17 - 11	1438 - 2042 - 000		PLATE	1		
17 - 12	1438 - 2043 - 000		PLATE, rubber	6		
17 - 13	1458 - 2043 - 000		PLATE (B), rubber	1		
17 - 14	H114 - 0108 - 016		BOLT	4	M8X16	
17 - 15	1928 - 2061 - 000		HANDLE, left	1	M8	
17 - 16	1458 - 2051 - 000		CAP	1		
17 - 17	0980 - 6000 - 000		FILTER	1		
17 - 18	1438 - 2044 - 000		TUBE	1	D13Xd10X300ℓ	E type
17 - 18	335F - 2044 - 000		TUBE	1	D13Xd10X300ℓ	F type
17 - 19	1438 - 2049 - 000		PLATE, vinyl	4		
17 - 20	1928 - 2051 - 000		HANDLE, right	1		
17 - 21	1438 - 2060 - 000		BOLT, handle setting	1	M12X135	
17 - 22	A100 - 0112 - 025		BOLT	2	M12X25	
17 - 23	A360 - 0101 - 202		WASHER, spring	3	M12	
17 - 24	A300 - 0112 - 001		NUT	1	M12	
17 - 25	1420 - 2111 - 000		HANDLE, auxiliary	1		C/#20191 ~
17 - 26	1352 - 4121 - 000		GRIP, handle	2		
17 - 27	1438 - 2201 - 000		COVER, rotation	1		
17 - 28	A010 - 0108 - 025		BOLT (6T)	6	M8X25	
17 - 29	A360 - 0100 - 802		WASHER, spring	6	M8	
17 - 30	1927 - 2201 - 000		BOLT, set	1	M14X56	
17 - 31	0350 - 0151 - 226		WASHER	4	M12	
17 - 32	0350 - 0140 - 818		WASHER	6	M8	C/#20191 ~

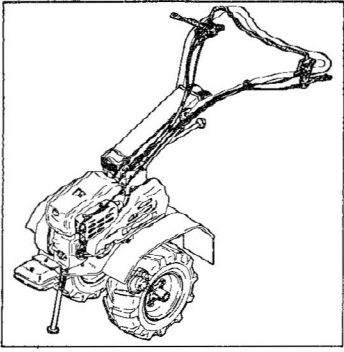
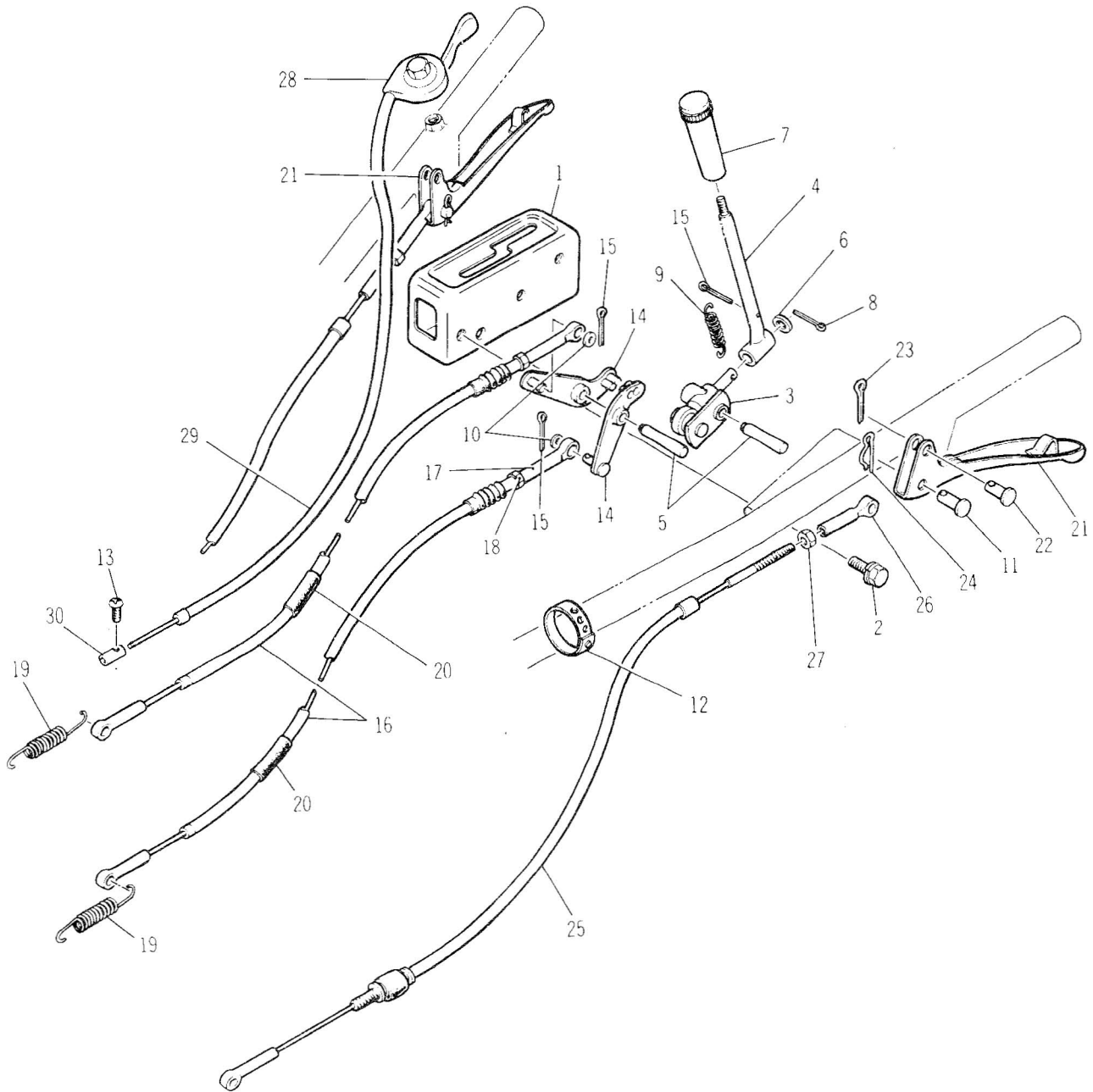
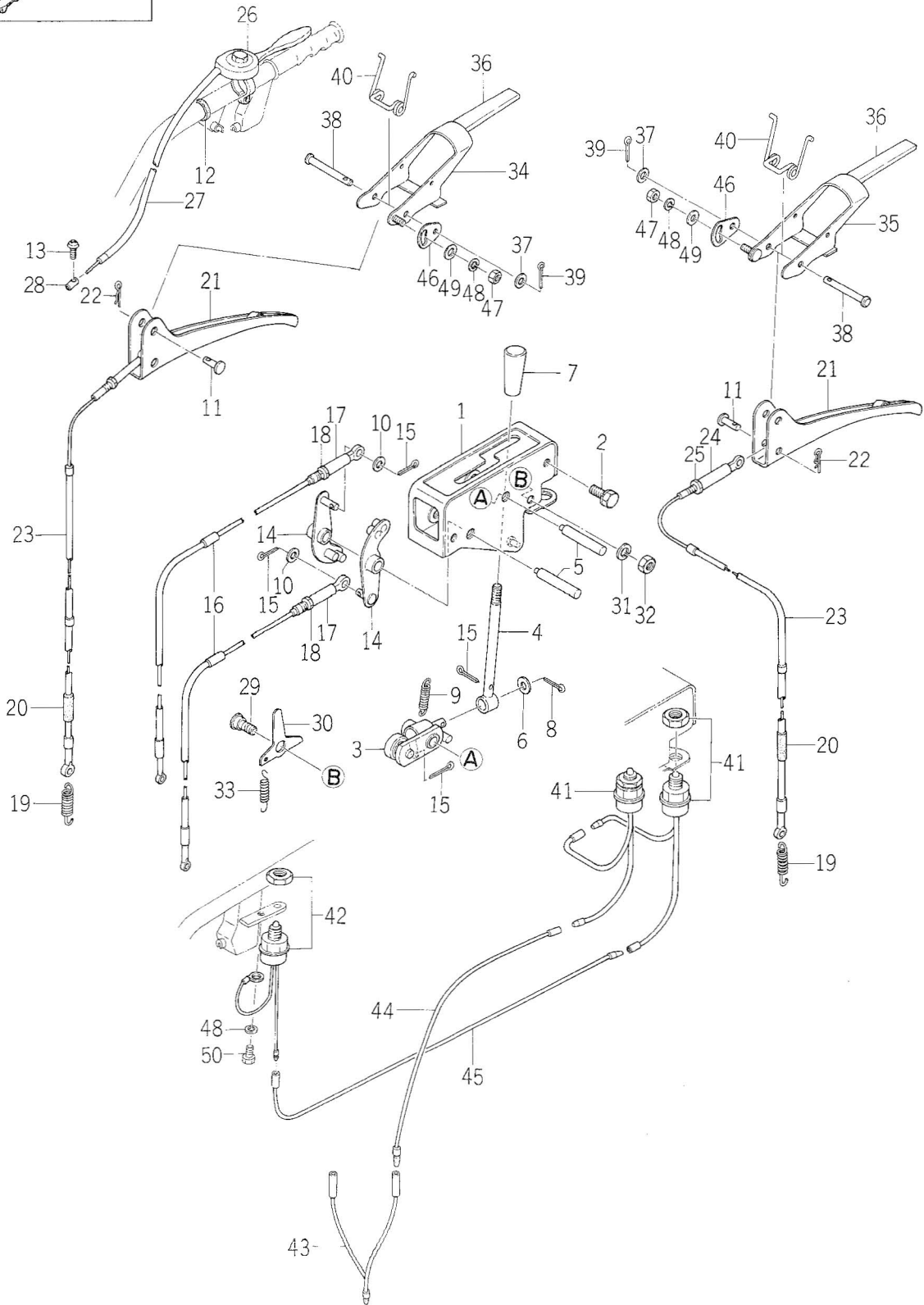
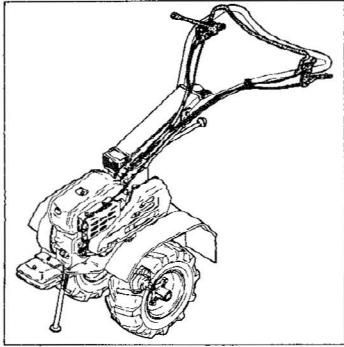


Fig. 18 CONTROL SYSTEM (E TYPE)



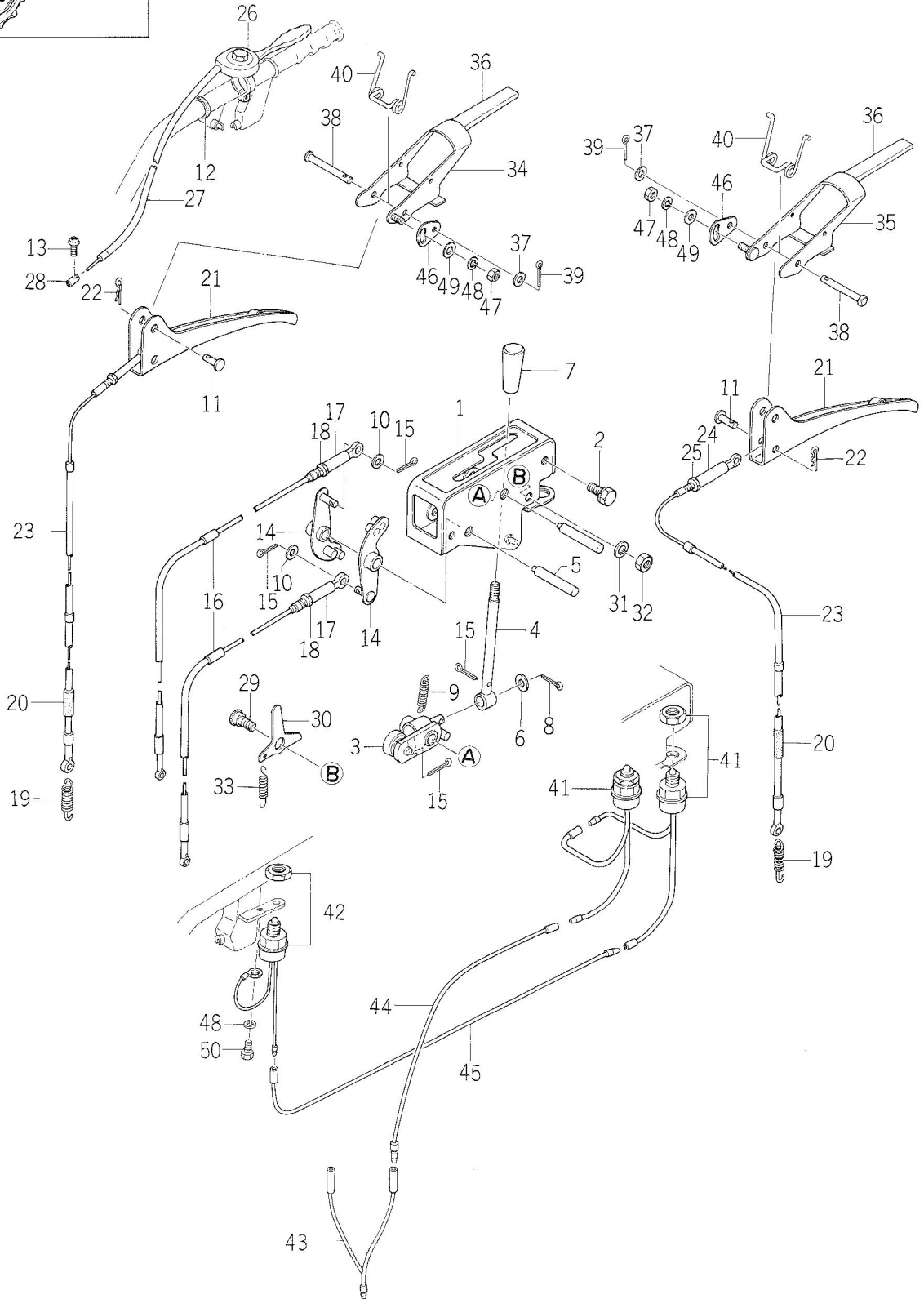
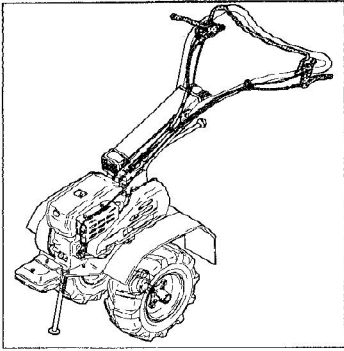
Ref No.	Part No.	R/P	Part Name	Q'ty	Description	Remarks
18 - 1	1928 - 2101 - 000		CASE, clutch	1		
18 - 2	F114 - 0108 - 016		BOLT	2	M8X16	
18 - 3	1928 - 2105 - 000		ARM	1		
18 - 4	1929 - 2208 - 000		LEVER, change	1		
18 - 5	1456 - 2112 - 000		SHAFT, change lever	2		
18 - 6	9141 - 3504 - 000		COLLAR	1		
18 - 7	SH42 - 7180 - 000		KNOB	1		C/#17791 ~
18 - 8	0520 - 0130 - 015		PIN, cotter	1	D3.0X15ℓ	
18 - 9	1350 - 1808 - 000		SPRING, brake	1		
18 - 10	0350 - 0130 - 613		WASHER	2	M6	
18 - 11	1231 - 4112 - 000		PIN, joint	2		
18 - 12	1438 - 2063 - 012		BAND, wire	2		
18 - 13	A242 - 0104 - 008		SCREW	1	M4X8	
18 - 14	1458 - 2111 - 010		ARM, tension	2		
18 - 15	0520 - 0020 - 015		PIN, cotter	4	D2.5X15ℓ	
18 - 16	1439 - 2101 - 000		WIRE, clutch	2		
18 - 17	1458 - 2113 - 000		JOINT, wire	2		
18 - 18	A300 - 0106 - 001		NUT	2	M6	
18 - 19	1456 - 1465 - 000		SPRING, clutch	2		
18 - 20	1438 - 2105 - 000		PIPE, wire protection	2	D8X150ℓ	
18 - 21	1438 - 2151 - 000		LEVER, side clutch	2		
18 - 22	3610 - 3416 - 000		PIN	2		
18 - 23	0520 - 0120 - 015		PIN, cotter	2	D1.2X15ℓ	
18 - 24	0521 - 0110 - 000		PIN, snap	2	d10	
18 - 25	1438 - 2152 - 010		WIRE, side clutch	2		
18 - 26	1458 - 2113 - 000		JOINT, wire	2		
18 - 27	A300 - 0100 - 601		NUT	2	M6	
18 - 28	1928 - 2301 - 000		LEVER, control	1		
18 - 29	1434 - 0031 - 010		WIRE, control	1		
18 - 30	1458 - 2303 - 000		METAL, wire end	1		

Fig. 19 CONTROL SYSTEM (F TYPE)



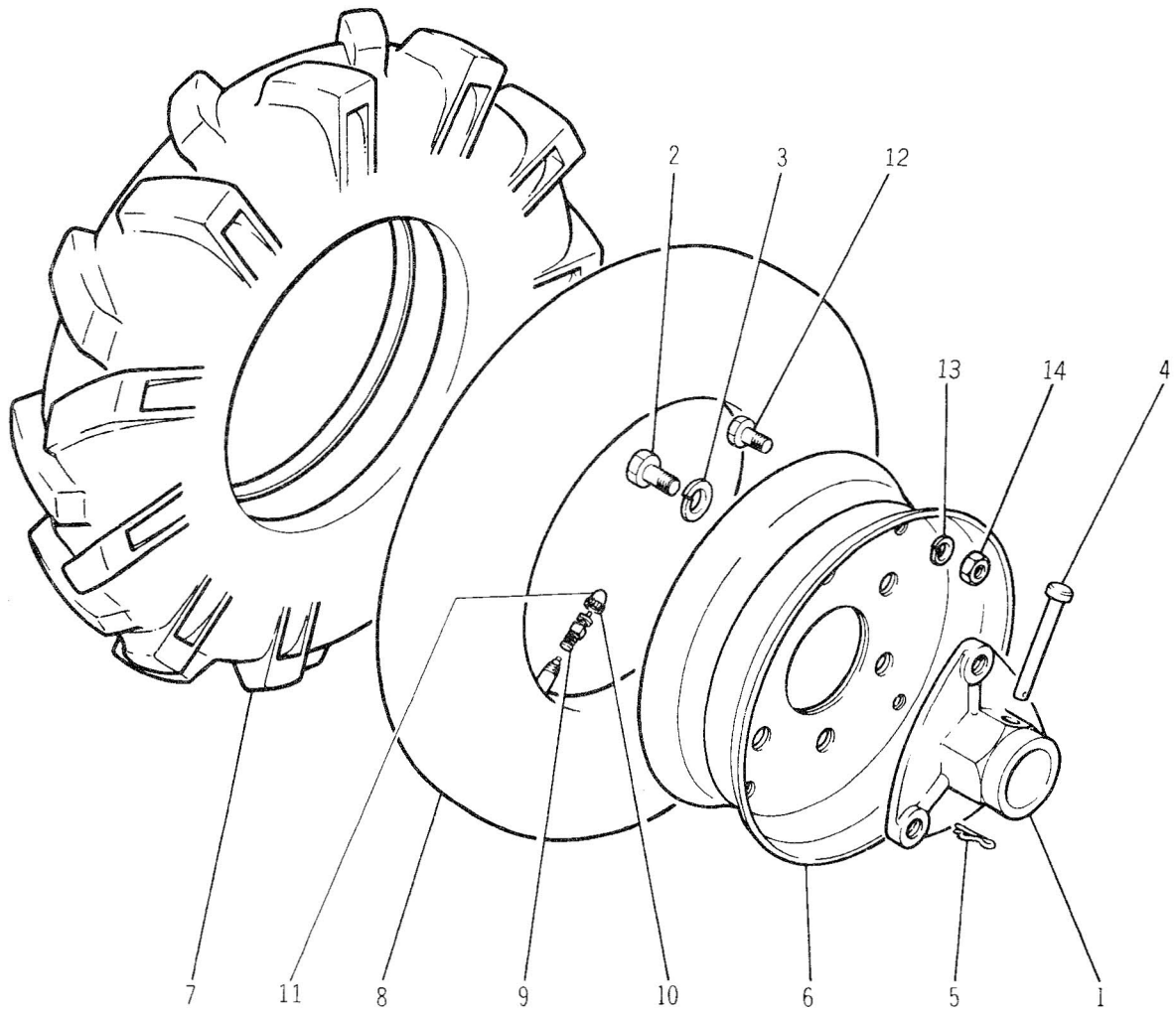
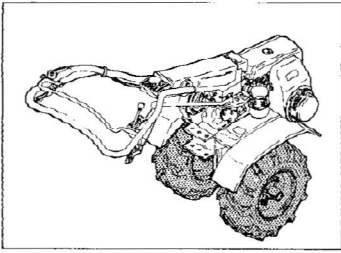
Ref No.	Part No.	R/P	Part Name	Q'ty	Description	Remarks
19 - 1	335F - 2101 - 000		CASE, clutch	1		
19 - 2	F114 - 0108 - 016		BOLT	2	M8X16	
19 - 3	335F - 2105 - 000		ARM	1		
19 - 4	1929 - 2208 - 000		LEVER, change	1		
19 - 5	1456 - 2112 - 000		SHAFT, change lever	2		
19 - 6	9141 - 3504 - 000		COLLAR	1		
19 - 7	SH42 - 7180 - 000		KNOB	1		
19 - 8	0520 - 0130 - 015		PIN, cotter	1	D3.0X15ℓ	
19 - 9	1350 - 1808 - 000		SPRING, brake	1		
19 - 10	0350 - 0130 - 613		WASHER	2	M6	
19 - 11	1231 - 4112 - 000		PIN, joint	2		
19 - 12	1438 - 2063 - 010		BAND, wire	3		
19 - 13	A242 - 0104 - 008		SCREW	1	M4X8	
19 - 14	1458 - 2111 - 010		ARM, tension	2		
19 - 15	0520 - 0020 - 015		PIN, cotter	4	D2.0X15ℓ	
19 - 16	1439 - 2101 - 000		WIRE, clutch	2		
19 - 17	1458 - 2113 - 000		JOINT, wire	2		
19 - 18	A300 - 0106 - 001		NUT	2	M6	
19 - 19	1456 - 1465 - 000		SPRING, clutch	2		
19 - 20	1438 - 2105 - 613		PIPE, wire protection	2	D8X150ℓ	
19 - 21	1438 - 2151 - 000		LEVER, side clutch	2		
19 - 22	0321 - 0110 - 000		PIN, snap	2	d10	
19 - 23	1438 - 2152 - 100		WIRE, side clutch	2		
19 - 24	1458 - 2113 - 000		JOINT, wire	2		
19 - 25	A300 - 0106 - 001		NUT	2	M6	
19 - 26	1928 - 2301 - 000		LEVER, control	1		
19 - 27	1434 - 0031 - 010		WIRE, control	1		
19 - 28	1458 - 2303 - 000		METAL, wire end	1		
19 - 29	335F - 2131 - 000		STUD	1		
19 - 30	335F - 2132 - 000		LEVER	1		
19 - 31	A360 - 0100 - 802		WASHER, spring	1	M8	
19 - 32	A301 - 0108 - 001		NUT	1	M8	
19 - 33	335F - 2133 - 000		SPRING	1		
19 - 34	335F - 0367 - 000		LEVER, switch (R. H)	1		
19 - 35	335F - 0368 - 000		LEVER, switch (L. H)	1		
19 - 36	335F - 0374 - 000		GRIP	2		
19 - 37	0350 - 0130 - 613		WASHER	2	M6	
19 - 38	335F - 0376 - 000		PIN	2		
19 - 39	0520 - 0020 - 015		PIN, cotter	2	D2.0X15ℓ	

Fig. 19 CONTROL SYSTEM (F TYPE)



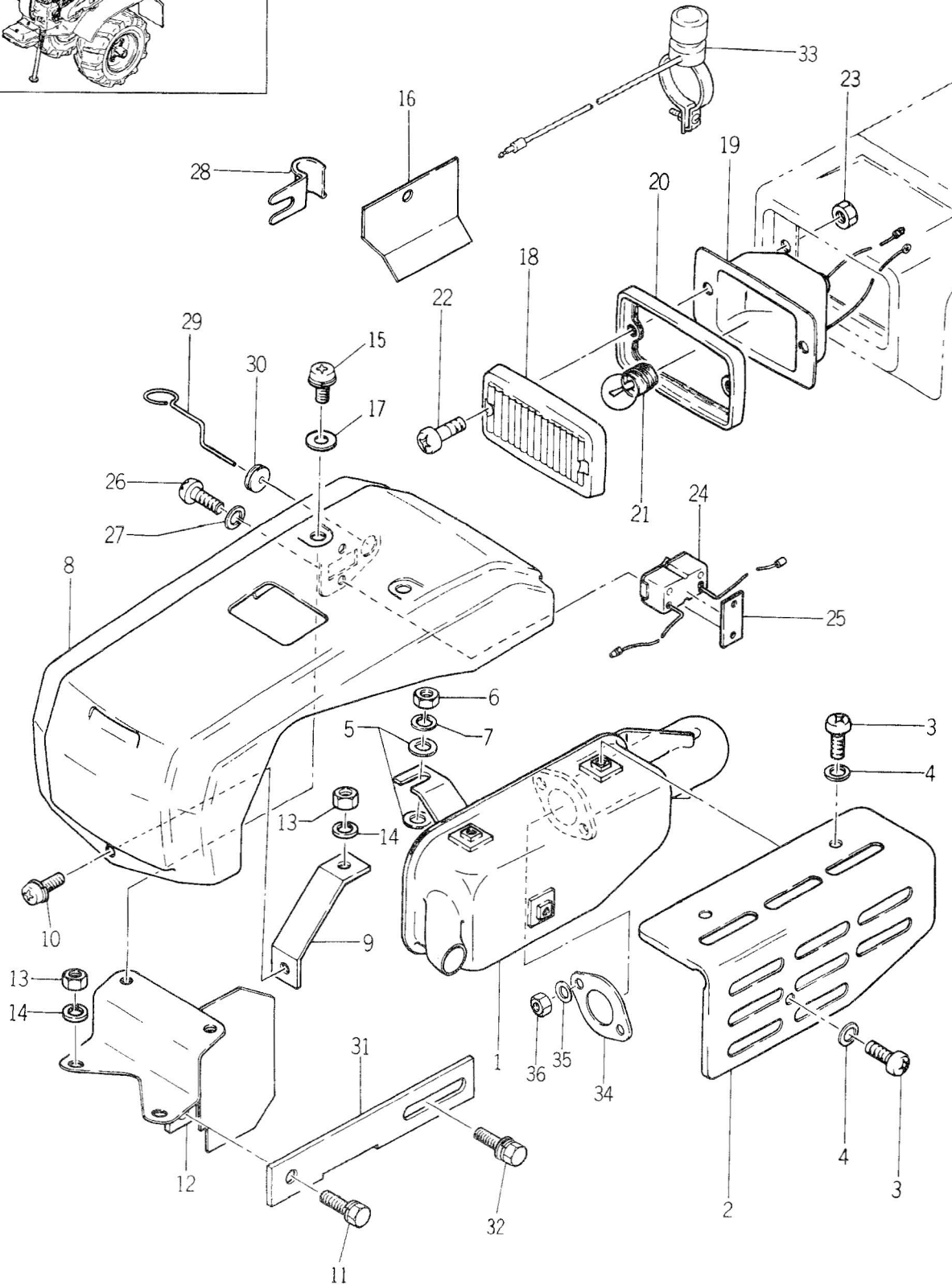
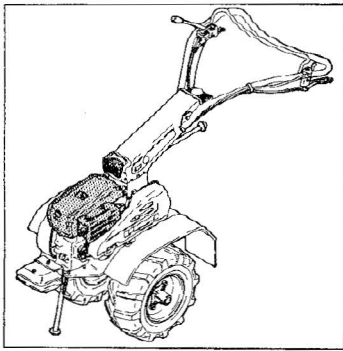
Ref No.	Part No.	R/P	Part Name	Q'ty	Description	Remarks
19 - 40	335F - 0377 - 000		SPRING	2		
19 - 41	335F - 0364 - 000		SWITCH	2		
19 - 42	335F - 0378 - 000		SWITCH	1		
19 - 43	335F - 0361 - 000		CORD (A)	1		
19 - 44	335F - 0362 - 000		CORD (B)	1		
19 - 45	335F - 0363 - 000		CORD (C)	1		
19 - 46	335F - 0379 - 000		PLATE	2		
19 - 47	A300 - 0106 - 001		NUT	2	M6	
19 - 48	A360 - 0100 - 602		WASHER, spring	3	M6	
19 - 49	0350 - 0130 - 613		WASHER	2	M6	
19 - 50	A100 - 0106 - 012		BOLT	1	M6X12	

Fig. 20 WHEEL SYSTEM (F TYPE)



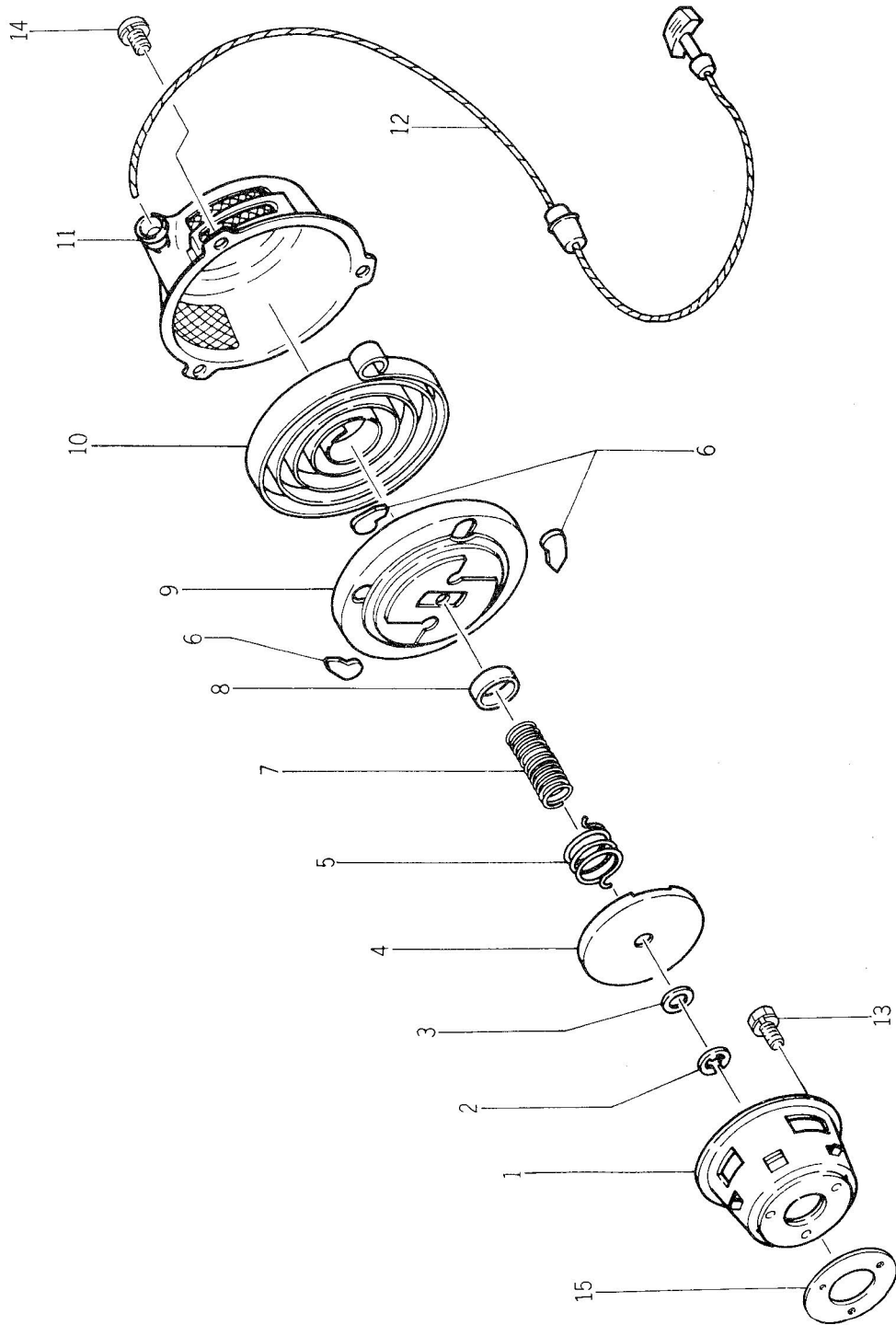
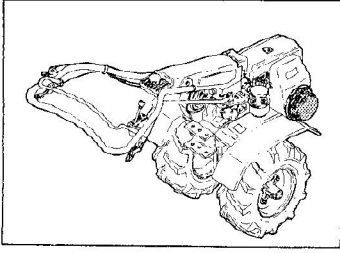
Ref No.	Part No.	R/P	Part Name	Q'ty	Description	Remarks
20 - 1	335F - 1331 - 010		BOSS, wheel	2		
20 - 2	A100 - 0112 - 020		BOLT	6	M12X20	
20 - 3	A360 - 0101 - 202		WASHER, spring	6	M12	
20 - 4	0560 - 0110 - 063		PIN, wheel tube	2	D10X630	
20 - 5	0521 - 0110 - 000		PIN, snap	2	d10	
20 - 6	1420 - 1323 - 000		WHEEL, tyre	2		
20 - 7	0882 - 0400 - 082		TYRE	2	400 - 8	
20 - 8	0892 - 0400 - 080		TUBE	2	400 - 8	
20 - 9	1411 - 1345 - 000		VALVE	2		
20 - 10	1310 - 5051 - 400		VALVE, cap	2		
20 - 11	1310 - 5051 - 000		CAP	2		
20 - 12	A110 - 0108 - 016		BOLT	8	M8X16	
20 - 13	A360 - 0100 - 802		WASHER, spring	8	M8	
20 - 14	A301 - 0108 - 001		NUT	8	M8	

Fig. 21 MUFFLER, BONNET AND LAMP



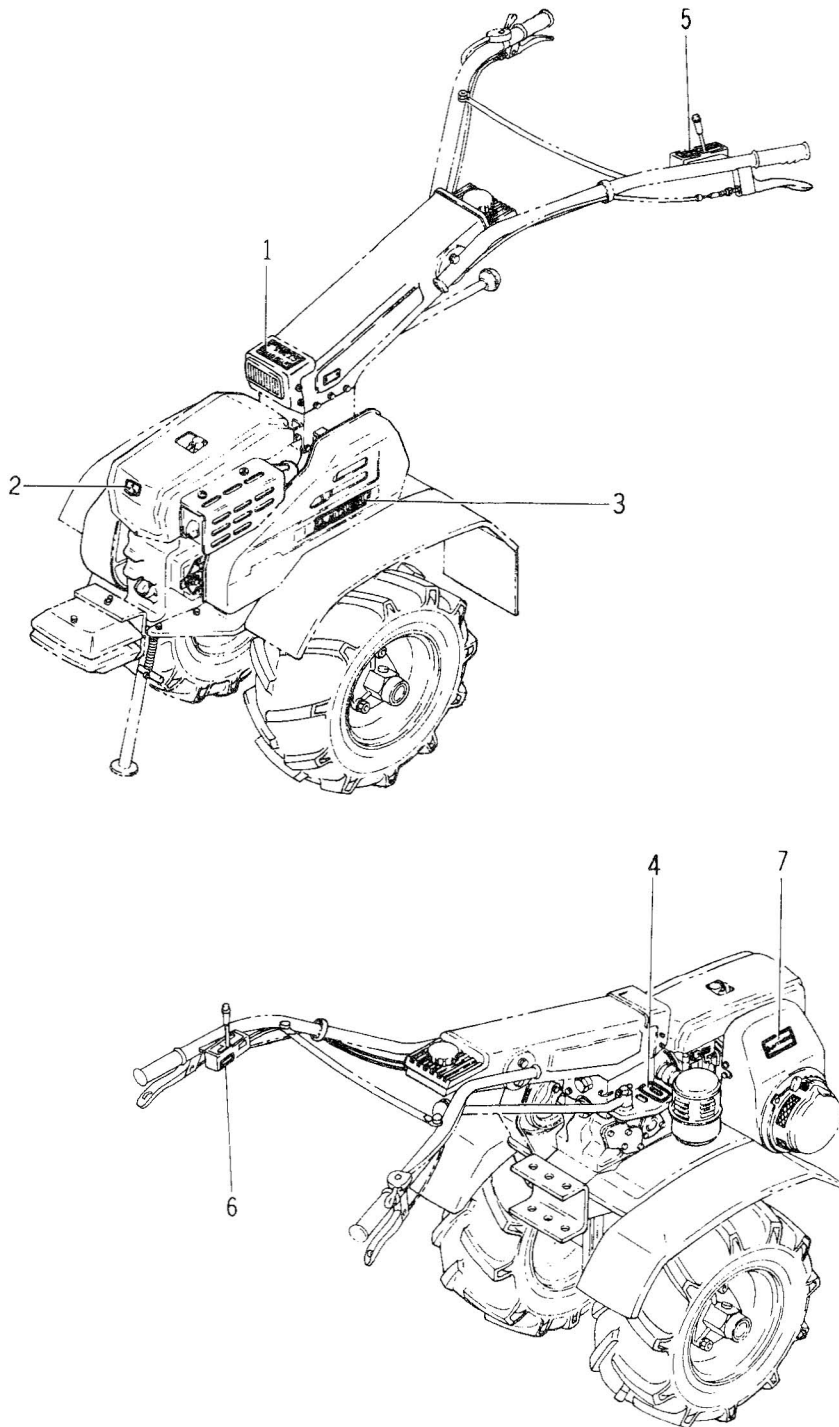
Ref No.	Part No.	R/P	Part Name	Q'ty	Description	Remarks
21 - 1	1928 - 0011 - 000		MUFFLER	1		
21 - 2	1438 - 0022 - 000		COVER, muffler	1		
21 - 3	A242 - 0206 - 010		SCREW	3	M6X10	
21 - 4	0350 - 0130 - 613		WASHER	3	M6	
21 - 5	0350 - 0130 - 815		WASHER	2	M8	
21 - 6	1438 - 0027 - 000		NUT	2	M8	
21 - 7	A360 - 0100 - 802		WASHER, spring	1	M8	
21 - 8	1438 - 0101 - 000		BONNET	1		
21 - 9	1438 - 0105 - 000		STAY, bonnet	1		
21 - 10	F242 - 0108 - 016		SCREW	1	M8X16	
21 - 11	F114 - 0108 - 020		BOLT	1	M8X20	
21 - 12	1438 - 0106 - 110		BRACKET	1		
21 - 13	A301 - 0108 - 001		NUT	3	M8	
21 - 14	A360 - 0100 - 802		WASHER, spring	3	M8	
21 - 15	F242 - 0108 - 016		SCREW	2	M8X16	
21 - 16	1438 - 0002 - 000		COVER, strainer	1		
21 - 17	0350 - 0130 - 815		WASHER	AR	M8	
21 - 0 - 1	1438 - 0152 - 000		LIGHT ASS'Y	1		Consists 18 ~ 22
21 - 18	1438 - 0152 - 100		LENS	1		
21 - 19	1438 - 0152 - 200		BODY	1		
21 - 20	1438 - 0152 - 300		GASKET	1		
21 - 21	1438 - 0152 - 400		LIGHT	1	6V/15W	
21 - 22	1438 - 0152 - 500		SCREW	2	M4X16	
21 - 23	A300 - 0104 - 001		NUT	2	M4	
21 - 24	1438 - 0153 - 000		LIGHT SWITCH ASS'Y	1		
21 - 25	1438 - 0154 - 000		PLATE, light switch	1		
21 - 26	A242 - 0104 - 030		SCREW	2	M4X30	
21 - 27	A360 - 0100 - 402		WASHER, spring	2	M4	
21 - 28	1473 - 0009 - 000		SUPPORT (A), plug cord	1		
21 - 29	1438 - 0301 - 000		ROD, choke	1		
21 - 30	1438 - 0302 - 010		BUSHING, rod	1		
21 - 31	1438 - 0001 - 000		PLATE, engine connecting	1		
21 - 32	H114 - 0108 - 020		BOLT	1	M8X20	
21 - 33	1928 - 0155 - 000		BUTTON, switch	1		
21 - 34	SFR1 - 8187 - 000		GASKET, muffler	1		
21 - 35	0350 - 0140 - 818		WASHER	2	M8	
21 - 36	A301 - 0108 - 001		NUT	1	M8	

Fig. 22 RECOIL STARTER



Ref No.	Part No.	R/P	Part Name	Q'ty	Description	Remarks
22 - 0 - 1	1439 - 0251 - 000		RECOIL STARTER ASS'Y	1		Consists 1 ~ 12 C/#16895 ~
22 - 1	1438 - 0251 - 200		PULLEY, starter	1		
22 - 2	1438 - 0251 - 201		E - RING	1		
22 - 3	1438 - 0251 - 202		WASHER, thrust	1		
22 - 4	1438 - 0251 - 203		PLATE, friction	1		
22 - 5	1438 - 0251 - 204		SPRING, return	1		
22 - 6	1438 - 0251 - 205		RATCHET	3		
22 - 7	1438 - 0251 - 206		SPRING, friction	1		
22 - 8	1438 - 0251 - 207		WASHER	1		
22 - 9	1438 - 0251 - 208		COMPLETE, reel	1		
22 - 10	1438 - 0251 - 209		SPRING, spiral	1		
22 - 11	1439 - 0251 - 210		CASE, starter	1		
22 - 12	1439 - 0251 - 220		ROPE ASS'Y	1		
22 - 13	F104 - 0106 - 016		BOLT	3	M6X16	
22 - 14	F242 - 0106 - 012		SCREW	3	M6X10	
22 - 15	1439 - 0251 - 300		SPACER	1		

Fig. 23 MARK SYSTEM



Ref No.	Part No.	R/P	Part Name	Q'ty	Description	Remarks
23 - 1	335F - 2801 - 000		PLATE, name	1		
23 - 2	1438 - 2803 - 010		MARK, top	1		
23 - 3	1458 - 2803 - 000		MARK, MITSUBISHI	1		
23 - 4	1438 - 2806 - 000		PLATE, change mark	1		
23 - 5	335F - 2809 - 011		MARK, clutch	1		
23 - 6	1936 - 2815 - 000		MARK, oiling	1		
23 - 7	1928 - 2823 - 000		MARK, engine	1		