



Count on it.

Parts Catalog

**66cm Heavy-Duty Rear Bagger
Lawn Mower**

Model No. 22200TE—Serial No. 310000001 and Up

Ordering Replacement Parts

To order replacement parts, please supply the part number, the quantity, and the description of each part desired.

Understanding Reference Numbers

Each identified part in an illustration has a reference number. The reference number for a part also appears in the parts list, along with other information about the part.

This catalog uses two special reference number formats, one to indicate parts in a service assembly and another to indicate the quantity of a given part in an illustration.

Service Assembly Reference Numbers

Parts in service assemblies have reference numbers in the form a:b. The a represents the reference number of the entire service assembly and the b represents a sequential number unique to each part within the service assembly.

For example, a wheel assembly might be identified by reference number 6, the tire by 6:1, the valve by 6:2, and the wheel by 6:3. When you order the assembly identified by reference number 6, you receive all parts identified by reference numbers 6:1, 6:2, and 6:3. However, you may also order any part individually. Reference numbers of this type appear in illustration and in parts lists.

Reference Numbers Indicating Quantity

In an illustration, if a reference number indicates more than one part, the reference number has the form nX y. The n represents the quantity of the part, the X is the multiplication symbol, and the y represents the reference number.

For example, in an illustration, the reference number 2X 37 means that two of the parts identified by reference number 37 are indicated.

List of Abbreviations

AR: as required

ASM: assembly

BBC: blade brake control

BHTF: button head thread forming

CARR: carriage

CCW: counter clockwise

CW: clockwise

DEG: degrees

ECM: electronic control module

EXT: external

FH: flat head

GA: gauge

HD: heavy-duty

HF: hex flange

HH: hex head

HHF: hex head flange

HHFTF: hex head flange thread forming

HJ: hex jam

HLH: hex lag head

HOC: height-of-cut

HSBH: hex socket button head

HSFH: hex socket flat head

HSH: hex socket head

HWH: hex washer head

HWHTF: hex washer head thread forming

HYD: hydraulic

LH: left hand

LP: Liquid Propane

NI: nylon insert

NPTF: national pipe thread fine

PFH: phillips flat head

PPH: phillips pan head

PPHTF: phillips pan head thread forming

PRH: phillips round head

PTH: phillips truss head

PTO: power-take-off

RH: right hand

ROPS: roll-over protection system

RRB: rear roller brush

SFH: slotted fillister head

SHH: slotted hex head

SHWH: slotted hex washer head

SPH: slotted pan head

SQH: square head

SRH: slotted round head

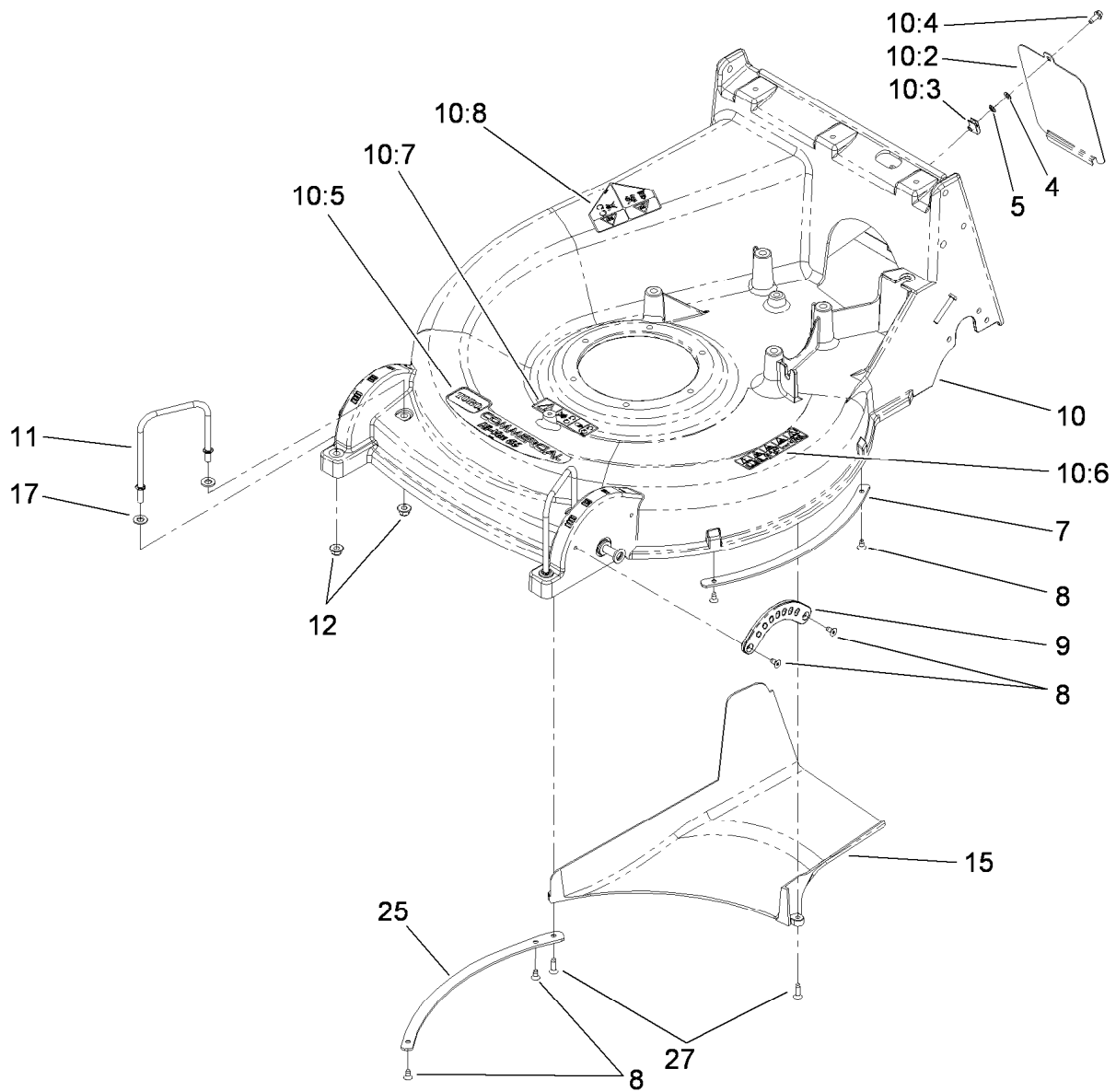
STD: standard

TAP: self tapping

TTH: torx truss head

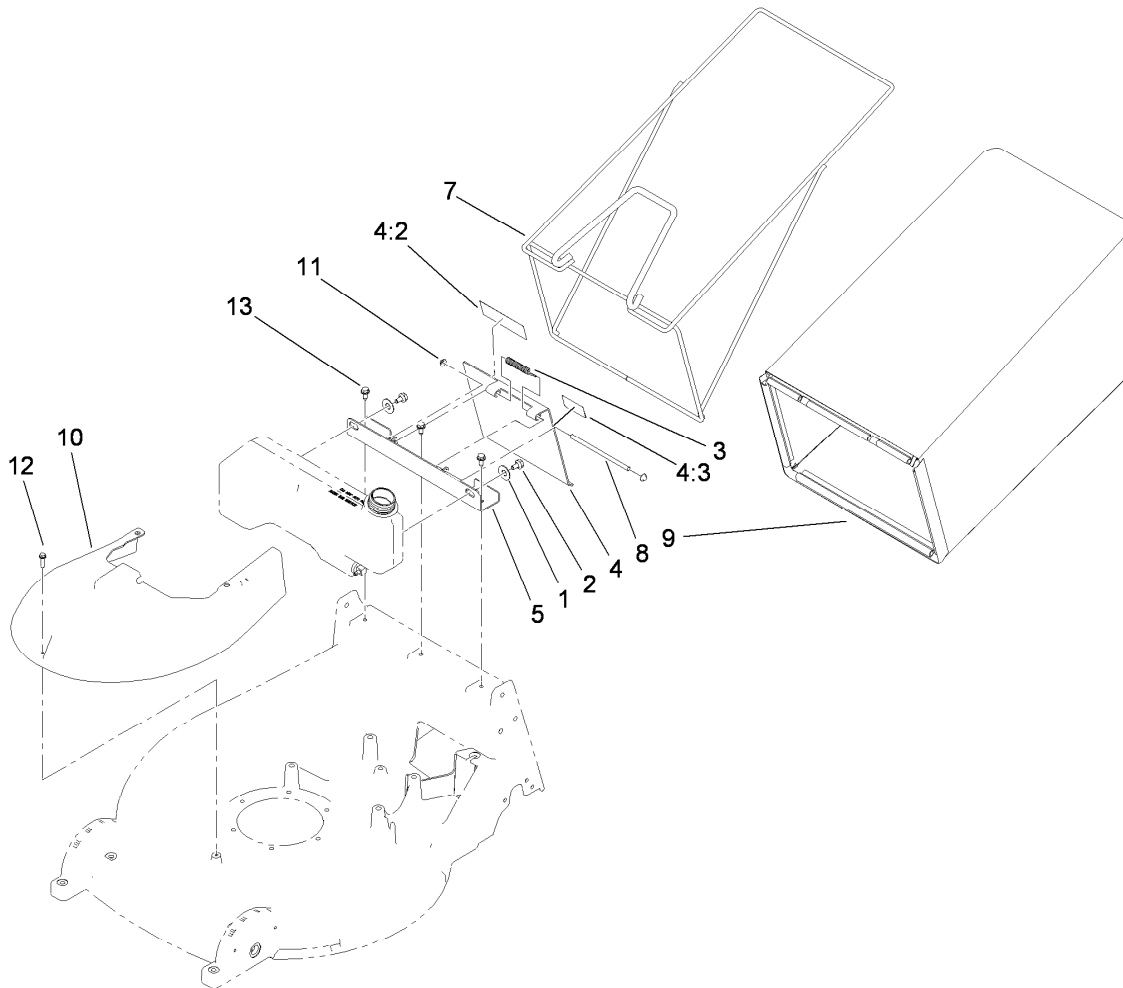
Contents

Housing Assembly	4
Bag and Door Assembly	5
Handle Assembly	6
Gear Case and Pinion Assembly	7
Gear Case Assembly No. 116-0786	8
Engine Assembly	9
Blade Drive Assembly	10
Cutter Housing Assembly No. 107-4065	11
Rear Wheel Assembly	12
Wheel Assembly No. 112-8707	13
Front Wheel Assembly	14
Cylinder and Crankcase Assembly Kawasaki FJ180V-AS64	15
Piston and Crankshaft Assembly Kawasaki FJ180V-AS64	16
Valve and Camshaft Assembly Kawasaki FJ180V-AS64	17
Lubrication Equipment Assembly Kawasaki FJ180V-AS64	18
Cooling Equipment Assembly Kawasaki FJ180V-AS64	19
Electric Equipment Assembly Kawasaki FJ180V-AS64	20
Control Equipment Assembly Kawasaki FJ180V-AS64	21
Carburetor Assembly Kawasaki FJ180V-AS64	22
Air Filter and Muffler Assembly Kawasaki FJ180V-AS64	23
Starter Assembly Kawasaki FJ180V-AS64	24
Label Assembly Kawasaki FJ180V-AS64	25
Attachments and Accessories	26



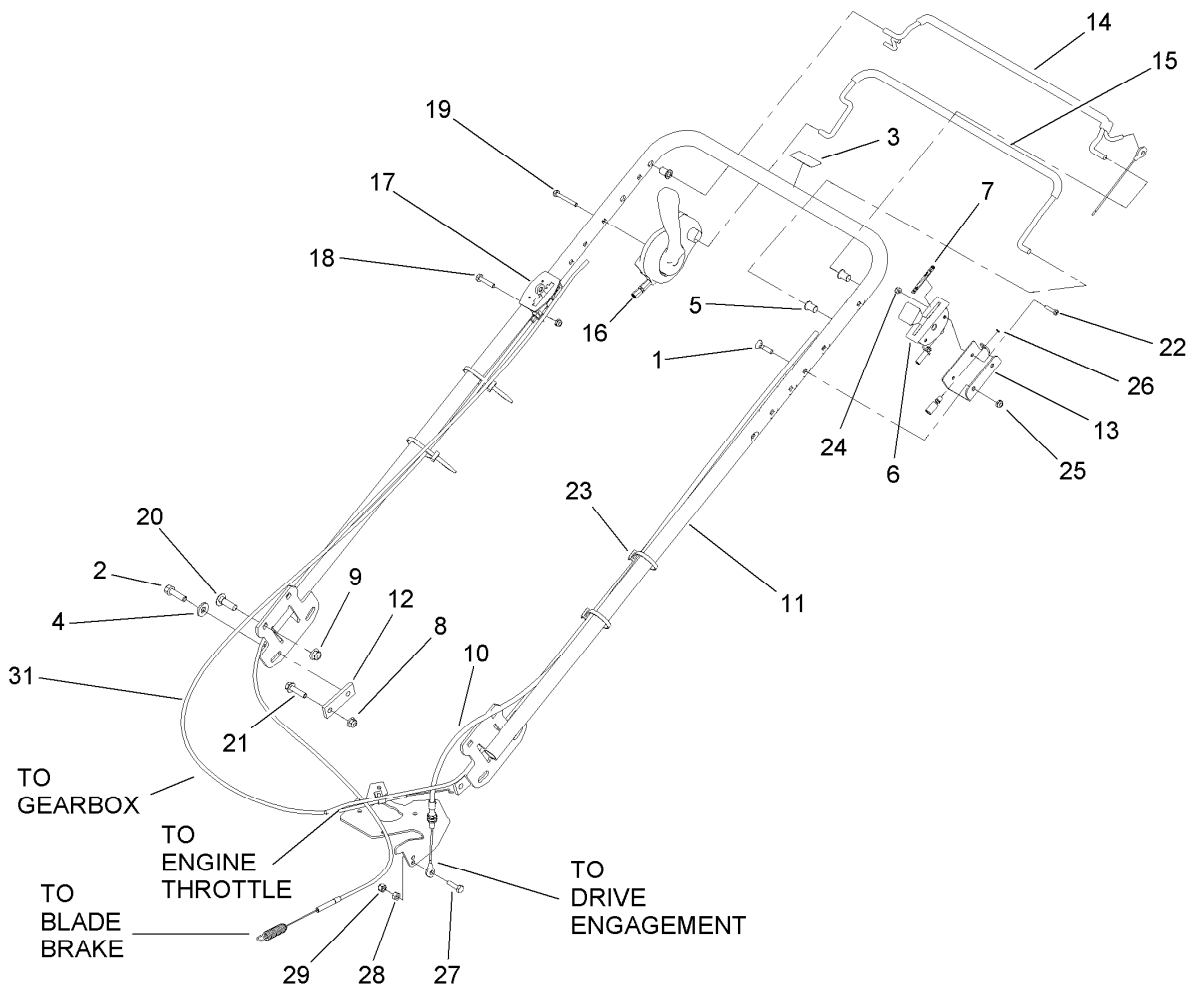
Housing Assembly

Ref.	Part Number	Qty.	Description	Ref.	Part Number	Qty.	Description
4	3256-60	1	Washer-Flat	10:6	110-4978	1	Decal-Danger
5	106-8737	1	Nut-Retainer	10:7	112-9028	1	Decal-Cover Missing
7	116-0059-03	1	Plate-Skid, 10 Gage	10:8	112-8760	1	Decal-Danger
8	103-6145	8	Screw	11	103-8875	2	Handle-Deck
9	103-6460	2	Quadrant-Front	12	104-8301	4	Nut-Flange, NI
10	115-4240	1	Deck ASM	15	116-1405	1	Plastic Chute Kit (W/Screws)
10:2	116-0336	1	Cover-Access, Axle	17	3256-24	4	Washer-Flat
10:3	107069	1	Clip	25	116-1273-03	1	Plate-Skid
10:4	32144-10	1	Screw-HWH	27	116-0606	2	Screw-Torx
10:5	112-8709	1	Decal				



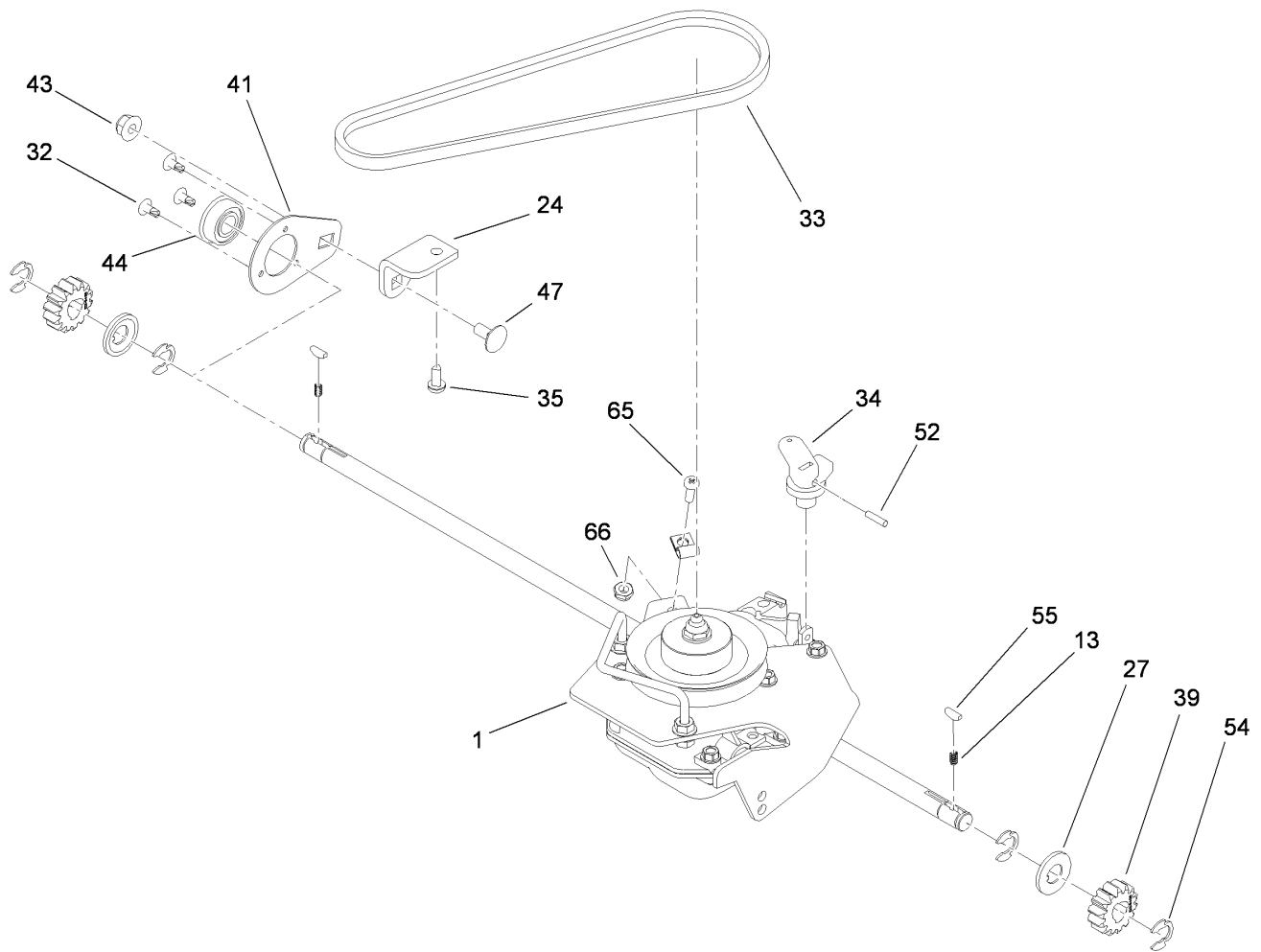
Bag and Door Assembly

<i>Ref.</i>	<i>Part Number</i>	<i>Qty.</i>	<i>Description</i>
1	28-2450	2	Washer-Plastic
2	37-8771	2	Bolt-Shoulder
3	99-5293	1	Spring-Torsion
4	112-9741	1	Door ASM
4:2	110-4977	1	Decal-Danger
4:3	115-4207	1	Decal-Grease
5	103-8223-03	1	Bracket-Mount, Bag/Door
7	109-2445-03	1	Frame-Bag
8	109-2453	1	Rod-Pivot, Door
9	110-5029	1	Grass Bag ASM
10	114-3413	1	Cover-Spindle
11	32112-11	2	Nut-Push
12	32144-86	1	Screw-HWHTF
13	32144-70	3	Screw-HWHTF



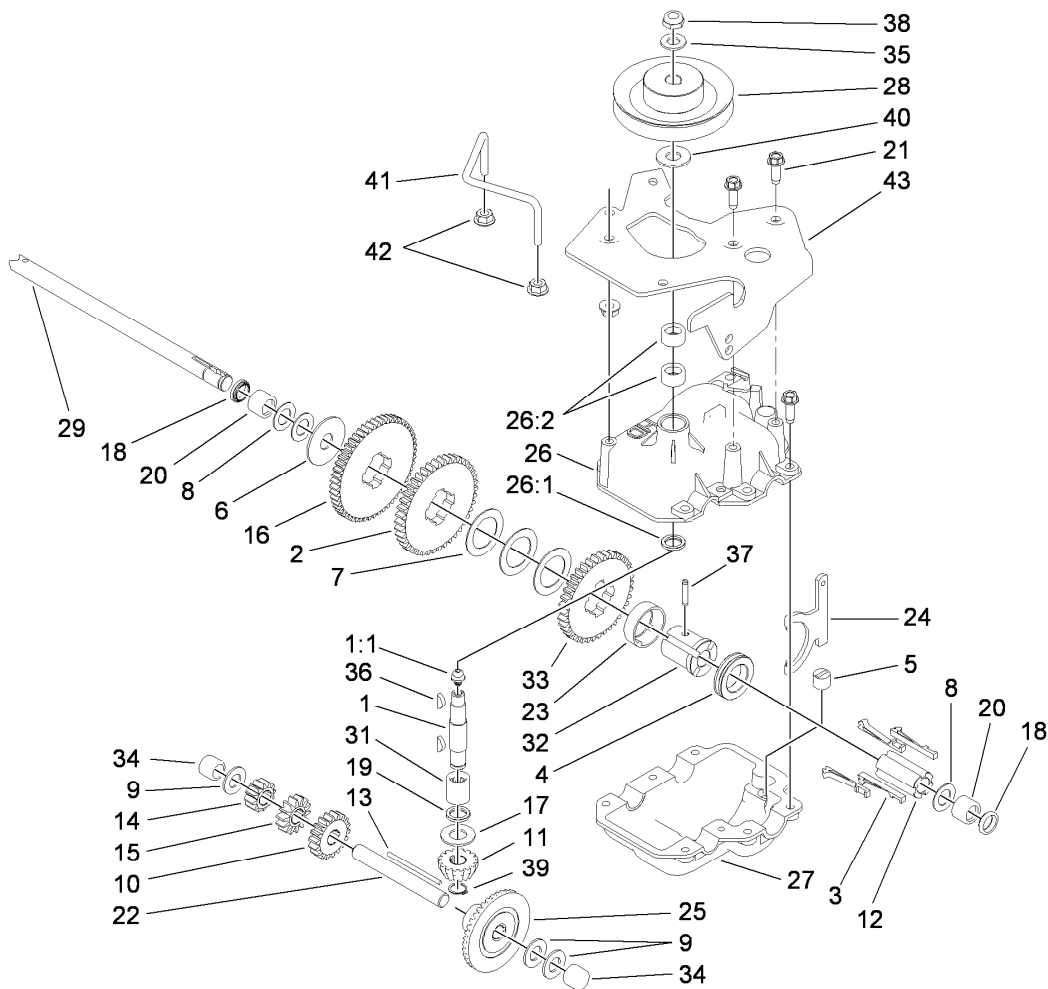
Handle Assembly

<i>Ref.</i>	<i>Part Number</i>	<i>Qty.</i>	<i>Description</i>	<i>Ref.</i>	<i>Part Number</i>	<i>Qty.</i>	<i>Description</i>
1	109-8144	2	Bolt-Handle	16	116-1079	1	Control-BBC
2	95-1727	2	Screw-Taptite	17	116-0504	1	Control-Shift
3	98-4387	1	Decal-Protection, Ear	18	321-8	2	Screw-HH
4	98-5975	2	Washer-Belleville	19	33113-045	1	Screw-HH
5	109-2713	3	Bushing	20	3231-25	2	Screw-CARR
6	103-6123	1	Control-Throttle	21	3234-36	2	Screw-HHF
7	103-6328	1	Decal-Throttle / Choke	22	3250-27	2	Screw-PPH
8	104-8300	2	Nut-Flange, NI	23	3290-378	4	Tie-Cable
9	104-8301	2	Nut-Flange, NI	24	3296-2	2	Nut-Lock, NI
10	109-2212	1	Cable-Traction	25	3296-56	2	Nut-Lock, NI
11	109-2441-03	1	Handle	26	32151-86	1	E-Ring
12	109-2643-03	2	Nut-Handle	27	321-6	1	Screw-HH
13	109-2821-03	1	Bracket-Control	28	3217-5	1	Nut-Hex
14	116-0389	1	Traction Bail With Grip ASM	29	3296-42	1	Nut-Lock, NI
15	109-2826	1	Bail-BBC (With Grip)	31	109-4115	1	Cable-Shifter



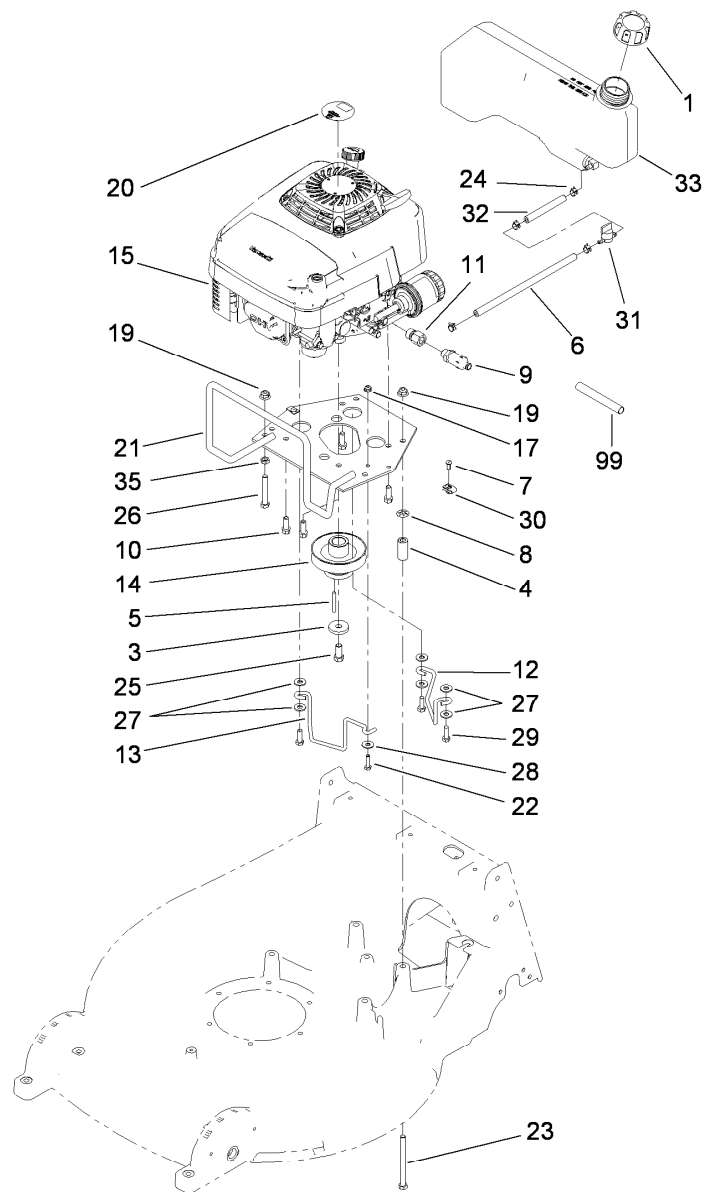
Gear Case and Pinion Assembly

<i>Ref.</i>	<i>Part Number</i>	<i>Qty.</i>	<i>Description</i>
1	116-0786	1	Gear Case ASM
13	39-9650	2	Spring-Compression
24	116-0222	1	Bracket-Bearing, Plated
27	62-3830	2	Washer-Thrust, Outer
32	92-9665	3	Screw-TAP
33	103-6114	1	Belt-V, Traction
34	103-6138	1	Lever-Shift
35	32144-85	1	Screw-HWH
39	103-6436	2	Gear-Pinion, 14 Tooth
41	109-6612	1	Plate-Bearing
43	104-8300	1	Nut-Flange, NI
44	251-180	1	Bearing-Ball
47	3230-23	1	Screw-CARR
52	32121-99	1	Pin-Coil
54	32151-68	4	Ring-Retaining
55	612066	2	Key
65	3274-31	1	Screw-HSBH
66	3296-56	1	Nut-Lock, NI



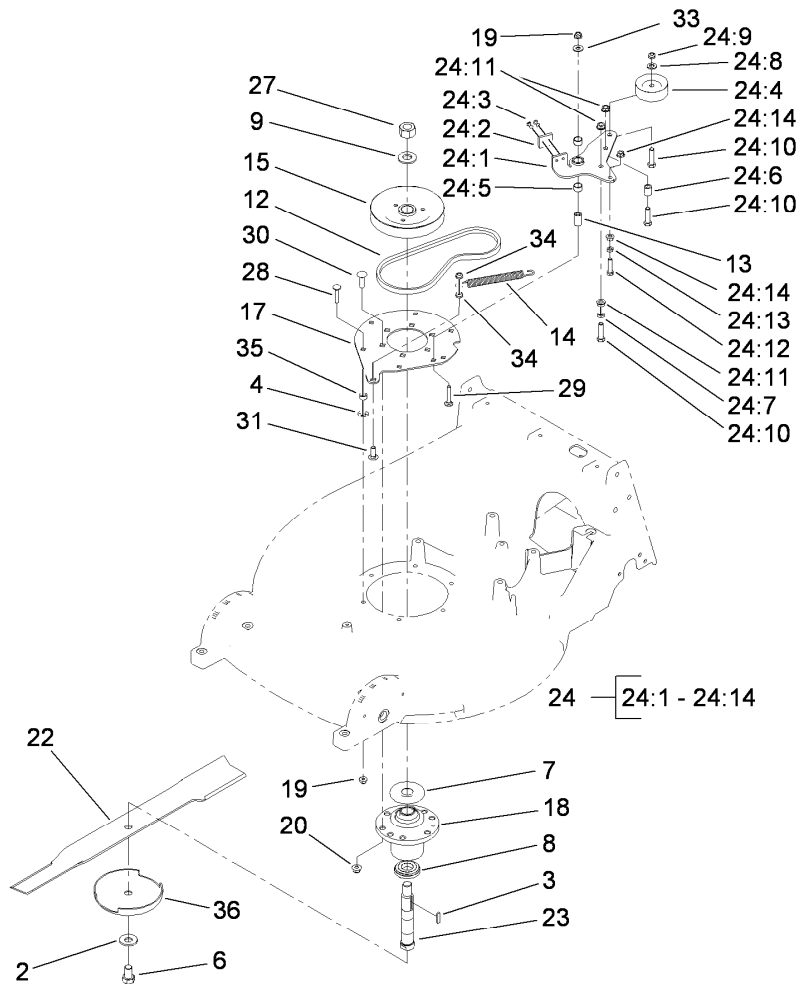
Gear Case Assembly No. 116-0786

<i>Ref.</i>	<i>Part Number</i>	<i>Qty.</i>	<i>Description</i>	<i>Ref.</i>	<i>Part Number</i>	<i>Qty.</i>	<i>Description</i>
1	13-5149	1	Input Shaft ASM	22	53-7950	1	Shaft-Intermediate
1:1	302-63	1	Zerk	23	55-8020	1	Retainer-Key
2	29-9271	1	Gear-42T	24	60-8870	1	Yoke-Shift
3	29-9330	4	Key-Shift	25	74-1760	1	Gear-Bevel
4	29-9340	1	Collar-Shift	26	13-9739	1	Upper Gearcase ASM
5	29-9570	1	Bushing-Yoke	26:1	47-7260	1	Seal
6	29-9690	1	Washer	26:2	47-7270	2	Bearing
7	36-4770	3	Washer	27	74-1920	1	Case-Gear, Lower
8	36-4780	3	Washer-Plain	28	103-6429	1	Sheave
9	36-4792	3	Washer-Thrust	29	103-6435	1	Shaft-Axle
10	39-6650	1	Gear-18T	31	103-9773	1	Bearing-Roller, Caged
11	39-6660	1	Pinion-Bevel	32	109-2642	1	Sleeve-4 Dog
12	39-6720	1	Sleeve	33	109-3130	1	Gear-38T (High Strength)
13	39-7842	1	Key	34	252-103	2	Bearing-Closed
14	46-3540	1	Gear-12T	35	3256-45	1	Washer-Flat
15	46-3550	1	Gear-14T	36	3257-1	2	Key-Woodruff
16	46-3560	1	Gear	37	3285-19	1	Pin-Groove
17	47-2910	1	Washer-Thrust	38	3296-5	1	Nut-Lock
18	47-6730	2	Seal-Oil	39	32151-57	1	Ring-Retaining
19	47-7260	1	Seal	40	109-3614	1	Washer
20	117-3500	2	Bearing-Caged Needle Roller	41	103-8224	1	Guide-Belt
21	49-2040	9	Screw-HWHTF	42	32128-33	4	Nut-HF
				43	116-0339-03	1	Bracket-Guide, Belt



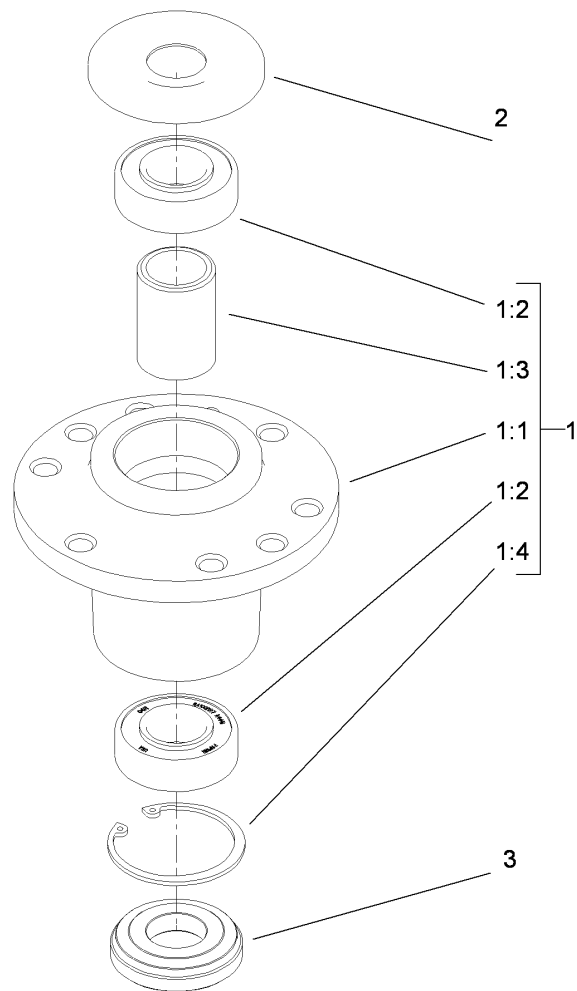
Engine Assembly

Ref.	Part Number	Qty.	Description	Ref.	Part Number	Qty.	Description
1	93-7198	1	Gas Cap ASM	20	110-0520	1	Decal
3	1-543610	1	Washer-Clutch	21	116-0972-03	1	Plate-Engine
4	116-1182	4	Spacer	22	321-6	1	Screw-HH
5	7-0036	1	Key-Square	23	323-23	4	Screw-HH
6	109-0294	1	Hose-Fuel	24	2412-98	4	Clamp
7	63-8590	2	Screw	25	3212-4	1	Screw-HH
8	78-7170	4	Ring-Retaining	26	323-12	1	Screw-HH
9	92-6877	1	Valve-Drain, Oil	27	3256-3	6	Washer-Flat
10	95-1726	4	Screw-Taptite	28	3290-456	1	Washer-Belleville
11	103-1966	1	Adapter	29	33114-025	3	Screw-HH
12	116-0860	1	Guide-Belt, Rear	30	107069	2	Clip
13	116-0859	1	Guide-Belt, Front	31	1-603770	1	Valve-Fuel
14	116-0822	1	Sheave-Drive	32	109-0295	1	Hose-Fuel
15	110-5045	1	Engine-Kawasaki, Fj180V-As64	33	109-3851	1	Fuel Tank ASM
17	104-7201	1	Nut-HF	35	3218-3	1	Nut-Jam
19	104-8301	5	Nut-Flange, NI	99	103-1964	1	Hose-Drain, Oil



Blade Drive Assembly

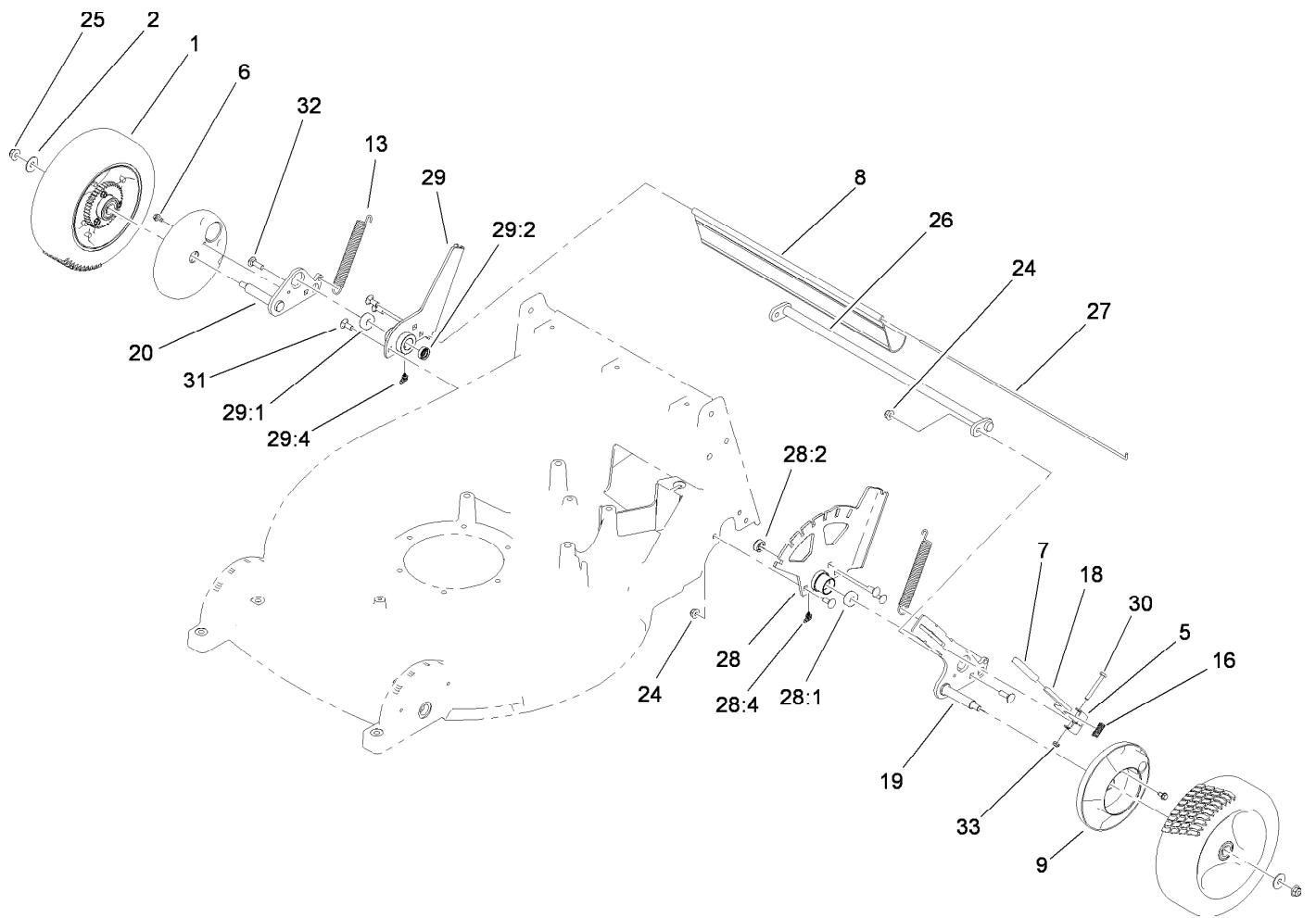
Ref.	Part Number	Qty.	Description	Ref.	Part Number	Qty.	Description
2	1-513208	1	Washer-Spring	24:3	103-0138	2	Rivet-Pop
3	1-807268	1	Key-Rectangle	24:4	109-3546	1	Pulley-Idler
4	78-7170	6	Ring-Retaining	24:5	103-6111	2	Bearing
6	103-1026	1	Screw-Cap	24:6	1-633080	1	Bushing-Lever, Lift
7	103-1330	1	Guard-Bearing, Top	24:7	3218-3	2	Nut-Jam
8	103-2535	1	Spacer-Guard, Bottom	24:8	3256-24	1	Washer-Flat
9	103-2802	1	Washer	24:9	3296-59	1	Nut-Lock, NI
12	116-0823	1	Belt	24:10	323-8	3	Screw-HH
13	103-7108	1	Bushing-Arm, Idler	24:11	3290-357	3	Nut-HHF, Whiz
14	103-7896	1	Spring-Brake	24:12	1-403180	1	Screw-HH
15	116-0821	1	Sheave-Split, Steel (W/Hub)	24:13	3218-2	1	Nut-Jam
17	116-0092-03	1	Plate-Adapter, Housing	24:14	32128-20	2	Nut-HF
18	107-4065	1	Cutter Housing Service ASM	27	3217-46	1	Nut-HH
19	104-8300	7	Nut-Flange, NI	28	3230-4	6	Screw-CARR
20	104-8301	6	Nut-Flange, NI	29	116-0629	1	Screw-CARR
22	109-0343	1	Blade	30	3231-28	6	Screw-CARR
23	109-2650	1	Shaft-Spindle	31	3231-22	1	Screw-CARR
24	116-0096	1	Idler Arm ASM	33	3256-3	1	Washer-Flat
24:1	116-0085-03	1	Arm-Idler	34	3296-59	3	Nut-Lock, NI
24:2	116-0959	1	Pad-Brake	35	111044	6	Spacer
				36	67-7561	1	Cup-Scalp, Anti



Cutter Housing Assembly No. 107-4065

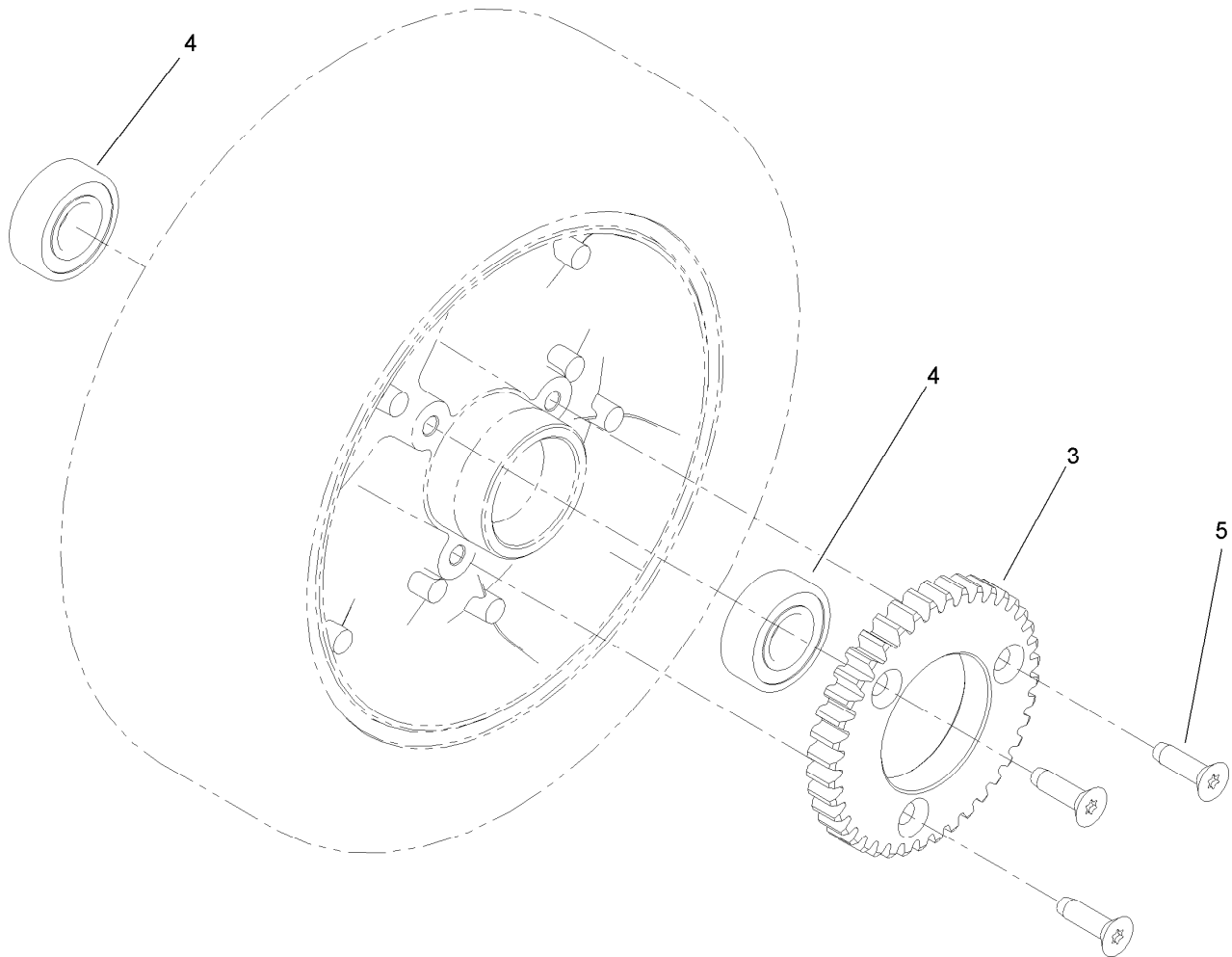
<i>Ref.</i>	<i>Part Number</i>	<i>Qty.</i>	<i>Description</i>
1		1	Cutter Housing ASM ●
1:1	103-7975	1	Housing-Spindle
1:2	103-2477	2	Bearing-Jackshaft
1:3	103-2534	1	Spacer-Bearing
1:4	32120-8	1	Ring-Snap
2	103-1330	1	Guard-Bearing, Top
3	103-2535	1	Spacer-Guard, Bottom

● Not serviced separately



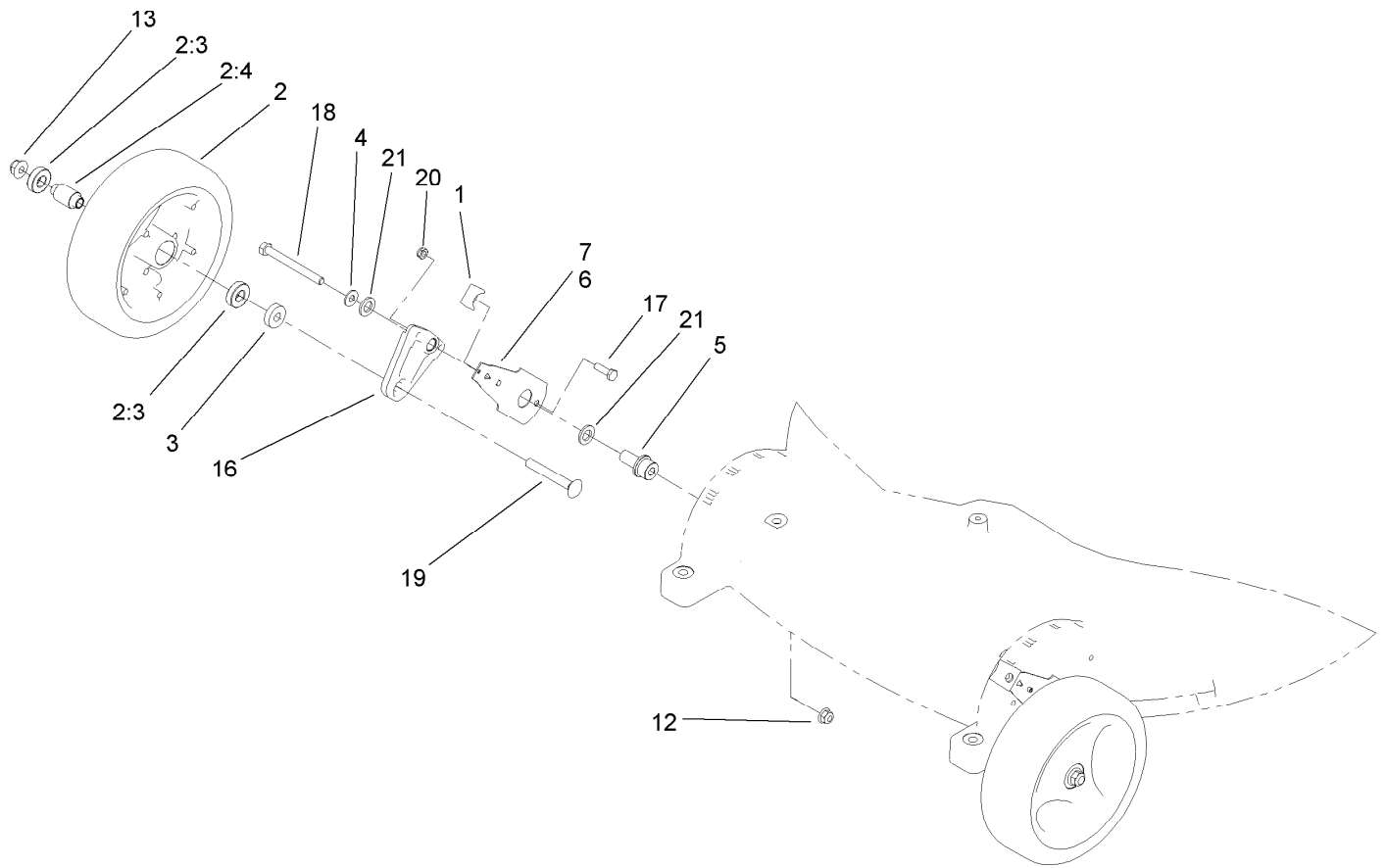
Rear Wheel Assembly

Ref.	Part Number	Qty.	Description	Ref.	Part Number	Qty.	Description
1	112-8707	2	10 Inch Wheel ASM	26	109-2456-03	1	Rod-Torque
2	52-2860	2	Washer	27	109-2458	1	Rod-Shield
5	103-6158	1	Bracket-Pivot, Lift	28	109-2833	1	LH Bearing Support ASM
6	12-3270	2	Screw	28:1	103-6110	1	Bearing-Axle, Rear
7	103-6165	1	Cover-Handle	28:2	103-7654	1	Seal-Axle
8	109-5974	1	Shield-Rear	28:4	103-8864	1	Fitting-Grease
9	103-6441	2	Cover-Gear	29	109-2834	1	RH Bearing Support ASM
13	103-7659	2	Spring-Assist, Lift	29:1	103-6110	1	Bearing-Axle, Rear
16	103-7897	1	Spring-Latch	29:2	103-7654	1	Seal-Axle
18	103-8226	1	Lever-Lift	29:4	103-8864	1	Fitting-Grease
19	103-8227	1	Arm-Axle, LH	30	321-10	1	Screw-HH
20	103-8229	1	Arm-Axle, RH	31	3230-1	6	Bolt-CARR
24	104-8300	8	Nut-Flange, NI	32	3230-2	2	Bolt-CARR
25	104-8301	2	Nut-Flange, NI	33	3296-56	1	Nut-Lock, NI



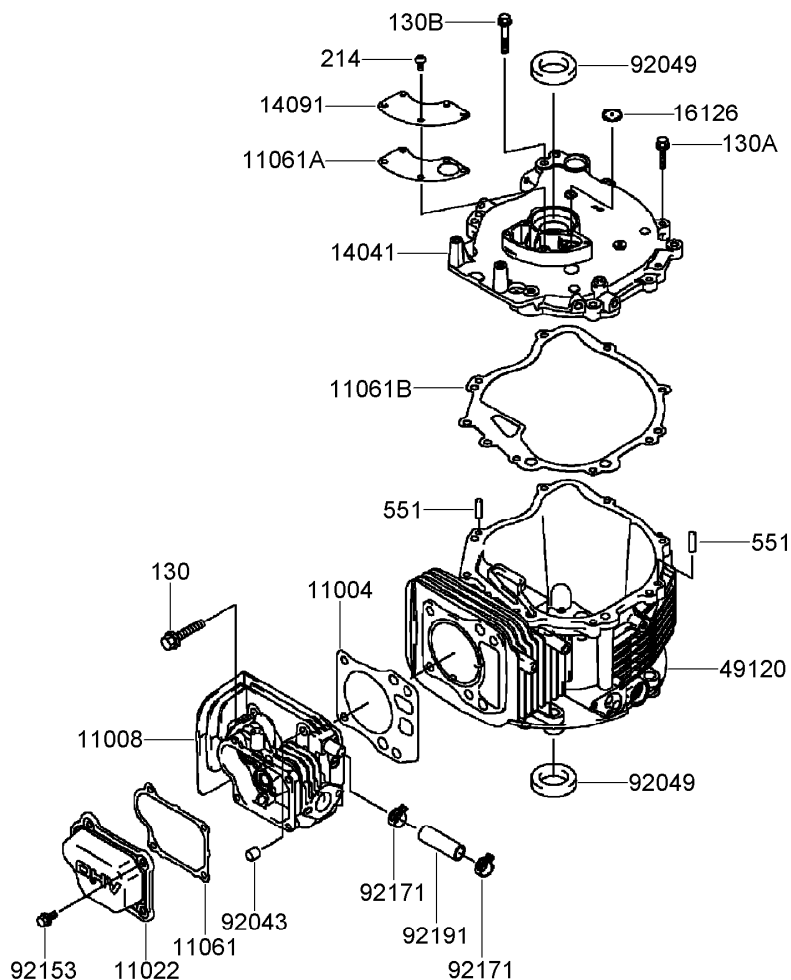
Wheel Assembly No. 112-8707

<i>Ref.</i>	<i>Part Number</i>	<i>Qty.</i>	<i>Description</i>
3	103-6445	1	Gear-Driven
4	103-6103	2	Bearing-Ball
5	116-0606	3	Screw-Torx



Front Wheel Assembly

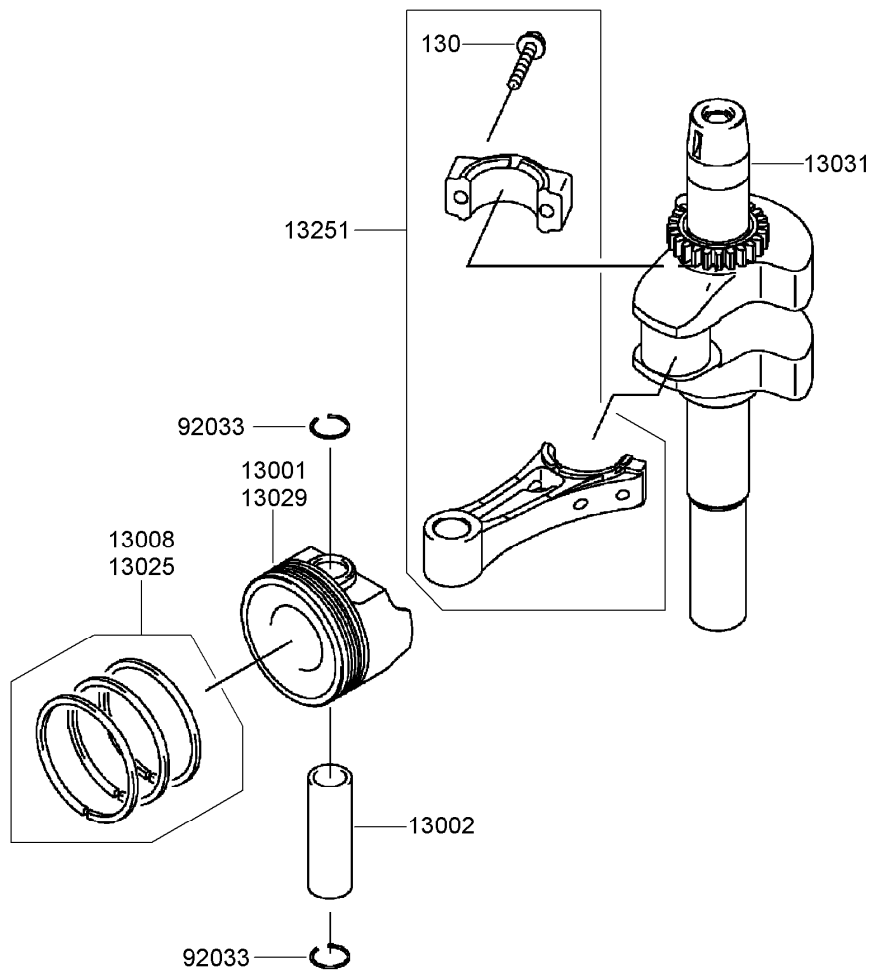
<i>Ref.</i>	<i>Part Number</i>	<i>Qty.</i>	<i>Description</i>
1	25-7740	2	Knob-Arm
2	112-8706	2	8 Inch Wheel ASM
2:3	52-2450	2	Bearing-Wheel
2:4	103-7649	1	Spacer-Wheel, Front
3	62-6660	2	Spacer
4	98-3499	2	Washer-Flat
5	109-6041	2	Bushing-Pivot, Wheel
6	103-5847	1	LH Front Spring Arm ASM
7	103-5848	1	RH Front Spring Arm ASM
12	104-8300	2	Nut-Flange, NI
13	104-8301	2	Nut-Flange, NI
16	109-2843	2	Front Pivot Arm ASM
17	321-5	2	Screw-HH
18	322-20	2	Screw-HH
19	3231-9	2	Screw-CARR
20	3296-56	2	Nut-Lock, NI
21	77-0350	4	Washer-Thrust, Nylon



Cylinder and Crankcase Assembly Kawasaki FJ180V-AS64

Ref.	Part Number	Qty.	Description
11004	11004-7020	1	Gasket-Head ●
11008	11008-7025	1	Head-Cylinder ●
11022	11022-7005	1	Case-Rocker ●
11061	11061-7023	1	Gasket-Case, Rocker ●
11061A	11061-7031	1	Gasket-Breather ●
11061B	11061-7060	1	Gasket-Cover, Crankcase ●
14041	14041-7009	1	Cover ASM ●
14091	14091-7010	1	Cover-Breather ●
16126	16126-7014	1	Valve-Breather ●
49120	49120-7082	1	Crankcase ●
92043	92043-7001	2	Pin ●
92049	92049-7008	2	Seal-Oil (28-44-9 T C) ●
92153	92153-7043	4	Bolt (6X12) ●
92171	92171-7024	2	Clamp ●
92191	92191-7025	1	Tube (12X16X49) ●
130	130CA0840	4	Bolt-Flanged (8X40) ●
130A	130G0625	7	Bolt-Flanged (6X25) ●
130B	130G0635	1	Bolt-Flanged (6X35) ●
214	214B0510	5	Screw-Pan (5X10) ●
551	551A0612	2	Pin-Dowel (6X12) ●

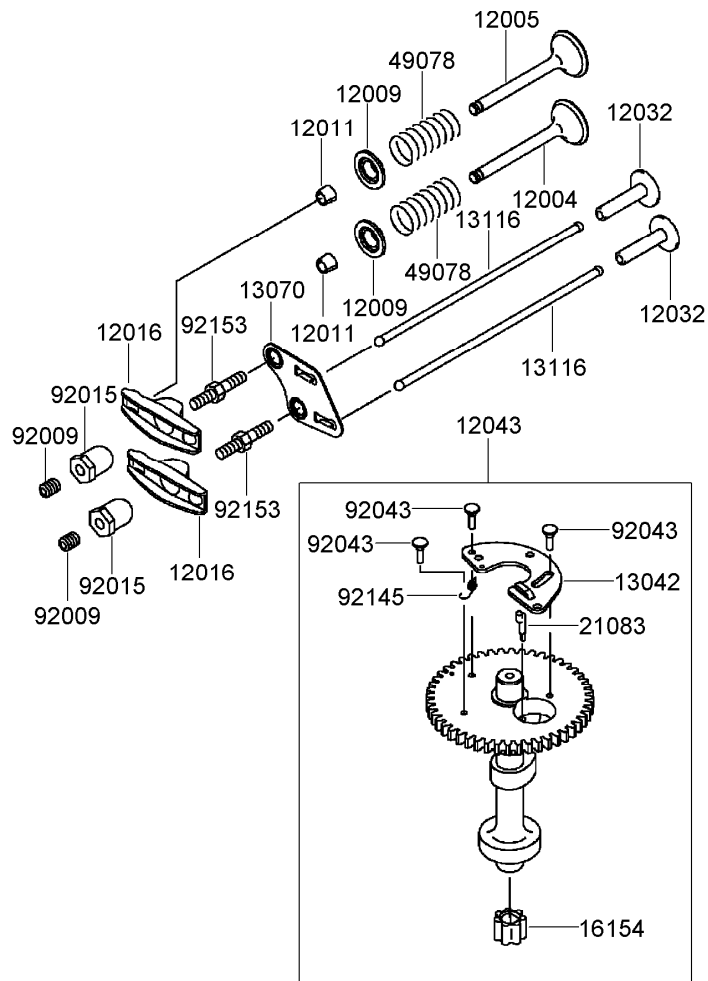
● Obtain parts from www.kawpowerepc.com



Piston and Crankshaft Assembly Kawasaki FJ180V-AS64

<i>Ref.</i>	<i>Part Number</i>	<i>Qty.</i>	<i>Description</i>
13001	13001-7022	1	Piston-Engine ●
13002	13002-7001	1	Pin-Piston ●
13008	13008-7002	1	Piston Ring Set ●
13025	13025-7006	1	Piston Ring Set (L 0.50) ●
13029	13029-7005	1	Piston-Engine (L 0.50) ●
13031	13031-7064	1	Crankshaft ●
13251	13251-7011	1	Connecting Rod ASM ●
92033	92033-7002	2	Ring-Snap ●
130	130G0630	2	Bolt-Flanged (6X30) ●

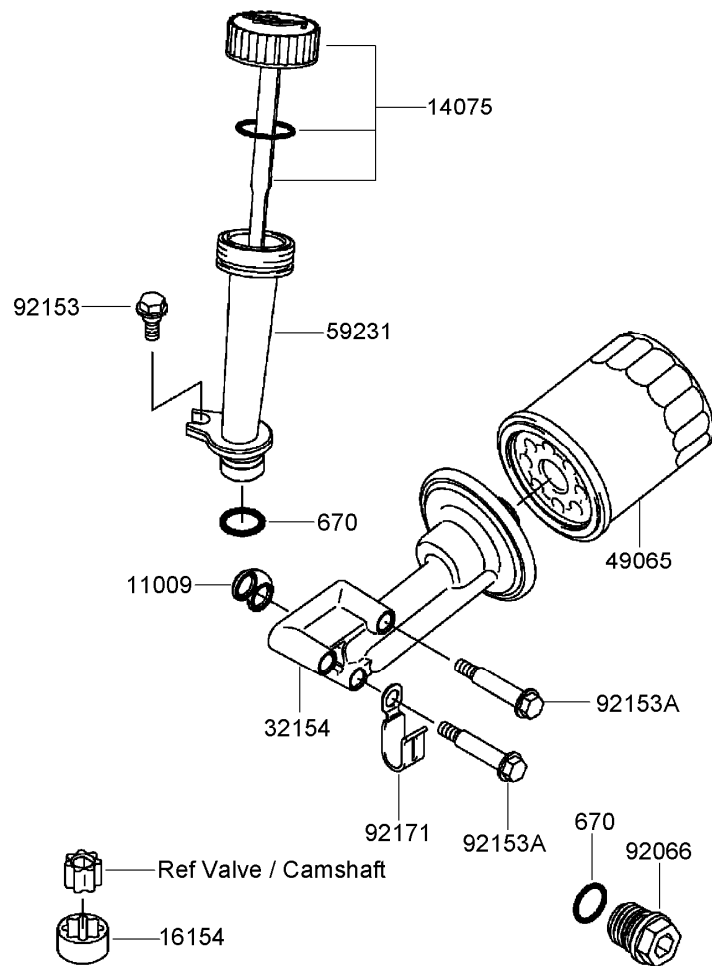
● Obtain parts from www.kawpowerepc.com



Valve and Camshaft Assembly Kawasaki FJ180V-AS64

<i>Ref.</i>	<i>Part Number</i>	<i>Qty.</i>	<i>Description</i>
12004	12004-7005	1	Valve-Intake ●
12005	12005-7006	1	Valve-Exhaust ●
12009	12009-7001	2	Retainer-Spring, Valve ●
12011	12011-2056	4	Collet ●
12016	12016-7008	2	Arm-Rocker ●
12032	12032-7001	2	Tappet ●
12043	12043-7005	1	Camshaft Valve ASM ●
13042	13042-7006	1	Weight ●
13070	13070-7009	1	Guide ●
13116	13116-7003	2	Rod-Push ●
16154	16154-7004	1	Rotor-Pump ●
21083	21083-7009	1	Arm ●
49078	49078-7001	2	Spring-Valve, Engine ●
92009	92009-2341	2	Screw ●
92015	92015-2253	2	Nut ●
92043	92043-7006	3	Pin ●
92145	92145-7016	1	Spring ●
92153	92153-7019	2	Bolt ●

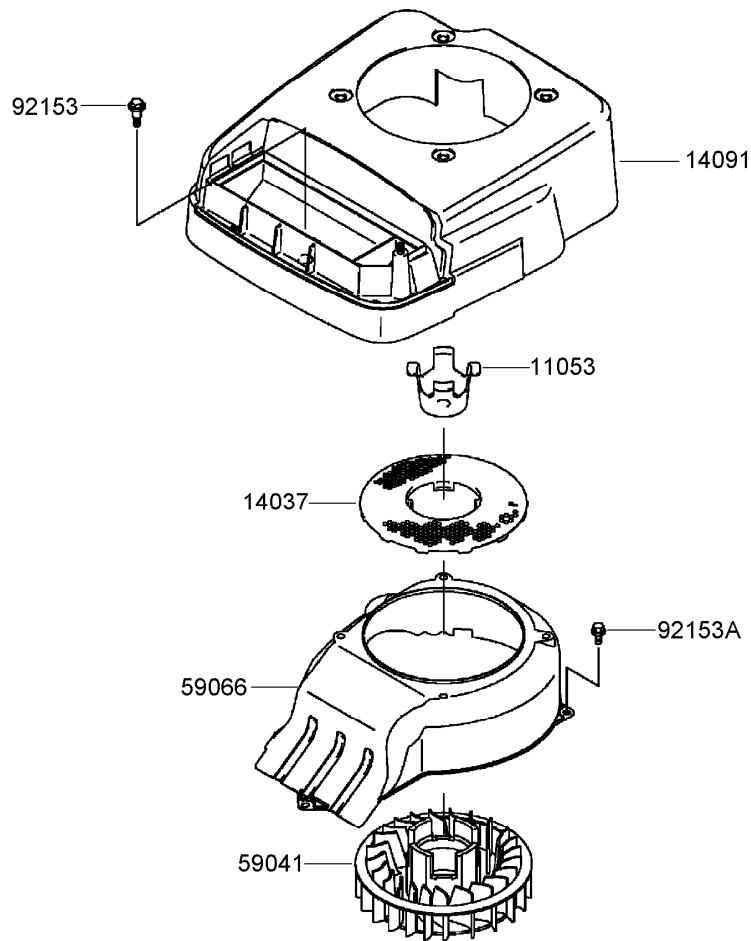
● Obtain parts from www.kawpowerepc.com



Lubrication Equipment Assembly Kawasaki FJ180V-AS64

<i>Ref.</i>	<i>Part Number</i>	<i>Qty.</i>	<i>Description</i>
11009	11009-2860	1	Gasket ●
14075	14075-7007	1	Cap ASM ●
16154	16154-7002	1	Rotor-Pump ●
32154	32154-7018	1	Pipe ●
49065	49065-2078	1	Filter-Oil ●
59231	59231-7004	1	Filler ●
92066	92066-7003	1	Plug ●
92153	92153-7007	1	Bolt ●
92153A	92153-7028	3	Bolt ●
92171	92171-7008	1	Clamp ●
670	670D2016	2	O-Ring (16Mm) ●

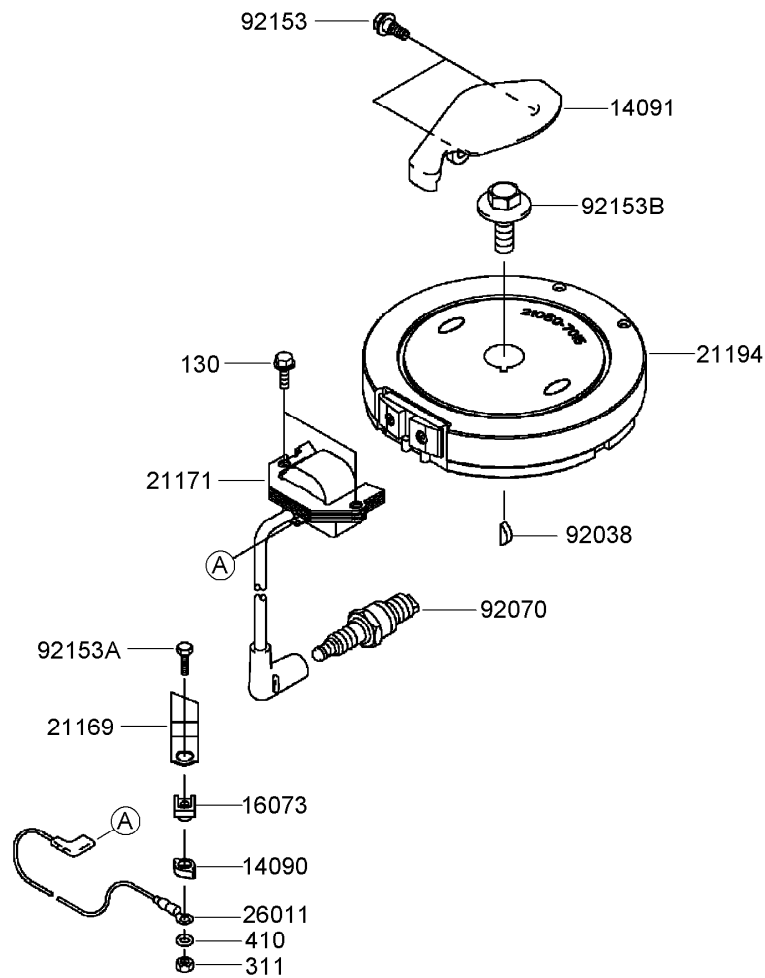
● Obtain parts from www.kawpowerepc.com



Cooling Equipment Assembly Kawasaki FJ180V-AS64

<i>Ref.</i>	<i>Part Number</i>	<i>Qty.</i>	<i>Description</i>
11053	11053-7009	1	Bracket-Fan ●
14037	14037-7017	1	Screen ●
14091	14091-7046	1	Cover ●
59041	59041-7009	1	Fan ●
59066	59066-7016	1	Housing-Fan ●
92153	92153-7008	1	Bolt ●
92153A	92153-7043	1	Bolt (6X12) ●

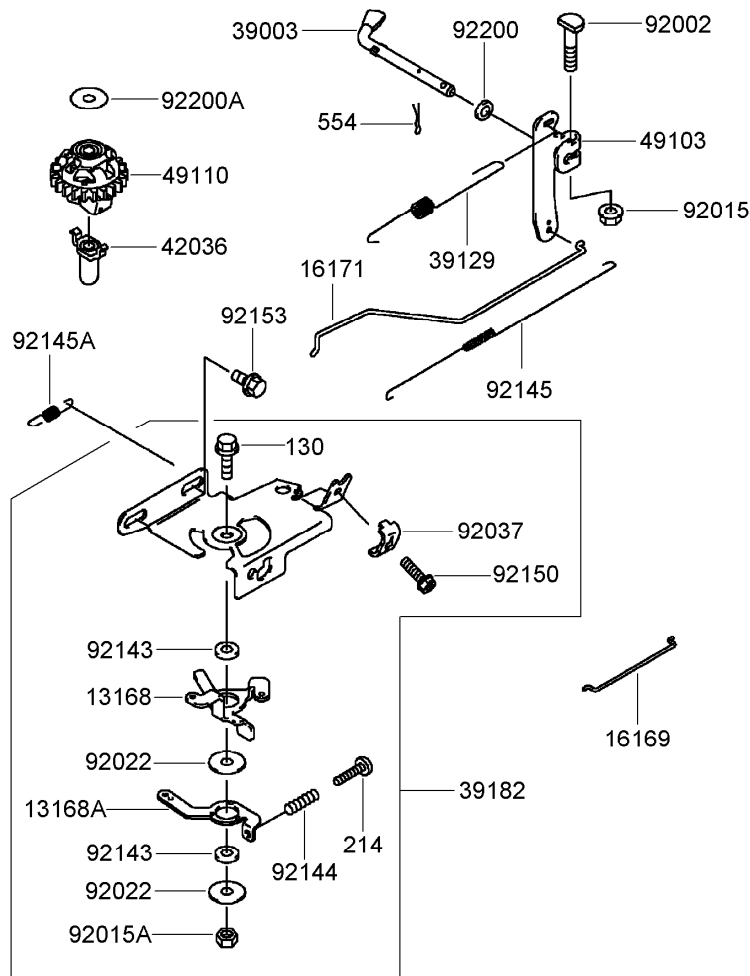
● Obtain parts from www.kawpowerepc.com



Electric Equipment Assembly Kawasaki FJ180V-AS64

<i>Ref.</i>	<i>Part Number</i>	<i>Qty.</i>	<i>Description</i>
14090	14090-2108	1	Cover ●
14091	14091-7036	1	Cover ●
16073	16073-2192	1	Insulator ●
21169	21169-2071	1	Terminal ●
21171	21171-7030	1	Ignition Coil ASM ●
21194	21194-7024	1	Flywheel ●
26011	26011-7013	1	Wire-Lead ●
92038	92038-2077	1	Key ●
92070	92070-2088	1	Spark Plug, B P R 5E S (N G K) Solid ●
92153	92153-7007	2	Bolt ●
92153A	92153-7012	1	Bolt (4X16) ●
92153B	92153-7030	1	Bolt (12X30) ●
130	130B0620	2	Bolt-Flanged (6X20) ●
311	311B0400	1	Nut-Hex (4Mm) ●
410	410B0400	1	Washer-Plain, S (4Mm) ●

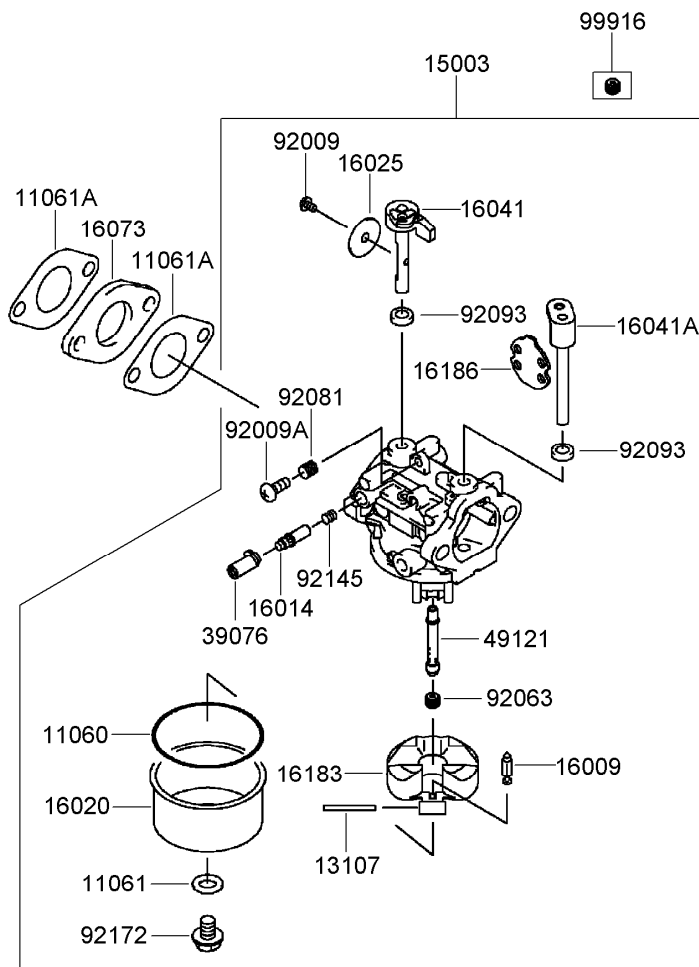
● Obtain parts from www.kawpowerepc.com



Control Equipment Assembly Kawasaki FJ180V-AS64

Ref.	Part Number	Qty.	Description	Ref.	Part Number	Qty.	Description
13168	13168-7020	1	Lever ●	92037	92037-2209	1	Clamp ●
13168A	13168-7022	1	Lever ●	92143	92143-2135	2	Collar (6X13X2.3) ●
16169	16169-7011	1	Link-Choke ●	92144	92144-2266	1	Spring ●
16171	16171-7015	1	Link-Throttle ●	92145	92145-7025	1	Spring-Throttle ●
39003	39003-7002	1	Arm-Pivot ●	92145A	92145-7032	1	Spring ●
39129	39129-7014	1	Spring-Governor ●	92150	92150-2182	1	Bolt (5X18) ●
39182	39182-7005	1	Control Panel ASM ●	92153	92153-7043	2	Bolt (6X12) ●
42036	42036-2051	1	Sleeve ●	92200	92200-2029	1	Washer (6.5X11.5X2.0) ●
49103	49103-7005	1	Arm-Governor ●	92200A	92200-2036	1	Washer (6.2X20X0.5) ●
49110	49110-7002	1	Governor ASM ●	130	130B0618	1	Bolt-Flanged ●
92002	92002-2269	1	Bolt (6X28) ●	214	214B0420	1	Screw-Pan +-(4X20) ●
92015	92015-1193	1	Nut ●	554	554A0600	1	Pin-Snap (1.2X21.2) ●
92015A	92015-2051	1	Nut ●				
92022	92022-2372	2	Washer (6X19X1.2) ●				

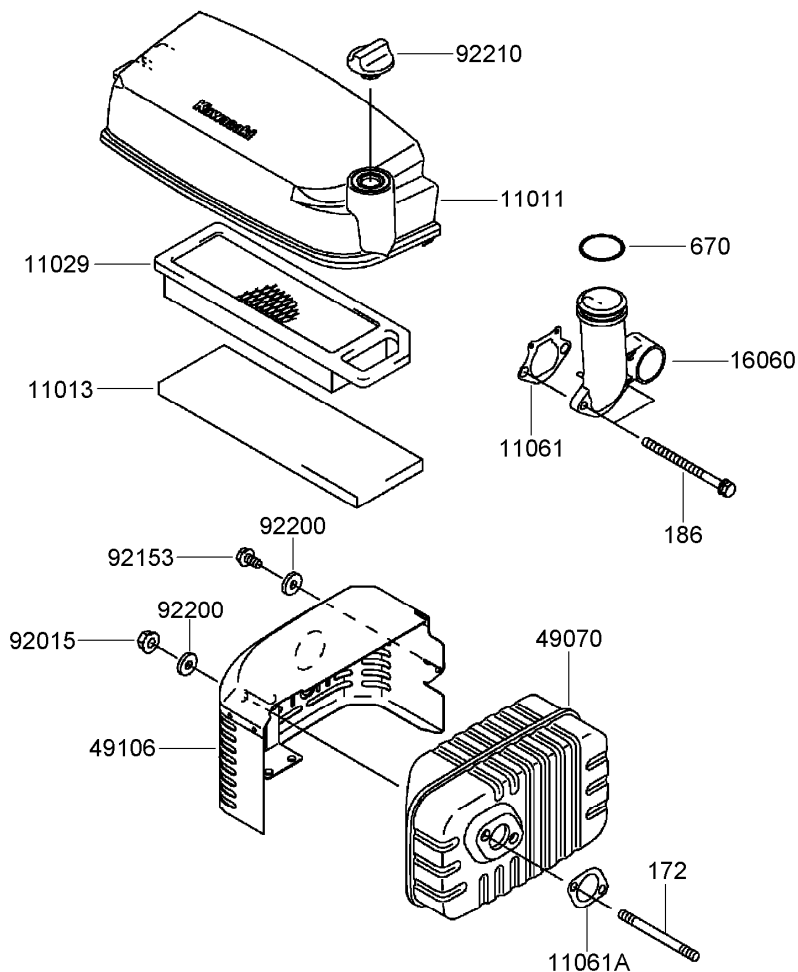
● Obtain parts from www.kawpowerepc.com



Carburetor Assembly Kawasaki FJ180V-AS64

Ref.	Part Number	Qty.	Description
11060	11060-2190	1	Gasket ●
11061	11061-7010	1	Gasket-Screw ●
11061A	11061-7015	2	Gasket-Insulator ●
13107	13107-7024	1	Shaft ●
15003	15003-7132	1	Carburetor ASM ●
16009	16009-2136	1	Needle-Jet ●
16014	16014-7008	1	Screw-Air, Pilot ●
16020	16020-7004	1	Chamber-Float ●
16025	16025-7007	1	Valve-Throttle ●
16041	16041-7019	1	Shaft-Carburetor ●
16041A	16041-7020	1	Shaft-Carburetor ●
16073	16073-7006	1	Insulator ●
16183	16183-2002	1	Float ASM ●
16186	16186-7003	1	Choke Valve ASM ●
39076	39076-7001	1	Limiter ●
49121	49121-7008	1	Nozzle-Main ●
92009	92009-2083	1	Screw ●
92009A	92009-2349	1	Screw ●
92063	92063-7049	1	Jet-Main, No. 74 (6560 Ft) ●
92081	92081-2234	1	Spring ●
92093	92093-2100	2	Seal ●
92145	92145-7015	1	Spring ●
92172	92172-7002	1	Screw ●
99916	99916-7007	1	Main Jet K H I Parts Kit ●

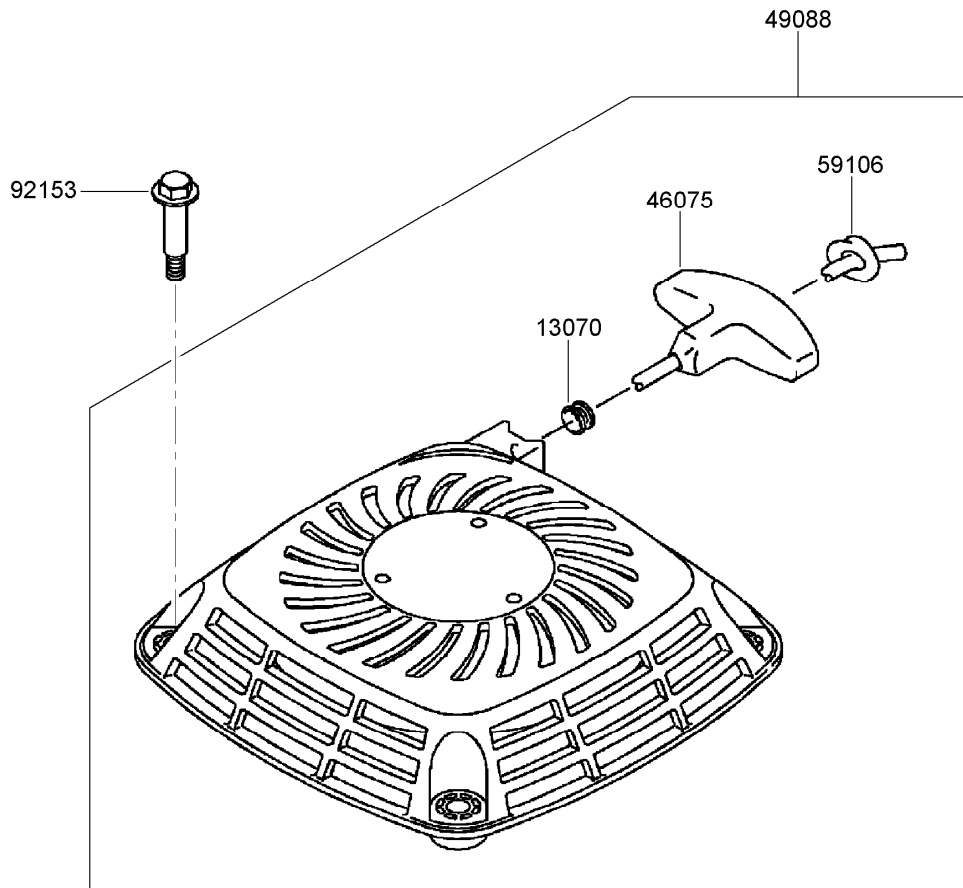
● Obtain parts from www.kawpowerepc.com



Air Filter and Muffler Assembly Kawasaki FJ180V-AS64

<i>Ref.</i>	<i>Part Number</i>	<i>Qty.</i>	<i>Description</i>
11011	11011-7028	1	Case-Filter, Air ●
11013	11013-7032	1	Element-Filter, Air ●
11029	11029-7021	1	Air Filter Element ASM ●
11061	11061-7012	1	Gasket-Pipe, Intake ●
11061A	11061-7029	1	Gasket-Muffler ●
16060	16060-7012	1	Pipe-Intake ●
49070	49070-7022	1	Muffler ●
49106	49106-7019	1	Cover-Muffler ●
92015	92015-1193	2	Nut ●
92153	92153-7022	1	Bolt (6X12) ●
92200	92200-7043	3	Washer (6.4X17X3) ●
92210	92210-7019	1	Nut ●
172	172G0680	2	Bolt-Stud (6X80) ●
186	186B0680	2	Bolt-Upset, Wp (6X80) ●
670	670B3032	1	O-Ring (32Mm) ●

● Obtain parts from www.kawpowerepc.com

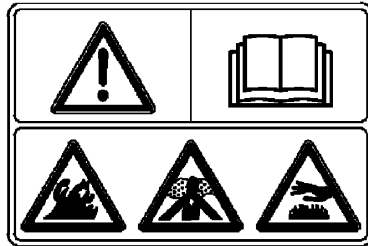


Starter Assembly Kawasaki FJ180V-AS64

<i>Ref.</i>	<i>Part Number</i>	<i>Qty.</i>	<i>Description</i>
13070	13070-7015	1	Guide ●
46075	46075-7002	1	Grip ●
49088	49088-7022	1	Starter-Recoil ●
59106	59106-7006	1	Rope (1500Mm) ●
92153	92153-7021	4	Bolt (M6) ●

● Obtain parts from www.kawpowerepc.com

56070



Label Assembly Kawasaki FJ180V-AS64

<i>Ref.</i>	<i>Part Number</i>	<i>Qty.</i>	<i>Description</i>
56070	56070-2021	1	Label-Warning ●

● Obtain parts from www.kawpowerepc.com

Attachments and Accessories

For 22200TE 66cm Heavy-Duty Rear Bagger Lawn Mower

Product Name	Model/Part
Mulch Kit.....	22201
Side-Discharge Kit.....	22202

Notes:



Count on it.