

135200

Illustrated Parts List

Model Series

135200

TYPE NUMBERS

0001 through 0026,
0027 through 0049,
0059 through 0075,
0079 through 0093,
0105 through 0128,
0129 through 0169,
0171 through 0200,
0202 through 0217,
0219 through 0238,
0240 through 0256,
0258 through 0269,
0271 through 0299,
0300 through 0327,
0603 through 0616,

TYPE NUMBERS

0620 through 0626,
0635 through 0660,
0670, 0671, 0679,
0700 through 0717,
0727 through 0740,
0747 through 0767,
0772 through 0791,
0814, 0815, 0913
1003 through 1050,
1060 through 1093,
1105 through 1197,
1200 through 1299,
1301 through 1333,
1336 through 1345.

TO FIND

THE CORRECT NUMBER OF THE PART YOU NEED: FOLLOW THE INSTRUCTIONS BELOW

- A. Refer to Engine Model, Type and Code Number that is stamped on the blower housing of engine. Engine type numbers such as 0123 01 are listed only as 0123 in most instances. The two digits (01 or 02, etc.) to the right of the space may be required for more accurate parts identification in some instances. Select the Illustrated Parts List covering the correct Model Series and Type Number.
- B. Refer to the Illustrations and compare the original part with Illustration. The number next to the illustration is the Reference Number. Assemblies include all parts shown in frames. All parts shown in assembly frames having individual reference numbers can be purchased separately.
- C. After the Reference Number has been identified, refer to the Numerical text, where Reference and Primary Part Number are listed. **THE PRIMARY PART IS USED ON ALL TYPE NUMBERS EXCEPT THOSE TYPE NUMBERS UNDER "NOTE."**
- D. If a "Note" appears below the Primary Part Number, it means that this part differs from the Primary Part for certain types. If your Type number is listed under "Note," order the part referred to at the "Note."
- E. If your Engine Type Number does not appear after any part number listed under "Note," use the Primary Part Number.
- F. For Engine Type Numbers not covered by this book, check other Parts Lists having the same engine model or contact your source of supply.

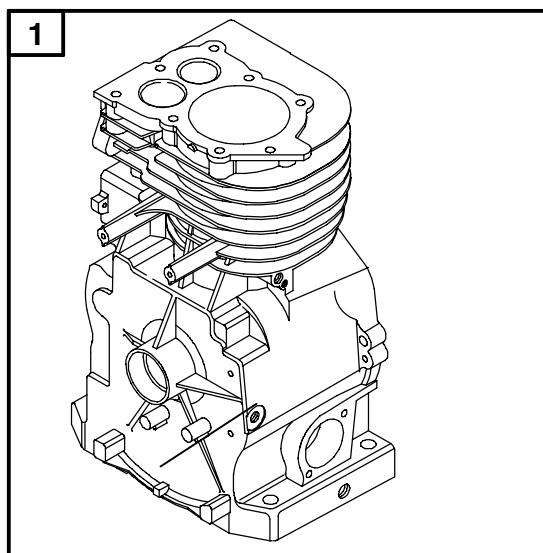
PRINTED IN U.S.A.

BRIGGS & STRATTON



COPYRIGHT by BRIGGS & STRATTON CORPORATION
All rights reserved. No part of this material may be reproduced or transmitted, in any form or by any means, electronic or mechanical, including photocopying, recording or by any information storage and retrieval system, without permission in writing from Briggs & Stratton Corporation.

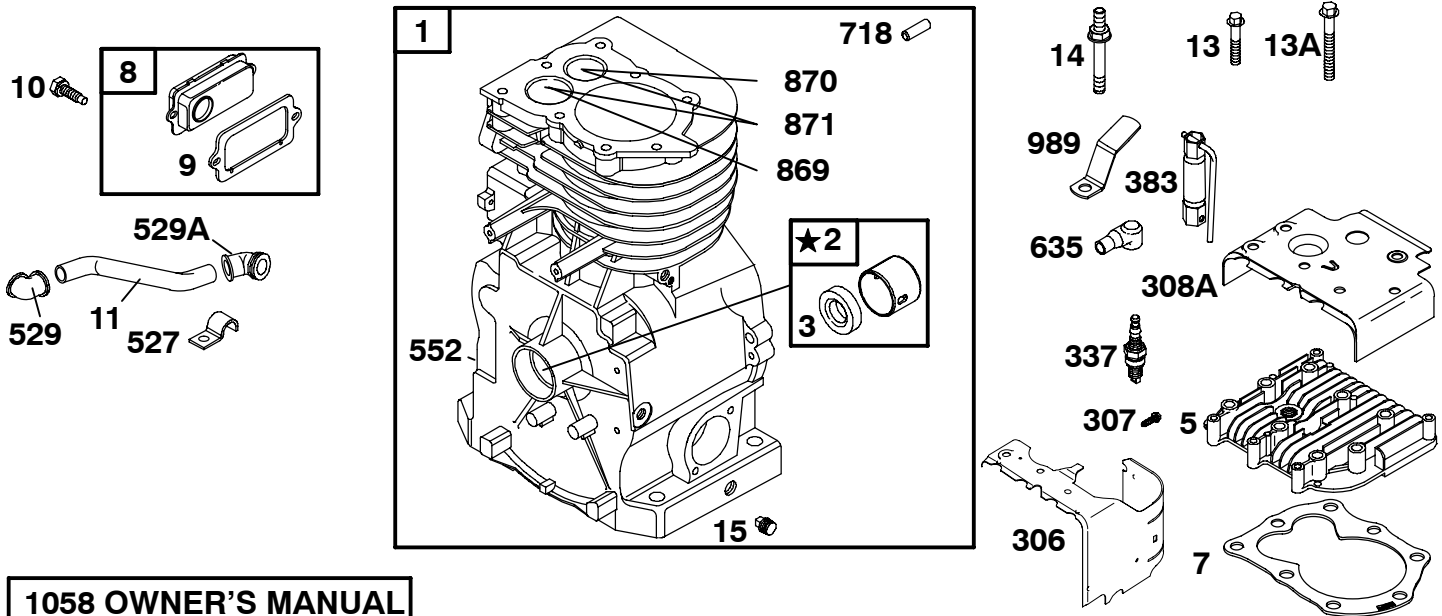
135200 to 135299



| REF. NO. | PART NO. | DESCRIPTION | REF. NO. | PART NO. | DESCRIPTION | REF. NO. | PART NO. | DESCRIPTION |
|-------------|-------------|--|-------------|-------------|--|-------------|-------------|--|
| 1 | 497144 | Cylinder Assembly ----- Note ----- 494955 Cylinder Assembly Used on Type No(s). 0011, 0013, 0022, 0025, 0026, 0059, 0072, 0075, 0080, 0082, 0083, 0084, 0093, 0115, 0121, | | | 0126, 0138, 0157, 0162, 0163, 0164, 0166, 0168, 0181, 0205, 0215, 0225, 0226, 0236, 0241, 0244, 0247, 0248, 0251, 0252, 0256, 0259, 0264, 0277, 0291, 0292, 0297, 0299, 0312, 0314, | | | 0327, 0611, 0625, 0626, 0752, 0757, 0762, 0791, 1011, 1012, 1025, 1026, 1072, 1075, 1080, 1084, 1093, 1115, 1157, 1215, 1252, 1291, 1292, 1312, 1314, 1327, 1328, 1333, 1337, 1340. |

- ★ Included in Engine Gasket Set-Ref. 358.
- Included in Carburetor Overhaul Kit-Ref. 121.

Ø Included in Valve Gasket Set-Ref. 1095.



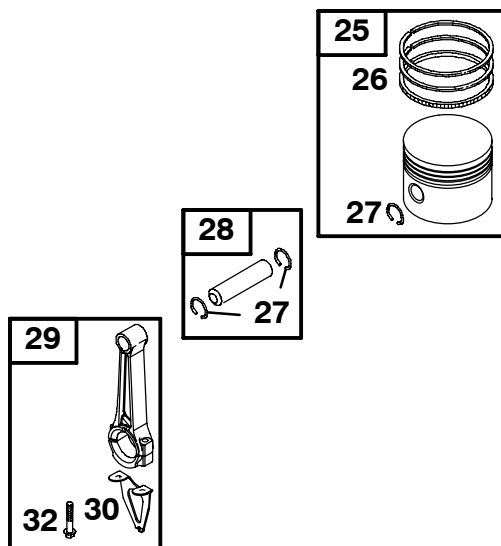
1058 OWNER'S MANUAL

| REF. NO. | PART NO. | DESCRIPTION | REF. NO. | PART NO. | DESCRIPTION | REF. NO. | PART NO. | DESCRIPTION |
|----------|----------|---|----------|----------|-------------------------------|----------|----------|---|
| 1 | | Cylinder Assembly (See previous page) | 13 | 691640 | Screw (Cylinder Head) | 869 | 691705 | Seat-Valve (Intake) |
| 2 | 399269 | Kit-Bushing/Seal (Magneto Side) (Used After Code Date 94012300). | 13A | 691659 | Screw (Cylinder Head) | 870 | 691701 | Seat-Valve (Exhaust) |
| | | ----- Note ----- | 14 | 691690 | Stud (Cylinder Head) | 871 | 262001 | Bushing-Valve Guide (Exhaust) |
| | | 297565 Kit-Bushing/ Seal (Magneto Side) (Used Before Code Date 94012400). | 15 | 691686 | Plug-Oil Drain (Standard) | | | ----- Note ----- |
| 3 | ★299819S | Seal-Oil (Magneto Side) | 306 | 694514 | Shield-Cylinder | | | 63709 Bushing-Valve Guide (Intake) |
| 5 | 691716 | Head-Cylinder | 307 | 691660 | Screw (Cylinder Shield) | 989 | 221828 | Stopswitch-Spark Plug Used on Type No(s). 1011, 1012. |
| 7★ | Ø272157S | Gasket-Cylinder Head | 308A | 690473 | Cover-Cylinder Head (Full) | 1058 | 274266 | Owner's Manual (Emission) |
| 8 | 699448 | Breather Assembly | 337 | 802592S | Plug-Spark | | | ----- Note ----- |
| 9 | ★Ø27549 | Gasket-Breather | 383 | 89838 | Wrench-Spark Plug | | | 276646 Owner's Manual (Non Emission) |
| 10 | 691666 | Screw (Breather Assembly) | 527 | 691741 | Clamp-Tube | | | |
| 11 | 231550 | Tube-Breather | 529 | 692189 | Grommet (90 Degree) | | | |
| | | ----- Note ----- | 529A | 692187 | Grommet (120 Degree) | | | |
| | | 230722 Tube-Breather Used on Type No(s). 0299. | 552 | 690508 | Bushing-Governor Crank | | | |
| | | 690517 Tube-Breather Used on Type No(s). 1011, 1012. | 635 | 66538 | Boot-Spark Plug | | | |
| | | | 718 | 690959 | Pin-Locating | | | |

★ Included in Engine Gasket Set-Ref. 358.
● Included in Carburetor Overhaul Kit-Ref. 121.

Ø Included in Valve Gasket Set-Ref. 1095.

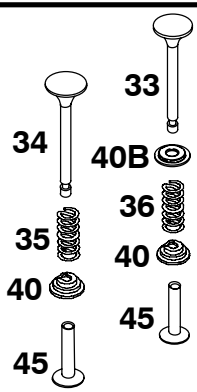
135200 to 135299



| REF. NO. | PART NO. | DESCRIPTION | REF. NO. | PART NO. | DESCRIPTION | REF. NO. | PART NO. | DESCRIPTION |
|----------|----------|--|----------|----------|--|----------|----------|---|
| 25 | 790908 | Piston Assembly (Standard) (Used After Code Date 99011100). ----- Note ----- 298904 Piston Assembly (Standard) (Used Before Code Date 99011200). 792532 Piston Assembly (.020" Oversize) (Used After Code Date 99011100). 298906 Piston Assembly (.020" Oversize) (Used Before Code Date 99011200). 298907 Piston Assembly (.030" Oversize) (Used Before Code Date 99011200). | 26 | 498680 | Ring Set (Standard) (Used After Code Date 99011100). ----- Note ----- 298982 Ring Set (Standard) (Used Before Code Date 99011200). 498682 Ring Set (.020" Oversize) (Used After Code Date 99011100). 298984 Ring Set (.020" Oversize) (Used Before Code Date 99011200). 498683 Ring Set (.030" Oversize) (Used After Code Date 99011100). | 27 | 691588 | Lock-Piston Pin |
| | | | | | | 28 | 298909 | Pin-Piston (Standard) ----- Note ----- 298908 Pin-Piston (.005" Oversize) |
| | | | | | | 29 | 299430 | Rod-Connecting |
| | | | | | | 30 | 691759 | Dipper-Connecting Rod |
| | | | | | | 32 | 691664 | Screw (Connecting Rod) |

- ★ Included in Engine Gasket Set-Ref. 358.
- Included in Carburetor Overhaul Kit-Ref. 121.

Ø Included in Valve Gasket Set-Ref. 1095.

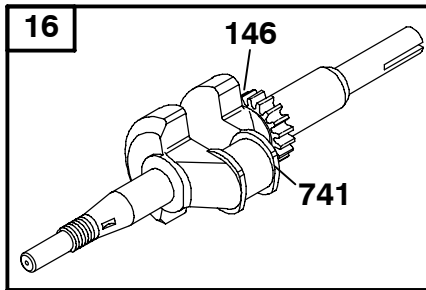


| REF. NO. | PART NO. | DESCRIPTION | REF. NO. | PART NO. | DESCRIPTION | REF. NO. | PART NO. | DESCRIPTION |
|----------|----------|---------------|----------|----------|------------------------|----------|----------|--------------------------|
| 33 | 211119S | Valve-Exhaust | 35 | 690520 | Spring-Valve (Intake) | 40 | 692194 | Retainer-Valve |
| 34 | 261044S | Valve-Intake | 36 | 692180 | Spring-Valve (Exhaust) | 40B | 691760 | Retainer-Valve (Exhaust) |
| | | | | | | 45 | 690509 | Tappet-Valve |

★ Included in Engine Gasket Set-Ref. 358.
● Included in Carburetor Overhaul Kit-Ref. 121.

Ø Included in Valve Gasket Set-Ref. 1095.

135200 to 135299

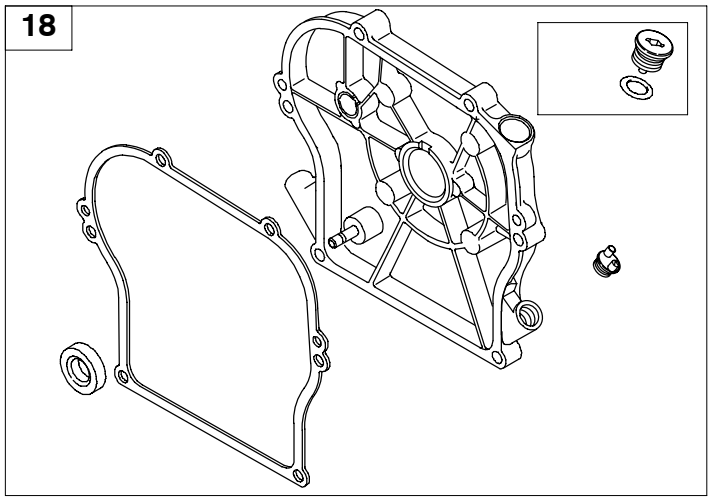


357
357A
17
24

| REF. NO. | PART NO. | DESCRIPTION | REF. NO. | PART NO. | DESCRIPTION | REF. NO. | PART NO. | DESCRIPTION |
|----------|----------|---|----------|----------|---|----------|----------|---|
| 16 | 492088 | Crankshaft (No Longer Available) | | | | | | 1167, 1171, 1190, 1197, 1289, 1330. |
| | | ----- Note ----- | | | 495644 Crankshaft Used on Type No(s). 0035, 0084, 0131, 0247, 0301, 0326, 0635, 1035, 1084, 1301, 1326, 1328, 1333. | | | 499764 Crankshaft Used on Type No(s). 0079, 0140, 0223, 0263, 0294, 0298, 0302, 0307, 0308, 0679, 0702, 0913, 1008, 1079, 1140, 1223, 1263, 1308, 1313. |
| | | 397095 Crankshaft Used on Type No(s). 0049, 0107, 0155, 0215, 0243, 0277, 0649, 1049, 1215. | | | 495645 Crankshaft Used on Type No(s). 0009, 0018, 0019, 0027, 0029, 0036, 0073, 0106, 0116, 0125, 0128, 0131, 0133, 0134, 0139, 0143, 0161, 0165, 0168, 0176, 0179, 0181, 0186, 0192, 0200, 0208, 0212, 0217, 0227, 0230, 0249, 0250, 0256, 0264, 0268, 0283, 0288, 0299, 0303, 0317, 0318, 0636, 0700, 0717, 0730, 0762, 0779, 0788, 1009, 1012, 1019, 1027, 1029, 1036, 1050, 1073, 1106, 1139, 1143, 1161, 1179, 1186, 1200, 1217, 1250, 1268, 1283, 1288, 1317, 1318. | | | 499765 Crankshaft Used on Type No(s). 0014, 0253. |
| | | 397103 Crankshaft Used on Type No(s). 0020, 0117, 0132, 0258, 0620, 0728, 0759, 1299, 1020, 1128, 1231, 1258, 1299. | | | 495642 Crankshaft Used on Type No(s). 0080, 0314. | | | 692142 Crankshaft Used on Type No(s). 0740, 0814, 1261. |
| | | 494035 Crankshaft Used on Type No(s). 0026, 0115, 0129, 0151, 0160, 0162, 0163, 0164, 0166, 0199, 0211, 0244, 0252, 0292, 0297, 0327, 0626, 0729, 0752, 1327, 1026, 1115, 1129, 1160, 1252, 1292, 1340. | | | 495643 Crankshaft Used on Type No(s). 0038, 0059, 0072, 0075, 0082, 0083, 0093, 0126, 0228, 0241, 0251, 0291, 0311, 0312, 0638, 0791, 1038, 1072, 1075, 1093, 1291, 1312. | | | 692140 Crankshaft Used on Type No(s). 1080, 1314. |
| | | | | | 495649 Crankshaft Used on Type No(s). 0003, 0007, 0060, 0144, 0146, 0148, 0152, 0167, 0171, 0177, 0178, 0183, 0188, 0189, 0190, 0191, 0196, 0197, 0213, 0240, 0255, 0272, 0273, 0289, 0300, 0305, 0603, 0607, 0660, 0767, 0790, 0815, 1003, 1007, 1060, 1146, | 17 | 692007 | Bearing-Ball |
| | | | | | | 24 | 222698S | Key-Flywheel |
| | | | | | | 146 | 690979 | Key-Timing (Used with Timing Gear 691847) |
| | | | | | | | | ----- Note ----- |
| | | | | | | | | 499047 Key-Timing (Used with Timing Gear 261696) |
| | | | | | | 357 | 692191 | Key-Drive Pulley |
| | | | | | | 357A | 690339 | Key-Drive Pulley (Woodruff) |
| | | | | | | 741 | 691847 | Gear-Timing (Uses Woodruff Key) |
| | | | | | | | | ----- Note ----- |
| | | | | | | | | 261696 Gear-Timing (Uses Locating Pin) |

★ Included in Engine Gasket Set-Ref. 358.
● Included in Carburetor Overhaul Kit-Ref. 121.

Ø Included in Valve Gasket Set-Ref. 1095.

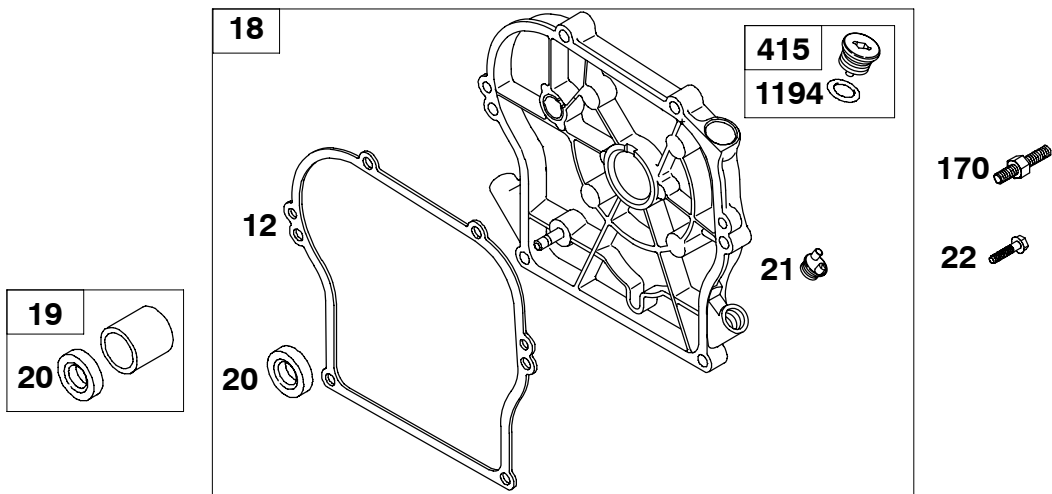


| REF. NO. | PART NO. | DESCRIPTION | REF. NO. | PART NO. | DESCRIPTION | REF. NO. | PART NO. | DESCRIPTION |
|-------------|-------------|--|-------------|-------------|--|-------------|-------------|---------------------------------------|
| 18 | 694377 | Cover-Crankcase (Gear Reduction) ----- Note ----- 694375 Cover- Crankcase (Auxillary PTO) | | 694350 | Cover- Crankcase (Plain Bearing) | | 694319 | Cover- Crankcase (Ball Bearing) |

★ Included in Engine Gasket Set-Ref. 358.
● Included in Carburetor Overhaul Kit-Ref. 121.

Ø Included in Valve Gasket Set-Ref. 1095.

135200 to 135299



| REF. NO. | PART NO. | DESCRIPTION | REF. NO. | PART NO. | DESCRIPTION | REF. NO. | PART NO. | DESCRIPTION |
|-------------|-------------|--|-------------|-------------|--|-------------|-------------|---|
| 12 | ★692213 | Gasket-Crankcase (Standard) ----- Note ----- ★270125 Gasket- Crankcase (.005" Thick) ★270126 Gasket- Crankcase (.009" Thick) | | | 0293, 0295, 0304, 0306, 0309, 0310, 0315, 0316, 0320, 0324, 0603, 0611, 0615, 0616, 0620, 0625, 0670, 0671, 0704, 0706, 0727, 0728, 0757, 0758, 0759, 0780, 0784, | | | 0232, 0236, 0254, 0260, 0265, 0269, 0295, 0309, 0310, 0320, 0324, 0611, 0670, 0671, 0728, 0757, 0758, 0780, 1011, 1070, 1071, 1128, 1154, 1157, 1158, 1169, 1173, 1180, 1194, 1232, |
| 18 | | Cover-Crankcase (See Previous Page) | | | 1003, 1004, 1005, 1011, 1016, 1020, | | | 1260, 1261, 1265, 1309, 1310, 1320, 1324, 1336, 1337, 1338, 1343. |
| 19 | 495660 | Kit-Bushing/Seal (PTO Side) | | | 1025, 1070, 1071, 1105, 1119, 1127, | | | 692019 Seal-Oil (PTO Side) Used on Type No(s). 0026, 0115, 0129, 0151, 0160, 0162, 0163, 0164, 0166, 0199, 0211, 0244, 0252, 0292, 0327, 0626, 0752, 1026, 1115, 1129, 1160, 1252, 1292, 1327. |
| 20 | ★495307 | Seal-Oil (PTO Side) ----- Note ----- 294606 Seal-Oil (PTO Side) Used on Type No(s). 0001, 0003, 0004, 0005, 0015, 0016, 0020, 0025, 0105, 0114, 0117, 0118, 0119, 0127, 0132, 0136, 0142, 0145, 0150, 0153, 0156, 0157, 0159, 0171, 0175, 0178, 0182, 0183, 0185, 0193, 0194, 0195, 0209, 0210, 0214, 0222, 0237, 0238, 0245, 0253, 0254, 0258, 0260, 0262, 0263, 0265, 0269, 0271, 0274, 0276, 0281, 0284, 0285, 0289, | | | 1128, 1142, 1153, 1154, 1157, 1158, 1159, 1169, 1171, 1180, 1194, 1231, 1232, 1238, 1245, 1258, 1259, 1260, 1261, 1263, 1271, 1276, 1281, 1284, 1289, 1299, 1304, 1310, 1315, 1320, 1324, 1329, 1336, 1337, 1338. 691952 Seal-Oil (PTO Side) Used on Type No(s). 0011, 0070, 0071, 0108, 0120, 0121, 0124, 0141, 0154, 0157, 0158, 0169, 0173, 0174, 0180, 0182, 0194, 0198, 0202, 0203, 0204, 0205, 0206, 0207, 0209, 0214, 0216, | | | 21 281658S Cap-Oil Fill 22 691551 Screw (Crankcase Cover) 170 691120 Stud (Crankcase Cover, Install In #1 and/or #2 Positions) 415 691363 Plug (Crankcase Cover) 1194 ★691876 Seal-O Ring (Plug) |

Ø Included in Valve Gasket Set—Ref. 1095.

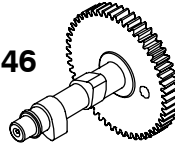
219



220



46



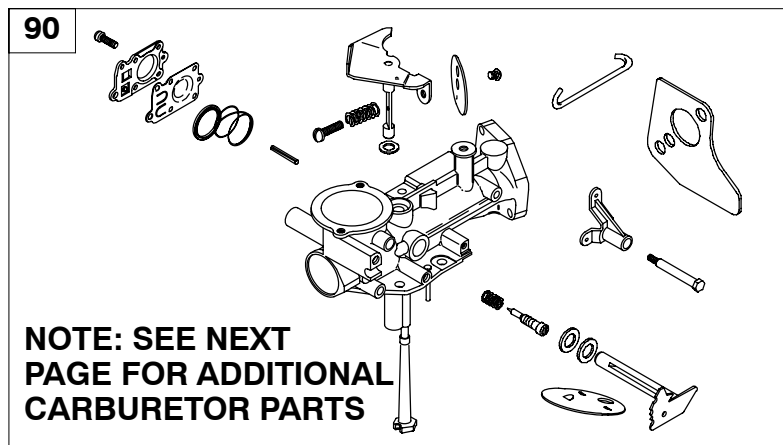
| REF. NO. | PART NO. | DESCRIPTION | REF. NO. | PART NO. | DESCRIPTION | REF. NO. | PART NO. | DESCRIPTION |
|----------|----------|---|----------|----------|---|----------|----------|--|
| 46 | 691164 | Camshaft (Used After Code Date 96112400). ----- Note ----- 691166 Camshaft (Used After Code Date 96112400). Used on Type No(s). 0173, 0214, 0309, 0611, 0670, 0671, 0728, 0757, 0758, 0780, 1011, 1070, 1071, 1128, 1154, 1157, 1158, 1169, 1180, 1194, 1232, 1261, 1265, 1309, 1310, 1320, 1324, 1336, 1337, 1338, 1343. | | 691166 | Camshaft (Used Before Code Date 96112500). Used on Type No(s). 0070, 0071, 0108, 0120, 0121, 0124, 0141, 0154, 0157, 0158, 0169, 0174, 0180, 0182, 0194, 0198, 0202, 0203, 0204, 0205, 0206, 0207, 0209, 0216, 0232, 0236, 0254, 0260, 0265, 0269, 0295, 0309, 0310, 0320, 0322, 0324, 0611, 0670, 0671, 0757, 0758, 0780. 692526 Camshaft (Used Before Code Date 96112500). Used on Type No(s). 0173, 0214. | 219 | 494845 | Gear-Governor ----- Note ----- 391737 Gear-Governor (Used Before Code Date 91061000). |
| | | | | | | 220 | 691724 | Washer (Governor Gear) |

- ★ Included in Engine Gasket Set-Ref. 358.
- Included in Carburetor Overhaul Kit-Ref. 121.

Ø Included in Valve Gasket Set-Ref. 1095.

135200 to 135299

147

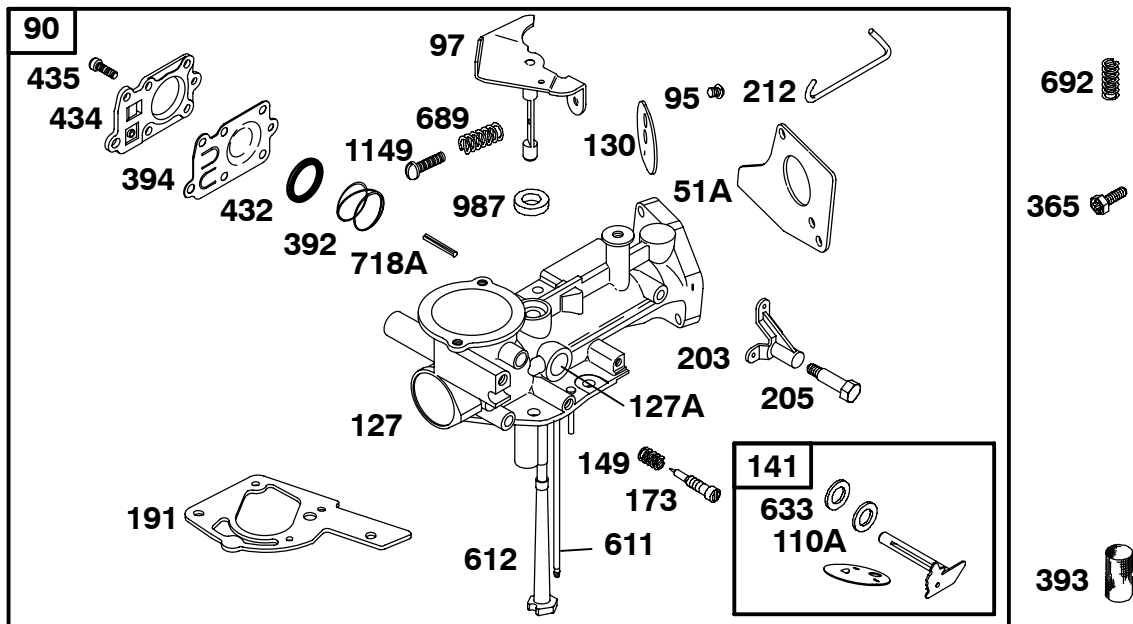


**NOTE: SEE NEXT
PAGE FOR ADDITIONAL
CARBURETOR PARTS**

| REF. NO. | PART NO. | DESCRIPTION | REF. NO. | PART NO. | DESCRIPTION | REF. NO. | PART NO. | DESCRIPTION |
|-------------|-------------|--|-------------|-------------|---|-------------|-------------|---|
| 90 | 498298 | Carburetor ----- Note ----- 495951 Carburetor Used on Type No(s). 0185, 0263. 495425 Carburetor Used on Type No(s). 0214. 498298 Carburetor Used on Type No(s). 0309, 0603, 0607, 0611, 0615, 0616, 0620, 0623, 0625, 0626, 0635, 0636, 0638, 0649, 0660, 0670, 0671, 0679, 0700, 0702, 0704, 0717, 0706, 0727, 0728, 0729, 0730, 0740, 0747, 0752, 0757, 0758, 0759, 0762, 0767, 0772, 0779, 0780, 0784, 0788, 0790, 0814, 0815, 0913, 1003, 1004, 1005, 1007, 1008, 1009, 1011, 1019, 1020, 1023, 1025, 1027, 1029, 1035, 1036, 1049, 1050, 1060, 1070, 1071, 1073, 1079, 1080, 1084, 1105, 1106, 1119, 1127, 1128, 1129, 1139, 1140, 1142, 1143, 1146, 1147, 1153, 1154, 1157, 1158, | | | 1159, 1161, 1167, 1169, 1171, 1173, 1179, 1180, 1190, 1194, 1196, 1197, 1200, 1215, 1216, 1217, 1219, 1223, 1231, 1232, 1238, 1242, 1245, 1246, 1250, 1258, 1259, 1261, 1268, 1271, 1276, 1281, 1283, 1284, 1288, 1289, 1289, 1299, 1301, 1304, 1308, 1310, 1313, 1314, 1315, 1317, 1318, 1320, 1324, 1326, 1328, 1329, 1330, 1333, 1336, 1337, 1338, 1340, 1342, 1343, 1345. | | | 0788, 0790, 0814, 0815, 0913, 1003, 1004, 1005, 1007, 1008, 1009, 1011, 1019, 1020, 1023, 1025, 1027, 1029, 1035, 1036, 1049, 1050, 1060, 1070, 1071, 1073, 1079, 1080, 1084, 1105, 1106, 1119, 1127, 1128, 1129, 1139, 1140, 1142, 1143, 1146, 1147, 1153, 1154, 1157, 1158, 1159, 1161, 1167, 1169, 1171, 1173, 1179, 1180, 1190, 1194, 1196, 1197, 1200, 1215, 1216, 1217, 1219, 1223, 1231, 1232, 1238, 1242, 1245, 1246, 1250, 1258, 1259, 1261, 1268, 1271, 1276, 1281, 1283, 1284, 1288, 1289, 1289, 1299, 1301, 1304, 1308, 1313, 1314, 1315, 1317, 1318, 1320, 1324, 1326, 1328, 1329, 1330, 1333, 1336, 1337, 1338, 1340, 1342, 1343. 692725 Jet-Pilot (High Altitude) |
| | | | 147 | 691250 | Jet-Pilot (Standard) Used on Type No(s). 0309, 0603, 0607, 0611, 0615, 0616, 0620, 0623, 0625, 0626, 0635, 0636, 0638, 0649, 0660, 0670, 0671, 0679, 0700, 0702, 0704, 0717, 0706, 0727, 0728, 0729, 0730, 0740, 0747, 0752, 0757, 0758, 0759, 0762, 0767, 0772, 0779, 0780, 0784, | | | |

- ★ Included in Engine Gasket Set-Ref. 358.
- Included in Carburetor Overhaul Kit-Ref. 121.

Ø Included in Valve Gasket Set-Ref. 1095.

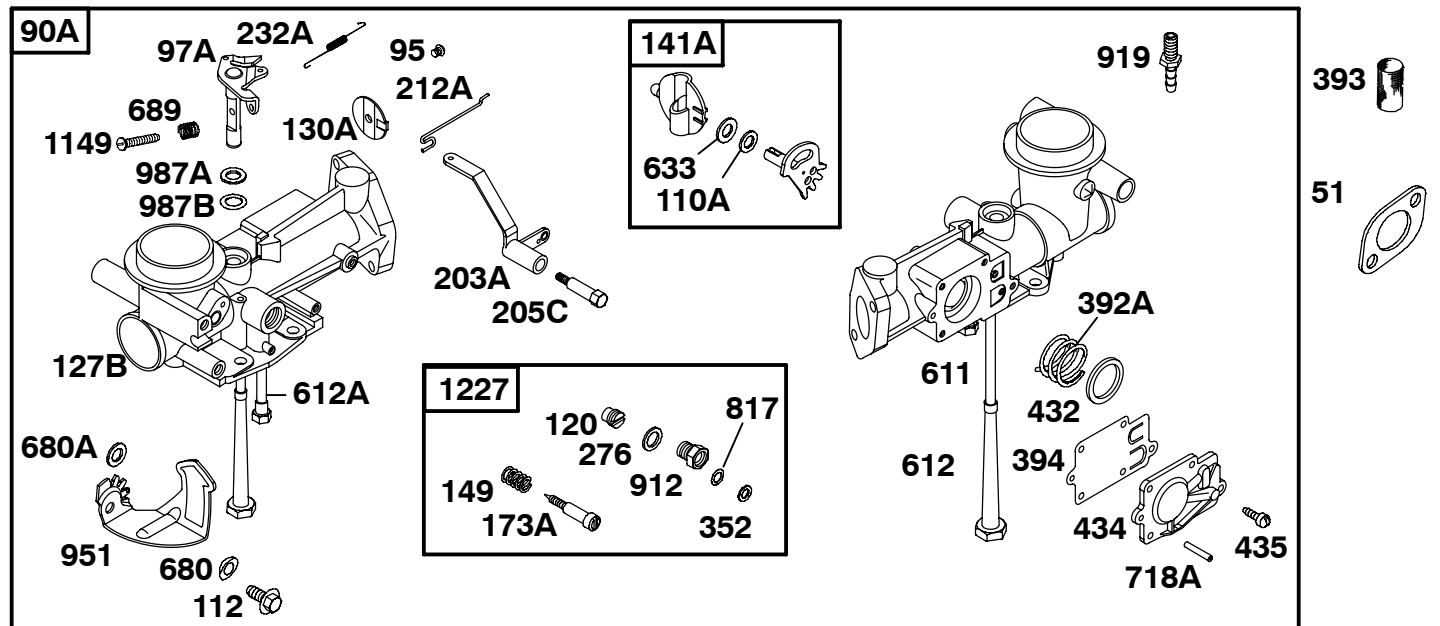


| REF. NO. | PART NO. | DESCRIPTION | REF. NO. | PART NO. | DESCRIPTION | REF. NO. | PART NO. | DESCRIPTION |
|----------|----------|--|----------|----------|---|----------|----------|--|
| 51A★ | 273113 | Gasket-Intake Carburetor (See Previous Page) | 191 | ★692241 | Gasket-Fuel Tank | 633 | 691869 | Seal-Choke/Throttle Shaft (Choke Shaft) (Felt) |
| 90 | | | 203 | 691906 | Crank-Bell (Standard, Nylon) | | | |
| 95 | 691437 | Screw (Throttle Valve) | 205 | 691776 | Screw (Bell Crank) | 689 | 691783 | Spring-Friction (Idle Screw) |
| 97 | 692325 | Shaft-Throttle | 212 | 691812 | Link-Throttle | 692 | 690572 | Spring-Detent (Used On Part 498298 Carburetor) |
| 110A | 690401 | Washer (Choke Shaft) (Brass) | 365 | 690953 | Screw (Carburetor) | 718A | 690296 | Pin-Locating (Pump Cover) |
| 127 | 691718 | Plug-Welch | 392 | 691823 | Spring-Pump Diaphragm | 987 | 695273 | Seal-Throttle Shaft (Foam) |
| 127A | 691742 | Plug-Welch | 393 | 691213 | Screen-Carburetor | 1149 | 691624 | Screw (Throttle Shaft) (Idle Speed Adjusting Only) |
| 130 | 691743 | Valve-Throttle | 394 | ●272538 | Diaphragm-Carburetor | | | |
| 141 | 497230 | Kit-Choke Shaft (Used After Code Date 94083100). | 432 | 690766 | Cap-Spring | | | |
| | | ----- Note ----- | 434 | 691713 | Cover-Diaphragm | | | |
| | | 491177 Kit-Choke Shaft (Used Before Code Date 94090100). | 435 | 691619 | Screw (Diaphragm Cover) | | | |
| 149 | ●691592 | Spring-Needle Valve | 611 | 691770 | Pipe-Fuel | | | |
| 173 | ●691777 | Valve-Idle Mixture (Idle) | 612 | 391813 | Tube-Pick Up (Uses Clip Spring) | | | |
| | | | | | ----- Note ----- | | | |
| | | | | | 297219 Tube-Pick Up (Uses Spiral Pin) Used on Type No(s). 0214. | | | |

★ Included in Engine Gasket Set-Ref. 358.
● Included in Carburetor Overhaul Kit-Ref. 121.

Ø Included in Valve Gasket Set-Ref. 1095.

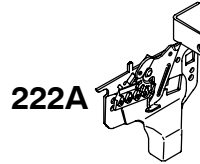
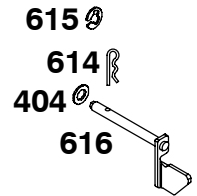
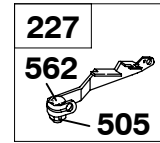
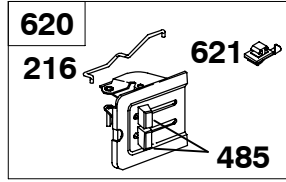
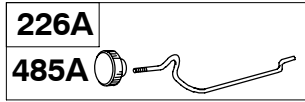
135200 to 135299



| REF. NO. | PART NO. | DESCRIPTION | REF. NO. | PART NO. | DESCRIPTION | REF. NO. | PART NO. | DESCRIPTION |
|----------|----------|---|----------|----------|---|----------|----------|---|
| 51 | ★27355 | Gasket-Intake Used on Type No(s). 0299, 1101, 1012, 1309. | 205C | 691630 | Screw (Bell Crank) | 680 | 691089 | Washer (Choke Lever) (Spring) |
| 90A | 397135 | Carburetor Used on Type No(s). 1011, 1012. ----- Note ----- 299437 Carburetor Used on Type No(s). 0299. 498298 Carburetor Used on Type No(s). 1309. | 212A | 691786 | Link-Throttle Used on Type No(s). 0299, 1101, 1012, 1309. | 680A | 691607 | Washer (Choke Lever) (Flat) |
| 95 | 691437 | Screw (Throttle Valve) | 232A | 690498 | Spring-Governor Link Used on Type No(s). 0299, 1101, 1012, 1309. | 689 | 691783 | Spring-Friction (6 Coil, Closed Ends, Idle Screw) |
| 97A | 691946 | Shaft-Throttle Used on Type No(s). 0299, 1101, 1012, 1309. | 276 | ●691608 | Washer-Sealing | 718A | 690296 | Pin-Locating (Pump Cover) |
| 110A | 690401 | Washer (Choke Shaft) (Brass) | 352 | ●690257 | Washer (High Speed Valve) | 817 | ●691606 | Seal-O Ring (High Speed Valve) |
| 112 | 691091 | Screw (Choke Lever) | 392A | 692206 | Spring-Pump Diaphragm Used on Type No(s). 0299, 1101, 1012, 1309. | 912 | ●690504 | Nut-Needle Valve |
| 120 | ●692134 | Seat-Needle Valve | 393 | 691213 | Screen-Carburetor | 919 | 692783 | Connector-Vacuum Tube |
| 127B | 691585 | Plug-Welch | 394 | ●272538 | Diaphragm-Carburetor (Pump) | 951 | 691180 | Lever-Choke |
| 130A | 211203 | Valve-Throttle | 432 | 690766 | Cap-Spring | 987A | 692279 | Seal-Throttle Shaft (Felt) ----- Note ----- 270167 Seal-Throttle Shaft (Felt) Used on Type No(s). 0299. |
| 141A | 397134 | Kit-Choke Shaft | 434 | 691713 | Cover-Diaphragm | 987B | 692001 | Seal-Throttle Shaft (Lip Seal) |
| 149 | ●691592 | Spring-Needle Valve | 435 | 691619 | Screw (Diaphragm Cover) | 1149 | 691624 | Screw (Throttle Shaft) (Idle Speed Adjusting Only) |
| 173A | ●690266 | Valve-Idle Mixture (Main) | 611 | 691770 | Pipe-Fuel | 1227 | ●299060 | Valve-High Speed |
| 203A | 691965 | Crank-Bell (Steel, Long) | 612 | 391813 | Tube-Pick Up (Uses Clip Spring) | | | |
| | | | 612A | 497413 | Tube-Pick Up (Uses Spiral Pin) | | | |
| | | | 633 | 691869 | Seal-Choke/Throttle Shaft (Choke Shaft) (Felt) | | | |

★ Included in Engine Gasket Set-Ref. 358.
● Included in Carburetor Overhaul Kit-Ref. 121.

Ø Included in Valve Gasket Set-Ref. 1095.

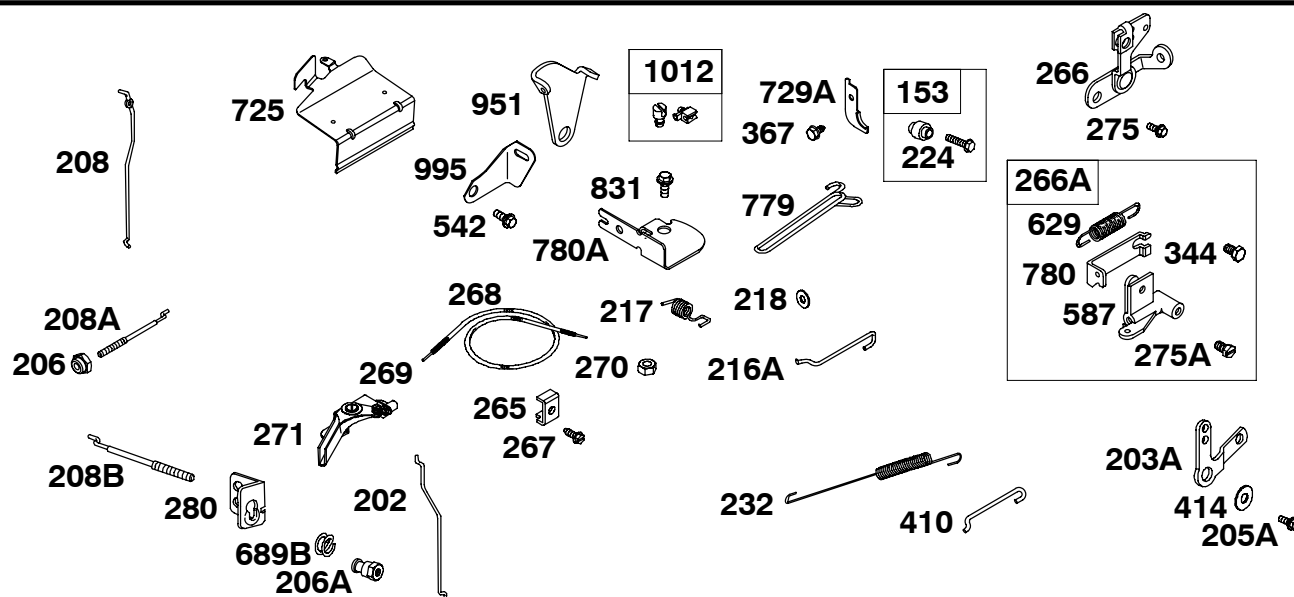


| REF. NO. | PART NO. | DESCRIPTION | REF. NO. | PART NO. | DESCRIPTION | REF. NO. | PART NO. | DESCRIPTION |
|----------|----------|--|----------|----------|---------------------------------------|----------|----------|--|
| 216 | 691824 | Link-Choke (Manual) | 404 | 691691 | Washer (Governor Crank) | 614 | 691620 | Pin-Cotter |
| 222A | 690816 | Bracket-Control (Gear and Rack) Used on Type No(s). 0214. | 485 | 692295 | Knob-Control (Slide) | 615 | 93307 | Retainer-E Ring |
| 226A | 399109 | Rod-Hand Choke (Rod Assembly) | 485A | 391908 | Knob-Control | 616 | 692016 | Crank-Governor |
| 227 | 690653 | Lever-Governor Control | 505 | 691251 | Nut (Governor Control Lever) | 620 | 490649 | Bracket-Control (Panel) |
| | | ----- Note ----- | 562 | 691119 | Bolt (Governor Control Lever) (Round) | 621 | 692310 | Switch-Stop |
| | | 692357 Lever-Governor Control Used on Type No(s). 0299, 1011, 1012. | | | | 688 | 690395 | Cap-Friction |
| 367 | 94025 | Screw (Wire Clip) | | | | 689A | 690529 | Spring-Friction (Conical Spring, Hand Choke Control) |
| | | | | | | 729A | 93784 | Clip-Wire (Clamp, Steel) |
| | | | | | | 1197 | 92484 | Screw (Hand Choke Rod) |

★ Included in Engine Gasket Set-Ref. 358.
● Included in Carburetor Overhaul Kit-Ref. 121.

Ø Included in Valve Gasket Set-Ref. 1095.

135200 to 135299

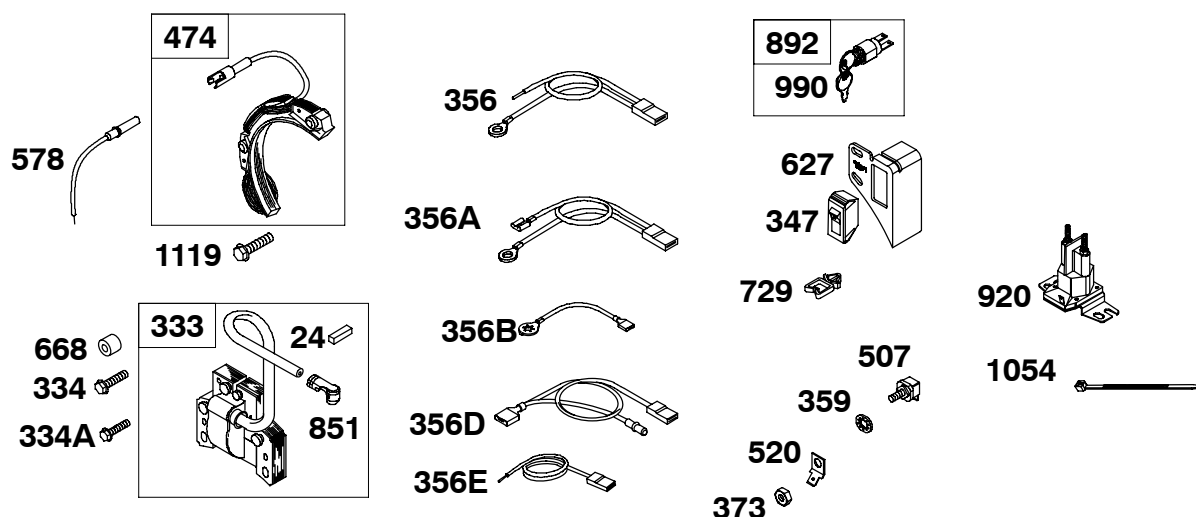


| REF. NO. | PART NO. | DESCRIPTION | REF. NO. | PART NO. | DESCRIPTION | REF. NO. | PART NO. | DESCRIPTION |
|----------|----------|---|----------|----------|--|----------|----------|--|
| 153 | 490589 | Kit-Collar/Screw | 218 | 691722 | Washer (Choke Link) | | | (Cable Clamp) |
| 202 | 691814 | Link-Mechanical Governor | 224 | 690320 | Screw (Collar/Screw Kit) | 367 | 691660 | Screw (Wire Clip) |
| | | -----Note----- | 232 | 691819 | Spring-Governor Link | 410 | 691274 | Link-Control |
| | | 261558 Link-Mechanical Governor | 265 | 691024 | Clamp-Casing | 414 | 691721 | Washer (Bell Crank) |
| | | Used on Type No(s). 0299, 1011, 1012. | 266 | 691414 | Control-Throttle (Remote/Governor Idle) | 542 | 691683 | Screw (Link Bracket) |
| 203A | 691744 | Crank-Bell (Steel) | 266A | 692316 | Control-Throttle (Kit with Spring) | 587 | 690769 | Clamp-Cable |
| 205A | 690320 | Screw (Bell Crank) | 267 | 690804 | Screw (Casing Clamp) | 629 | 690457 | Spring-Throttle Return |
| 206 | 690325 | Nut-Governor Adjusting (Governor Idle) | 268 | 691025 | Casing-Control Wire (Cut To Required Length) | 689B | 692522 | Spring-Friction (4 Coil, Closed Ends) |
| 206A | 691771 | Nut-Governor Adjusting (Fixed Speed) | 269 | 691026 | Wire-Control (Cut To Required Length) | 725 | 690440 | Shield-Heat (Fuel Tank) |
| 208 | 691813 | Rod-Governor Control (Non Threaded) | 270 | 691027 | Nut (Control Wire Casing) | 729A | 690471 | Clip-Wire (Steel) |
| 208A | 691820 | Rod-Governor Control (Threaded) (Governor Idle Speed) | 271 | 691028 | Lever-Control | 779 | 691828 | Link-Bell Crank |
| 208B | 691821 | Rod-Governor Control (Fixed Speed) | 275 | 691683 | Screw (Throttle Control) | 780 | 690594 | Anchor-Spring (Throttle Control) |
| 216A | 691271 | Link-Choke (Choke A Matic) | 275A | 691646 | Screw (Throttle Control) | 780A | 691211 | Anchor-Spring (Governor Idle) |
| 217 | 691815 | Spring-Choke Return | 280 | 691184 | Bracket-Rod | 831 | 691683 | Screw (Spring Anchor) |
| | | | 344 | 691645 | Screw | 951 | 690436 | Lever-Choke (Choke A Matic) |
| | | | | | | 995 | 691756 | Bracket-Link |
| | | | | | | 1012 | 490507 | Retainer-Link |

★ Included in Engine Gasket Set-Ref. 358.

● Included in Carburetor Overhaul Kit-Ref. 121.

Ø Included in Valve Gasket Set-Ref. 1095.



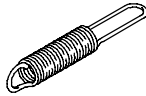
| REF. NO. | PART NO. | DESCRIPTION | REF. NO. | PART NO. | DESCRIPTION | REF. NO. | PART NO. | DESCRIPTION |
|-------------|---------------|-------------------|-------------|---------------|--------------------|-------------|----------------|---------------------|
| 24 | 691732 | Key–Flywheel | 356E | 692390 | Wire–Stop | 668 | 690531 | Spacer |
| 333 | 397358 | Armature–Magnet | 359 | 691077 | Washer | 729 | 690588 | Clip–Wire |
| 334 | 690306 | Screw | | | (Ground Terminal) | | | (Snap In, Nylon) |
| | | (Magnet Armature) | 373 | 691612 | Nut | 851 | 493880S | Terminal–Spark Plug |
| 334A | 691621 | Screw | | | (Ground Terminal) | 892 | 690646 | Switch–Key |
| | | (Magnet Armature) | 474 | 494254 | Alternator | 920 | 691656 | Solenoid–Starter |
| 347 | 691995 | Switch–Rocker | | | (Magnet Armature) | 990 | 691959 | Key Set |
| 356 | 398808 | Wire–Stop | 507 | 691972 | Insulator | 1054 | 280275 | Tie–Cable |
| 356A | 690650 | Wire–Stop | 520 | 691084 | Terminal–Ground | 1119 | 691183 | Screw |
| 356B | 690817 | Wire–Stop | 578 | 692306 | Wire Assembly | | | (Alternator) |
| 356D | 690818 | Wire–Stop | 627 | 690474 | Bracket–Stopswitch | | | |

- ★ Included in Engine Gasket Set—Ref. 358.
- Included in Carburetor Overhaul Kit—Ref. 121.

Ø Included in Valve Gasket Set—Ref. 1095.

135200 to 135299

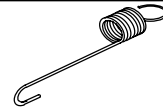
209



209C



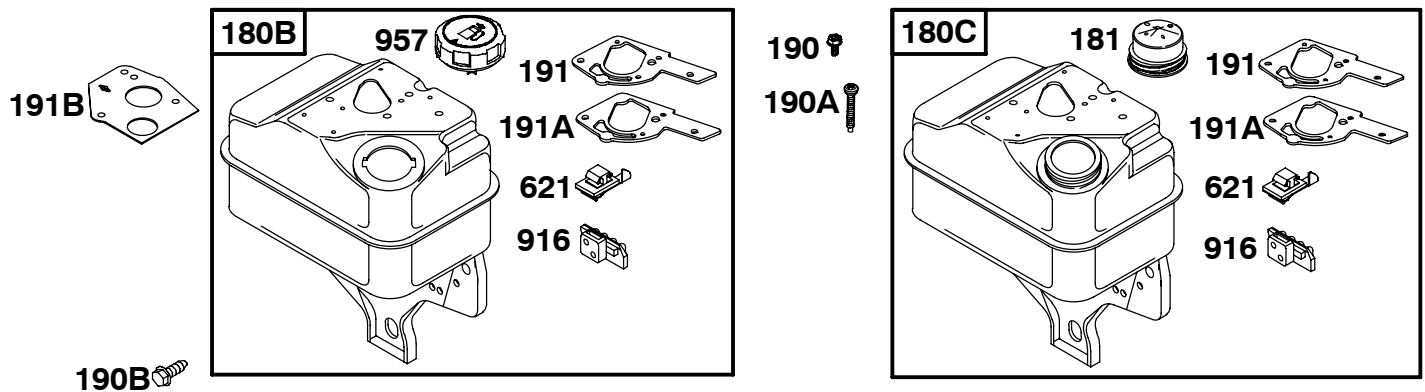
211



| REF. NO. | PART NO. | DESCRIPTION | REF. NO. | PART NO. | DESCRIPTION | REF. NO. | PART NO. | DESCRIPTION | | |
|----------|----------|--|----------|----------|--|----------|----------|---|--|---|
| 209 | 690376 | Spring-Governor (Rich Red) ----- Note ----- 691816 Spring-Governor (Black) Used on Type No(s). 0004, 0016, 0020, 0027, 0029, 0119, 0124, 0127, 0141, 0142, 0143, 0176, 0177, 0185, 0189, 0195, 0203, 0209, 0217, 0232, 0240, 0242, 0254, 0260, 0262, 0263, 0265, 0268, 0276, 0281, 0309, 0315, 0324, 1003, 1035, 1080, 1084, 1155, 1171, 1246, 1283, 1326, 1328, 1333. 690549 Spring-Governor (Blue) Used on Type No(s). 0018, 0215, 0225, 0248, 0603, 0607, 0611, 0615, 0623, 0625, 0635, 0636, 0649, 0660, 0670, 0671, 0679, 0700, 0702, 0704, 0717, 0730, 0740, 0747, 0759, 0762, 0767, 0779, 0780, 0784, 0788, 0790, 0814, 0815, 0913, 1005, 1007, 1008, 1009, 1011, 1019, 1023, 1025, 1036, 1049, 1050, 1060, 1070, 1071, 1073, 1079, 1105, 1106, 1139, 1140, 1143, 1146, 1147, 1153, 1154, 1157, 1158, 1159, 1161, 1167, 1169, 1173, 1179, 1180, 1186, 1190, 1194, 1196, 1197, 1200, | | | 1216, 1219, 1223, 1231, 1238, 1245, 1250, 1258, 1259, 1271, 1284, 1288, 1289, 1296, 1299, 1301, 1304, 1308, 1310, 1313, 1314, 1317, 1318, 1320, 1329, 1330. 691817 Spring-Governor (Green) Used on Type No(s). 0026, 0038, 0082, 0115, 0129, 0151, 0160, 0162, 0164, 0166, 0199, 0211, 0241, 0244, 0252, 0311, 0327, 0626, 0638, 0729, 0752, 0791, 1026, 1038, 1115, 1129, 1160, 1252, 1291, 1327, 1340. | | | | | 690550 Spring-Governor (Yellow) Used on Type No(s). 0059, 0072, 0075, 0083, 0093, 0126, 0163, 0228, 0251, 0292, 0297, 0312, 1072, 1093, 1292, 1312, 1342. 691845 Spring-Governor (Silver) Used on Type No(s). 0616, 0620, 0706, 0727, 0728, 1004, 1016, 1020, 1027, 1029, 1119, 1127, 1128, 1142, 1217, 1232, 1242, 1260, 1261, 1263, 1265, 1268, 1276, 1281, 1309, 1315, 1324, 1343, 1345. 692896 Spring-Governor (Bright Orange) Used on Type No(s). 1215. |
| | | | | | | 209C | 692208 | Spring-Governor (Green) Used on Type No(s). 0299, 1011, 1012. | | |
| | | | | | | 211 | 691850 | Spring-Governed Idle | | |

- ★ Included in Engine Gasket Set-Ref. 358.
- Included in Carburetor Overhaul Kit-Ref. 121.

Ø Included in Valve Gasket Set-Ref. 1095.



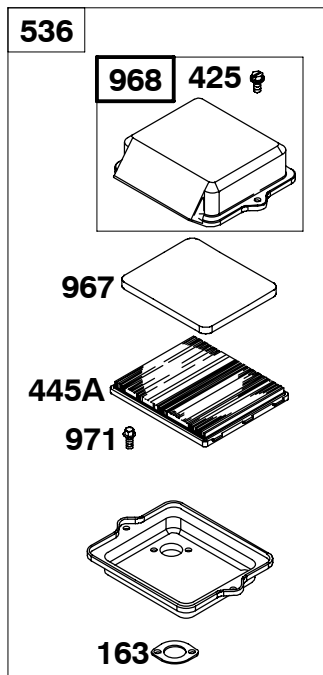
★ **NOTE: ALL FUN-KART APPLICATIONS USING MODEL SERIES 135200 ENGINES MUST USE 694315 FUEL TANK.**

| REF. NO. | PART NO. | DESCRIPTION | REF. NO. | PART NO. | DESCRIPTION | REF. NO. | PART NO. | DESCRIPTION |
|----------|----------|--|----------|-----------|--|----------|----------|---|
| 180B | 694315 | Tank-Fuel ----- Note ----- 495370 Tank-Fuel Used on Type No(s). 0214. | 190 | 692200 | Screw (Fuel Tank) | 916 | 691900 | Rack-Governor Gear (Black) ----- Note ----- 690583 Rack-Governor Gear (Natural) Used on Type No(s). 0016, 0019, 0071, 0147, 0148, 0185, 0195, 0200, 0213, 0214, 0216, 0232, 0260, 0263, 0306, 0310, 1016, 1071, 1147, 1200, 1232, 1260, 1263, 1310. |
| 180C | 494600 | Tank-Fuel Used on Type No(s). 0299, 1011, 1012, 0293. | 190A | 691687 | Screw (Fuel Tank) | | | |
| 181 | 394818S | Cap-Fuel Tank (Metal) (Threaded, Vented) ----- Note ----- 498156 Cap-Fuel Tank (Metal) (Threaded, Non Vented) Used on Type No(s). 0293. | 190B | 691685 | Screw (Fuel Tank) | | | |
| | | | 191 | ★●692241 | Gasket-Fuel Tank | | | |
| | | | 191A | ★●272996 | Gasket-Fuel Tank | | | |
| | | | 191B | ★●272409S | Gasket-Fuel Tank Used on Type No(s). 0299, 1011, 1012. | | | |
| | | | 621 | 692310 | Switch-Stop | | | |
| | | | | | | 957 | 494559 | Cap-Fuel Tank |

★ Included in Engine Gasket Set-Ref. 358.
● Included in Carburetor Overhaul Kit-Ref. 121.

Ø Included in Valve Gasket Set-Ref. 1095.

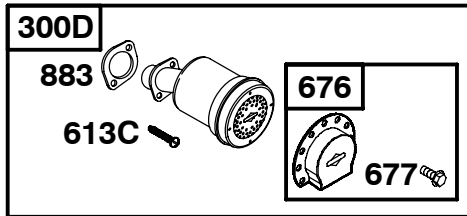
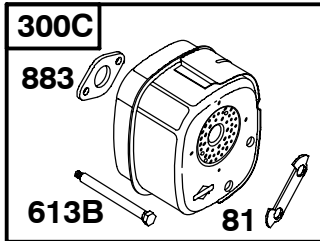
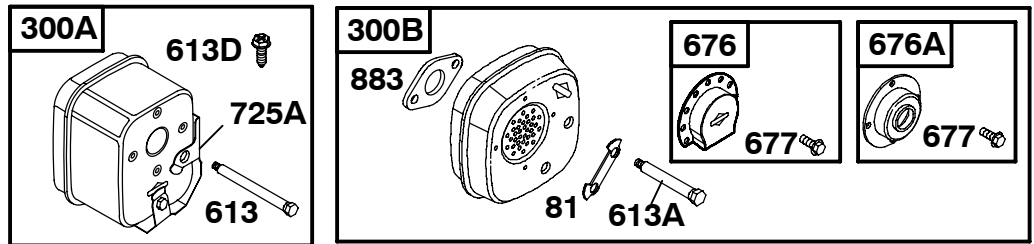
135200 to 135299



| REF. NO. | PART NO. | DESCRIPTION | REF. NO. | PART NO. | DESCRIPTION | REF. NO. | PART NO. | DESCRIPTION |
|----------|----------|--|----------|----------|--|----------|----------|----------------------------------|
| 161 | 691735 | Base-Air Cleaner | | | Cartridge | | | 0185, 0263, 1263. |
| 163★ | 271935S | Air Cleaner Gasket (Standard, Oval) | 467 | 691668 | Knob-Air Cleaner | 855 | 690599 | Adapter-Air Cleaner |
| 163A | 271139S | Air Cleaner Gasket (1 5/8" O.D. Round) | 536 | 494279 | Cleaner-Air (Rectangular) | 967 | 491435 | Filter-Pre Cleaner (Rectangular) |
| 163B | 690580 | Air Cleaner Gasket (1 15/16" O.D. Round) | 649 | 231332 | Stud (Air Cleaner Cover, 1/4" Diameter) | 967A | 271466 | Filter-Pre Cleaner (Round) |
| 425 | 694515 | Screw (Air Cleaner Cover) | | | ----- Note ----- | 968 | 692321 | Cover-Air Cleaner (Rectangular) |
| 445 | 396424 | Filter-Air Cleaner Cartridge (Canister) | | | 691248 Stud (Air Cleaner Cover, 1/2" Diameter) | 968A | 493822 | Cover-Air Cleaner (Canister) |
| 445A | 491588 | Filter-Air Cleaner | | | Used on Type No(s). | 971 | 690370 | Screw (Air Cleaner Base) |

★ Included in Engine Gasket Set-Ref. 358.
● Included in Carburetor Overhaul Kit-Ref. 121.

Ø Included in Valve Gasket Set-Ref. 1095.

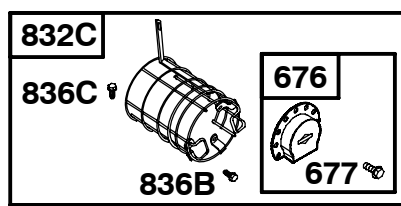
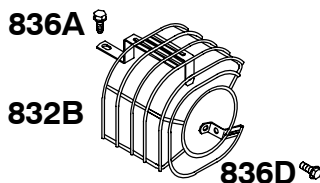
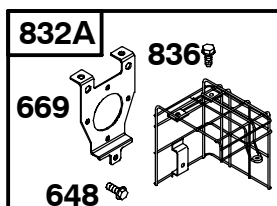
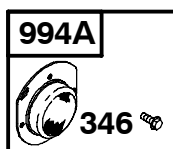
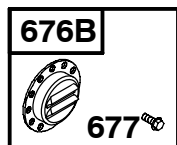
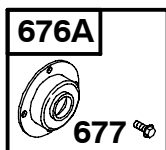
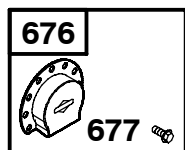


| REF. NO. | PART NO. | DESCRIPTION | REF. NO. | PART NO. | DESCRIPTION | REF. NO. | PART NO. | DESCRIPTION |
|----------|----------|---|----------|----------|---------------------------|----------|----------|---|
| 81 | 691729 | Lock-Muffler Screw | 303 | 94089 | Elbow-Exhaust | 676 | 393757 | Deflector-Muffler (Side Out) (Deep) |
| 298 | 690453 | Locknut-Muffler/Elbow | 613 | 691351 | Screw (Muffler) | | | ----- Note ----- |
| 300A | 691969 | Muffler (Super Lo Tone) | 613A | 691413 | Screw (Muffler) | | | 494423 Deflector-Muffler (Side Out) (Shallow) |
| 300B | 494585 | Muffler | 613B | 691632 | Screw (Muffler) | | | Used on Type No(s). 0029, 0167, 0190, 0225, 0248, 0276, 0767, 1029, 1276, 1167, 1190. |
| | | ----- Note ----- | 613C | 691665 | Screw (Muffler) | 676A | 395700 | Deflector-Muffler (Direct Out) |
| | | (Heat Shield Supplied By Equipment Manufacturer) | 613D | 690810 | Screw (Muffler) | 677 | 690661 | Screw (Muffler Deflector) |
| | | Used on Type No(s). 0185. | 613E | 692557 | Screw (Muffler) | 725A | 690466 | Shield-Heat (Muffler) |
| 300C | 390918 | Muffler (Lo Tone) | | | Used on Type No(s). 1127. | 883 | ★692237 | Gasket-Exhaust |
| | | ----- Note ----- | | | | 981 | 690408 | Brace-Muffler |
| | | 692304 Muffler (Lo Tone) | | | | | | |
| | | Used on Type No(s). 0072, 0075, 0142, 0143, 0193, 0195, 0198, 0208, 0244, 0315, 0316, 1072, 1075, 1127, 1142, 1143, 1315. | | | | | | |
| 300D | 496892 | Muffler (Round Lo Tone) | | | | | | |
| | | Used on Type No(s). 0138, 0165, 0227, 0274. | | | | | | |

★ Included in Engine Gasket Set-Ref. 358.
● Included in Carburetor Overhaul Kit-Ref. 121.

Ø Included in Valve Gasket Set-Ref. 1095.

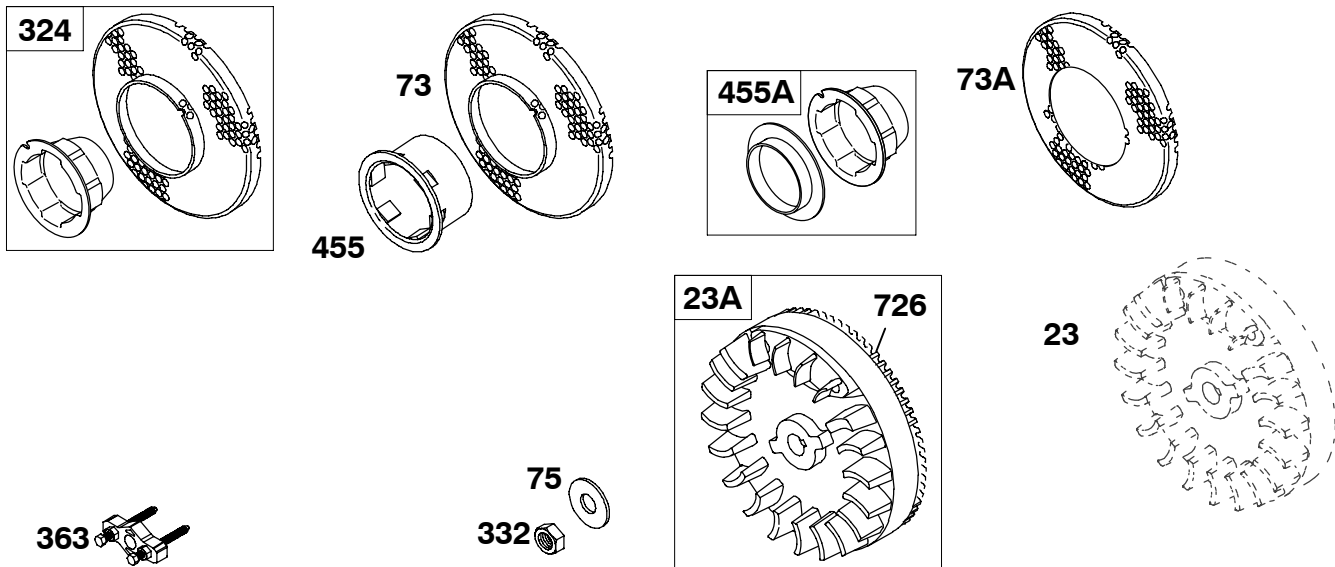
135200 to 135299



| REF. NO. | PART NO. | DESCRIPTION | REF. NO. | PART NO. | DESCRIPTION | REF. NO. | PART NO. | DESCRIPTION |
|----------|----------|---|----------|----------|-------------------------------|----------|----------|-----------------------|
| 346 | 690661 | Screw (Spark Arrestor) | 677 | 690661 | Screw (Muffler Deflector) | 836 | 691683 | Screw (Muffler Guard) |
| 648 | 691660 | Screw (Muffler Guard Bracket) | 725A | 690440 | Shield-Heat (Fuel Tank) | 836A | 690810 | Screw (Muffler Guard) |
| 669 | 690425 | Bracket-Muffler Guard | 832A | 490534 | Guard-Muffler (Super Lo Tone) | 836B | 690367 | Screw (Muffler Guard) |
| 676 | 393757 | Deflector-Muffler (Side Out) (Deep) | 832B | 690625 | Guard-Muffler (Lo Tone) | 836C | 691681 | Screw (Muffler Guard) |
| | | ----- Note ----- | 832C | 498257 | Guard-Muffler (Round Lo Tone) | 836D | 690661 | Screw (Muffler Guard) |
| | | 494423 Deflector-Muffler (Side Out) (Shallow) | | | | 994A | 399541 | Arrestor-Spark |
| | | Used on Type No(s). 0029, 0167, 0190, 0225, 0248, 0276, 0767, 1029, 1276, 1167, 1190. | | | | | | |
| 676A | 395700 | Deflector-Muffler (Direct Out) | | | | | | |
| 676B | 393758 | Deflector-Muffler (Louvered) | | | | | | |

★ Included in Engine Gasket Set-Ref. 358.
● Included in Carburetor Overhaul Kit-Ref. 121.

Ø Included in Valve Gasket Set-Ref. 1095.

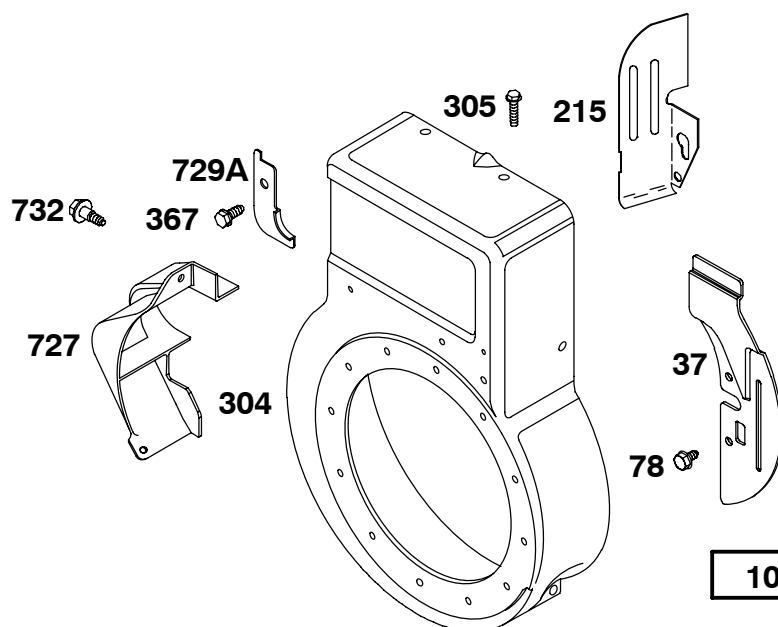


| REF. NO. | PART NO. | DESCRIPTION | REF. NO. | PART NO. | DESCRIPTION | REF. NO. | PART NO. | DESCRIPTION |
|----------|----------|--|----------|----------|---|----------|----------|--|
| 23 | | Flywheel (No Longer Available) (Rewind Start) | 75 | 690582 | Washer (Flywheel) | 455 | 224250 | Cup-Flywheel (Straight Side Cup) (Used Before Code Date 95020300). |
| 23A | 690820 | Flywheel (With Ring Gear) | 324 | 695161 | Screen/Cup Assembly (Used After Code Date 95010800). | 455A | 494770 | Cup-Flywheel (Straight Side Cup With Rotating Screen Ring) |
| 73 | 224883 | Screen-Rotating (Used Before Code Date 95020300). | 332 | 690662 | Nut (Flywheel) | 726 | 495765 | Gear-Ring (Includes Mounting Hardware) |
| 73A | 691226 | Screen-Rotating (Used After Code Date 95010800). ----- Note ----- 224974 Screen-Rotating (Used Before Code Date 95010900). | 363 | 19069 | Flywheel Puller | | | |

★ Included in Engine Gasket Set-Ref. 358.
● Included in Carburetor Overhaul Kit-Ref. 121.

Ø Included in Valve Gasket Set-Ref. 1095.

135200 to 135299

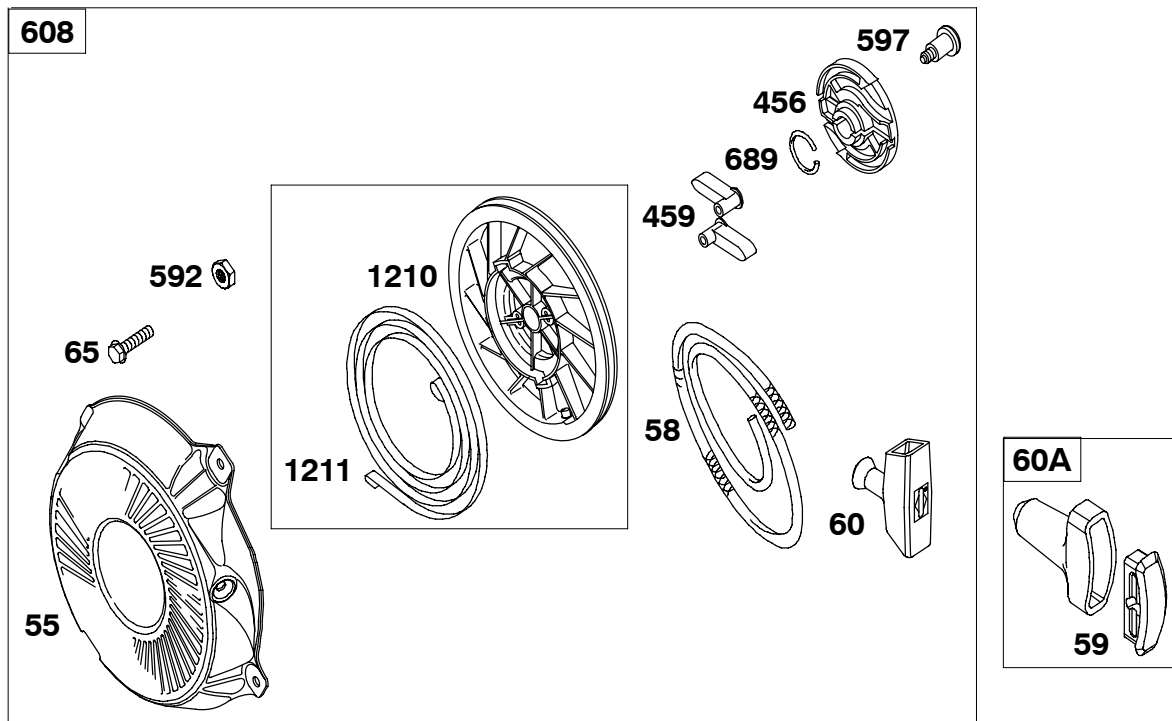


1036 EMISSIONS LABEL

| REF. NO. | PART NO. | DESCRIPTION | REF. NO. | PART NO. | DESCRIPTION | REF. NO. | PART NO. | DESCRIPTION |
|----------|----------|-----------------------------------|----------|----------|------------------------|----------|----------|---|
| 37 | 691732 | Guard-Flywheel | 305 | 692198 | Screw (Blower Housing) | 729A | 690471 | Clip-Wire (Steel) |
| 78 | 691660 | Screw (Flywheel Guard) | 367 | 691660 | Screw (Wire Clip) | 732 | 691097 | Screw (Starter Drive Cover) |
| 215 | 691745 | Guide-Air (Rewind Start) | 727 | 690600 | Cover-Starter Drive | 1036 | | Label-Emission (Available from A Briggs & Stratton Authorized Dealer) |
| | | ----- Note ----- | | | | | | |
| | | 690472 Guide-Air (Electric Start) | | | | | | |
| 304 | 495759 | Housing-Blower | | | | | | |

- ★ Included in Engine Gasket Set-Ref. 358.
- Included in Carburetor Overhaul Kit-Ref. 121.

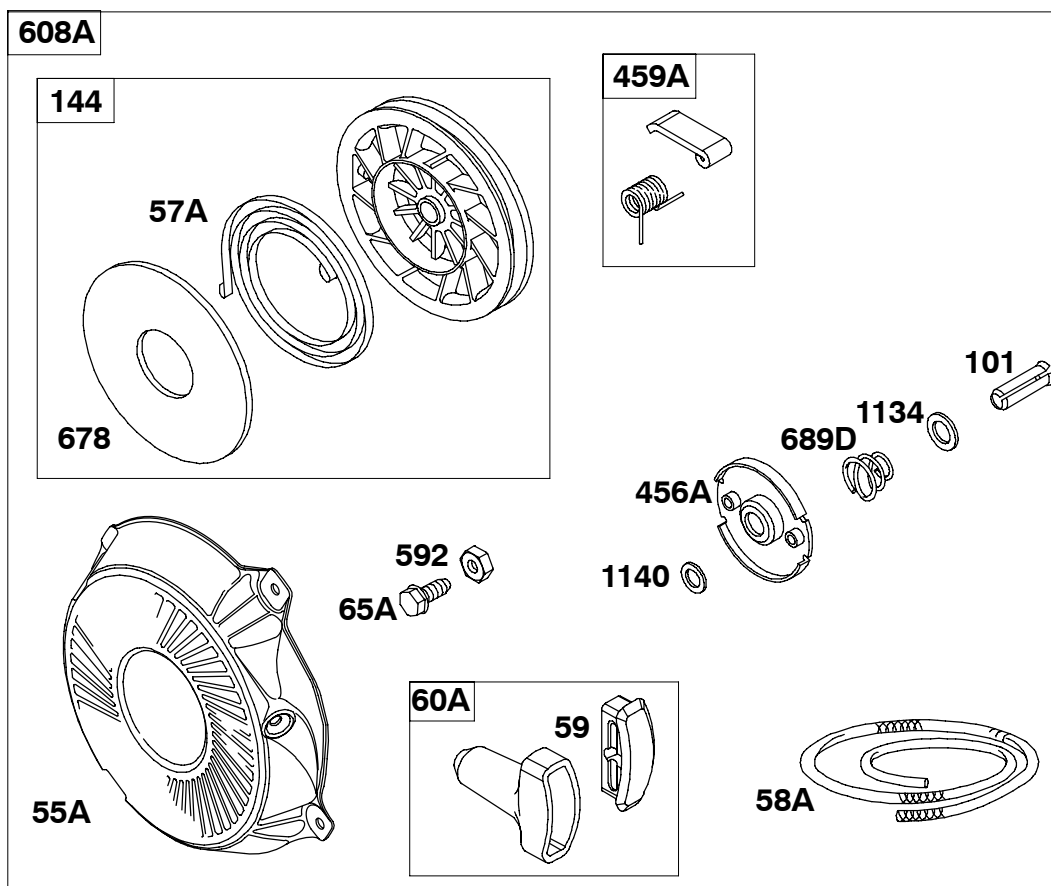
Ø Included in Valve Gasket Set-Ref. 1095.



| REF. NO. | PART NO. | DESCRIPTION | REF. NO. | PART NO. | DESCRIPTION | REF. NO. | PART NO. | DESCRIPTION |
|----------|----------|---------------------------------------|----------|----------|-----------------------------|----------|----------|---------------------------------|
| 55 | 691422 | Housing-Rewind Starter | 65 | 690837 | Screw (Rewind Starter) | 689C | 691855 | Spring-Friction (Ratchet Pawl) |
| 58 | 691921 | Rope-Starter (Cut To Required Length) | 456 | 692299 | Plate-Pawl Friction | 1210 | 498144 | Pulley/Spring Assembly (Pulley) |
| 59 | 396892 | Insert-Grip | 459 | 281505 | Pawl-Ratchet | 1211 | 498144 | Pulley/Spring Assembly (Spring) |
| 60 | 691915 | Grip-Starter Rope (1 Piece) | 592 | 690800 | Nut (Rewind Starter) | | | |
| 60A | 393152 | Grip-Starter Rope (2 Piece) | 597 | 691696 | Screw (Pawl Friction Plate) | | | |
| | | | 608 | 497830 | Starter-Rewind | | | |

★ Included in Engine Gasket Set-Ref. 358.
 ● Included in Carburetor Overhaul Kit-Ref. 121.

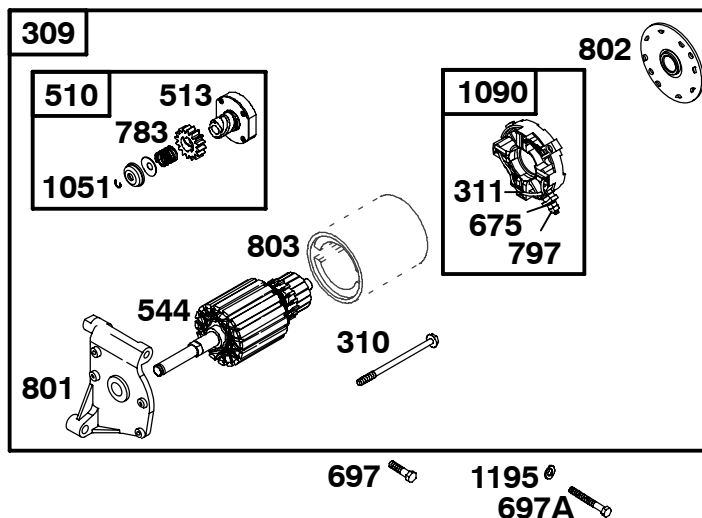
Ø Included in Valve Gasket Set-Ref. 1095.



| REF. NO. | PART NO. | DESCRIPTION | REF. NO. | PART NO. | DESCRIPTION | REF. NO. | PART NO. | DESCRIPTION |
|------------|---------------|---|-------------|---------------|----------------------------------|-------------|---------------|---|
| 55A | | Housing–Rewind Starter (For Complete Rewind Starter Service, See Ref 608, Previous Page) | 60A | 393152 | Grip–Starter Rope | 608A | | Starter–Rewind (For Complete Rewind Starter Service, See Ref 608, Previous Page) |
| 57A | 491889 | Rewind Starter Spring | 65A | 94686 | Screw (Rewind Starter) | 678 | 224278 | Rewind Spacer |
| 58A | 280406 | Starter Rope (Cut To Required Length) | 101 | 262626 | Shaft Pin | 689D | 262625 | Friction Spring |
| 59 | 396892 | Insert–Grip | 144 | 493824 | Starter Pulley | 1134 | 498144 | Washer (Pawl Friction Plate) |
| | | | 456A | 224321 | Plate–Pawl Friction | 1140 | 280973 | Washer (Rewind Starter) |
| | | | 459A | 492833 | Pawl–Ratchet (Rewind Starter) | | | |
| | | | 592 | 690800 | Nut | | | |

★ Included in Engine Gasket Set–Ref. 358.
● Included in Carburetor Overhaul Kit–Ref. 121.

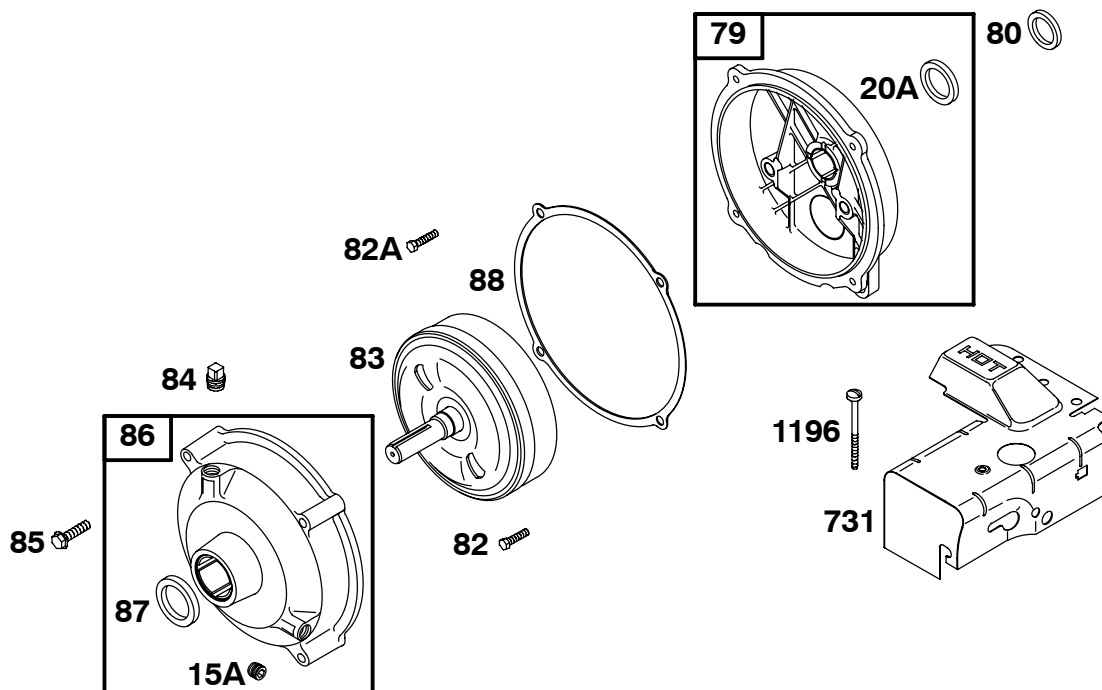
Ø Included in Valve Gasket Set–Ref. 1095.



| REF. NO. | PART NO. | DESCRIPTION | REF. NO. | PART NO. | DESCRIPTION | REF. NO. | PART NO. | DESCRIPTION |
|----------|----------|------------------|----------|----------|-----------------------|----------|----------|-----------------------|
| 309 | 690658 | Motor-Starter | 697 | 693972 | Screw | 801 | 690835 | Cap-Drive |
| 310 | 690323 | Bolt | | | (Drive Cap) | 802 | 691286 | Cap-End |
| | | (Starter Motor) | 697A | 690298 | Screw | 803 | | Housing-Starter |
| 311 | 497608 | Set-Brush | | | (Drive Cap) | | | (No Longer Available) |
| 510 | 499308 | Drive-Starter | | | (Starter Drive Cover) | 1051 | 691265 | Ring-Retaining |
| 513 | 692024 | Clutch-Drive | 783 | 692353 | Gear-Pinion | 1090 | 691293 | Retainer-Brush |
| 544 | 692966 | Armature-Starter | 797 | 691029 | Nut | 1195 | 691075 | Washer |
| 675 | 691621 | Washer | | | (Brush Retainer) | | | (Drive Cap) |
| | | (Brush Retainer) | | | | | | |

★ Included in Engine Gasket Set-Ref. 358.
 ● Included in Carburetor Overhaul Kit-Ref. 121.

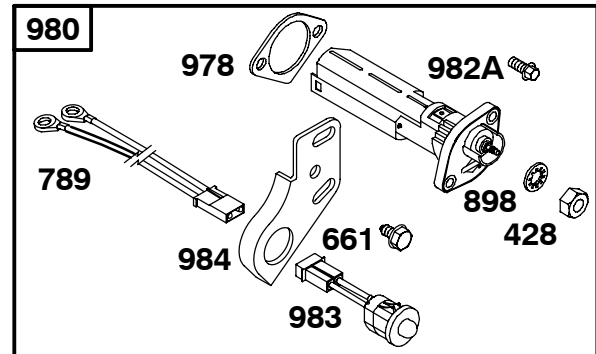
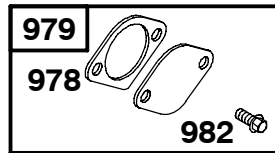
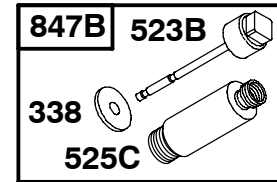
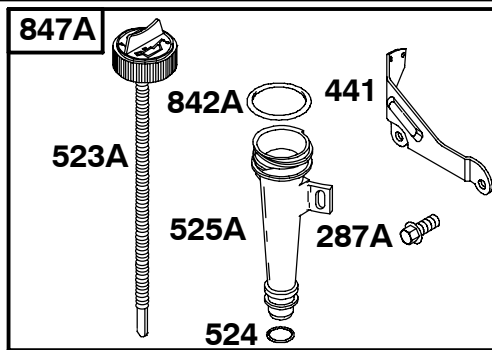
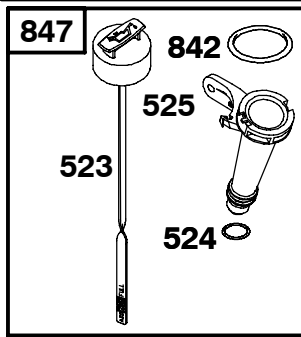
Ø Included in Valve Gasket Set-Ref. 1095.



| REF. NO. | PART NO. | DESCRIPTION | REF. NO. | PART NO. | DESCRIPTION | REF. NO. | PART NO. | DESCRIPTION |
|----------|----------|---|----------|----------|--------------------------------------|----------|----------|-----------------------------|
| 15A | 691682 | Plug–Oil Drain Plug (Flush) | 82 | 690369 | Screw (Gear Reduction Case) | 86 | 690608 | Cover–Gear |
| 20A | ★299819 | Seal–Oil (PTO Side) (53/64" I.D. Without Spring) | 82A | 699164 | Screw (Gear Reduction Case) | 87 | 691582 | Seal–Gear Reduction |
| 79 | 690605 | Case–Gear Reduction | 83 | 690374 | Shaft–Auxiliary Drive | 88 | 691600 | Gasket–Gear Reduction Cover |
| 80 | 691602 | Gasket–Gear Case | 84 | 691121 | Plug–Breather | 731 | 399183 | Hood–Snow |
| | | | 85 | 691117 | Screw (Gear Cover To Gear Reduction) | 1196 | 93977 | Screw (Snow Hood) |

★ Included in Engine Gasket Set–Ref. 358.
 ● Included in Carburetor Overhaul Kit–Ref. 121.

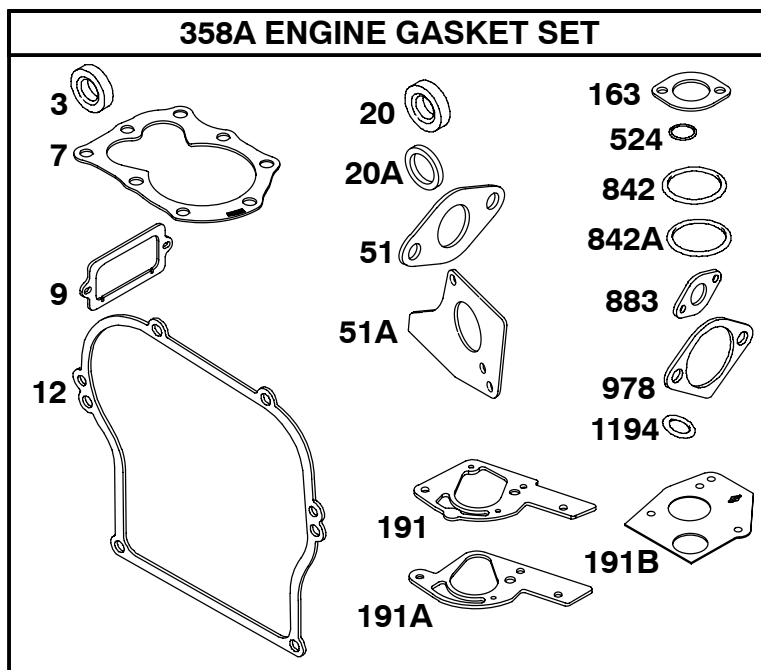
Ø Included in Valve Gasket Set–Ref. 1095.



| REF. NO. | PART NO. | DESCRIPTION | REF. NO. | PART NO. | DESCRIPTION | REF. NO. | PART NO. | DESCRIPTION |
|----------|----------|--|----------|----------|--|----------|----------|---|
| 287 | | Screw (No Longer Available) | 524 | ★691876 | Seal-Dipstick Tube | 847 | 694381 | Dipstick/Tube Assembly (Without Bracket) (Used After Code Date 99031400). |
| 287A | 691693 | Screw (Dipstick Tube) | 525 | 694379 | Tube-Dipstick (31/32" ID Top) (Used After Code Date 99031400). | 847A | 691379 | Dipstick/Tube Assembly (With Bracket) (Used Before Code Date 99031500). |
| 338 | 690270 | Gasket-Dipstick | 525A | 694531 | Tube-Dipstick (1 1/64" ID Top) (Used Before Code Date 99031500). | 847B | 493955 | Dipstick/Tube Assembly (Uses 691257 Dipstick Tube) |
| 428 | 691612 | Nut (OIL GARD® Kit) | 525C | 691257 | Tube-Dipstick (Oil Filler Pipe Adapter) (3 1/8" Long) | 898 | 691077 | Washer (OIL GARD® Kit) |
| 441 | 690448 | Bracket-Oil Fill | 661 | 690661 | Screw (OIL GARD® Light Bracket) | 978 | ★273326 | Gasket-OIL GARD® |
| 523 | 499621 | Dipstick (8 7/16" Flat Wire) (Used After Code Date 99031400). | 789 | 398661 | Harness-Wiring | 979 | 691382 | Cover-OIL GARD® |
| 523A | 691388 | Dipstick (7 11/16" Spring) (Used Before Code Date 99031500). | 842 | ★691031 | Seal-O Ring (Dipstick Tube) (Used After Code Date 99031400). | 980 | 398182 | Kit-OIL GARD® |
| 523B | 691942 | Dipstick (4 13/16" Round Bar) ----- Note ----- 690777 Dipstick (8 11/16" Spring) Used on Type No(s). 0255, 0273, 0294, 0307, 0308, 1008, 1308. | 842A | ★691870 | Seal-O Ring (Dipstick Tube) (Used Before Code Date 99031500). | 982 | 690351 | Screw (OIL GARD Cover) |
| | | | | | | 982A | 690350 | Screw (OIL GARD Cover) |
| | | | | | | 983 | 398660 | Light-Indicator |
| | | | | | | 984 | 692340 | Bracket-OIL GARD® Light |

★ Included in Engine Gasket Set-Ref. 358.
● Included in Carburetor Overhaul Kit-Ref. 121.

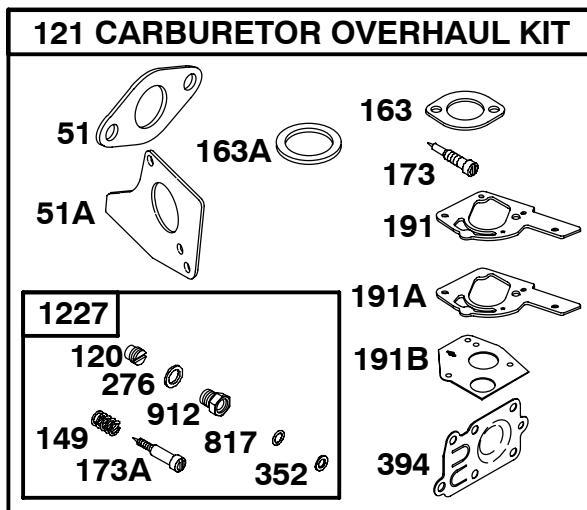
Ø Included in Valve Gasket Set-Ref. 1095.



| REF. NO. | PART NO. | DESCRIPTION | REF. NO. | PART NO. | DESCRIPTION | REF. NO. | PART NO. | DESCRIPTION |
|----------|----------|---|----------|-----------|--|----------|----------|--|
| 3 | ★299819 | Seal–Oil (Magneto Side) | 51 | ★●27355 | Gasket–Intake Used on Type No(s). 0299, 1101, 1012, 1309. | 842 | ★691031 | Seal–O Ring (Dipstick Tube) (Used After Code Date 99031400). |
| 7 | ★Ø272157 | Gasket–Cylinder Head | 51A | ★Ø●273113 | Gasket–Intake | 842A | ★691870 | Seal–O Ring (Dipstick Tube) (Used Before Code Date 99031500). |
| 9 | ★Ø27549 | Gasket–Breather | 163 | ★Ø271935 | Gasket–Air Cleaner (Standard, Oval) | 883 | ★692237 | Gasket–Exhaust |
| 12 | ★692213 | Gasket–Crankcase (Standard) | 191 | ★●692241 | Gasket–Fuel Tank | 978 | ★273326 | Gasket–OIL GARD® |
| | | ----- Note ----- | 191A | ★●272996 | Gasket–Fuel Tank | 1194 | ★691876 | Seal–O Ring (Plug) |
| | | ★270125 Gasket– Crankcase (.005" Thick) | 191B | ★●272409 | Gasket–Fuel Tank Used on Type No(s). 0299, 1011, 1012. | | | |
| | | ★270126 Gasket– Crankcase (.009" Thick) | 358A | 495603 | Gasket Set–Engine | | | |
| 20 | ★495307 | Seal–Oil (PTO Side) | 524 | ★691876 | Seal–Dipstick Tube | | | |
| 20A | ★299819 | Seal–Oil (PTO Side) | | | | | | |

★ Included in Engine Gasket Set–Ref. 358.
● Included in Carburetor Overhaul Kit–Ref. 121.

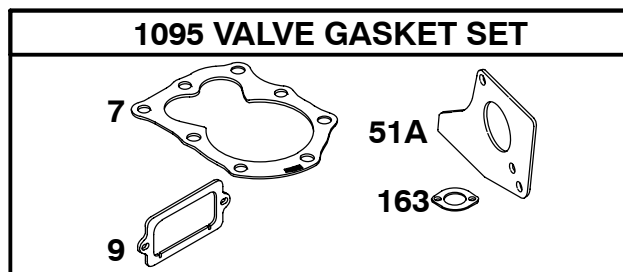
Ø Included in Valve Gasket Set–Ref. 1095.



| REF. NO. | PART NO. | DESCRIPTION | REF. NO. | PART NO. | DESCRIPTION | REF. NO. | PART NO. | DESCRIPTION |
|----------|----------|--|----------|----------|--|----------|----------|-----------------------------------|
| 51 | ★●27355 | Gasket-Intake Used on Type No(s). 0299, 1101, 1012, 1309. | 173 | ●691777 | Valve-Idle Mixture (Idle) | 394 | ●272538 | Diaphragm-Carburetor (Pump) |
| 51A | ★●273113 | Gasket-Intake | 173A | ●690266 | Valve-Idle Mixture (Main) | 817 | ●691606 | Seal-O Ring (High Speed Valve) |
| 120 | ●692134 | Seat-Needle Valve | 191 | ★●692241 | Gasket-Fuel Tank | 912 | ●690504 | Nut-Needle Valve |
| 121 | 495606 | Kit-Carburetor Overhaul | 191A | ★●272996 | Gasket-Fuel Tank | 1227 | ●299060 | Valve-High Speed |
| 149 | ●691592 | Spring-Needle Valve | 191B | ★●272409 | Gasket-Fuel Tank Used on Type No(s). 0299, 1011, 1012. | | | |
| 163 | ★●271935 | Gasket-Air Cleaner (Standard, Oval) | 276 | ●691608 | Washer-Sealing | | | |
| 163A | ●271139 | Gasket-Air Cleaner (1 5/8" O.D. Round) | 352 | ●690257 | Washer (High Speed Valve) | | | |

★ Included in Engine Gasket Set-Ref. 358.
● Included in Carburetor Overhaul Kit-Ref. 121.

Ø Included in Valve Gasket Set-Ref. 1095.



| REF. NO. | PART NO. | DESCRIPTION | REF. NO. | PART NO. | DESCRIPTION | REF. NO. | PART NO. | DESCRIPTION |
|-------------|------------------------------|----------------------|-------------|-----------------------------|--|-------------|-------------|-------------|
| | 7 ★Ø 272157 | Gasket-Cylinder Head | | 163 ★Ø 271935 | Gasket-Air Cleaner (Standard, Oval) | | | |
| | 9 ★Ø 27549 | Gasket-Breather | | 1095 498529 | Gasket Set-Valve | | | |
| | 51A ★Ø● 273113 | Gasket-Intake | | | | | | |

- ★ Included in Engine Gasket Set-Ref. 358.
- Included in Carburetor Overhaul Kit-Ref. 121.

Ø Included in Valve Gasket Set-Ref. 1095.