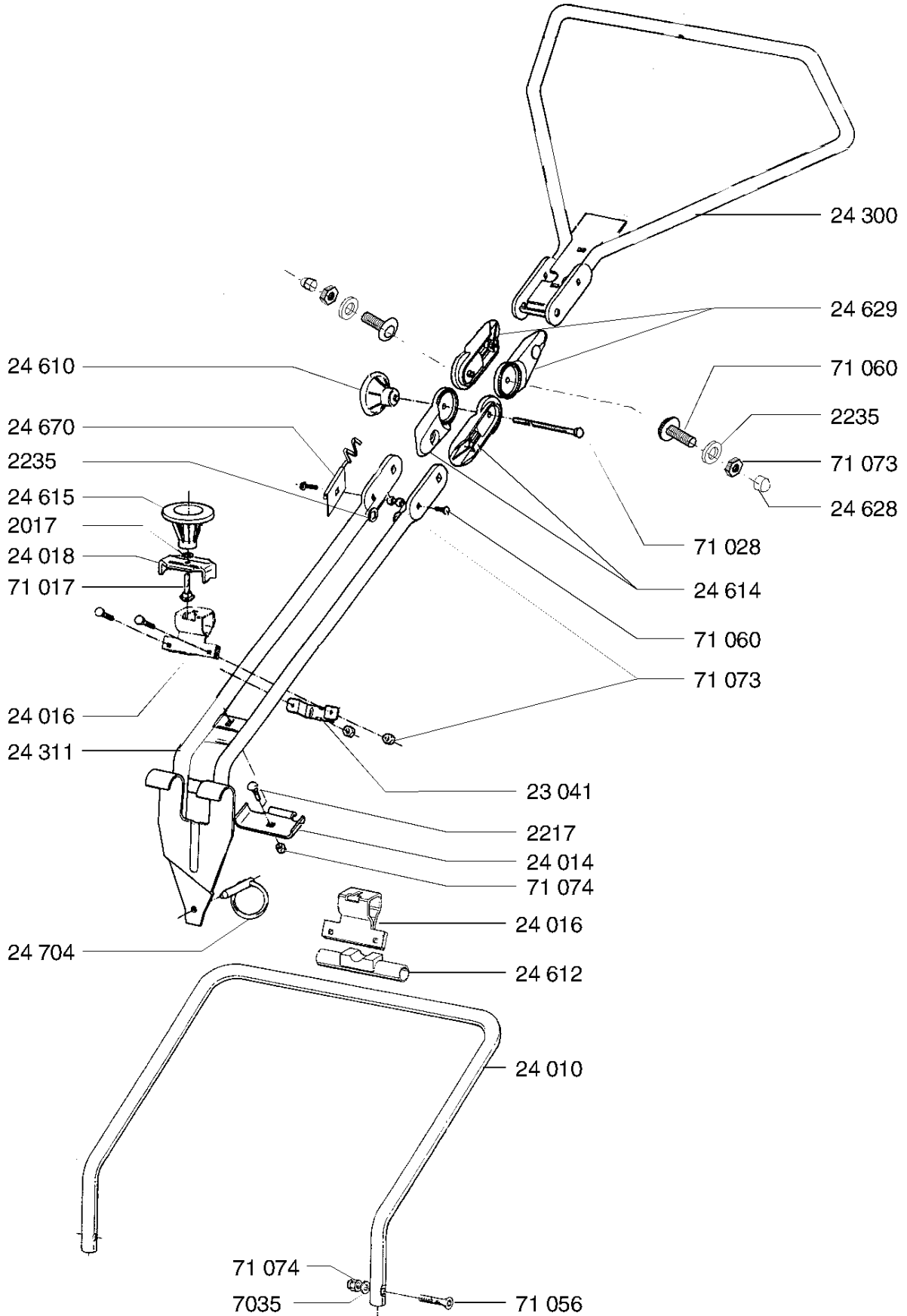
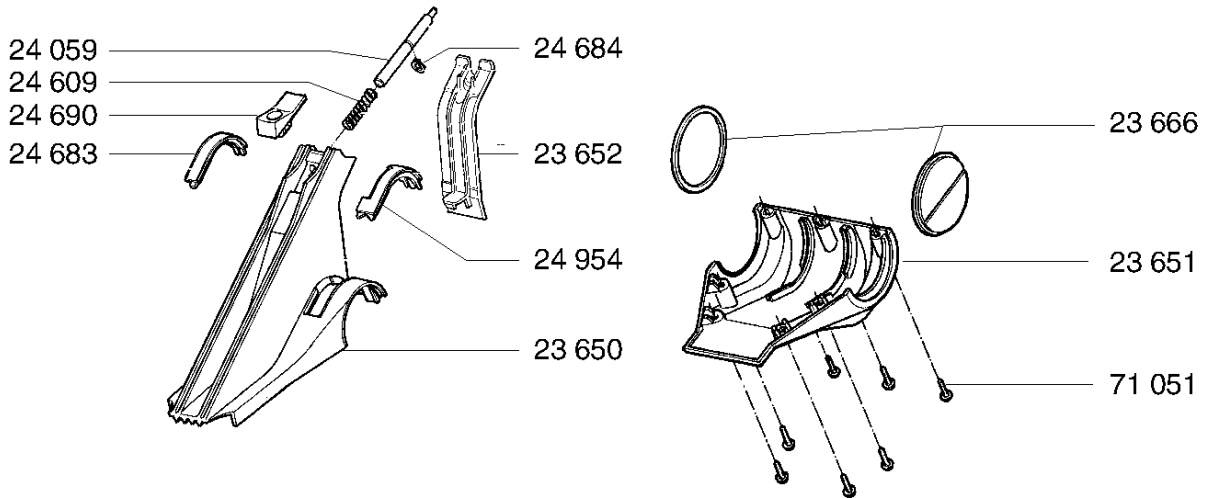


TA - TAE - TAF - TAK - TAKF - TB - TBF - TEB - TEBE - TEBF -  
 TEC - TECO - THF - TKO - TKOE - TS - TS

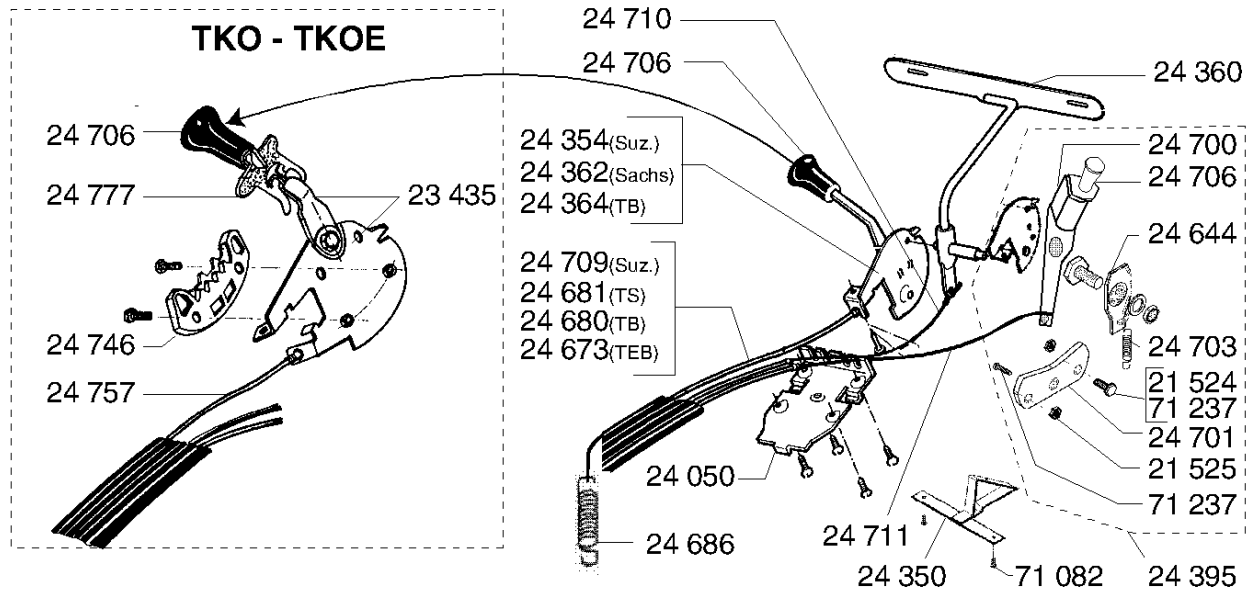


TA - TAE - TAK - TKO - TKOE - TS

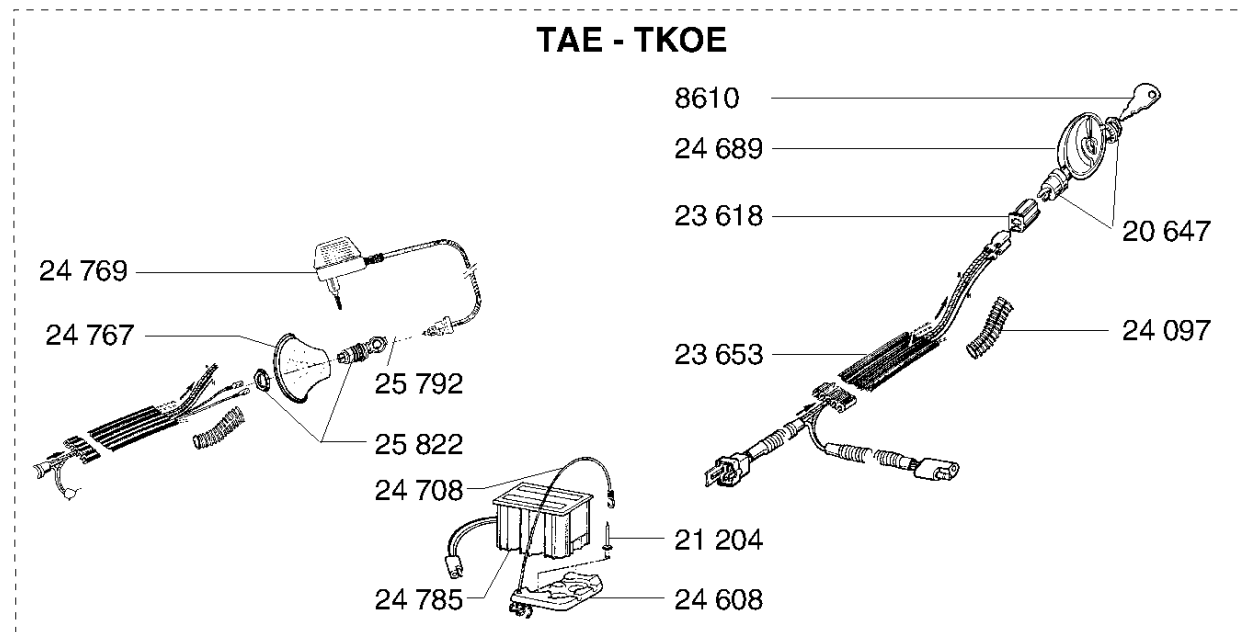
← 94



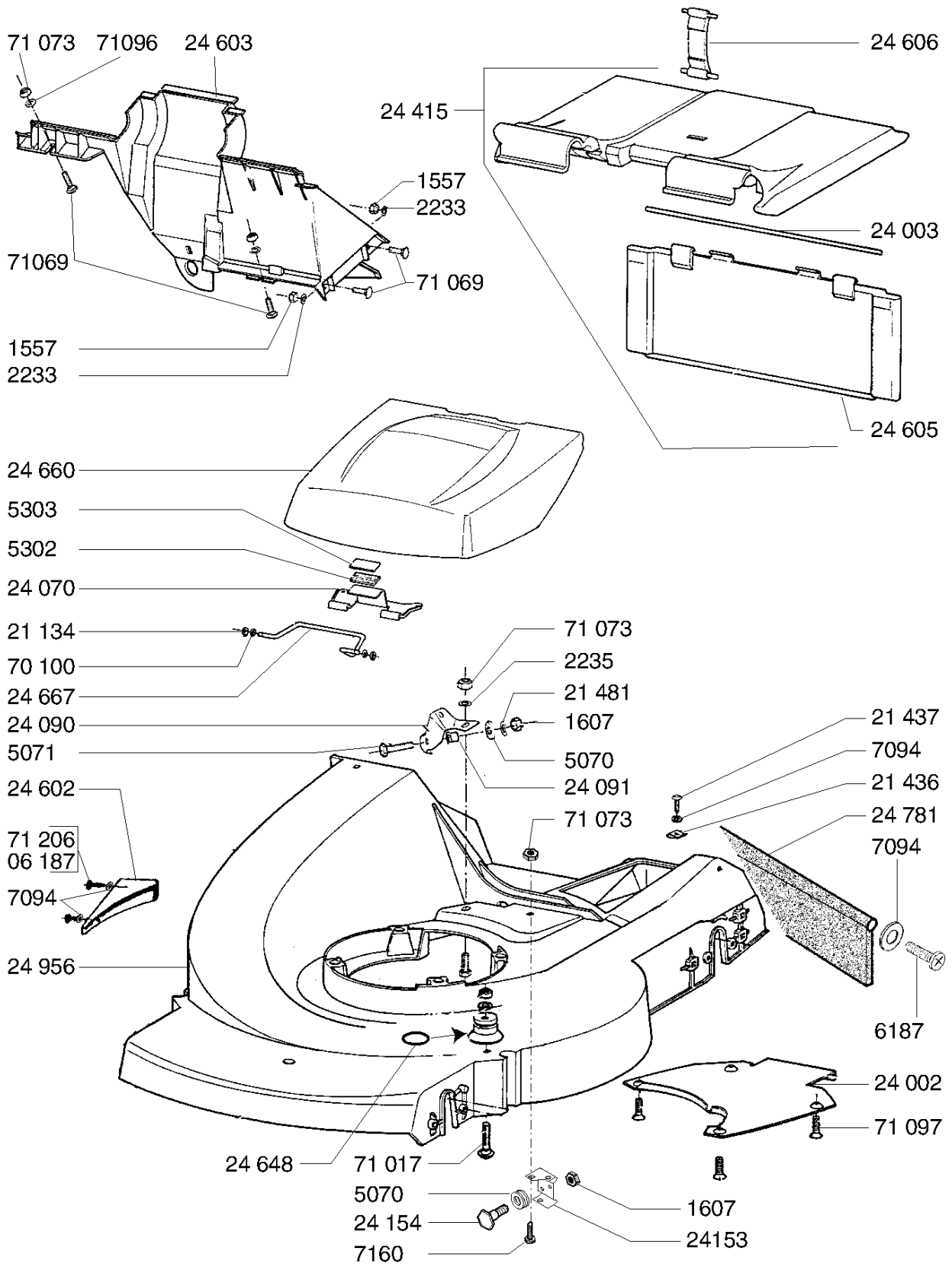
TKO - TKOE



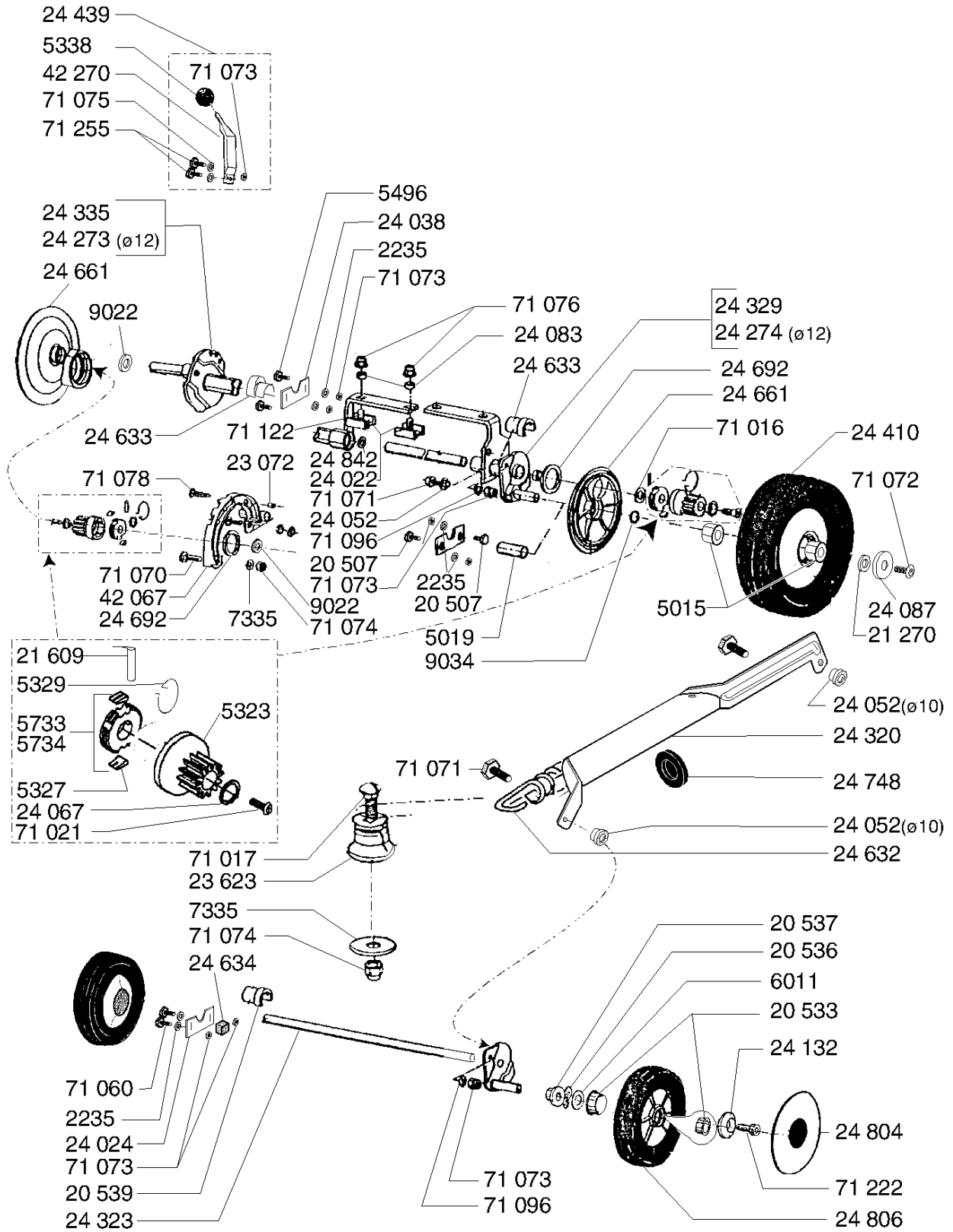
TAE - TKOE



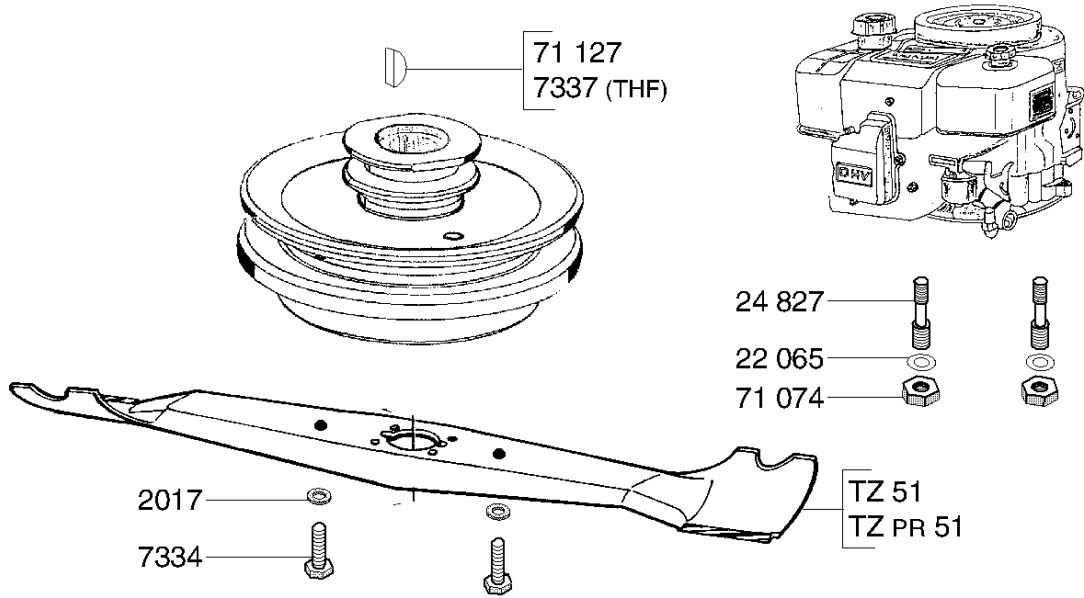
TA - TAE - TAF - TAK - TAKF - TB - TBF - TEB - TEBE - TEBF -  
TEC - TECO - TKO - TKOE - TS



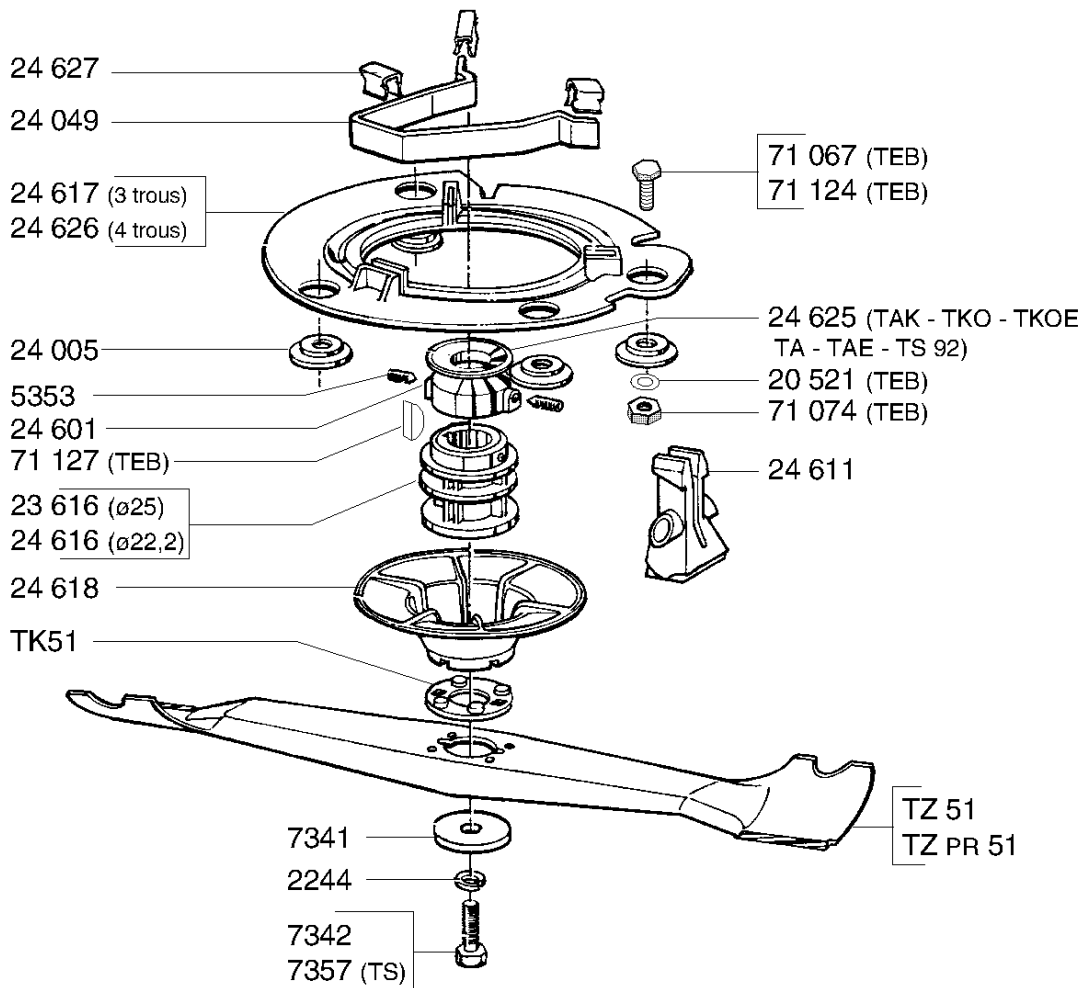
TA - TAE - TAF - TAK - TAKF - TBF - TEBF - TEB 94 - TEBF - THF - TKO - TKOE



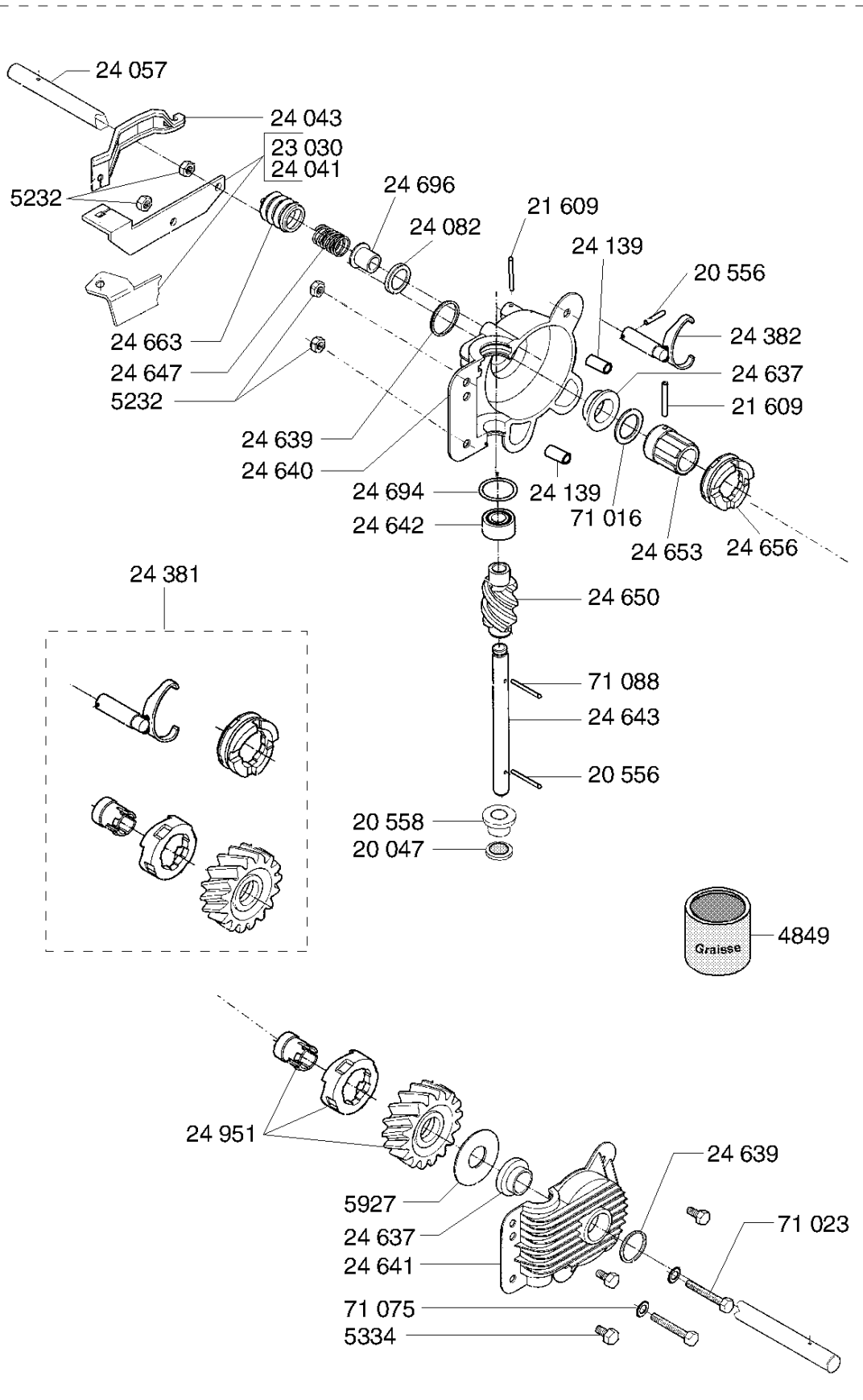
**TAKF - TEBF - THF**



**TA - TAE - TAK - TB - TEB - TEBE - TEC - TECO - TKO - TKOE - TECO - TS**



# Réducteur Clabot NG 51 ← 1996



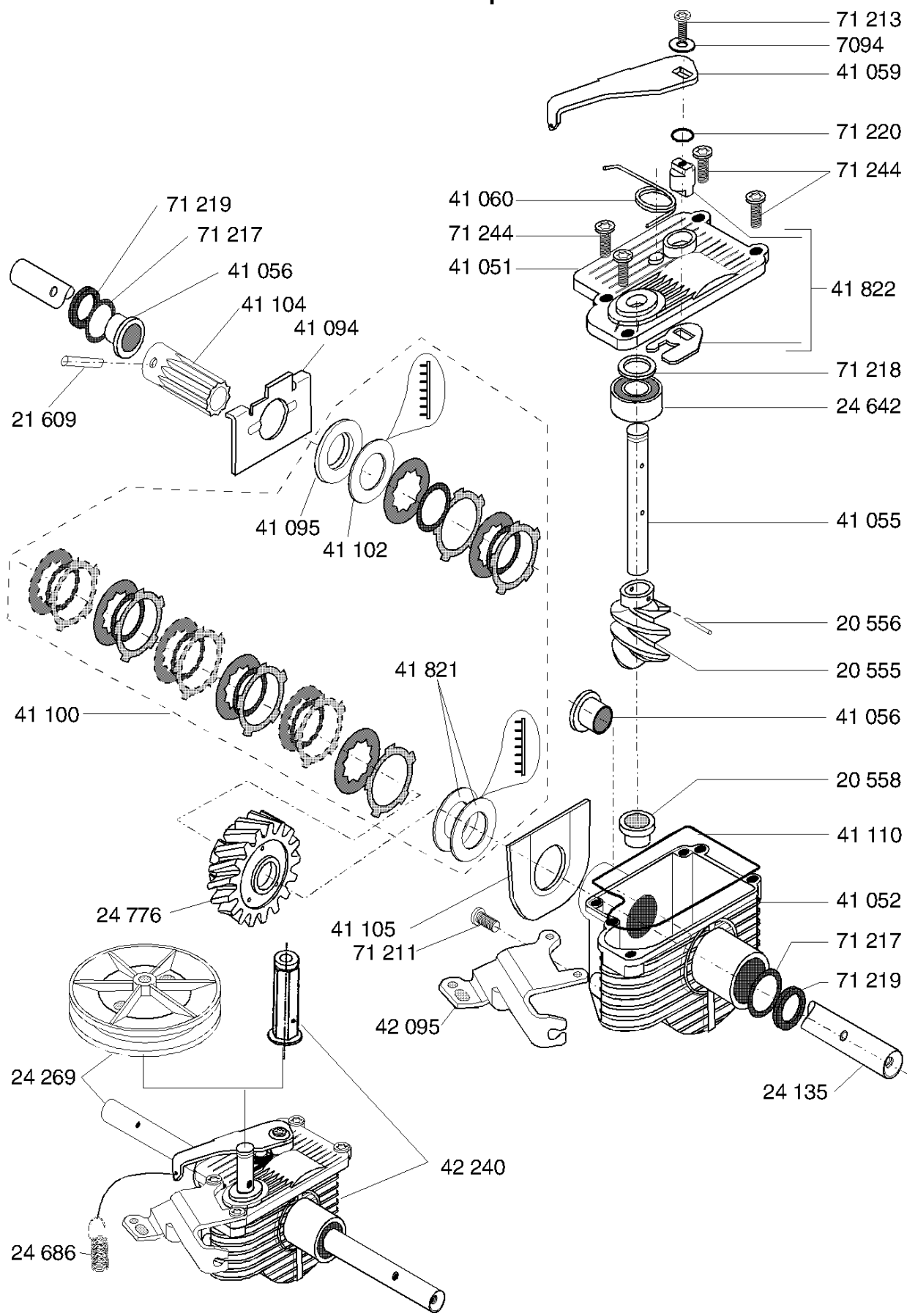
## 1 Vitesse

- 24 976 (Kit CFT)
- 24 978 (Kit STD)

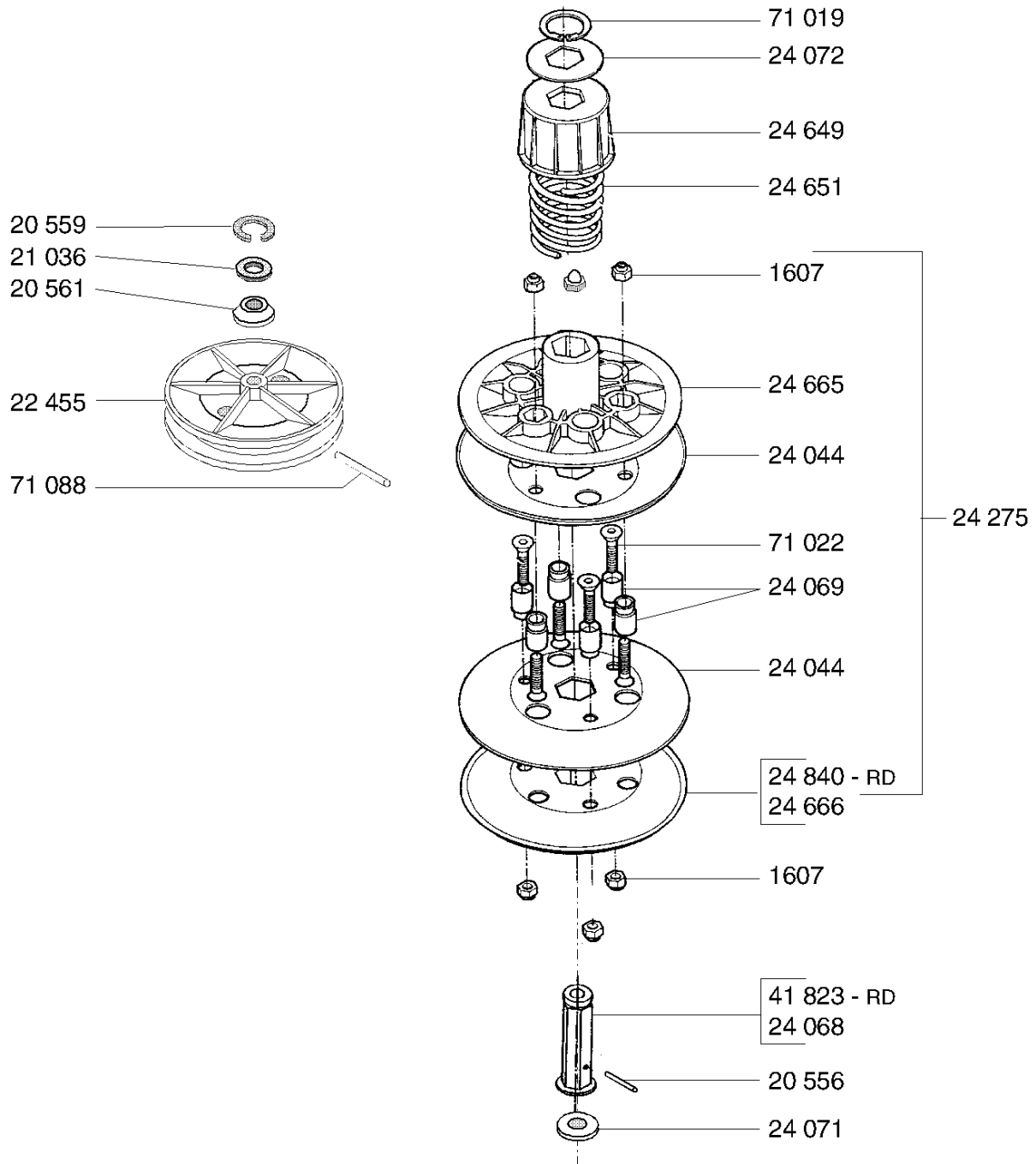
## Variateur

- 24 977 (Kit CFT)
- 24 979 (Kit STD)

# Réducteur à disques NG 51

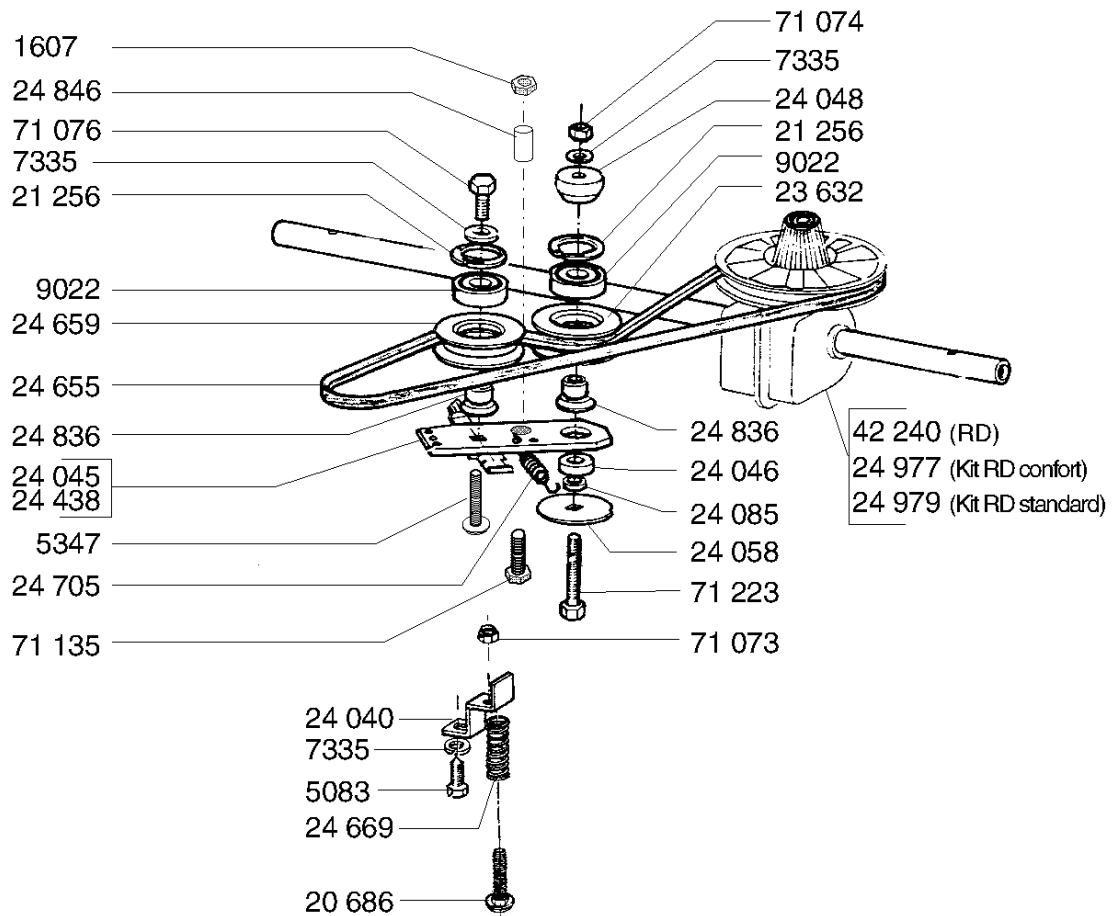


## Réducteurs 51 à clabots ou disques

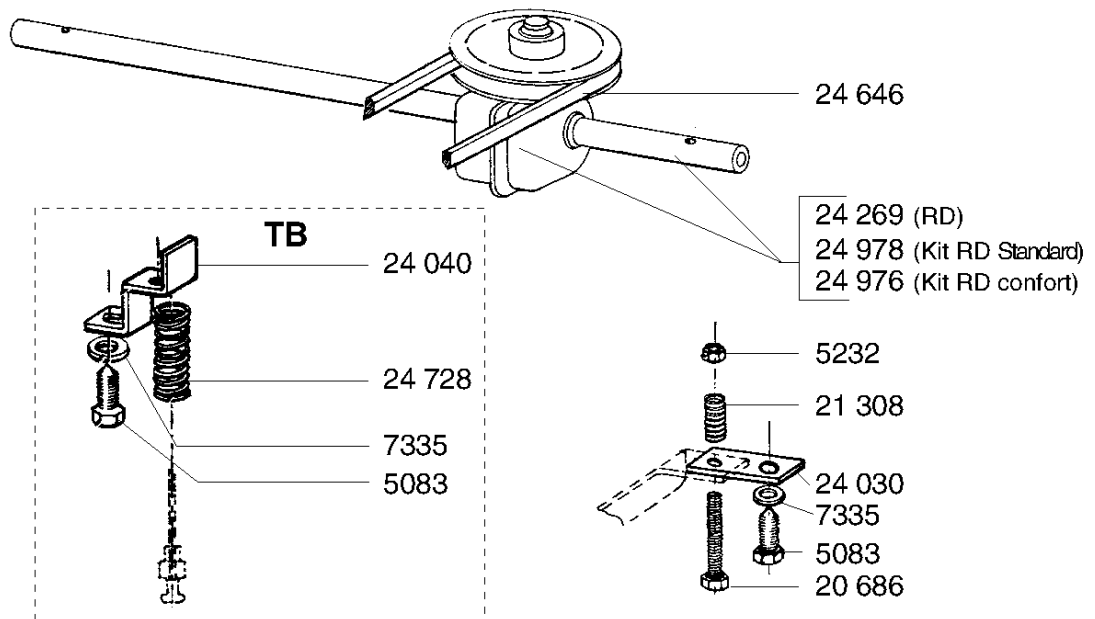




**TA - TAE - TAF - TAK - TAKF - TBF - TEB 94 - TEBF - THF - TKO - TKOE - TS**



**TB - TEB - TEBE - TEBF - TEC - TECO - TS 93**



# TU51

