

Parts Catalog

MODEL

FC290V-X

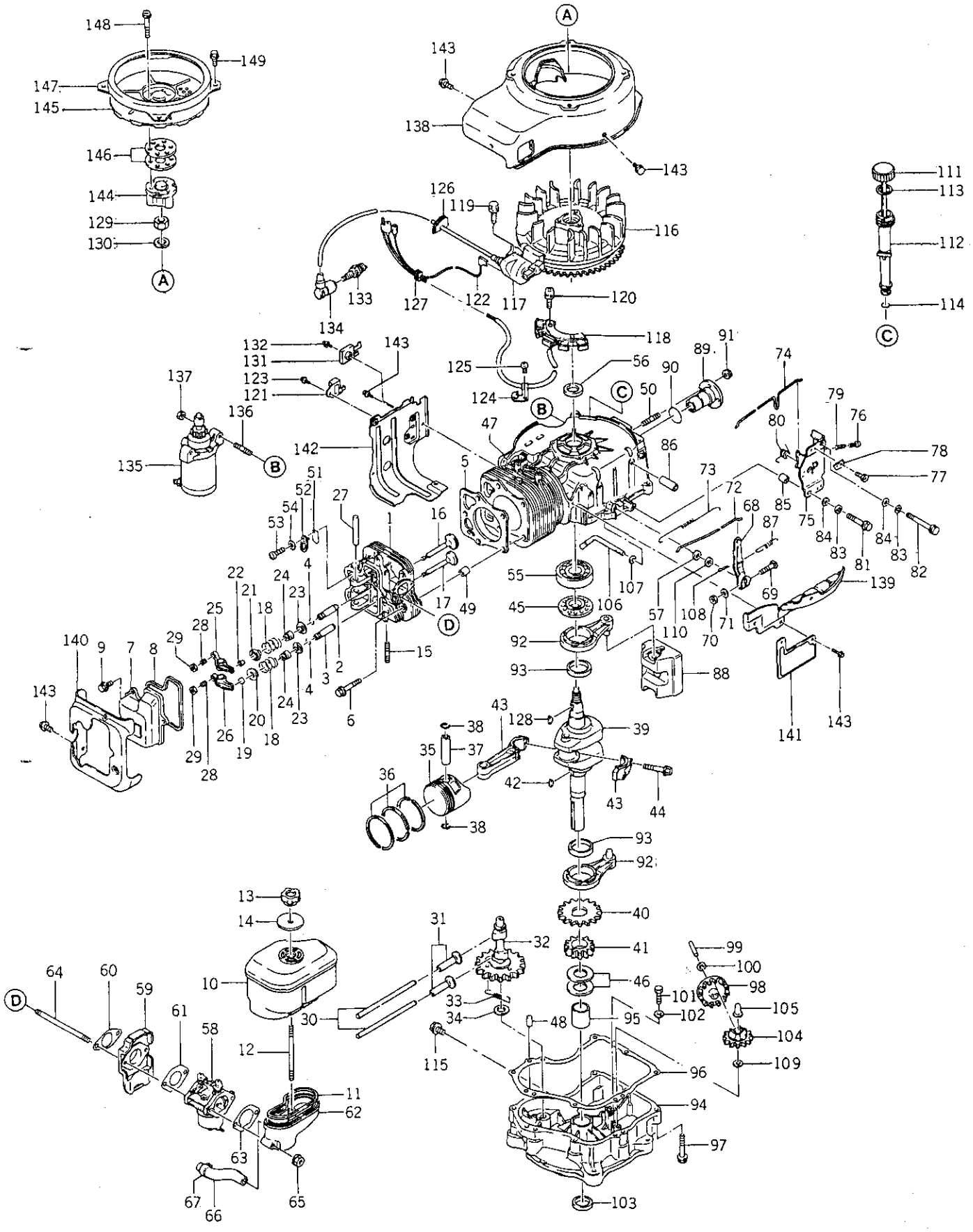
PRODUCT CODE

FC290V-AS02, BS02



© KAWASAKI HEAVY INDUSTRIES, LTD.
ENGINE DIVISION
870730 Printed in Japan

FC290V-X FC290V-AS02,BS02



FC290V-X FC290V-AS02,BS02(A,B)

Ref.No.	Part No.	Part Name	Quantity				Remarks
			A	B			
1	11008-6002	CYLINDER HEAD COMP	1	1			
2	49002-2075	•GUIDE, valve (IN)	1	1			
3	49002-2076	•GUIDE, valve (EX)	1	1			
4	92036-023	•RING, snap	2	2			
5	11004-2086	GASKET, head	1	1			
6	130T0845	BOLT (8x45)	5	5			
7	11022-2054	CASE, rocker	1	1			
8	11009-2421	GASKET, rocker case	1	1			
9	130B0614	BOLT (6x14)	3	3			
10	11010-2248	AIR FILTER ASSY	1	1			Fig. A-1
11	11009-2422	GASKET, air filter	1	1			
12	171G0690	STUD	1	1			
13	92015-2138	NUT	1	1			
14	92022-2204	WASHER	1	1			
15	171G0816	STUD	2				
	171G0818	STUD		2			
16	12004-2084	VALVE, intake	1	1			
17	12005-2068	VALVE, exhaust	1	1			
18	49078-2060	SPRING, valve	2	2			
19	11012-2189	CAP, valve	1	1			
20	12009-2058	RETAINER, spring	1	1			
21	12009-2060	RETAINER, spring	1	1			
22	12011-2052	COLLET	2	2			
23	16007-2052	SEAT, spring	2	2			
24	92049-2100	SEAL, oil	2	2			
25	12016-2055	ARM, rocker	1	1			
26	12016-2054	ARM, rocker	1	1			
27	12020-2057	SHAFT, rocker	1	1			
28	92009-2182	SCREW	2	2			
29	92015-2139	NUT	2	2			
30	13116-2054	ROD, push	2	2			
31	12032-2060	TAPPET	2	2			
32	49118-2054	CAM SHAFT COMP	1	1			
33	92081-2297	•SPRING	1	1			
34	92025-2162	SHIM	AR	AR			t=1.60
	92025-2163	SHIM	AR	AR			t=1.65
	92025-2164	SHIM	AR	AR			t=1.70
	92025-2165	SHIM	AR	AR			t=1.75
	92025-2166	SHIM	AR	AR			t=1.80
	92025-2167	SHIM	AR	AR			t=1.85
	92025-2208	SHIM	AR	AR			t=1.90
	92025-2209	SHIM	AR	AR			t=1.95

FC290V-X FC290V-AS02,BS02(A,B)

Ref.No.	Part No.	Part Name	Quantity				Remarks
			A	B			
35	13001-2089	PISTON	1	1			S.T.D
	13029-2080	PISTON	AR	AR			O/S 0.25mm
	13029-2081	PISTON	AR	AR			O/S 0.50mm
	13027-2055	PISTON	AR	AR			O/S 0.75mm
36	13008-6007	PISTON RING SET	1	1			S.T.D
	13025-2073	PISTON RING SET	AR	AR			O/S 0.25mm
	13025-2074	PISTON RING SET	AR	AR			O/S 0.50mm
	13024-2051	PISTON RING SET	AR	AR			O/S 0.75mm
37	13002-2069	PIN, piston	1	1			
38	92036-008	RING, snap	2	2			
39	13037-2269	SHAFT, crank	1	1			
40	59051-2097	GEAR, spur	1	1			
41	59056-2088	GEAR, helical	1	1			
42	92038-2074	KEY	1	1			
43	13251-6009	CONNECTING ROD ASSY	1	1			S.T.D
	13251-6016	CONNECTING ROD ASSY	AR	AR			U/S 0.50mm
44	315601-3245A	•BOLT, connecting rod	2	2			
45	92026-2052	SPACER	1	1			
46	92025-2168	SHIM	AR	AR			t=1.13
	92025-2169	SHIM	AR	AR			t=1.18
	92025-2170	SHIM	AR	AR			t=1.23
	92025-2171	SHIM	AR	AR			t=1.28
	92025-2172	SHIM	AR	AR			t=1.33
	92025-2173	SHIM	AR	AR			t=1.38
	92025-2174	SHIM	AR	AR			t=1.43
	92025-2175	SHIM	AR	AR			t=1.48
	92025-2207	SHIM	AR	AR			t=1.53
	47	49120-2138	CRANK CASE COMP	1	1		
48	92043-2111	PIN	2				
	92043-1263	PIN		2			
49	92043-1037	PIN	2	2			
50	92004-2083	STUD	4	4			
51	16126-2107	VALVE	1	1			
52	13169-2414	PLATE	1	1			
53	315801-6732A	SCREW	1	1			
54	410B0500	WASHER	1	1			
55	601A6306	BEARING, ball (6306)	1	1			
56	316470-4231-00	SEAL, oil	1	1			
57	92049-2097	SEAL, oil	1	1			
58	15001-2618	CARBURETOR ASSY	1				Fig. C-1
	15001-2729	CARBURETOR ASSY		1			Fig. C-1
59	16073-2095	INSULATOR	1	1			

FC290V-X FC290V-AS02,BS02(A,B)

Ref.No.	Part No.	Part Name	Quantity				Remarks
			A	B			
60	11009-2423	GASKET	1	1			
61	11009-2424	GASKET	1	1			
62	16060-2113	PIPE, intake	1	1			
63	11009-2425	GASKET	1	1			
64	92004-2093	STUD	2	2			
65	92015-1193	NUT	2	2			
66	92059-2170	TUBE, breather	1	1			
67	92037-1104	CLAMP	1	1			
68	21187-2051	ARM ASSY	1	1			
69	92002-2269	BOLT	1	1			
70	311B0600	NUT (6mm)	1	1			
71	411B0600	WASHER	1	1			
72	16171-2051	LINK, governor	1	1			
73	92081-2299	SPRING, link	1	1			
74	16169-2077	LINK, choke	1	1			
75	49113-2067	CONTROL PANEL ASSY	1	1			
76	214B0425	•SCREW (4x25)	1	1			
77	310701-1225A	•BOLT	1	1			
78	92037-2020	•CLAMP	1	1			
79	314401-5321B	•SPRING	1	1			
80	92081-2316	•SPRING	1	1			
81	112B0630	BOLT (6x30)	1	1			
82	112B0655	BOLT (6x55)	1	1			
83	461F0600A	WASHER, spring	2	2			
84	311509-3595-00	WASHER	2	2			
85	92027-2088	COLLAR	1	1			
86	92027-2089	COLLAR	1	1			
87	92081-2300	SPRING	1	1			
88	13042-6003	WEIGHT COMP	1	1			
89	13107-2088	SHAFT	1	1			
90	92055-2072	O-RING	1	1			
91	92015-1193	NUT	4	4			
92	46102-6003	ROD ASSY	2	2			
93	92141-2090	•BEARING, plain	2	2			
94	49015-6008	CRANK CASE COVER COMP	1	1			
95	92141-2091	•BEARING, plane	1	1			
96	11009-2426	GASKET	1	1			
97	130T0845	BOLT (8x45)	8	8			
98	49073-2053	SLINGER, oil	1	1			
99	13107-2089	SHAFT	1	1			
100	3145V1-7283A	WASHER	1	1			
101	187B0512	BOLT (5x12)	1	1			

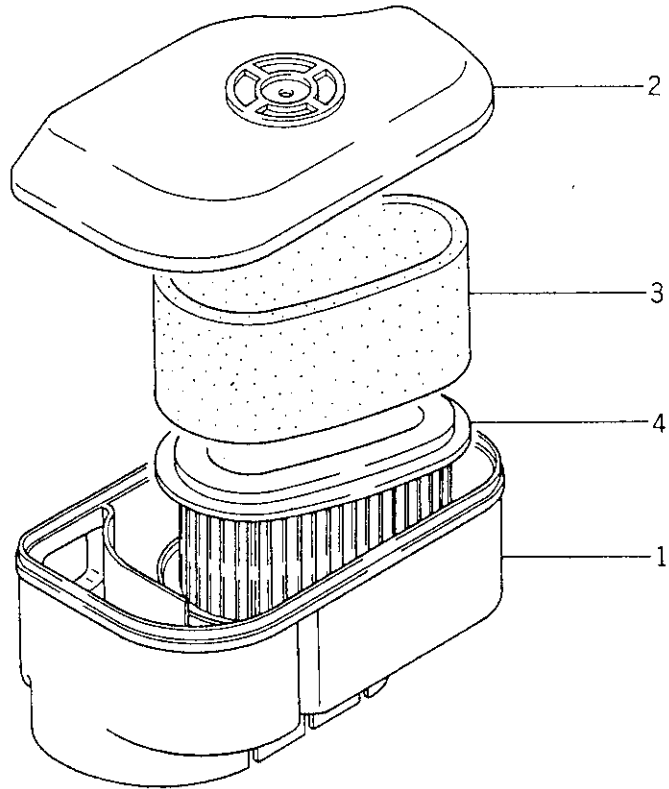
FC290V-X FC290V-AS02,BS02(A,B)

Ref.No.	Part No.	Part Name	Quantity				Remarks
			A	B			
102	3145V1-7281A	WASHER	1	1			
103	92049-2101	SEAL, oil	1	1			
104	49110-2069	GOVERNOR ASSY	1	1			
105	42036-2060	SLEEVE, governor	1	1			
106	39003-2063	ARM, pivot	1	1			
107	410B0600	WASHER	1	1			
108	554A0600	PIN, snap	1	1			
109	92022-2135	WASHER	1	1			
110	92022-2222	WASHER	1	1			
111	52005-2069	GAUGE, oil	1	1			
112	59231-2067	FILLER	1	1			
113	11009-2346	GASKET	1	1			
114	670D2016	O-RING	1	1			
115	92066-2097	PLUG, drain	1	1			
116	21193-2055	FLYWHEEL ASSY	1	1			
117	21121-2058	COIL, ignition	1	1			
118	59031-2066	COIL, charging	1	1			
119	130B0520	BOLT (5x20)	2	2			
120	224B0620	SCREW (6x20)	2	2			
121	21119-2101	IGNITER	1	1			
122	26011-2104	WIRE, lead	1	1			
123	224B0408	SCREW (4x8)	1	1			
124	92037-2177	CLAMP	1	1			
125	315801-6732A	SCREW	1	1			
126	92071-2112	GROMMET	1	1			
127	92071-2099	GROMMET	1	1			
128	510A5100	KEY	1	1			
129	314G1600A	NUT (16mm)	1	1			
130	92022-2205	WASHER	1	1			
131	21061-2059	RECTIFIER	1	1			
132	235B0416	SCREW (4x16)	1	1			
133	92070-2075	PLUG, spark	1	1			
134	21130-2060	CAP, plug	1	1			
135	21163-2068	ELECTRIC STARTER ASSY	1	1			Fig. S-1
136	172G0840	STUD	2	2			
137	92015-1143	NUT	2	2			
138	59066-2360-9H	HOUSING, fan	1	1			
139	59066-2278-9H	HOUSING, fan	1	1			
140	49089-2237-9H	SHROUD	1	1			
141	49089-2239-9H	SHROUD	1	1			
142	49089-2238-9H	SHROUD	1	1			
143	130G0612	BOLT (6x12)	13	13			

FC290V-X FC290V-AS02,BS02(A,B)

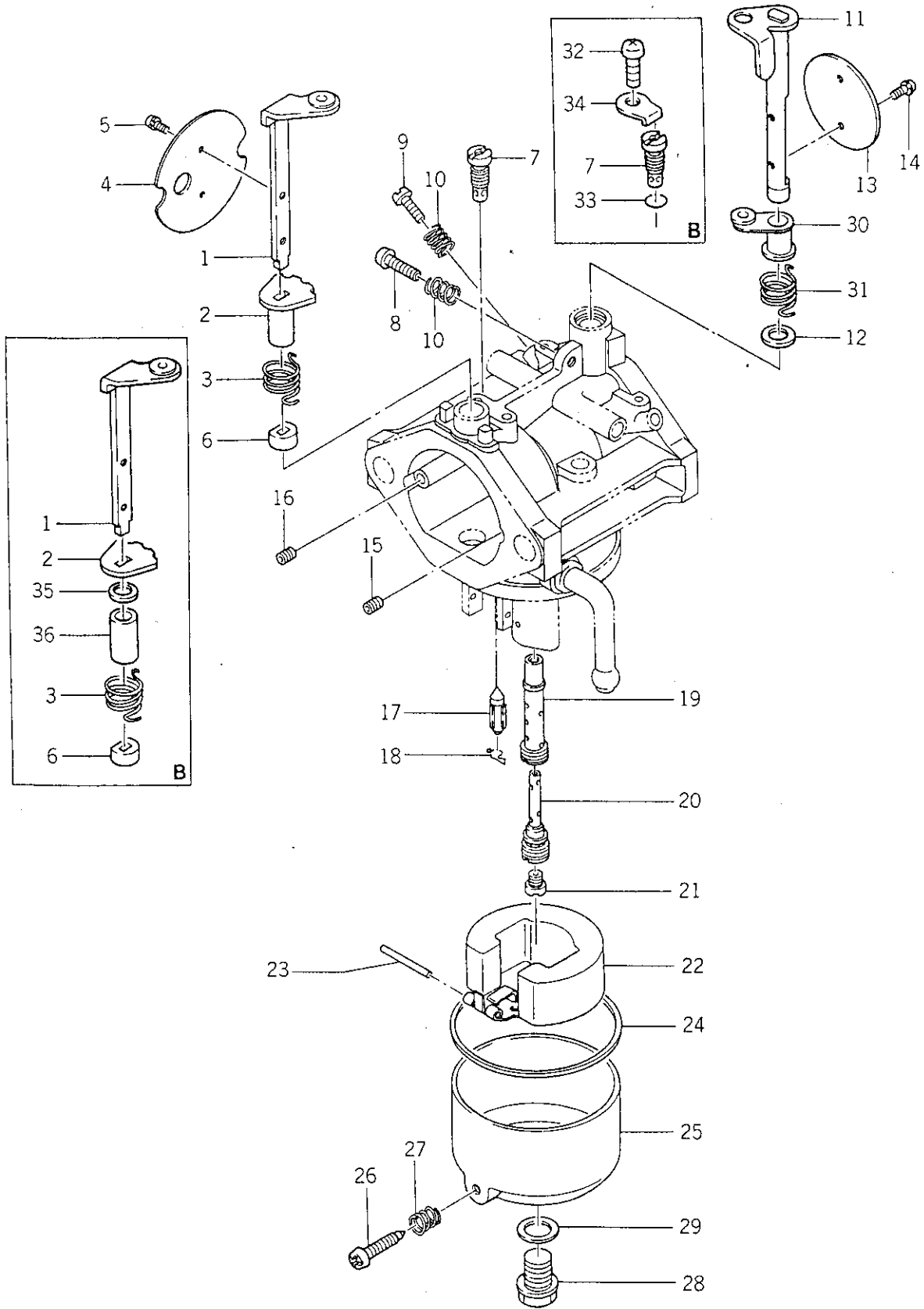
Ref.No.	Part No.	Part Name	Quantity				Remarks
			A	B			
144	11044-2073	BRACKET	1	1			
145	14037-2090-9H	SCREEN	1	1			
146	92025-2176	SHIM	AR	AR			t=1.2
147	55020-2070-9H	GUARD	1	1			
148	224B0645	SCREW (6x45)	3	3			
149	130B0610	BOLT (6x10)	4	4			

Fig. A-1 AIR FILTER



Ref.No.	Part No.	Part Name	Quantity					Remarks
			A	B				
	11010-2248	AIR FILTER ASSY	1	1				
A-1- 1	11011-2152	•CASE, air filter	1	1				
A-1- 2	11012-2183	•CAP, air filter	1	1				
A-1- 3	11013-2092	•ELEMENT	1	1				
A-1- 4	11013-2093	•ELEMENT	1	1				

Fig. C-1 CARBURETOR



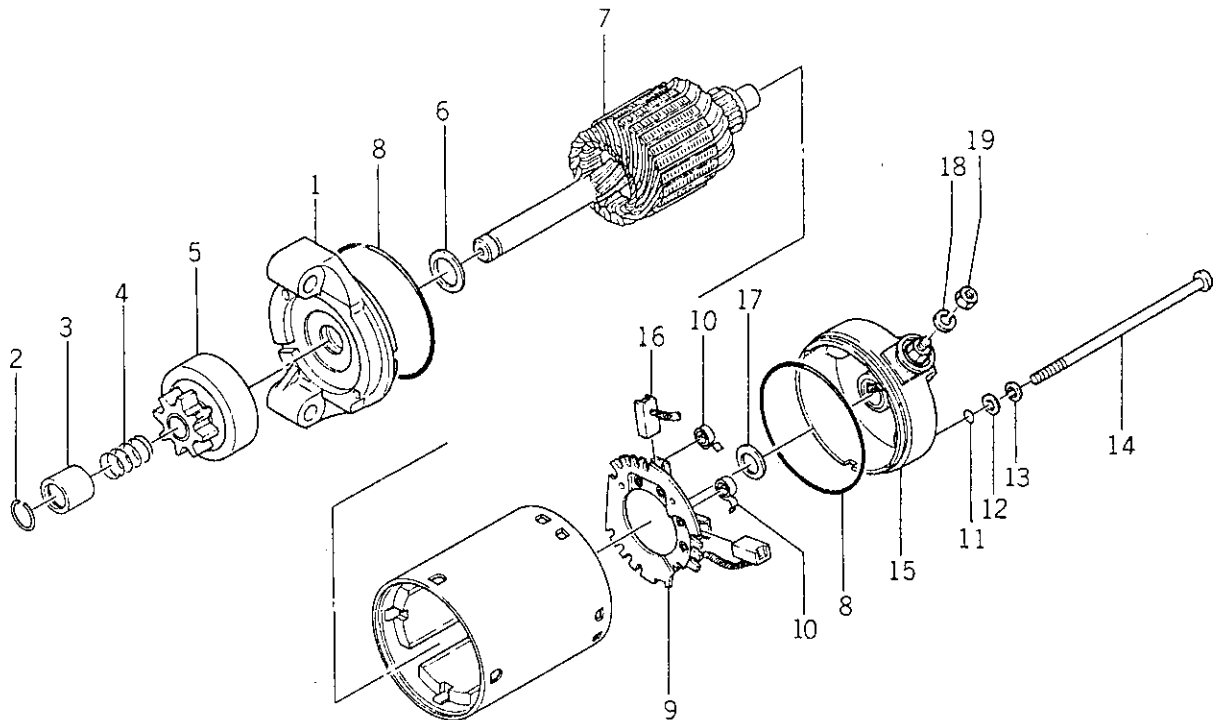
FC290V-B502

Fig. C-1 CARBURETOR

Ref.No.	Part No.	Part Name	Quantity				Remarks
			A	B			
	15001-2618	CARBURETOR ASSY	1				
	15001-2729	CARBURETOR ASSY		1			
C-1- 1	16041-2129	•SHAFT, choke	1	1			
C-1- 2	92027-2087	•COLLAR	1				
	92143-2133	•COLLAR		1			
C-1- 3	92081-2303	•SPRING	1	1			
C-1- 4	16126-2112	•VALVE, choke	1	1			
C-1- 5	314572-6137A	•SCREW	2	2			
C-1- 6	314598-6138A	•RING	1				
	92143-2132	•RING		1			
C-1- 7	317290-6112-00	•JET, pilot (#50)	1				
	92064-2064	•JET, pilot (#50)		1			
C-1- 8	214B0412A	•SCREW (4x12)	1	1			
C-1- 9	16014-2057	•SCREW, adjuster	1	1			
C-1-10	313122-6116-00	•SPRING	2	2			
C-1-11	16041-2130	•SHAFT, throttle	1	1			
C-1-12	316626-6206A	•SEAL	1	1			
C-1-13	16025-2090	•VALVE, throttle (#110)	1	1			
C-1-14	316550-6137A	•SCREW	2	2			
C-1-15	16035-2060	•JET, air (#1.7)	1	1			
C-1-16	315825-6113A	•JET, pilot air (#1.1)	1	1			
C-1-17	16030-2067	•VALVE, needle	1	1			
C-1-18	314595-6134A	•CLIP	1				
	315721-6134A	•CLIP		1			
C-1-19	49121-2086	•NOZZLE, main (#12C)	1	1			
C-1-20	49123-2053	•PIPE, bleed	1	1			
C-1-21	92063-2114	•JET, main (#97.5)	1	1			
C-1-22	315801-6126A	•FLOAT	1				
	16031-2066	•FLOAT		1			
C-1-23	314499-6127A	•PIN, float	1	1			
C-1-24	313650-6128-00	•GASKET	1	1			
C-1-25	16020-2051	•FLOAT CHAMBER ASSY	1				
	16020-2094	•FLOAT CHAMBER ASSY		1			
C-1-26	315470-6133A	••SCREW, drain	1	1			
C-1-27	313122-6116-00	••SPRING	1	1			
C-1-28	314486-6143A	•BOLT	1	1			
C-1-29	318190-6159-00	•WASHER	1	1			
C-1-30	92027-2025	•COLLAR	1	1			
C-1-31	92144-2002	•SPRING	1	1			
C-1-32	92009-2244	•SCREW		1			
C-1-33	16038-024	•O-RING		1			
C-1-34	13183-2252	•PLATE		1			
C-1-35	92093-2081	•SEAL		1			
C-1-36	92143-2134	•RING		1			

FC2900-B502

Fig. S-1 ELECTRIC STARTER



Ref.No.	Part No.	Part Name	Quantity				Remarks
			A	B			
	21163-2068	ELECTRIC STARTER ASSY	1	1			
S-1- 1	16146-2079	•COVER ASSY	1	1			
S-1- 2	92033-2076	•RING, snap	1	1			
S-1- 3	92027-2085	•COLLAR	1	1			
S-1- 4	92081-2327	•SPRING	1	1			
S-1- 5	13081-2086	•CLUTCH ASSY	1	1			
S-1- 6	92022-2201	•WASHER	1	1			
S-1- 7	21080-2055	•ARMATURE	1	1			
S-1- 8	92055-1260	•O-RING	2	2			
S-1- 9	14079-2055	•BRUSH HOLDER ASSY	1	1			
S-1-10	21040-1051	••SPRING	2	2			
S-1-11	92055-1261	•O-RING	2	2			
S-1-12	92022-1623	•WASHER	2	2			
S-1-13	92022-1622	•WASHER	2	2			
S-1-14	92002-2281	•BOLT	2	2			
S-1-15	16146-2080	•COVER ASSY	1	1			
S-1-16	21039-2057	••BRUSH	1	1			
S-1-17	92022-2200	•WASHER	1	1			
S-1-18	461F0600A	•WASHER, spring	1	1			
S-1-19	92015-2151	•NUT	1	1			