



Parts Manual

Mfg. No: 42568x59A
Lawn Tractor (1997)

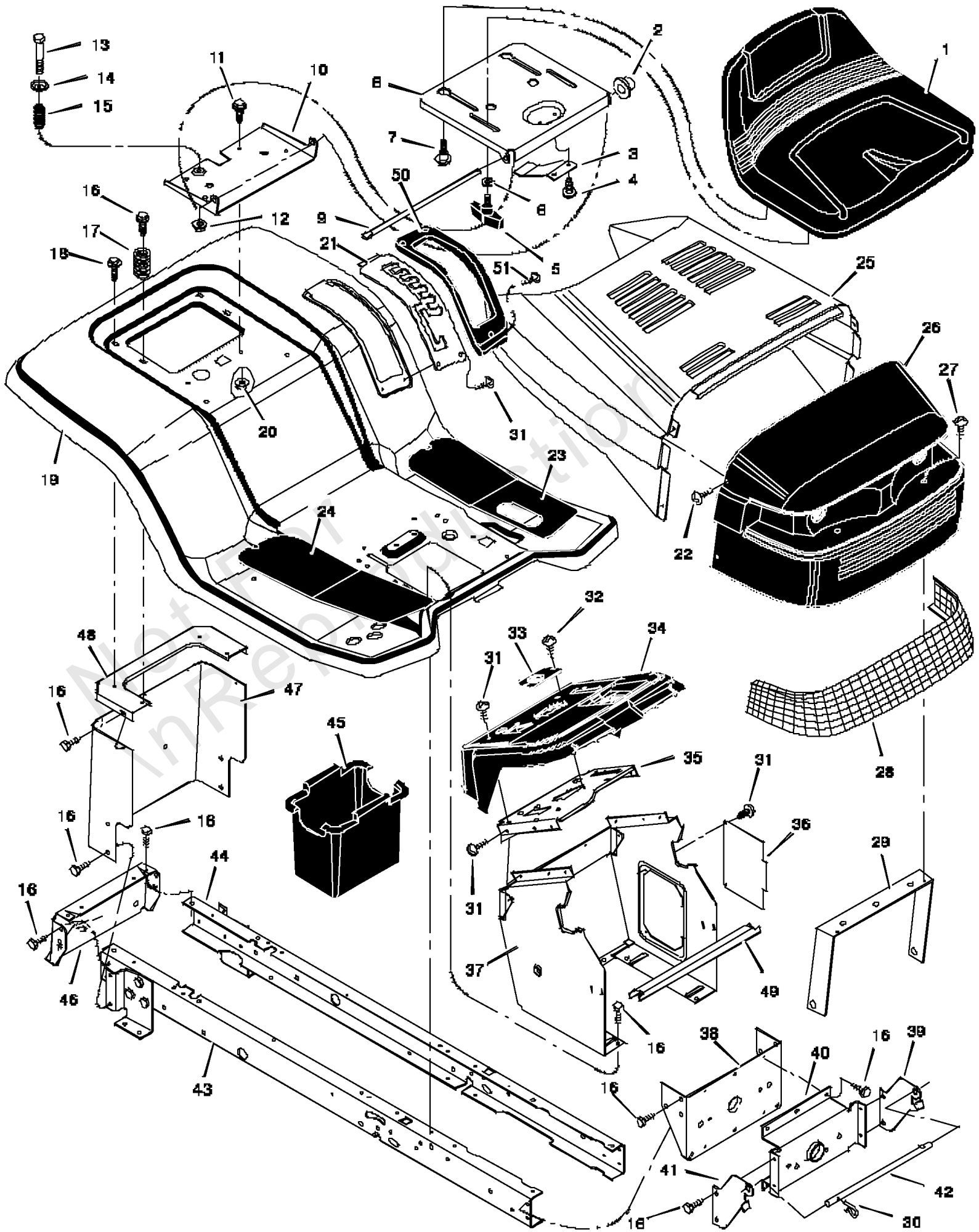
Model Components	Page
Chassis & Hood.....	4
Electrical System.....	8
Engine Mount.....	10
Motion Drive.....	12
Mower Housing.....	16
Mower Housing Suspension.....	20
Steering.....	22
Torque Specification Chart.....	24

Not For
In Reproduction

Chassis & Hood

Note: Unless noted otherwise, use the standard torque specifications

Mfg. No: 42568x59A



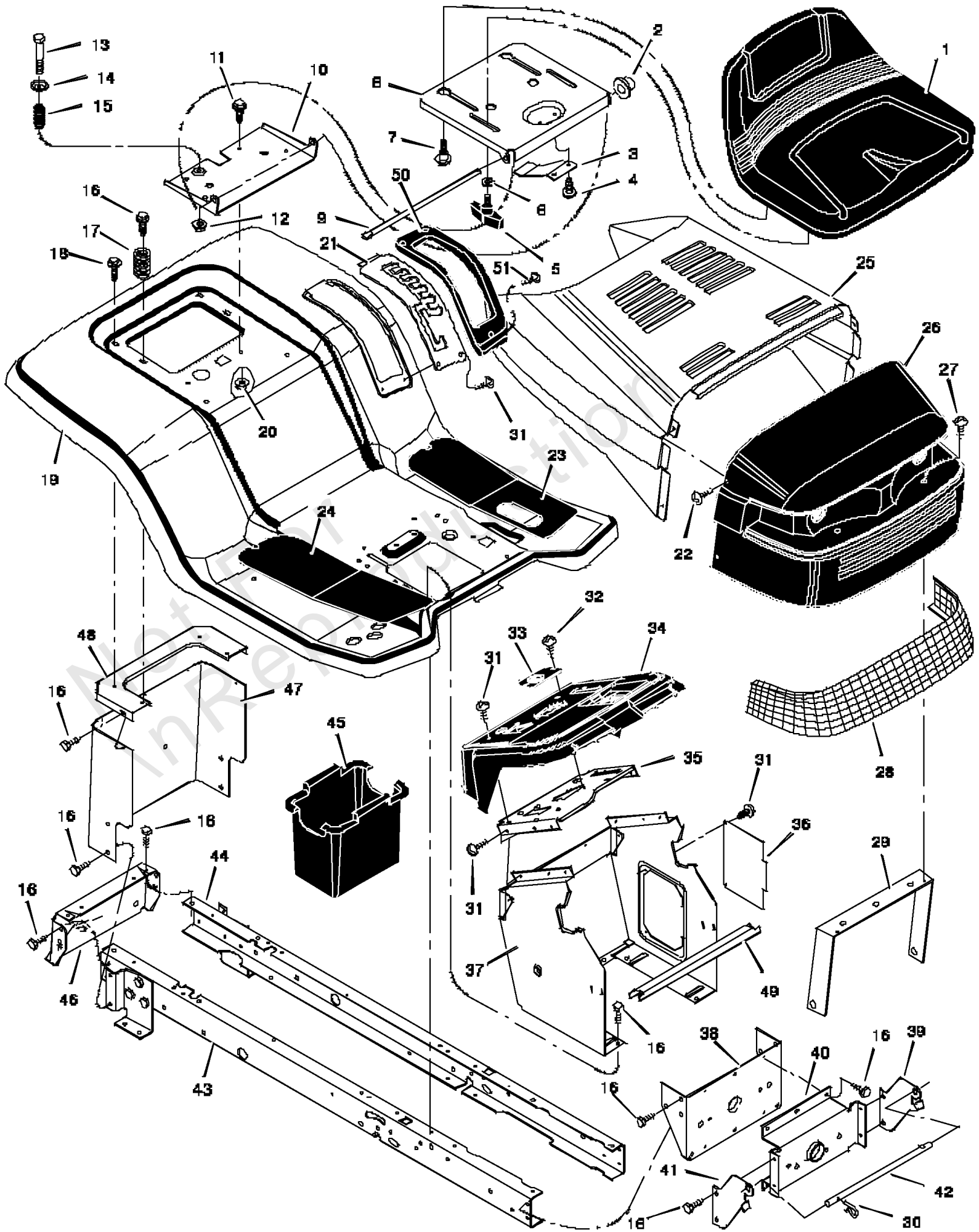
Chassis & Hood

REF NO	PART NO	QTY	DESCRIPTION
1	094803		Seat
2	028X23MA		Cap, Push On
3	094057MA		Spring
4	26X229MA		Screw
5	094160		Bolt, Wing
6	017X47MA		Washer
7	009X56MA		Bolt, Shoulder
8	94154E701		Support, Seat
9	094156ZMA		Rod, Pivot
10	94153E701		Bracket, Pivot
11	001X45MA		Bolt
12	015X89MA		Nut
13	009X55MA		Bolt, Shoulder
14	094155 Z		Washer
15	164X31		Spring
16	26X249MA		Screw
17	26X263MA		Screw
18	164X30MA		Spring
19	094489E245		Deck, Seat
20	015X88MA		Nut
21	94886E701		Plate, Index
22	009X47MA		Screw
23	095437		Mat, Left
24	095438		Mat, Right
25	093215E245MA		Hood
26	93243E717		Grille Assembly -(Includes Lens)
27	26X239MA		Screw
28	093139MA		Lens
29	093190MA		Brace, Grille
30	0031X4MA		Pin, Hair
31	26X270		Screw
32	26X238MA		Screw
33	094219MA		Bearing, Steering
34	095034		Dash
35	94221E701		Plate, Dash
36	93007E717		Panel, Access
37	94220E717		Support, Dash
38	094013E701MA		Bracket, Rear Hanger
39	94213E701		Support, Left Grille
40	094007E701MA		Axle, Hanger
41	94212E701		Support, Right Grille
42	093137 Z		Rod, Pivot
43	94000E701		Frame, Right
44	94001 E701		Frame, Left
45	094069		Container, Battery
46	94002E717MA		Plate, Hitch
47	94187E717		Panel, Rear
48	94186		Plate, Rear
49	94222E701		Channel
50	094490		Cover

Chassis & Hood

Note: Unless noted otherwise, use the standard torque specifications

Mfg. No: 42568x59A



Chassis & Hood

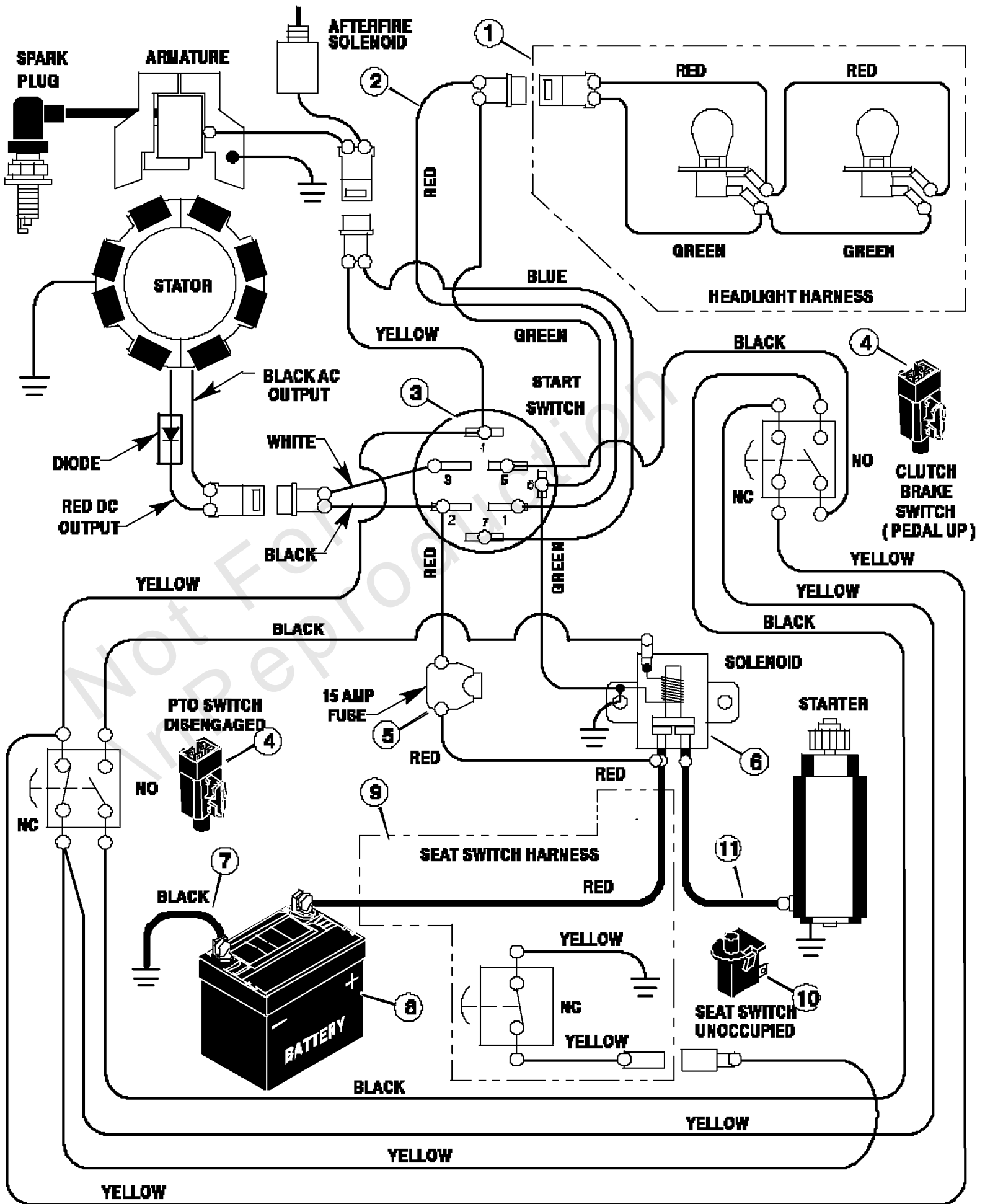
REF NO	PART NO	QTY	DESCRIPTION
51	26X284MA		Screw
--	44X7114		Decal, Right Hood
--	44X7115		Decal, Left Hood
--	44X6815MA		Decal, Warning
--	F-97818		Book, Instruction
--	F-97819		Book, Instruction
--	F-97820		Parts List

Not For In Reproduction

Electrical System

Note: Unless noted otherwise, use the standard torque specifications

Mfg. No: 42568x59A



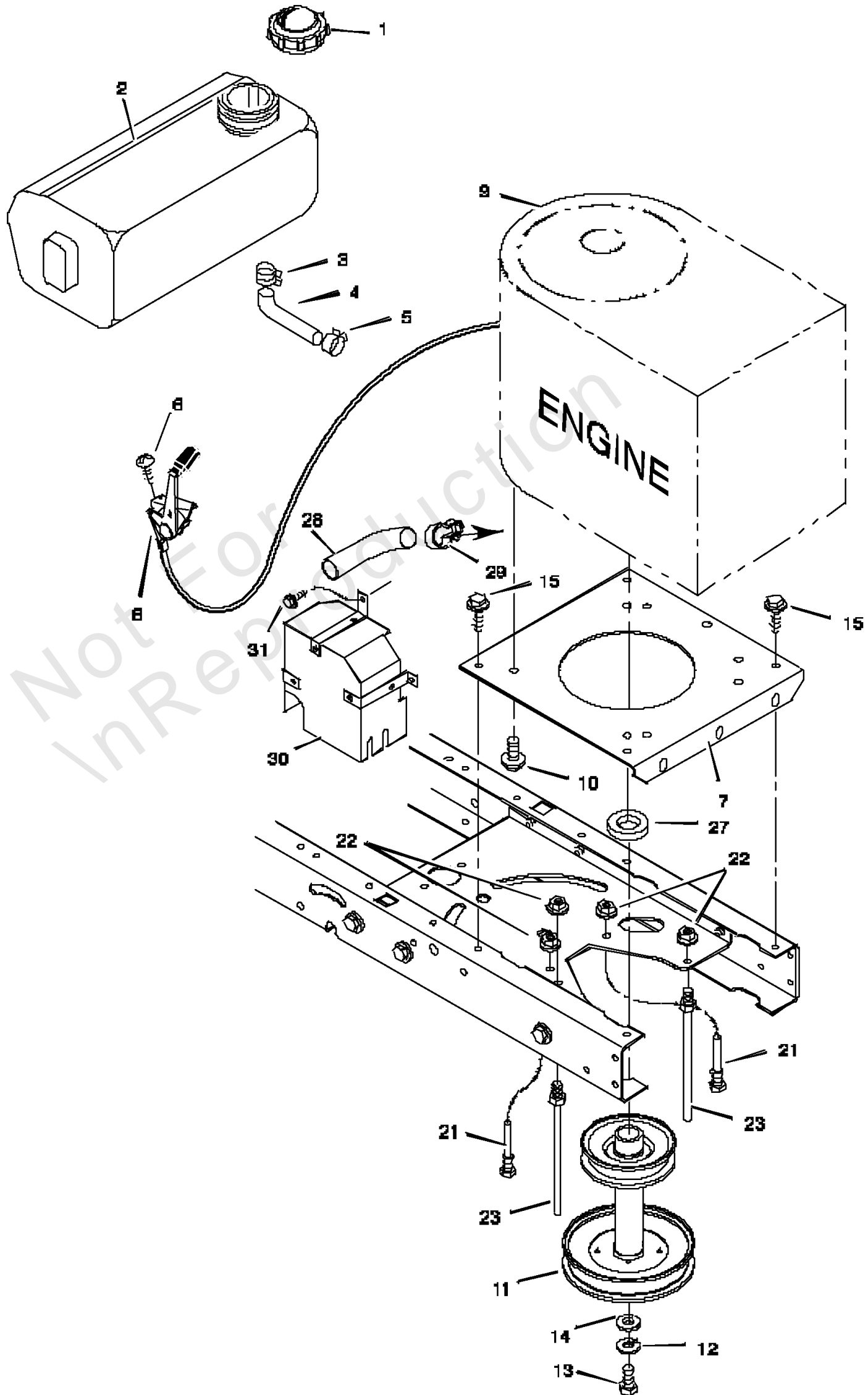
Electrical System

REF NO	PART NO	QTY	DESCRIPTION
1	250X68		Harness, Light Wire
--	092372		Socket, Light
--	090084MA		Bulb, Light
2	250X76		Harness, Chassis Wire
3	092556MA		Switch, Ignition
--	020729		Key, Ignition
--	091489MA		Nut, Hex
--	091488		Cap, Ignition
4	094136MA		Switch, Limit
5	054212		Fuse
--	407078MA		Holder, Fuse
6	094613		Solenoid
--	26X229MA		Screw, Mounting
--	15X116MA		Locknut
7	024X32MA		Cable, Battery Ground
--	26X213MA		Screw, Ground Cable
8	021075		Battery
--	093292		Acid, Battery (Electrolyte)
--	002X82MA		Bolt, Carriage
--	014X79MA		Wingnut
9	250X67MA		Harness, Seat Switch Wire
10	094159MA		Switch, Seat Sensor
11	024X31MA		Cable

Engine Mount

Note: Unless noted otherwise, use the standard torque specifications

Mfg. No: 42568x59A



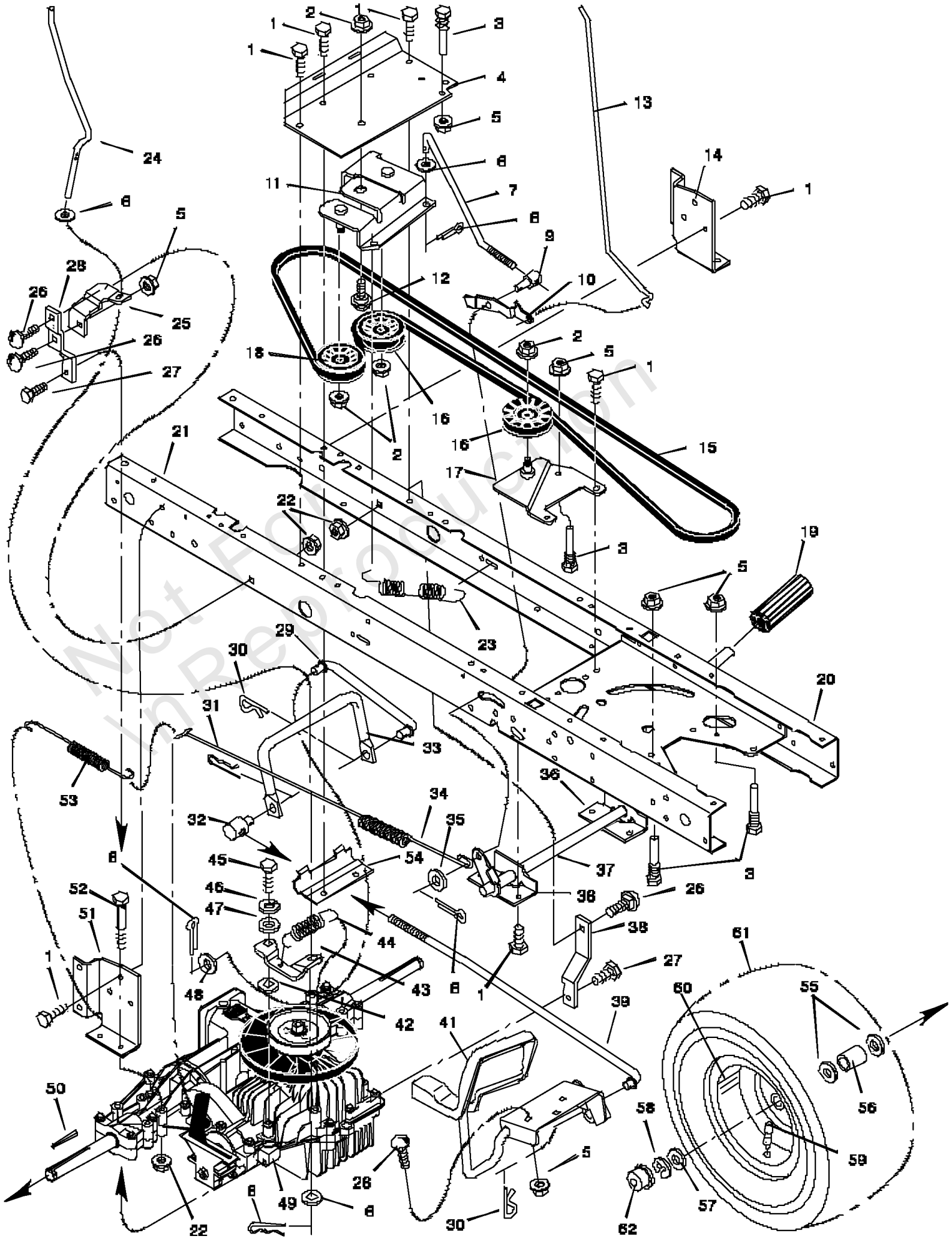
Engine Mount

REF NO	PART NO	QTY	DESCRIPTION
1	092317MA		Fuel Cap
2	092597		Fuel Tank
3	091174		Hose Clamp
4	090671MA		Fuel Line
5	091174		Hose Clamp
6	26X201MA		Screw
7	94006E701		Plate, Engine
8	092371MA		Throttle Control
9	-----		Engine
10	0025X7MA		Bolt, Engine Mount
11	094407 Z		Stack Pulley Assembly
12	019X35MA		Lockwasher
13	01X140MA		Bolt, Hex
14	17X170MA		Washer
15	26X249MA		Screw
21	93349 Z		Guide, Belt
22	015X79MA		Nut, Flange
23	94066 Z		Guide, Belt
27	093077MA		Spacer
28	092855		Pipe, Exhaust
29	092558MA		Clamp
30	92550SE		Shield, Heat
31	26X263MA		Screw

Motion Drive

Note: Unless noted otherwise, use the standard torque specifications

Mfg. No: 42568x59A



Motion Drive

REF NO	PART NO	QTY	DESCRIPTION
1	26X249MA		Screw
2	015X84MA		Nut, Flange
3	093349MA		Guide, Belt
4	94431E701		Bracket, Idler
5	015X79MA		Locknut
6	017X47MA		Washer
7	094417 Z		Rod, Clutch
8	030X20MA		Pin, Cotter
9	094646		Adjuster
10	094045 Z		Latch, Parking Brake
11	094411 Z		Bracket Assembly, Idler
12	009X39MA		Bolt, Shoulder
13	094152 Z		Rod, Parking Brake
14	094185E701MA		Bracket, Transaxle
15	037X61AMA		Belt
16	091179MA		Pulley, Idler
17	94409E701		Arm Assembly, Idler
18	091178		Pulley, Idler
19	021544MA		Pedal
20	94001 E701		Frame, Left
21	94000E701		Frame, Right
22	015X88MA		Nut, Flange
23	165X123		Spring, Extension
24	094428 Z		Rod, Disconnect
25	94429E701		Bracket, Disconnect
26	002X53MA		Bolt, Carriage
27	26X216MA		Screw
28	94432E701		Strap, Right Torque
29	94426E701		Rod, Link
30	0031X4MA		Pin, Hair
31	0031X6MA		Pin, Hair
32	092132MA		NUT, Adjusting, 1/2-13
33	94425E701		Rod, Yoke
34	165X115MA		Spring, Extension
35	017X53MA		Washer
36	94035E701		Bracket, Pivot
37	94038E701		Lever, Clutch/Brake
38	094433E701MA		BRACKET, Torque Strap, LH
39	94424		Rod, Link
41	94422E701		Pedal, Speed Control
42	17X148MA		Washer
43	094430 Z		Arm, Disconnect
44	165X112MA		Spring
45	01X145MA		Bolt
46	018X32MA		Lockwasher
47	17X180MA		Washer
48	17X151		Washer
49	-----		Transaxle **

Footnotes:

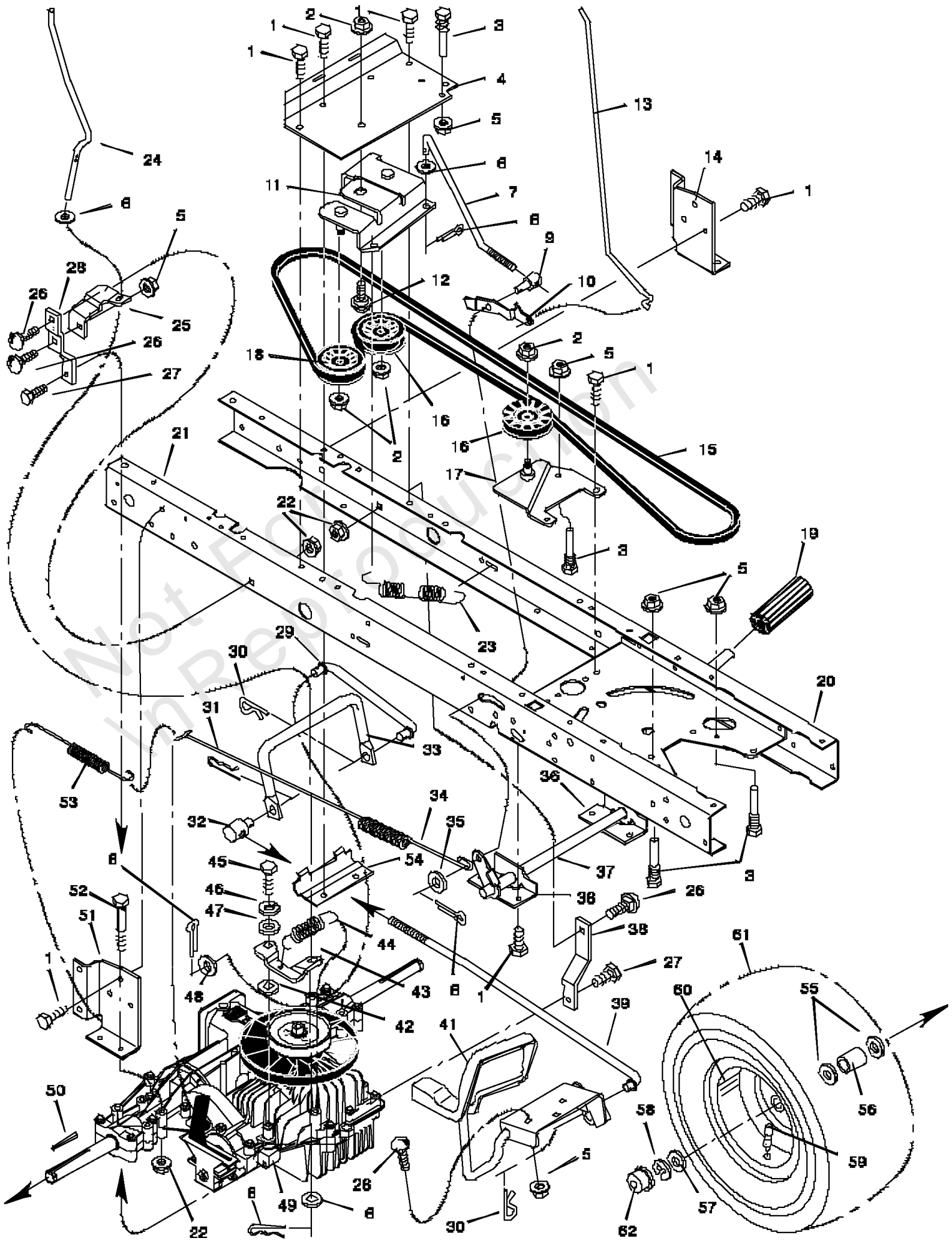
Note* When you order a tire, make sure to give the brand name of the tire so that the tread pattern on the tire will match.

Note** For information on Replacement Parts see the Central Parts Distributor on your area.

Motion Drive

Note: Unless noted otherwise, use the standard torque specifications

Mfg. No: 42568x59A



Motion Drive

REF NO	PART NO	QTY	DESCRIPTION
50	021553MA		Key, Square
51	094184E701MA		Bracket, Right Transaxle
52	01X155MA		Bolt
53	165X92MA		Spring, Extension
54	94434E701		Clamp, Transaxle
55	17X160MA		Washer
56	87X105		Spacer
57	17X195MA		Washer
58	0011X3MA		E-Ring
59	024373MA		Valve Stem
60	092290601		Wheel & Tire Assembly
61	092374MA		Tire *
--	407049MA		Tube
62	094618MA		Cap, Hub -(Optional)

Not For
In Reproduction

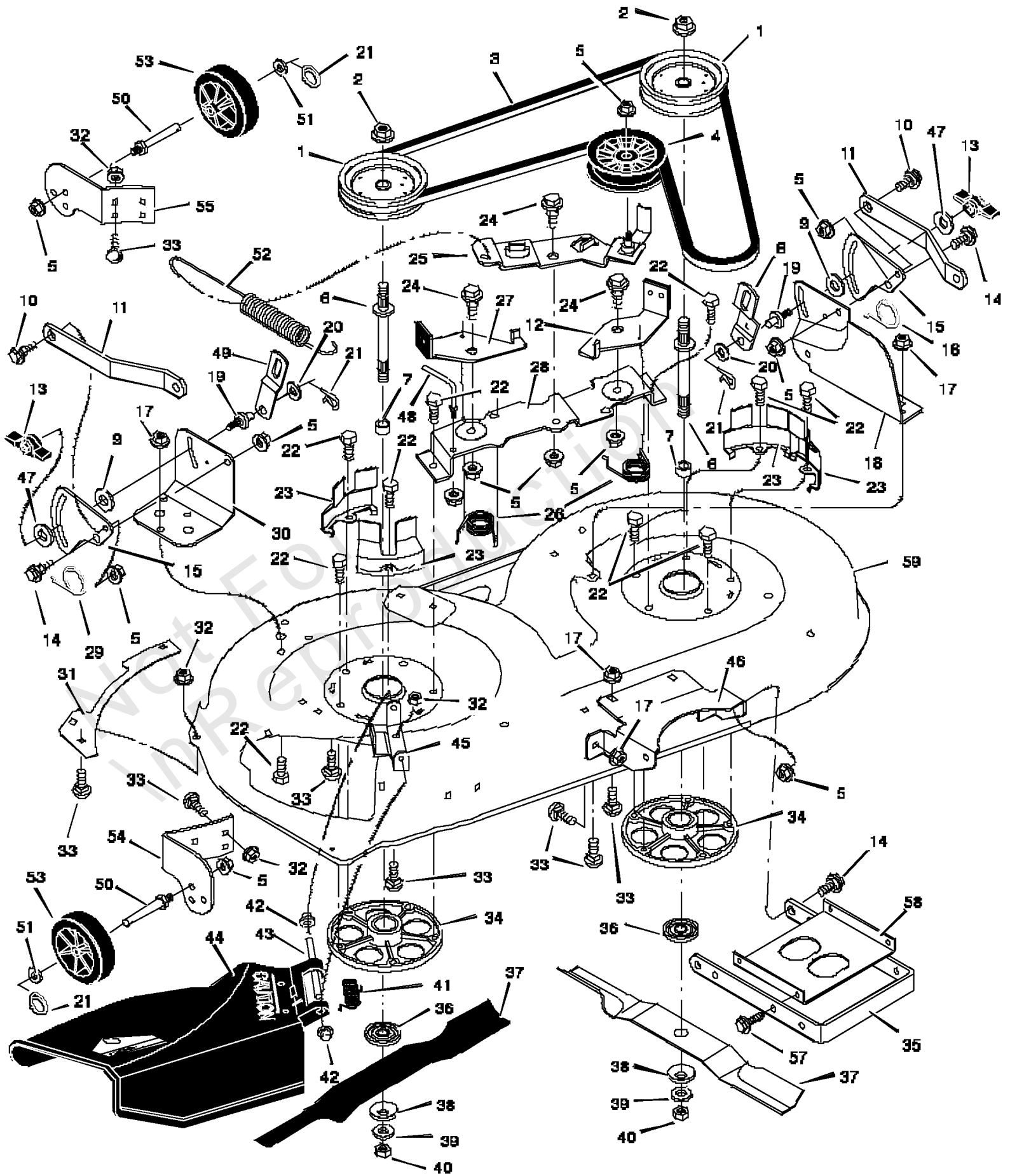
Footnotes:

Note* When you order a tire, make sure to give the brand name of the tire so that the tread pattern on the tire will match.
Note** For information on Replacement Parts see the Central Parts Distributor on your area.

Mower Housing

Note: Unless noted otherwise, use the standard torque specifications

Mfg. No: 42568x59A



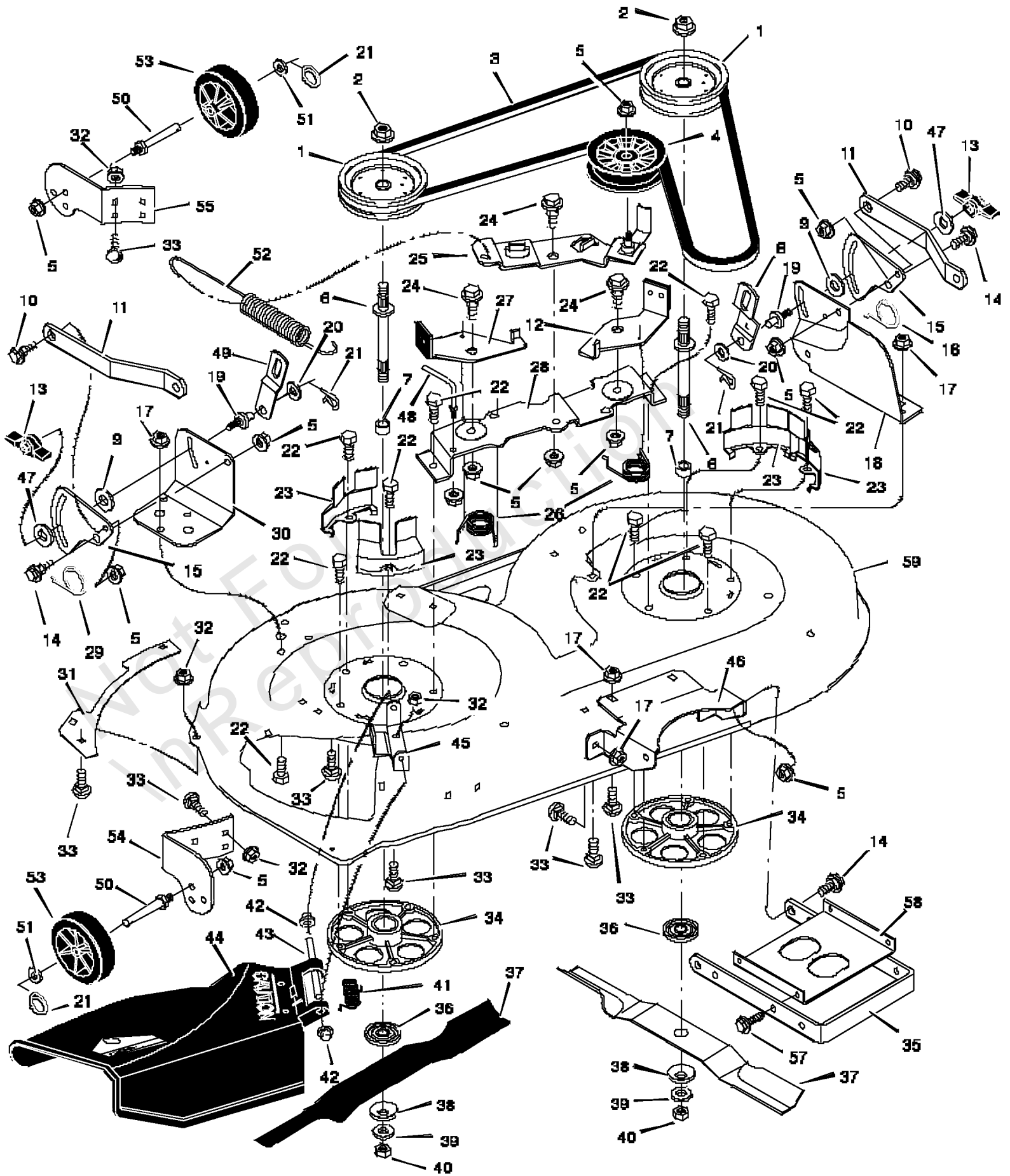
Mower Housing

REF NO	PART NO	QTY	DESCRIPTION
1	494199MA		Pulley, Jackshaft
2	15X121		Nut, Hex
3	037X88A		Belt, Mower Drive
4	091801		Pulley, Idler
5	015X84MA		Nut, Flange
6	094129		Jackshaft
7	094130MA		Spacer
8	094053E701MA		Link, Left Lift
9	094137MA		Pad, Friction
10	009X52MA		Bolt, Shoulder
11	094055E701MA		Bracket, Suspension
12	94049		Pad Assembly, Left Brake
13	094068MA		Knob
14	009X51MA		Bolt, Shoulder
15	94128E701		Plate, Suspension
16	166X43MA		Spring
17	015X79MA		Nut, Flange
18	94192E701MA		Bracket, Suspension
19	094064		Pin, Hanger
20	17X103MA		Washer
21	031X11MA		Ring, Locking
22	0025X7MA		Bolt
23	094051E701MA		Cover, Pulley
24	009X39MA		Bolt, Shoulder
25	94177E701		Arm, Idler
26	166X41MA		Spring
27	94047		Pad Assembly, Right Brake
28	094193E701MA		Bracket, Brake
29	166X42MA		Spring
30	94191E701		Bracket, Suspension
31	092426E701MA		Plate
32	015X88MA		Nut, Flange
33	002X53MA		Bolt, Carriage
34	092574		Mandrell Housing
35	94058E701		Bracket, Suspension
36	092466MA		Adapter, Blade
37	095101E701MA		Blade
38	17X166MA		Washer
39	17X165MA		Washer
40	15X100MA		Nut
41	0166X4MA		Spring
42	028X23MA		Cap, Push On
43	091767 Z		Rod, Pivot
44	094707MA		Deflector
45	91765E701		Bracket, Deflector Hinge
46	94190E701		Bracket, Front Hanger
47	017X45MA		Washer
48	094781MA		Guide, Belt
49	94611E701		Link, Right Lift
50	094025MA		BOLT, Gauge Wheel
51	017X91MA		Washer

Mower Housing

Note: Unless noted otherwise, use the standard torque specifications

Mfg. No: 42568x59A



Mower Housing

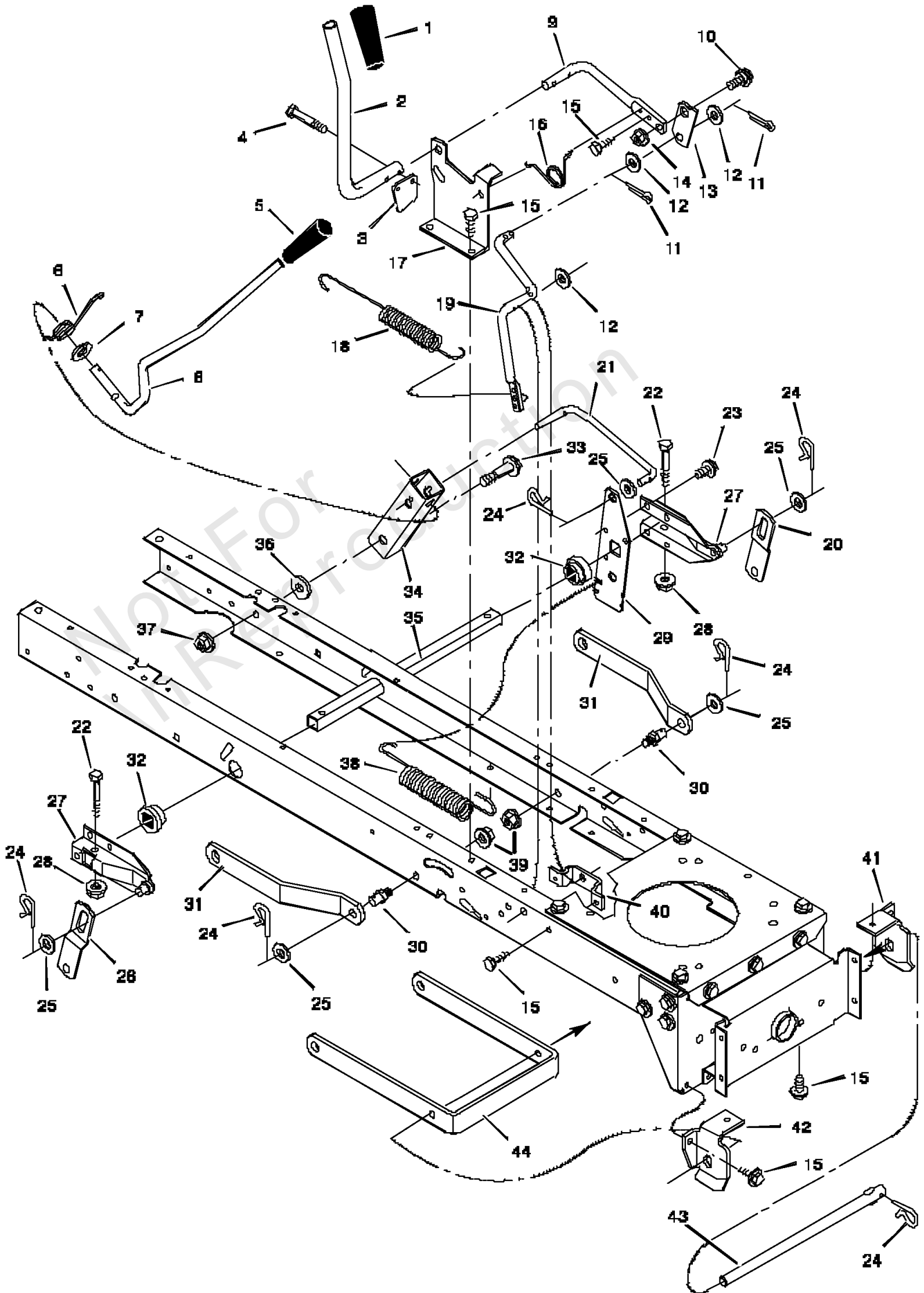
REF NO	PART NO	QTY	DESCRIPTION
52	165X119MA		Spring, Extension
53	092683MA		Wheel, Gage
54	1001260E701MA		Bracket, Right Wheel
55	92423E701		Bracket, Left Wheel
56	94604E701		Brace, Hanger
57	26X249MA		Screw
58	94604E701		Stiffener
59	94188E701		Housing, Blade -(Includes Ref. No. 17, 18, 30, 31, 32, 33, 45, 46, 53, 54, 55, and 56)

Not For In Reproduction

Mower Housing Suspension

Note: Unless noted otherwise, use the standard torque specifications

Mfg. No: 42568x59A



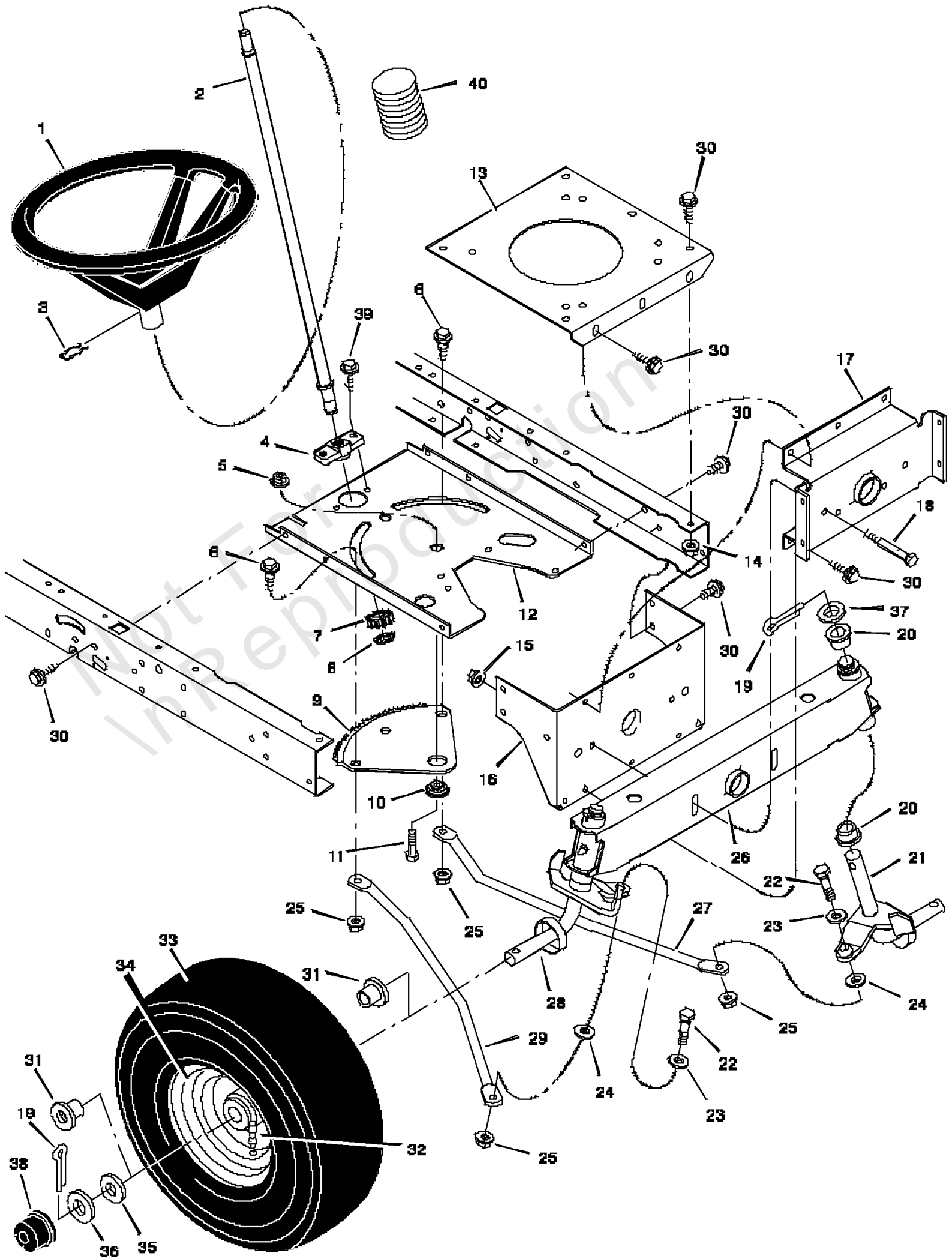
Mower Housing Suspension

REF NO	PART NO	QTY	DESCRIPTION
1	092698MA		Grip
2	094217 Z		Handle, PTO
3	94022E701		Pad, Switch
4	0025X3MA		Screw, Hex
5	092697MA		Grip
6	166X40MA		Spring
7	17X103MA		Washer
8	094195 Z		Lever, Lift
9	094017 Z		Lever, PTO
10	009X39MA		Bolt, Shoulder
11	030X20MA		Pin, Cotter
12	017X57MA		Washer
13	094004 Z		Link, PTO
14	015X84MA		Nut, Flange
15	26X249MA		Screw
16	166X39MA		Spring
17	94018		Bracket, PTO
18	165X119MA		Spring
19	94019 D		Crank, PTO
20	94611E701		Link, Left Lift
21	94028E701		Link, Lift
22	001X74MA		Bolt
23	026X49MA		Screw
24	0031X4MA		Pin, Hair
25	017X91MA		Washer
26	094053E701MA		Link, Right Lift
27	94180E701		Lever Assembly, Lift
28	15X118MA		Nut, Flange
29	94030E701		Plate, Lift Arm
30	094067MA		Pin
31	094055E701MA		Bracket, Rear Suspension
32	094065MA		Bushing
33	009X53MA		Bolt, Shoulder
34	94015E701		Bracket, Pivot
35	94063E701		Tube, Deck Lift
36	17X191MA		Washer
37	015X84MA		Nut, Flange
38	165X117MA		Spring
39	015X68MA		Nut, Flange
40	94005E701		Bracket, PTO
41	094027E701MA		Hanger, Left Deck
42	094026E701MA		Hanger, Right Deck
43	094158ZMA		Rod, Hanger
44	94058E701		Bracket, Suspension

Steering

Note: Unless noted otherwise, use the standard torque specifications

Mfg. No: 42568x59A



Steering

REF NO	PART NO	QTY	DESCRIPTION
1	095442		Wheel, Steering
2	094127		Post, Steering
3	094131MA		Clip, Retainer
4	094124MA		Bearing
5	15X113MA		Nut, Flange
6	009X57MA		Bolt, Shoulder
7	094122		Gear, Pinion
8	011X25MA		Ring, Snap
9	094121MA		Gear, Sector
10	094123MA		Bearing
11	001X84MA		CAPSCREW, Hex Head, 5/16-18 x 1
12	94003E701		Plate, Steering
13	94006E701		Plate, Engine
14	015X88MA		Nut, Flange
15	15X118MA		Nut, Flange
16	094013E701MA		Bracket, Hanger
17	094007E701MA		Axle, Hanger
18	01X146MA		Bolt
19	030X49MA		Pin, Cotter
20	092527MA		Bearing
21	094576E701MA		Spindle Assembly, Left
22	01X111MA		Bolt
23	17X104MA		Washer
24	017X53MA		Washer
25	015X84MA		Nut, Flange
26	94012E701		Axle Assembly
27	94021E701		Drag Link, Left
28	094575E701MA		Spindle Assembly, Right
29	94020E701		Drag Link, Right
30	26X249MA		Screw
31	091334		Bearing, Wheel
32	024373MA		Stem, Valve
33	091912MA		Tire *
--	407047MA		Tube
34	094579601		Wheel and Tire Assembly
35	17X195MA		Washer
36	17X192MA		Washer
37	17X113MA		Washer
38	094618MA		Hub Cap -(Optional)
39	26X267MA		Screw
40	054789MA		Bellows -(Optional)

Footnotes:

Note* When you order a tire, make sure to give the brand name of the tire so that the tread pattern on the tire will match.

Hardware Identification & Torque Specifications

Torque Specification Chart								
FOR STANDARD METRIC MACHINE HARDWARE (Tolerance ± 20%)								
Property Class	5.6		8.8		10.9		12.9	
	Class 5.6		Class 8.8		Class 10.9		Class 12.9	
Size Of Hardware	in/lbs	Nm.	in/lbs	Nm.	in/lbs	Nm.	in/lbs	Nm.
	ft/lbs		ft/lbs		ft/lbs		ft/lbs	
M3	5.88	.56	13.44	1.28	19.2	1.80	22.92	2.15
M4	13.44	1.28	30.72	2.90	43.44	4.10	52.56	4.95
M5	26.4	2.50	60.96	5.75	5.97	8.10	7.15	9.7
M6	44.64	4.3	7.3	9.9	10.3	14	12.1	16.5
M7	5.2	7.1	12.1	16.5	16.9	23	19.9	27
M8	7.7	10.5	17.7	24	25	34	29	40
M10	15	21	35	48	50	67	59	81
M12	26	36	61	83	86.2	117	103	140
M14	42	58	101	132	136	185	162	220
M16	64	88	147	200	210	285	250	340
M18	89	121	202	275	287	390	346	470
M20	126	171	290	390	405	550	486	660
M22	169	230	390	530	559	745	656	890
M24	217	295	497	375	708	960	840	1140
M27	320	435	733	995	1032	1400	1239	1680
M30	435	590	995	1350	1401	1900	1681	2280
M33	590	800	1349	1830	1902	2580	2278	3090
M36	759	1030	1740	2360	2441	3310	2935	3980
M39	988	1340	2249	3050	3163	4290	3798	5150

Torque Specification Chart						
FOR STANDARD MACHINE HARDWARE (Tolerance ± 20%)						
Hardware Grade	No Marks		SAE Grade 5		SAE Grade 8	
	SAE Grade 2		SAE Grade 5		SAE Grade 8	
Size Of Hardware	in/lbs	Nm.	in/lbs	Nm.	in/lbs	Nm.
	ft/lbs		ft/lbs		ft/lbs	
8-32	19	2.1	30	3.4	41	4.6
8-36	20	2.3	31	3.5	43	4.9
10-24	27	3.1	43	4.9	60	6.8
10-32	31	3.5	49	5.5	68	7.7
1/4-20	66	7.6	8	10.9	12	16.3
1/4-28	76	8.6	10	13.6	14	19.0
5/16-18	11	15.0	17	23.1	25	34.0
5/16-24	12	16.3	19	25.8	29	34.0
3/8-16	20	27.2	30	40.8	45	61.2
3/8-24	23	31.3	35	47.6	50	68.0
7/16-14	30	40.8	50	68.0	70	95.2
7/16-20	35	47.6	55	74.8	80	108.8
1/2-13	50	68.0	75	102.0	110	149.6
1/2-20	55	74.8	90	122.4	120	163.2
9/16-12	65	88.4	110	149.6	150	204.0
9/16-18	75	102.0	120	163.2	170	231.2
5/8-11	90	122.4	150	204.0	220	299.2
5/8-18	100	136	180	244.8	240	326.4
3/4-10	160	217.6	260	353.6	386	525.0
3/4-16	180	244.8	300	408.0	420	571.2
7/8-9	140	190.4	400	544.0	600	816.0
7/8-14	155	210.8	440	598.4	660	897.6
1-8	220	299.2	580	788.8	900	1,244.0
1-12	240	326.4	640	870.4	1,000	1,360.0

The guides and ruler furnished below are designed to help you select the appropriate hardware.



Nut, M8

Thread Diameter (mm)

Inside Diameter (in) Threads per inch

Nut, 1/2-16



Screw, M8- 1.25 x 25

Thread Diameter (mm) Distance between threads (mm) Body Length (mm)

Body Diameter Threads per inch Body Length (in)

Screw, 1/2- 16 x 2



Standard Hardware Sizing

When a washer or nut is identified as 1/2" (M8), this is the *Nominal size*, meaning the *inside diameter* is 1/2 inch (8mm metric thread diameter); if a second number is present it represents the *threads per inch* (distance between threads).

When bolt or capscrew is identified as 1/2 - 16 x 2" (M8 - 1.25 x 50), this means the *Nominal size*, or body diameter is 1/2 inch (8mm metric thread diameter), the second number, 16, represents the *threads per inch*, (*distance between threads*). The final number is the body length of the bolt or screw, 2 inches (50mm).

NOTES

- These torque values are to be used for all hardware excluding: locknuts, self-tapping screws, thread forming screws, sheet metal screws and socket head setscrews.
- Recommended seating torque values for locknuts:
 - for prevailing torque locknuts - use 65% of grade 5 torques.
 - for flange whizlock nuts and screws - use 135% of grade 5 torques.
- Unless otherwise noted on assembly drawings, all torque values must meet this specification.

Common Hardware Types

Hex Head Capscrew



Washer



Carriage Bolt



Hex Nut

Wrench & Fastener Size Guide

1/4" Bolt or Nut Wrench—7/16"	5/16" Bolt or Nut Wrench—1/2"	3/8" Bolt or Nut Wrench—9/16"	7/16" Bolt or Nut Wrench (Bolt)—5/8" Wrench (Nut)—11/16"	1/2" Bolt or Nut Wrench—3/4"
M6 Bolt or Nut Wrench—10mm	M8 Bolt or Nut Wrench—13mm	M10 Bolt or Nut Wrench—17mm	M12 Bolt or Nut Wrench—19mm	M14 Bolt or Nut Wrench—22mm

MURRAY®