

Remove DU™ Magneto Bearing

Model Series 111400, 111600, 113400, 121600, 122600, 123400, 123600, 21A800, 21B800, 284H00, 285H00, 286H00, 28AH00, 28BH00, 28CH00, 28S700, 31E700, 31F700, 31G700, 31H700, 31J700, 31K700, 31L700, 31M700, 311700

1. Refer to 2 for tools required to remove DU™ bearings.
2. Place cylinder support (3) under magneto bearing (2) and place bushing driver (1) down through worn bearing.
3. Press bearing out of cylinder, Fig. 7.

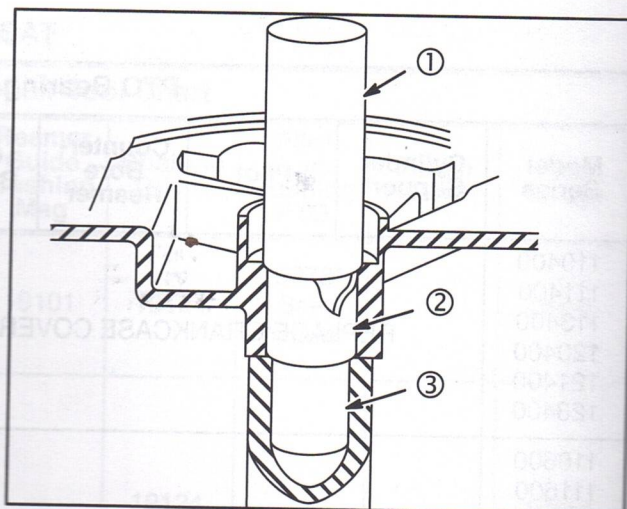


Fig. 7

Install Magneto DU™ Bushing

Model Series 111400, 111600, 113400, 121400, 121600, 122600, 123400, 123600, 21A800, 21B800, 284H00, 285H00, 286H00, 28AH00, 28BH00, 28CH00, 31E700, 31F700, 31G700, 31H700, 31J700, 31K700, 31L700, 31M700,

1. Place DU bearing on cylinder or cover bearing with oil hole in line with oil hole in cylinder or cover bearing. If cover bearing does not have oil hole, place split (when present) of bearing (1) as shown in Fig. 8.
2. Use a bushing driver (2) to press bearing (3) to dimension shown in Table No. 7 page 6 and Fig. 9. If no dimension is given for Model Series, press bushing until flush with seal surface. Measure from seal surface on magneto side.

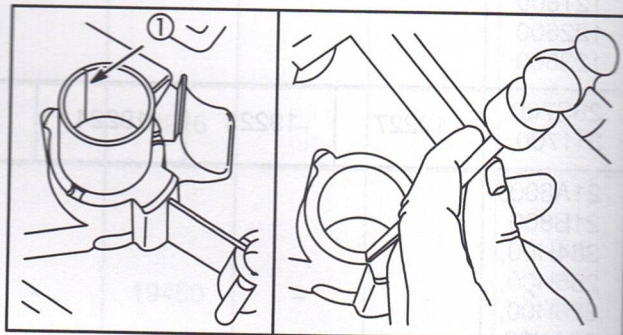


Fig. 8

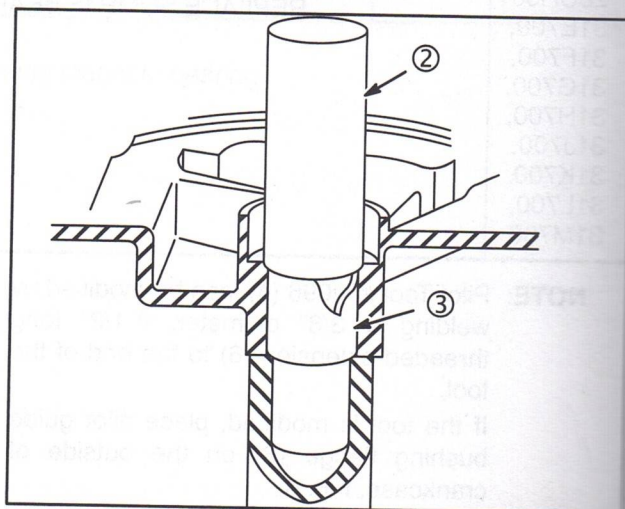


Fig. 9