

三菱ミニロータ

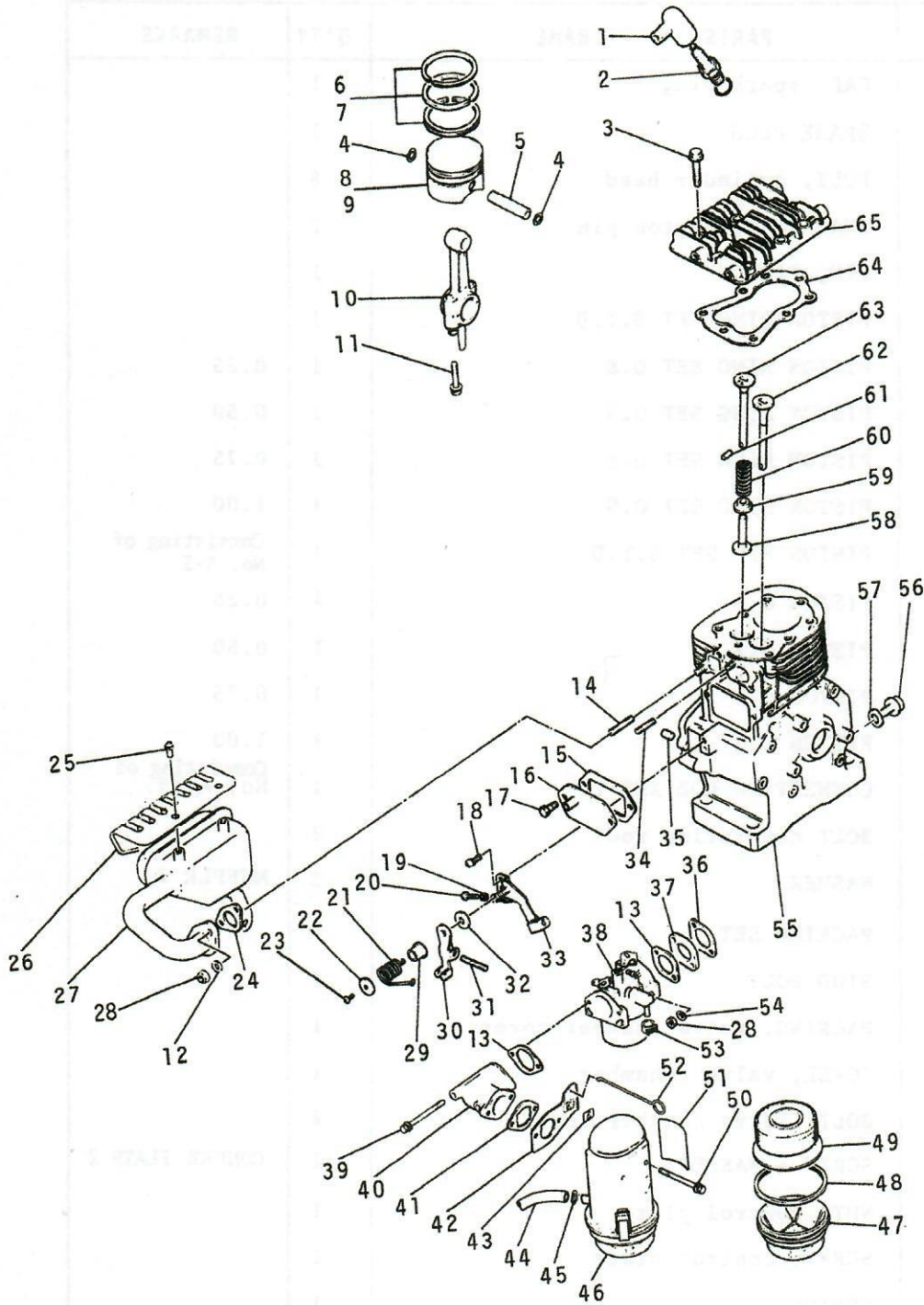
MITSUBISHI MINI ROTOR

CT151

CONTENTS

	SECTION NAME	PAGE
A.	ENGINE	1~6
B.	ENGINE	7~10
C.	FLYWHEEL MAGNET ASS'Y.....	11.12
D.	CARBURETOR	13.14
E.	RECOIL STARTER.....	15.16
F.	BONNET & BELT COVER	17.18
G.	PULLEY & TENSION PULLEY	19.20
H.	FRAME & FENDER	21~24
J.	TRANSMISSION ASS'Y.....	25~28
K.	TRANSMISSION ASS'Y.....	29~32
L.	TOOL ASS'Y	33~34
M.	HANDLE ASS'Y	35~38

A. ENGINE

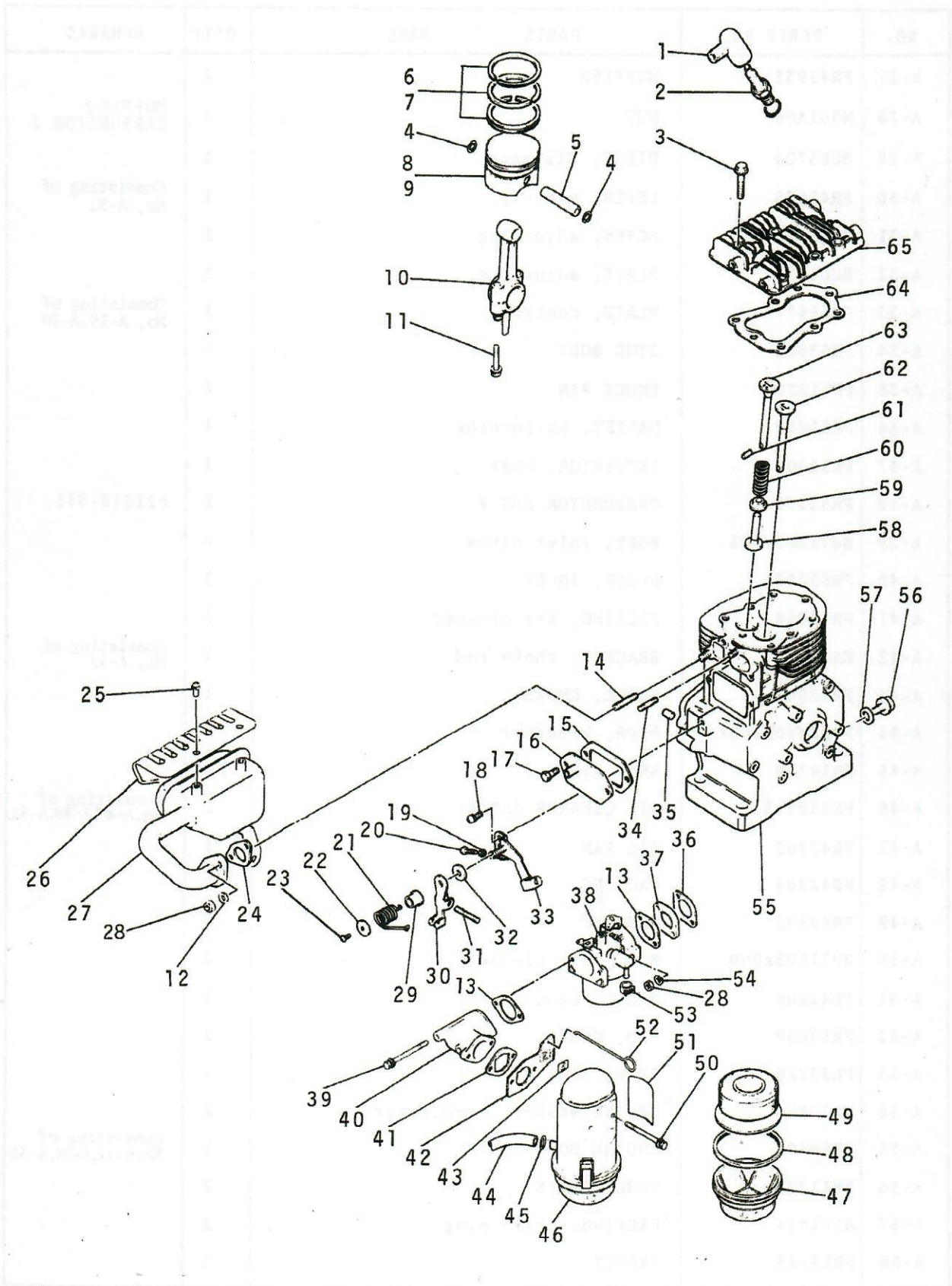


A. ENGINE

N25L-3S-38

NO.	PARTS NO.	PARTS NAME	Q' TY	REMARKS
A-1	FR62008	CAP, spark plug	1	
A-2	FR63087	SPARK PLUG	1	
A-3	ZZ70003B	BOLT, cylinder head	8	
A-4	FR41803B	SNAP RING, piston pin	2	
A-5	FR41802B	PIN, PISTON	1	
A-6	FR41909	PISTON RING SET S.T.D	1	
A-7	FR42262A	PISTON RING SET O.S	1	0.25
A-7	FR42262B	PISTON RING SET O.S	1	0.50
A-7	FR42262C	PISTON RING SET O.S	1	0.75
A-7	FR42262D	PISTON RING SET O.S	1	1.00
A-8	FR42149	PISTON PIN SET S.T.D	1	Consisting of No. A-5
A-9	FR42261A	PISTON O.S	1	0.25
A-9	FR42261B	PISTON O.S	1	0.50
A-9	FR42261C	PISTON O.S	1	0.75
A-9	FR42261D	PISTON O.S	1	1.00
A-10	FR41814B	CONNECTING ROD ASS'Y	1	Consisting of No, A-11
A-11	ZZ70025xx035	BOLT connecting rod	2	
A-12	W200H06	WASHER	2	MUFFLR 2
A-13	FR53001	PACKING SET	1	
A-14	FR53581	STUD BOLT	2	
A-15	FR41846	PACKING, valve chamber cover	1	
A-16	FR42290	COVER, valve chamber	1	
A-17	B011A06x010	BOLT, valve chamber cover	2	
A-18	H081D06x010	SCREW & WASHER	2	CONTROL PLATE 2
A-19	BG04168	NUT, control plate	1	
A-20	H051D04x020	SCREW, control plate	1	
A-21	BG05705	SPRING	1	
A-22	BG01433	WASHER	1	
A-23	H051D04x008	SCREW, governor	1	
A-24	FR41890	GASKET, muffler	1	
A-25	FR42937	SCREW, muffler cover	3	
A-26	FR41990	COVER, muffler	1	

A. ENGINE

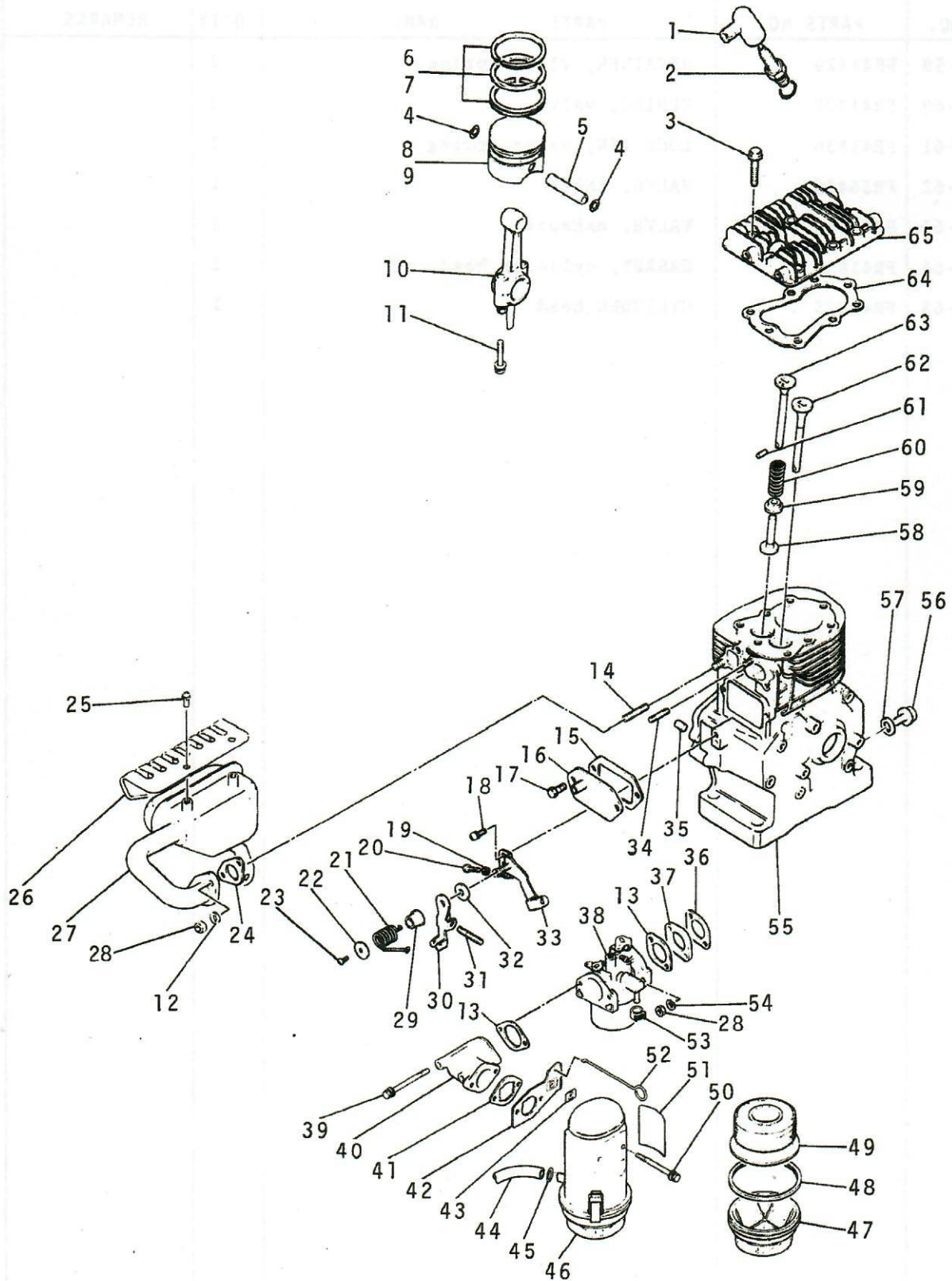


A. ENGINE

N25L-3S-38

NO.	PARTS NO.	PARTS NAME	Q'TY	REMARKS
A-27	FR41935	MUFFLER	1	
A-28	N001A06	NUT	4	MUFFLER 2 CARBURETOR 2
A-29	BG05704	PIECE, distance	1	
A-30	FR42675	LEVER, control	1	Consisting of No, A-31
A-31	FR53053	SCREW, adjusting	1	
A-32	BG01475	PLATE, adjusting	1	
A-33	FR56477	PLATE, control	1	Consisting of No, A-19.A-20
A-34	FR53582	STUD BOLT	2	
A-35	FR41238	KNOCK PIN	2	
A-36	FR53002	GASKET, carburetor	1	
A-37	FR53003	INSULATOR, heat	1	
A-38	FR53274	CARBURETOR ASS'Y	1	621018-041
A-39	B071A05x065	BOLT, inlet elbow	2	
A-40	FR53057	ELBOW, INLET	1	
A-41	FR53034	PACKING, air cleaner	1	
A-42	FA21088	BRACKET, choke rod	1	Consisting of No, A-43
A-43	FR42962	LABEL, CHOKE	1	
A-44	P002W80x200B	PIPE, breather	1	
A-45	FR18339	SNAP RING	1	
A-46	FR53031B	AIR CLEANER ASS'Y	1	Consisting of No.A-47,A-49,A-51
A-47	FR42202	OIL PAN	1	
A-48	FR42204	PACKING	1	
A-49	FR42203	ELEMENT	1	
A-50	B071A05x060	BOLT, air cleaner	2	
A-51	FR42206	PLATE, caution	1	
A-52	FR53039	ROD, CHOKE	1	
A-53	FR53226	CLIP, fuel pipe	1	
A-54	W220R06	SPRING washer, carburetor	2	
A-55	FR56400	ENGINE BODY ASS'Y	1	Consisting of No.A-14,A-34,A-35
A-56	FN11223	PLUG, DRAIN	2	
A-57	A001W14	PACKING, drain plug	2	
A-58	FR53133	TAPPET	2	

A. ENGINE

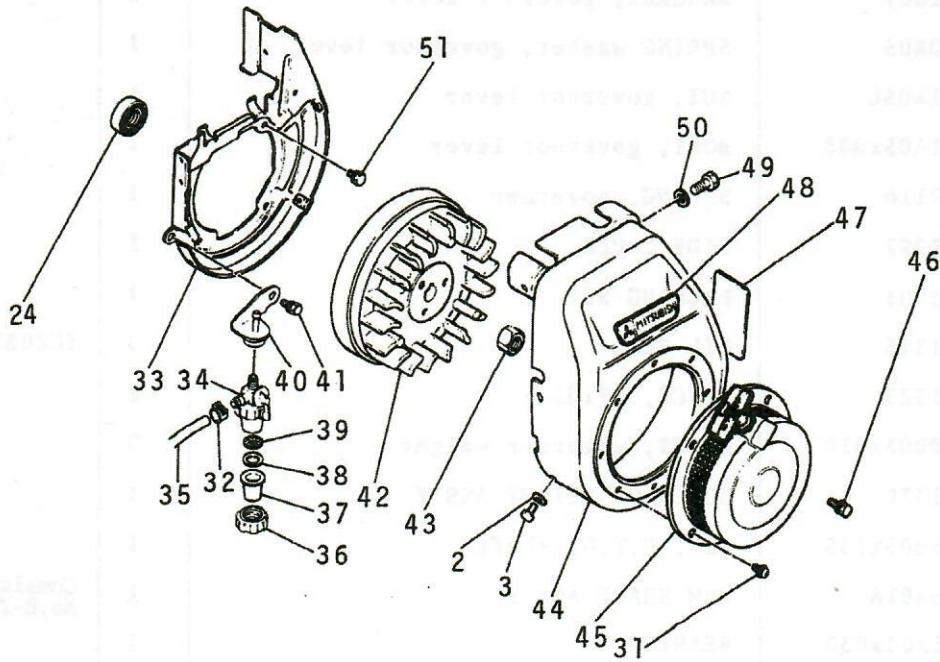
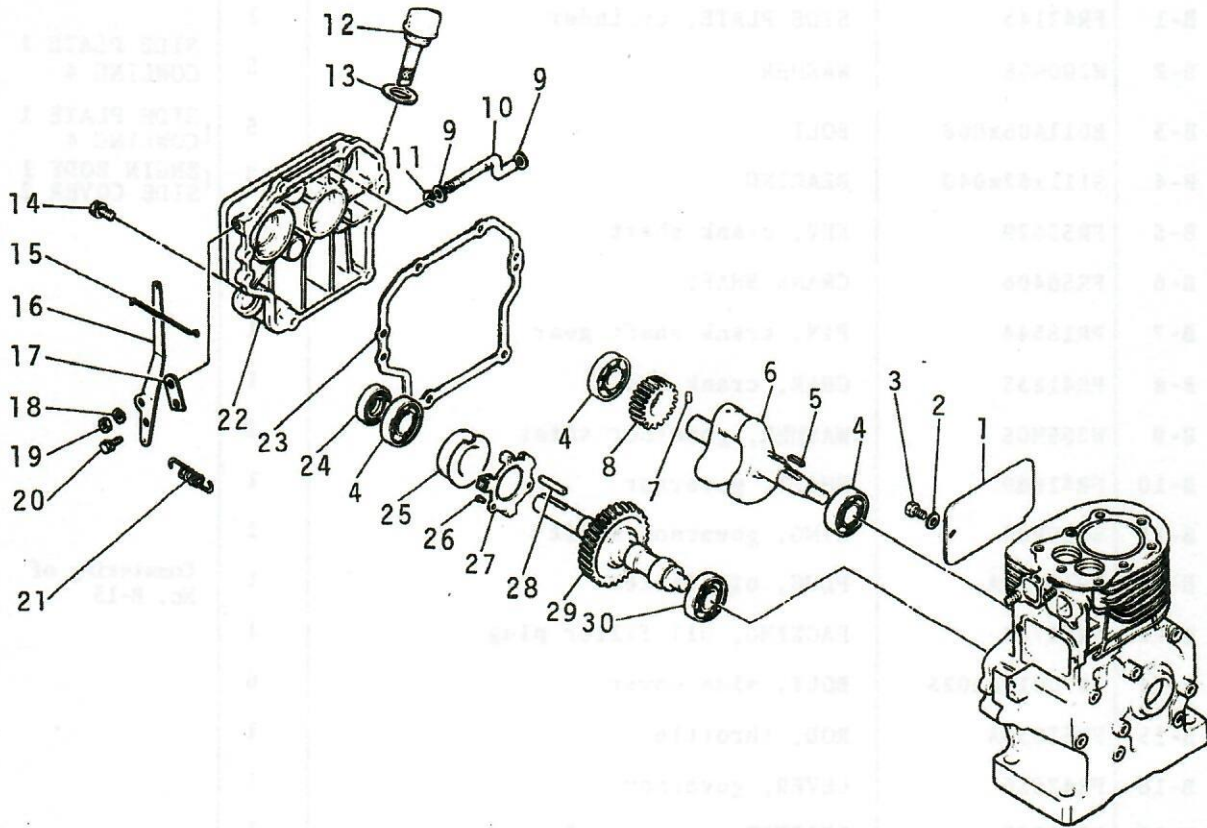


A. ENGINE

N25L-3S-38

NO.	PARTS NO.	PARTS NAME	Q'TY	REMARKS
A-59	FR41829	RETAINER, vlave spring	2	
A-60	FR41828	SPRING, valve	2	
A-61	FR41830	LOCK PIN, valve spring	2	
A-62	FR56430	VALVE, INLET	1	
A-63	FR56469	VALVE, exhaust	1	
A-64	FR41859	GASKET, cylinder head	1	
A-65	FR41825	CYLINDER head	1	

B. ENGINE

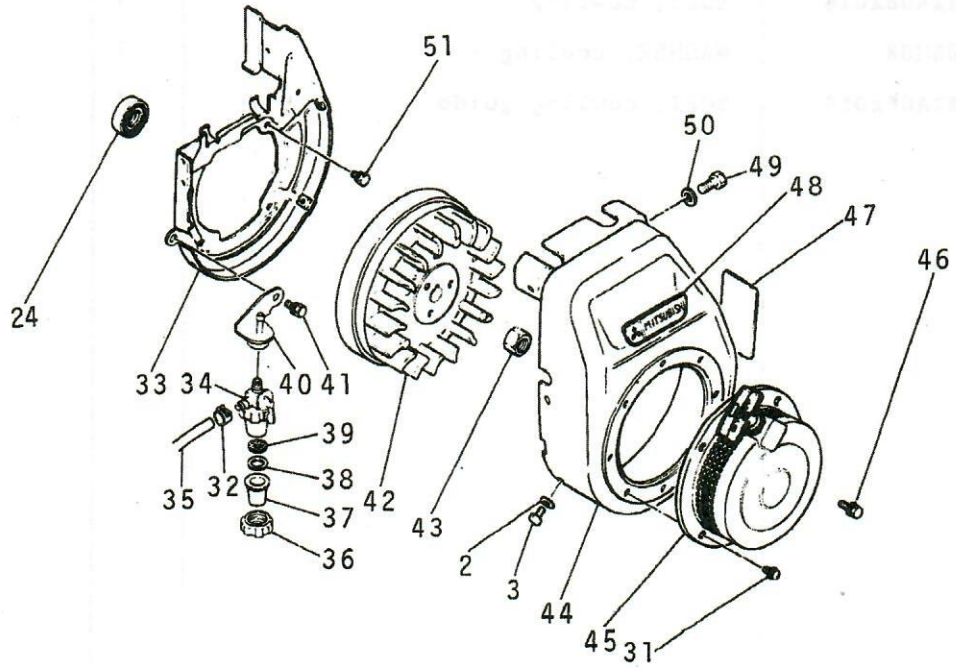
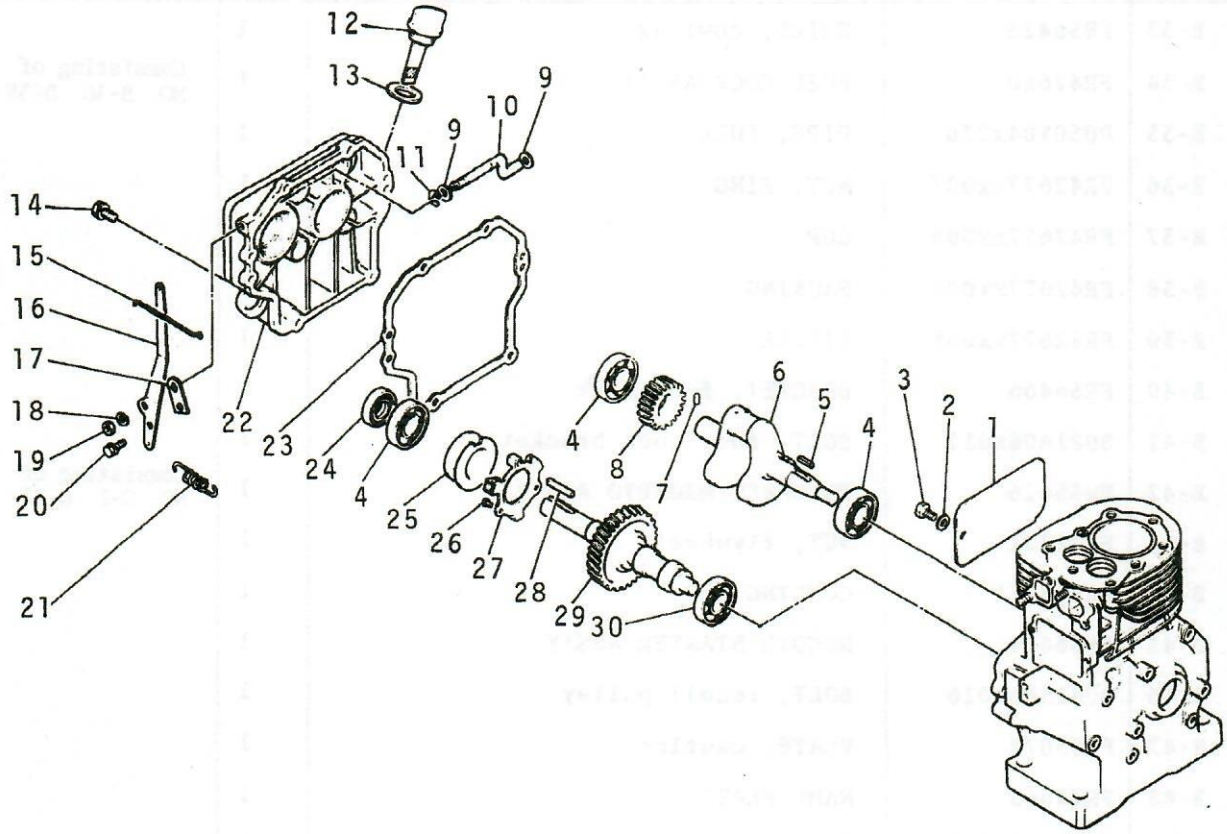


B. ENGINE

N25L-3S-38

NO.	PARTS NO.	PARTS NAME	Q'TY	REMARKS
B-1	FR42143	SIDE PLATE, cylinder	1	SIDE PLATE 1 COWLING 4
B-2	W200H06	WASHER	5	
B-3	B011A06x008	BOLT	5	SIDE PLATE 1 COWLING 4
B-4	S111x62x040	BEARING	3	
B-5	FR53629	KEY, crank shaft	1	ENGIN BODY 1 SIDE COVER 2
B-6	FR56406	CRANK SHAFT	1	
B-7	FR18544	PIN, crank shaft gear	1	
B-8	FR41835	GEAR, crank shaft	1	
B-9	W205H05	WASHER, governor shfat	2	
B-10	FR41869	SHAFT, governor	1	
B-11	S500P04	RING, governor shaft	1	
B-12	FR18429A	PLUG, oil filler	1	Consisting of No. B-13
B-13	FN14784	PACKING, oil filler plug	1	
B-14	ZZ70010xx025	BOLT, side cover	6	
B-15	FR53036A	ROD, throttle	1	
B-16	FR42556	LEVER, governor	1	
B-17	FR41867	BRACKET, governor lever	1	
B-18	W220R05	SPRING washer, governor lever	1	
B-19	N001A05L	NUT, governor lever	1	
B-20	B081A05x008	BOLT, governor lever	1	
B-21	FR42116	SPRING, governor	1	
B-22	FR41997	SIDE COVER	1	
B-23	FR53001	PACKING SET	1	
B-24	FR41845	OIL SEAL	2	TC20328
B-25	FR41323	PIECE, sliding	1	
B-26	W620D03x010	RIVET, governor weight	3	
B-27	FR41350	GOVERNOR WEIGHT ASS'Y	1	
B-28	W405B05x035	KEY, P.T.O. shaft	1	
B-29	FR15491A	CAM SHAFT ASS'Y	1	Consisting of No. B-26. B-27
B-30	S111x62x030	BEARING	1	
B-31	H081D06x010	SCREW & WASHER	4	
B-32	FR53226	CLIP, fuel pipe	1	

B. ENGINE

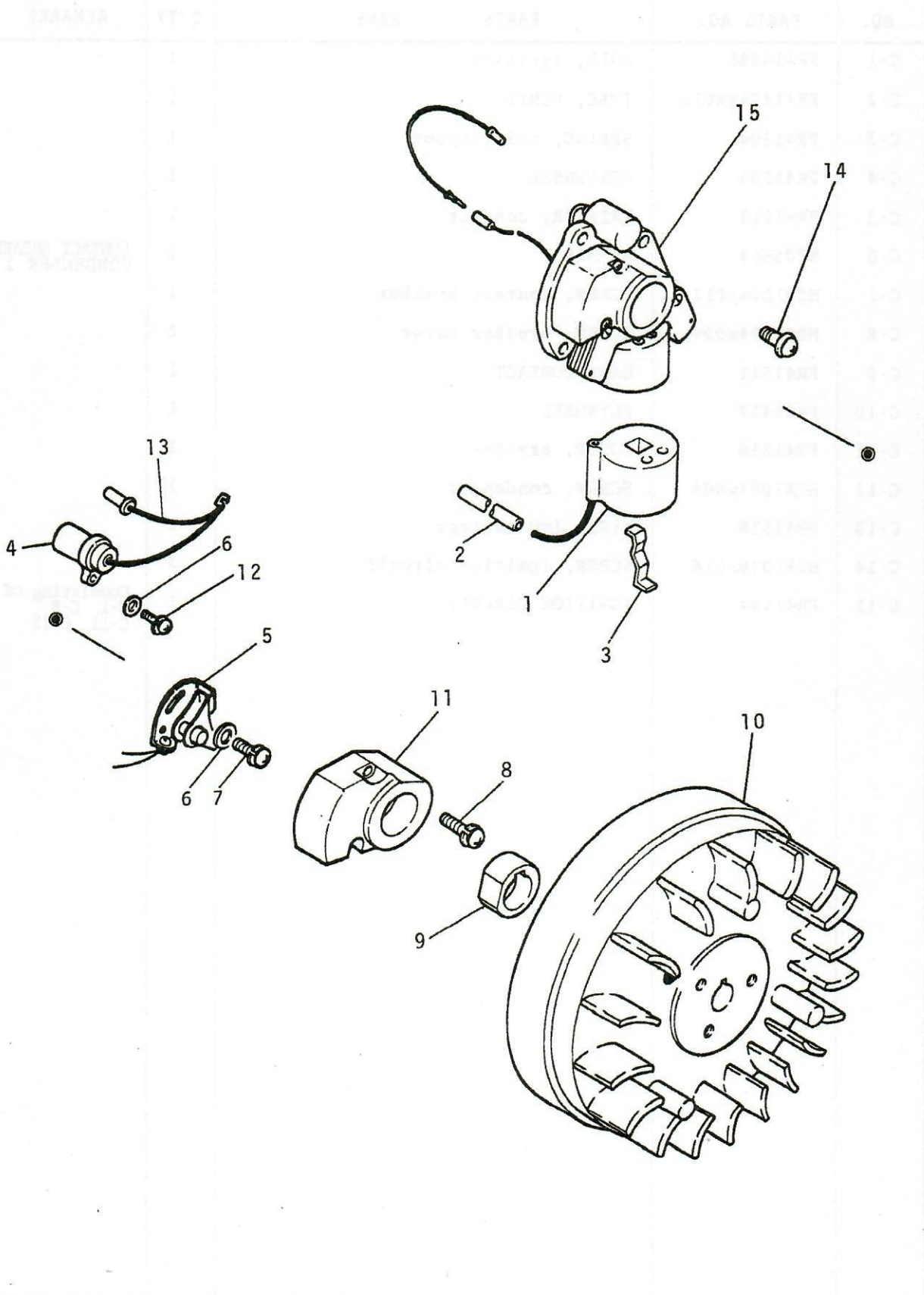


B. ENGINE

N25L-3S-38

NO.	PARTS NO.	PARTS NAME	Q'TY	REMARKS
B-33	FR56423	GUIDE, cowling	1	
B-34	FR42680	FUEL COCK ASS'Y	1	Consisting of NO. B-36 B-39
B-35	P050Y04x230	PIPE, FUEL	1	
B-36	FR42677xx007	NUT, RING	1	
B-37	FR42677xx006	CUP	1	
B-38	FR42677xx004	PACKING	1	
B-39	FR42677xx005	FILTER	1	
B-40	FR56466	BRACKET, fuel cock	1	
B-41	B081A06x012	BOLT, fuel cock bracket	1	
B-42	FR56426	FLYWHEEL MAGNETO ASS'Y	1	Consisting of NO. C-1 C-13
B-43	FR41231	NUT, flywheel	1	
B-44	FR56421A	COWLING	1	
B-45	FR56424	RECOIL STARTER ASS'Y	1	
B-46	B081A06x016	BOLT, recoil pulley	1	
B-47	FR53078	PLATE, caution	1	
B-48	FR42665	NAME PLATE	1	
B-49	B011A08x016	BOLT, cowling	1	
B-50	W205H08	WASHER, cowling	1	
B-51	B081A06x010	BOLT, cowling guide	4	

C. FLYWHEEL MAGNET ASS'Y

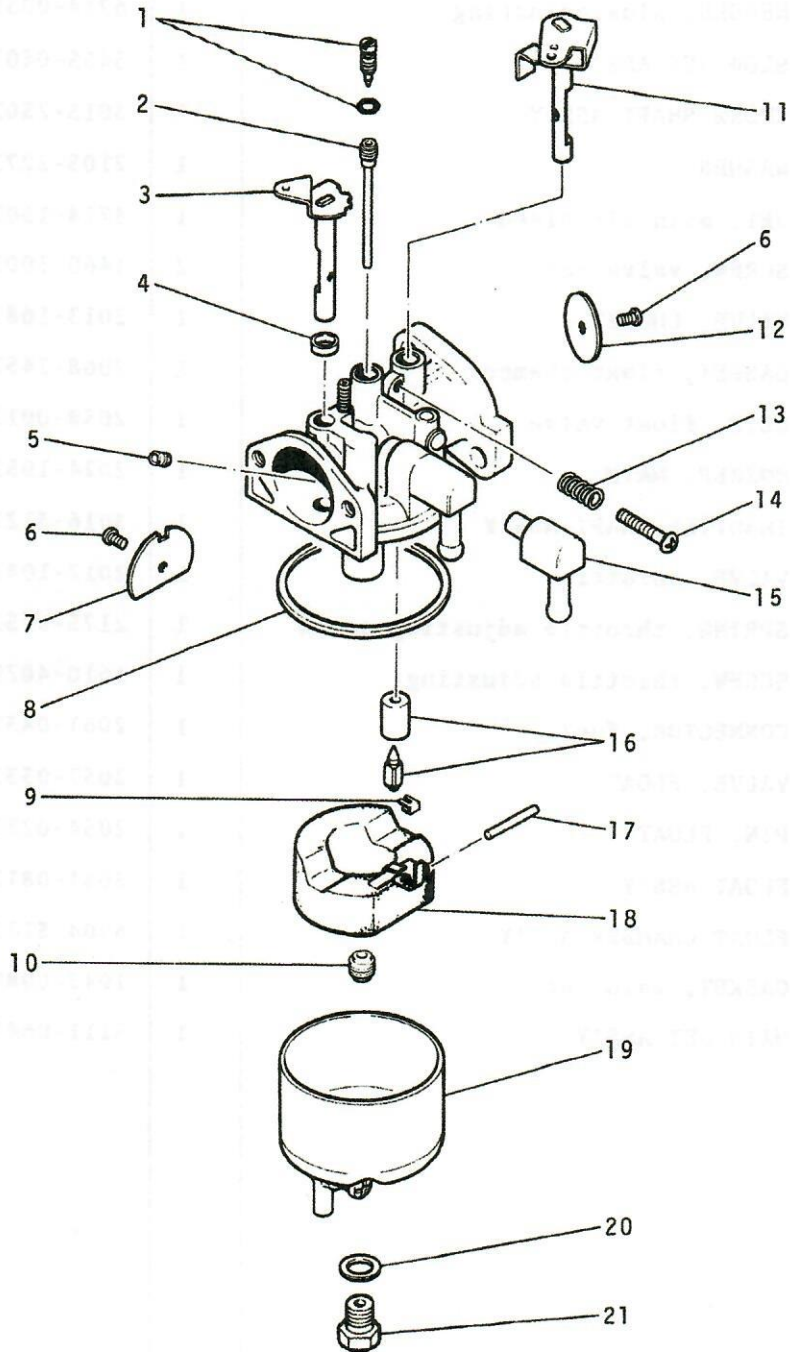


C. FLYWHEEL MAGNET ASS'Y

N25L-3S-38

NO.	PARTS NO.	PARTS NAME	Q'TY	REMARKS
C-1	FR41498B	COIL, igrition	1	
C-2	FR41494xx015	TUBE, VINYL	1	
C-3	FR41504	SPRING, coil support	1	
C-4	FR41506	CONDENSER	1	
C-5	FR41512	BREAKER, contact	1	
C-6	W205H04	WASHER	2	CONTACT BREAKER 1 CONDENSER 1
C-7	H081D04x012	SCREW, contact breaker	1	
C-8	H081D04x024	SCREW, breaker cover	2	
C-9	FR41511	CAM, CONTACT	1	
C-10	FR56427	FLYWHEEL	1	
C-11	FR41510	COVER, breaker	1	
C-12	H081D04x008	SCREW, condenser	1	
C-13	FR41518	WIRE, low voltage	1	
C-14	H081D06x016	SCREW, ignition circuit	3	
C-15	FR41494	IGNITION CIRCUIT	1	Consisting of NO. C-1 C-8 C-11 C-13

D. CARBURETOR

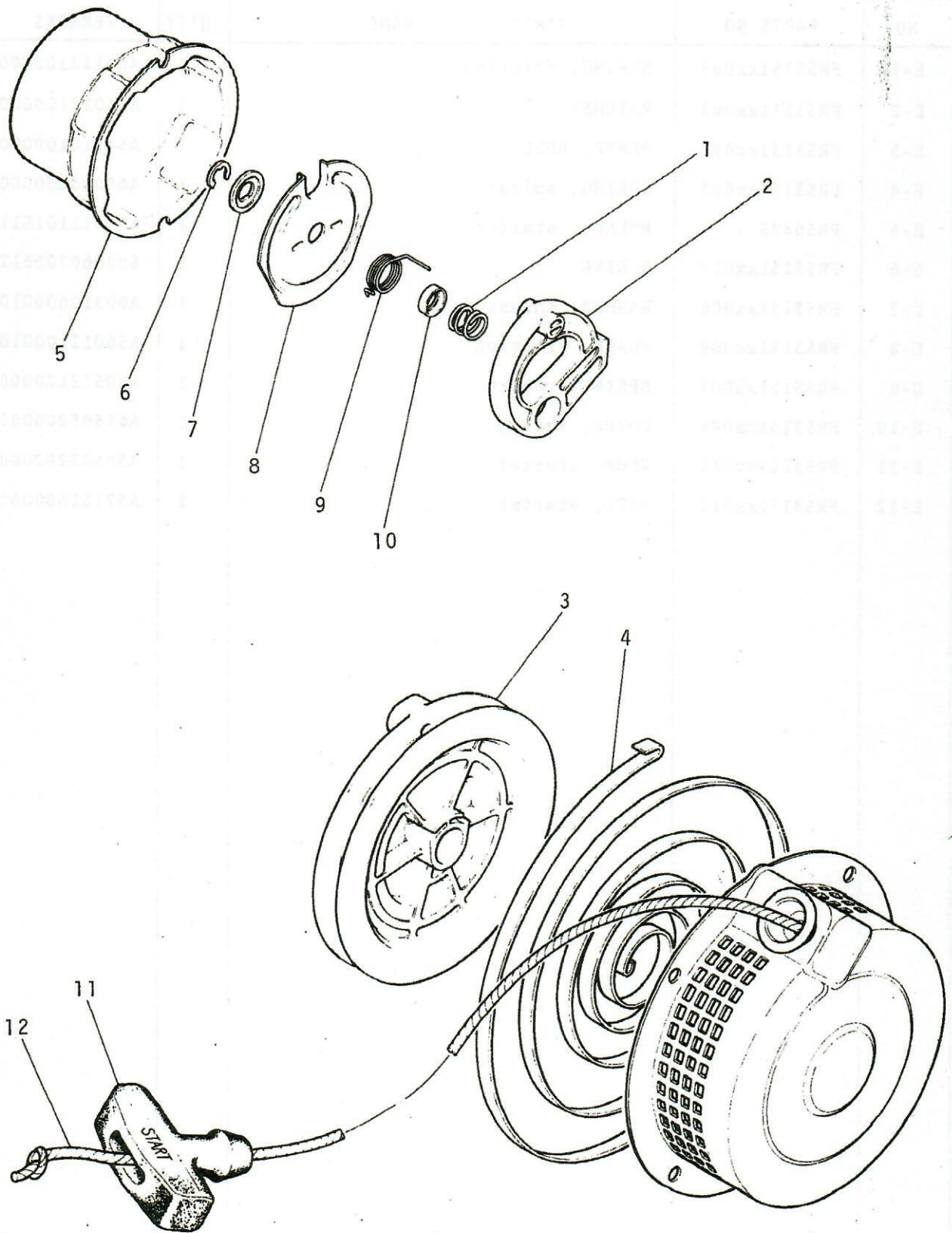


D. CARBURETOR

N25L-3S-38

NO.	PARTS NO.	PARTS NAME	Q'TY	REMARKS
D-1	FC06234xx003	NEEDLE, slow adjusting	1	6234-0031
D-2	FC05455xx040	SLOW JET ASS'Y	1	5455-0401
D-3	FC03015xx250	CHOKE SHAFT ASS'Y	1	3015-2501
D-4	FC02105xx227	WASHER	1	2105-2271
D-5	FC04714xx150	JET, main air bleed	1	4714-1501
D-6	FC14603xx005	SCREW, valve set	2	1460-3005
D-7	FC02013xx168	VALVE, CHOKE	1	2013-1681
D-8	FC02068xx245	GASKET, float chamber	1	2068-2451
D-9	FC02058xx001	CLIP, float valve	1	2058-0011
D-10	FC02024xx195	NOZZLE, MAIN	1	2024-1951
D-11	FC03016xx312	THROTTLE SHAFT ASS'Y	1	3016-3121
D-12	FC02012xx104	VALVE, throttle	1	2012-1041
D-13	FC02175xx975	SPRING, throttle adjusting screw	1	2175-9751
D-14	FC16104xx020	SCREW, throttle adjusting	1	1610-4020
D-15	FC02061xx083	CONNECTOR, fuel	1	2061-0831
D-16	FC02057xx033	VALVE, FLOAT	1	2057-0331
D-17	FC02054xx023	PIN, FLOAT	1	2054-0231
D-18	FC03051xx081	FLOAT ASS'Y	1	3051-0811
D-19	FC06004xx517	FLOAT CHAMBER ASS'Y	1	6004-5171
D-20	FC19430xx080	GASKET, main jet	1	1943-0080
D-21	FC05111xx064	MAIN JET ASS'Y	1	5111-0641

E. RECOIL STARTER

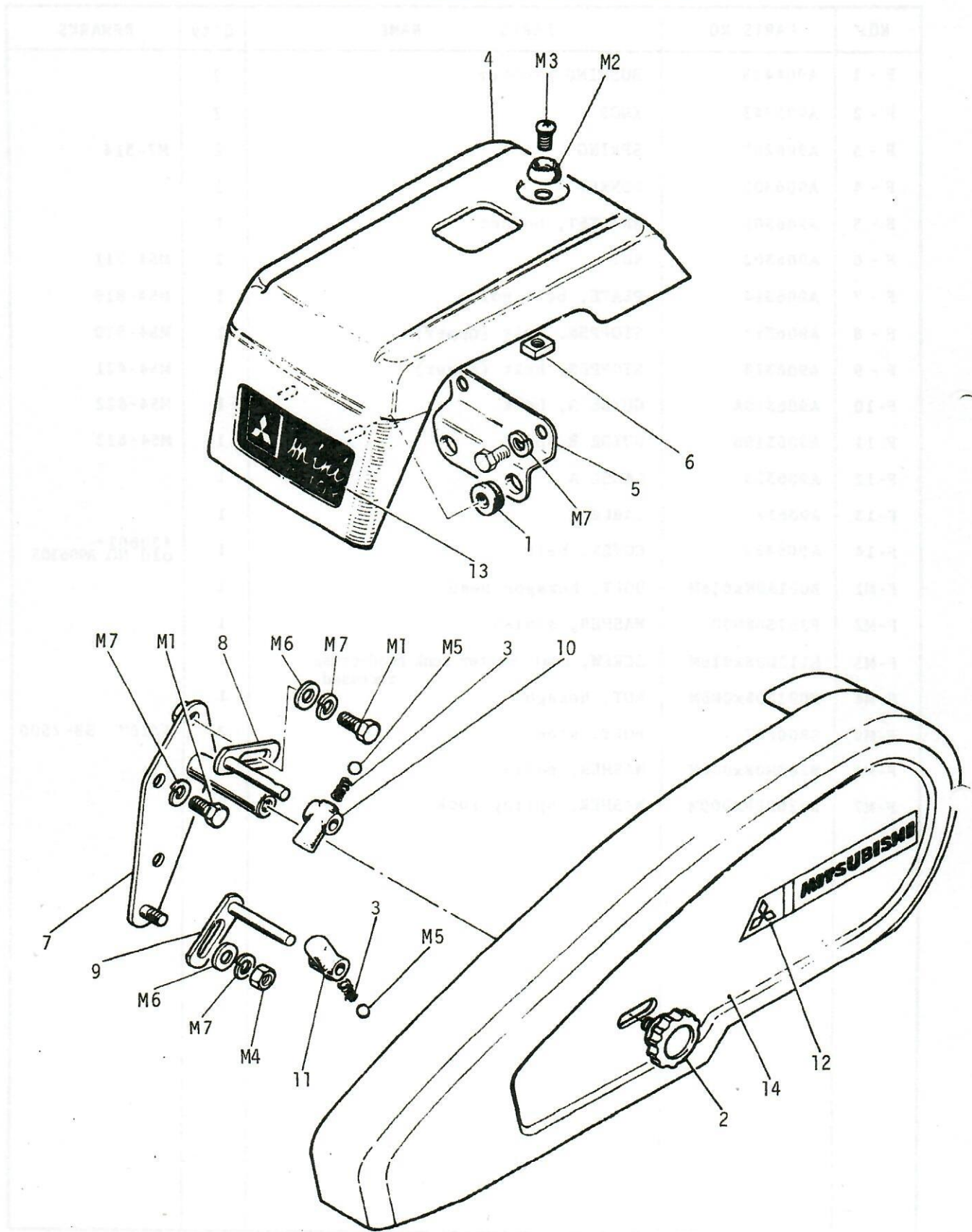


E. RECOIL STARTER

N25L-3S-38

NO.	PARTS NO.	PARTS NAME	Q'TY	REMARKS
E-1	FR53151xx005	SPRING, friction	1	A60112100000
E-2	FR53151xx003	RATCHET	1	A55012100000
E-3	FR53151xx002	PLATE, REEL	1	A54112100000
E-4	FR53151xx004	SPRING, spiral	1	A60010600000
E-5	FR56425	PULLEY, starter	1	A70012101511
E-6	FR53151xx010	E RING	1	500060700612
E-7	FR53151xx006	WASHER, thrust	1	A60310600010
E-8	FR53151xx009	PLATE, friction	1	A56012100010
E-9	FR53151xx007	SPRING, return	1	A60512120000
E-10	FR53151xx008	COVER, spring	1	A61505200000
E-11	FR53151xx013	KNOB, starter	1	A30503200000
E-12	FR53151xx012	ROPE, starter	1	A57151300000

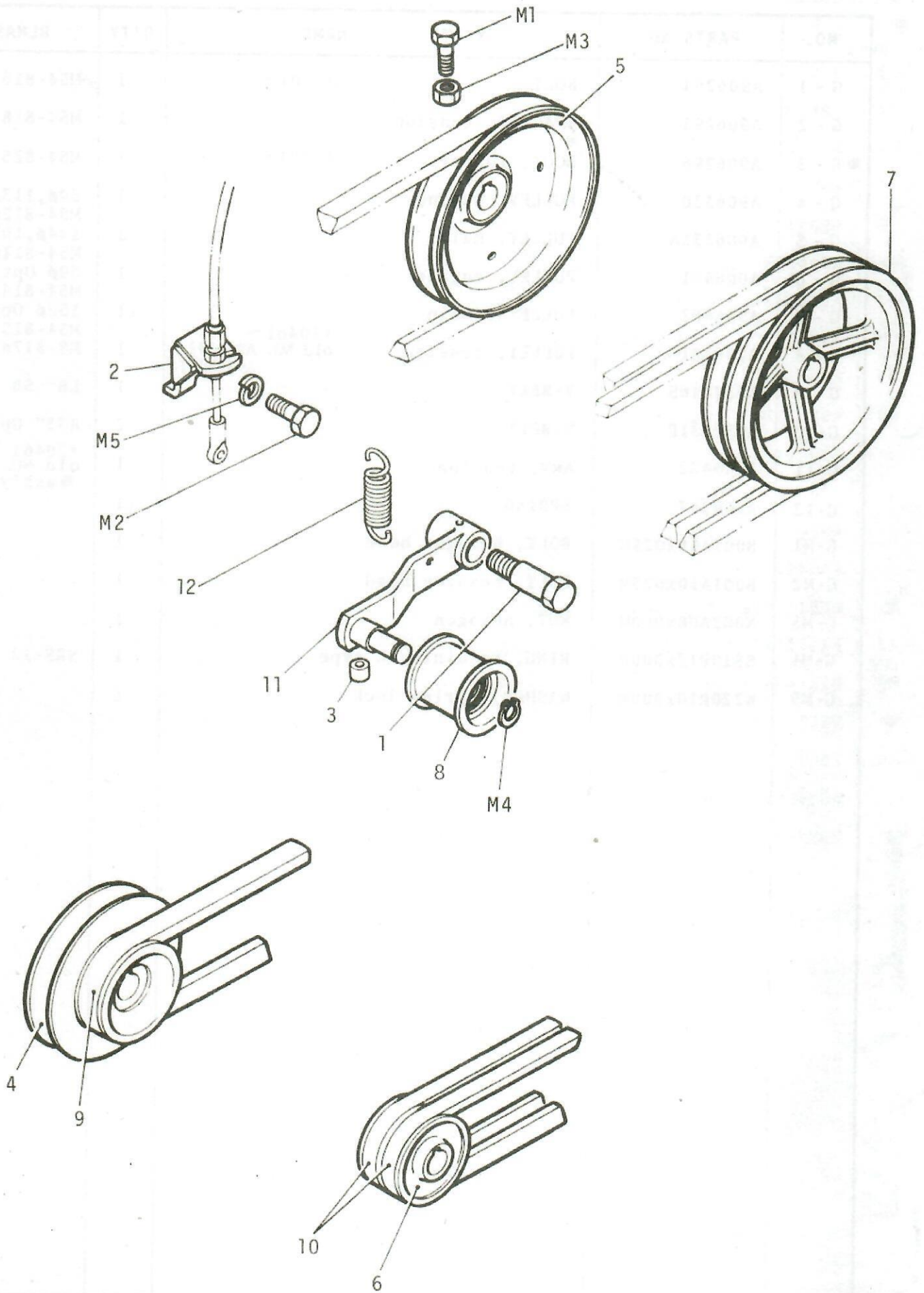
F. BONNET & BELT COVER



F. BONNET & BELT COVER

NO.	PARTS NO.	PARTS NAME	Q'ty	REMARKS
F - 1	A904415	BUSHING, rubber	2	
F - 2	A905743	KNOB	2	
F - 3	A906257	SPRING	2	M7-314
F - 4	A906300	BONNET	1	
F - 5	A906301	BRACKET, bonnet	1	
F - 6	A906302	NUT	1	M54-711
F - 7	A906314	PLATE, belt guide	1	M54-819
F - 8	A906317	STOPPER, belt (upper)	1	M54-820
F - 9	A906318	STOPPER, belt (lower)	1	M54-821
F-10	A906319A	GUIDE A, belt	1	M54-822
F-11	A906319B	GUIDE B, belt	1	M54-822
F-12	A906325	LABEL A	1	
F-13	A906327	LABLE C	1	
F-14	A906432	COVER, belt	1	#30601~ old NO. A906303
F-M1	B001A08x016M	BOLT, hexagon head	3	
F-M2	F257508000	WASHER, sinish	1	
F-M3	H111D08x016M	SCREW, oval counter sunk head-cross recessed	1	
F-M4	N002A08x000M	NUT, hexagon	1	
F-M5	S800P07	BOLT, steel	2	5/16" SB-2500
F-M6	W200H08x000M	WASHER, palin	2	
F-M7	W220R08x000M	WASHER, spring lock	6	

G. PULLEY & TENSION PULLEY

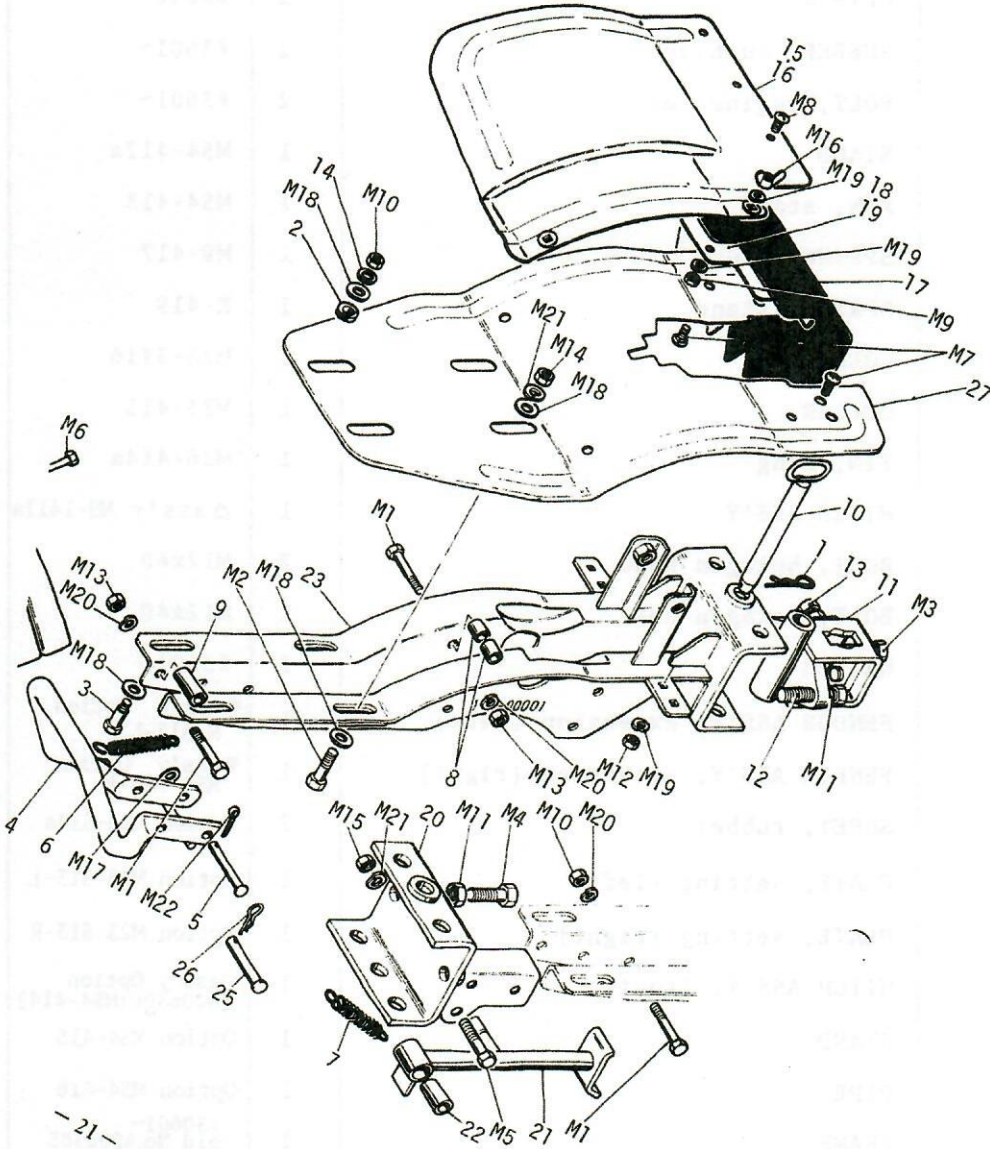


G. PULLEY & TENSION PULLEY

NO.	PARTS NO.	PARTS	NAME	Q'TY	REMARKS
G - 1	A906294	BOLT	#7701 ~	1	M54-816
G - 2	A906295	BRACKET, tension		1	M54-818
*G - 3	A906296	BOOT, rubber	#2001 ~	1	M54-825
G - 4	A906330	PULLEY, engine		1	69 ϕ , 113.5 ϕ M54-812a
G - 5	A906331A	PULLEY, main		1	144 ϕ , 103 ϕ M54-811a
G - 6	A906401	PULLEY, engine		1	59 ϕ Option M54-814
G - 7	A906402	PULLEY, main		11	152 ϕ Option M54-813
G - 8	A906421	PULLEY, tension	#20461 ~ old NO. A906292 A932503T	1	M8-817a
G - 9	A932546S	V-BELT		1	LB ~ SB 33"
G-10	A932531P	V-BELT		2	A33" Option
G-11	A906422	ARM, tension		1	#20461 old NO. A906291 *ass'y
G-12	A906297	SPRING		1	
G-M1	B001A08x025M	BOLT, hexagon head		1	
G-M2	B001A10x025M	BOLT, hexagon head		1	
G-M3	N002A08x000M	NUT, hexagon		1	
G-M4	S510P12x000P	RING, retaining-C type		1	SRS-12
G-M5	W220R10x000M	WASHER, spring lock		1	

FRAME - FENDER

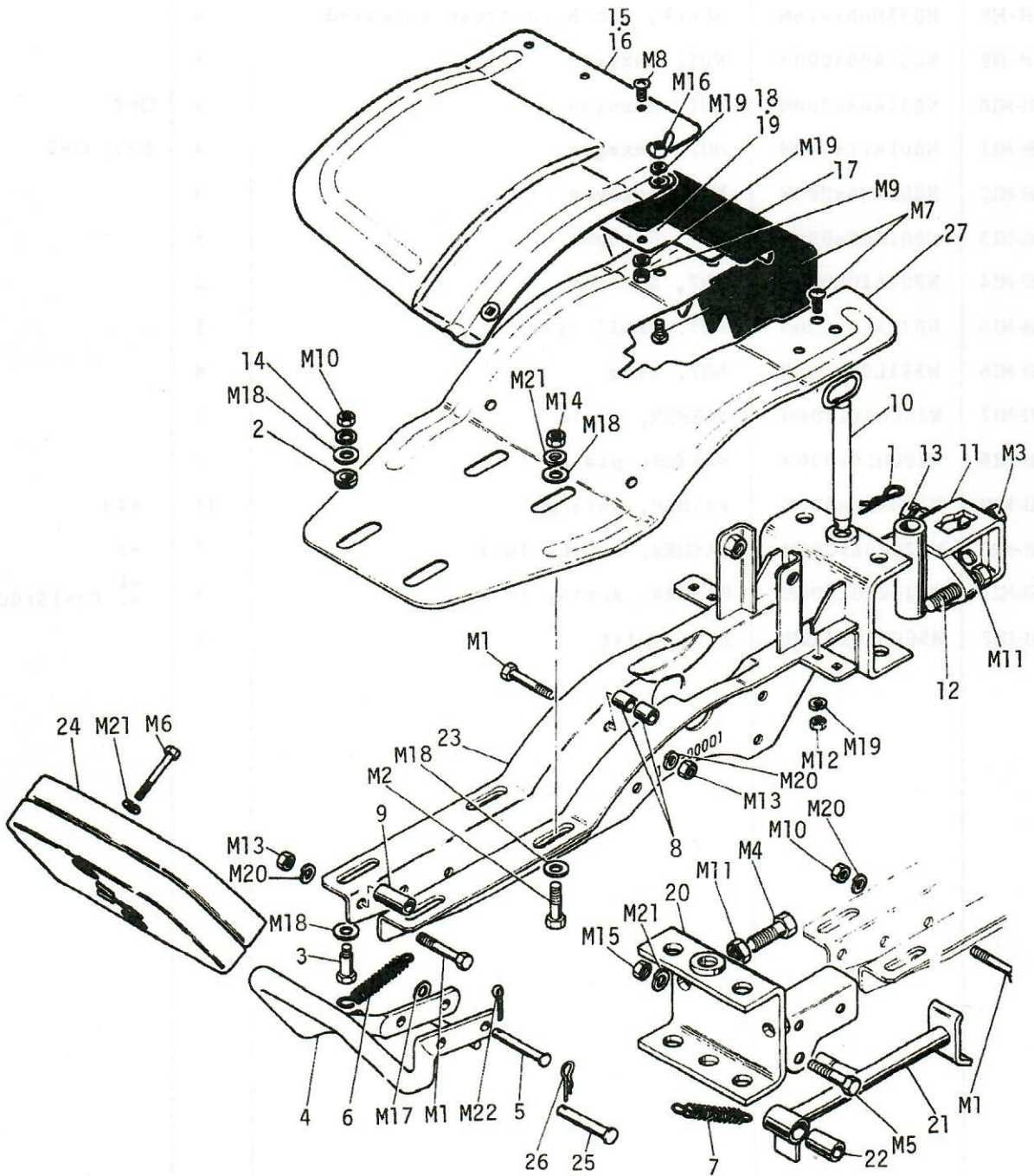
-EK



H. FRAME & FENDER

NO.	PARTS NO.	PARTS NAME	Q'TY	REMARKS
H - 1	A906288	CLIP A	1	60346
H - 2	A906298	RUBBER, cushion	2	#3601~
H - 3	A906299	BOLT, engine set	2	#3601~
H - 4	A906308	STAND	1	M54-412a
H - 5	A906309	PIN, stand	1	M54-413
H - 6	A906310	SPRING, stand	1	M9-417
○H - 7	A906310A	SPRING, stand	1	K-419
H - 8	A906311	COLLAR	8	M23-3416
H - 9	A906312	COLLAR	1	M23-415
H-10	A906333	PIN, king	1	M26-414a
H-11	A906334	HITCH ASS'Y	1	△ ass'y M9-1411a
△H-12	A90633403	BOLT, hexagon head	2	M12x60
△H-13	A90633405	BOLT, hexagon head	1	M12x40
H-14	A906376	WASHER	2	#3601~
H-15	A906380-1	FENDER ASS'Y, extension (left)	1	*ass'y Option M-512-L
H-16	A906380-9	FENDER ASS'Y, extension (right)	1	*ass'y Option M54-512-R
*H-17	A906384	SHEET, rubber	2	Option M23-514a
*H-18	A906387	PLATE, setting (left)	1	Option M23-513-L
*H-19	A906388	PLATE, setting (right)	1	Option M23-513-R
H-20	A906395	HITCH ASS'Y, front	1	○ass'y Option (A906396:M54-414)
○H-21	A906397	STAND	1	Option M54-415
○H-22	A906398	PIPE	1	Option M54-416
H-23	A906431	FRAME	1	#30601~ old No. A906305 M54-417
H-24	A999422	WEIGHT FRONT	1	10Kg © ass'y
H-25	A999423	PIN, stand	1	A906309
H-26	H50166	CLIP	1	
H-27	A906306	FENDER	1	M54-511
○H-M1	B001A08x050M	BOLT, hexagon head	7	○=2
H-M2	B001A10x045M	BOLT, hexagon head	2	
△H-M3	B001A12x030M	BOLT, hexagon head	2	
○H-M4	B001A12x035M	BOLT, hexagon head	2	
○H-M5	B022A10x045M	BOLT, small type	1	

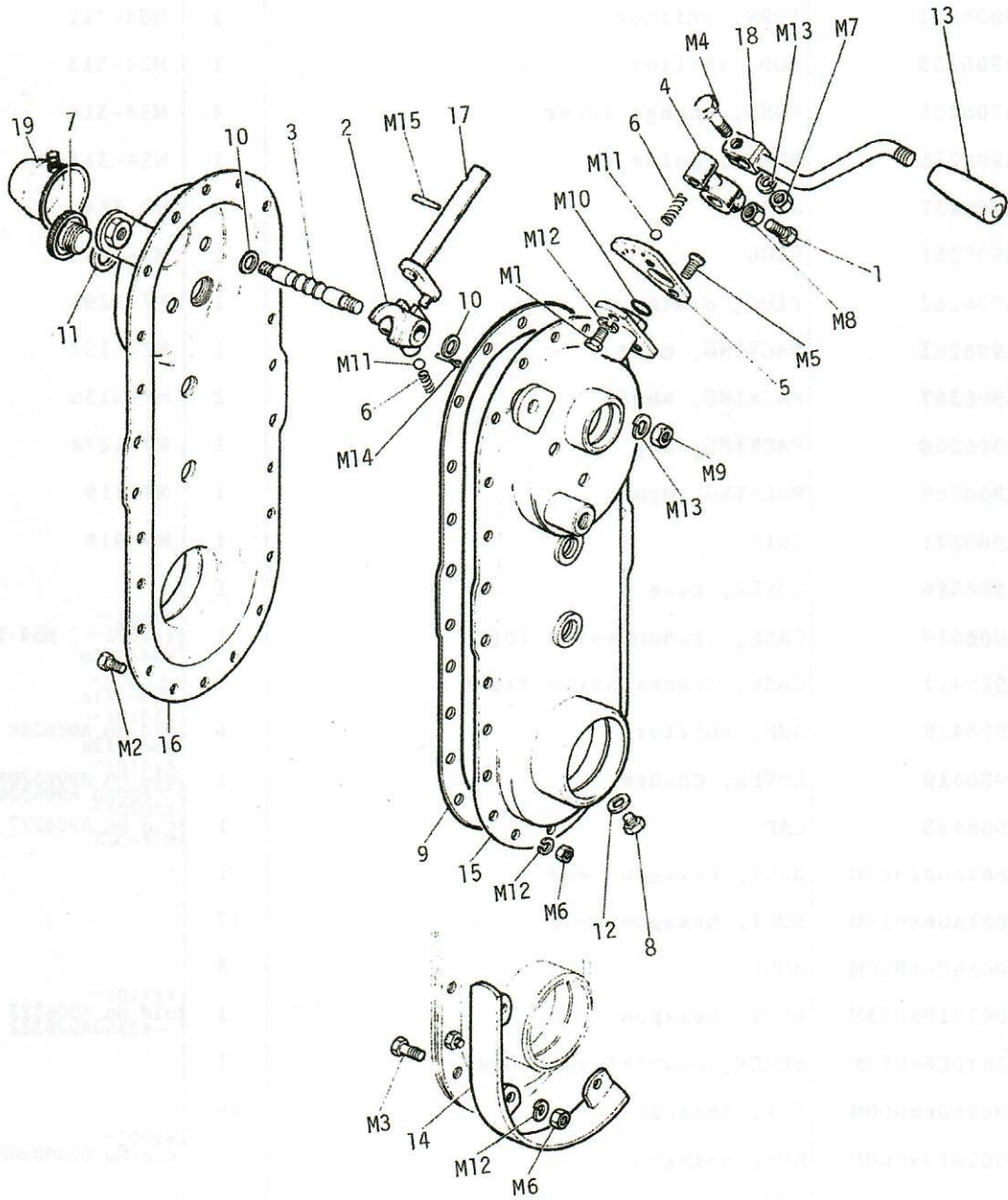
H. FRAME & FENDER



H. FRAME & FENDER

NO.	PARTS NO.	PARTS NAME	Q'TY	REMARKS
◎H-M6	B022A10x060Z	BOLT, small type	2	F100010060
*H-M7	B301D06x014M	BOLT, round head-square neck	8	*=4
*H-M8	H051D06x016M	SCREW, pan head-cross recessed	6	
*H-M9	N001A06x000M	NUT, hexagon	6	
○H-M10	N001A08x000M	NUT, hexagon	4	○=2
△H-M11	N001A12x000M	NUT, hexagon	4	△=2 ○=2
H-M12	N002A06x000M	NUT, hexagon	4	
H-M13	N002A08x000M	NUT, hexagon	5	
H-M14	N002A10x000M	NUT, hexagon	2	
○H-M15	N022A10x000M	NUT, small type	1	
*H-M16	N351L06x000M	NUT, wing	4	
II-M17	W200H08x000M	WASHER, plain	1	
H-M18	W200H10x000M	WASHER, plain	7	
*II-M19	W220R06x000M	WASHER, spring	14	=10
○H-M20	W220R08x000M	WASHER, spring lock	7	=2
◎H-M21	W220R10x000M	WASHER, spring lock	5	=1 =2 F251510000
II-M22	W500H30x020M	PIN, split	1	

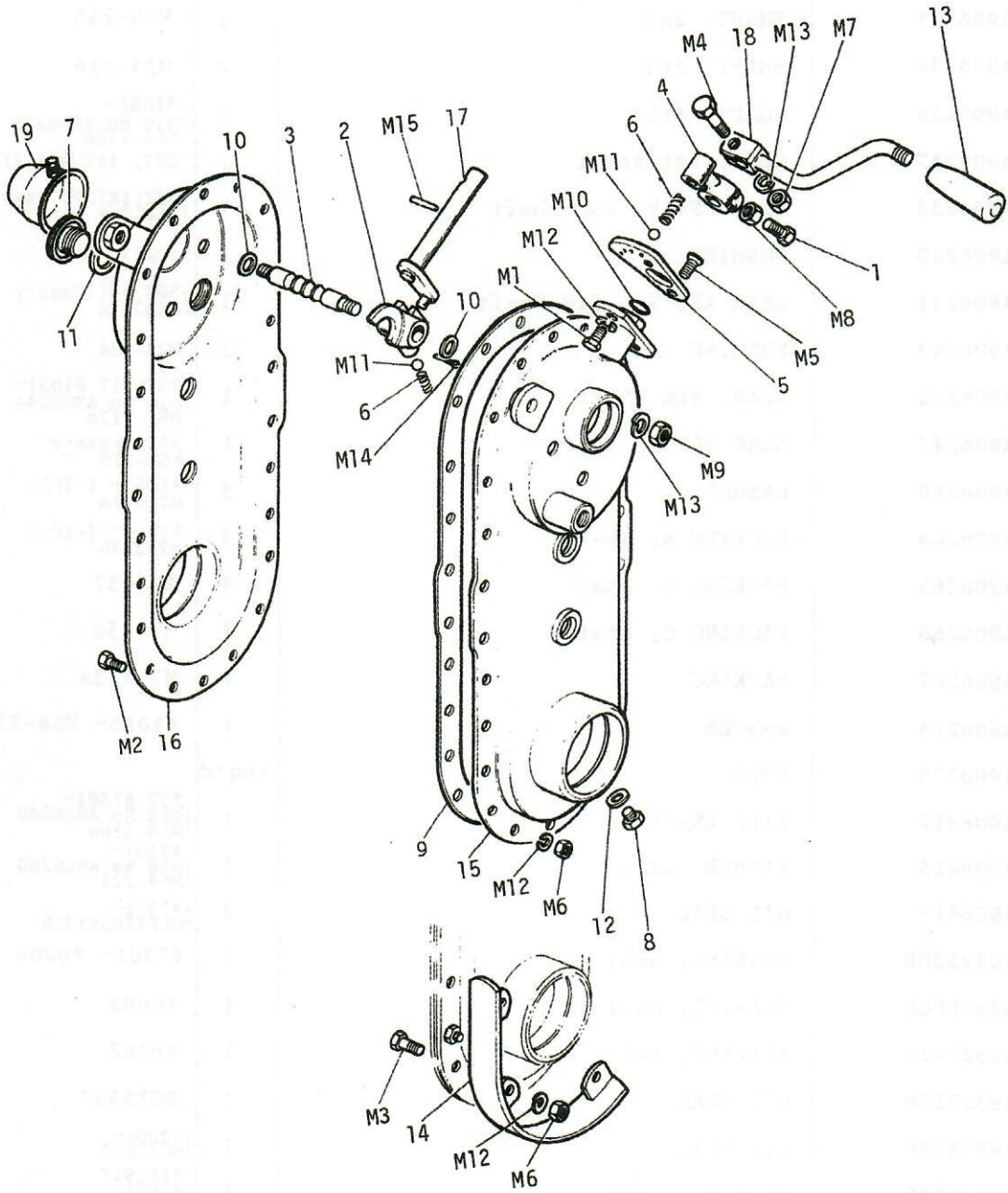
J. TRANSMISSION ASS'Y



J. TRANSMISSION ASS'Y

NO.	PARTS NO.	PARTS NAME	Q'TY	REMARKS
J - 1	A906223	BOLT	1	#50 old No. B001A08x016M M54-317
J - 2	A906252	FORK, shifter	1	M54-311
J - 3	A906253	ROD, shifter	1	M54-313
J - 4	A906255	ROSS, change lever	4	M54-316
J - 5	A906256	PLATE, guide	1	M54-314
J - 6	A906257	SPRING	2	M7-314
J - 7	A906261	PLUG	1	M7-128a
J - 8	A906262	PLUG, drain	1	M7-129a
J - 9	A906263	PACKING, case	1	M23-152
J-10	A906267	PACKING, shaft	2	M7-313a
J-11	A906268	PACKING, cap	1	M7-127a
J-12	A906269	PACKING, drain	1	M7-118
J-13	A906321	GRIP	1	M7-918
J-14	A906386	COVER, case	1	
J-15	A906410	CASE, transmission left	1	#7301~ [(#2001~) M54-111a M54-111a
J-16	A906411	CASE, transmission right	1	#7301~ M54-111a
J-17	A906418	ARM, shifter	1	#14101~ old No. A906254 M54-312a
J-18	A906419	LEVER, change	1	#14101~ old No. A906320A ~#2000 A906320
J-19	A906433	CAP	1	#30601~ old No. A906277 M54-225
J-M1	B001A06x012M	BOLT, hexagon head	1	
J-M2	B001A06x014M	BOLT, hexagon head	17	
J-M3	B001A06x016M	BOLT	3	
J-M4	B001A10x035M	BOLT, hexagon head	1	#14101~ old No. A906323 ~#2300A906322
J-M5	H201D06x012M	SCREW, counter sunk head	1	
J-M6	N002A06x000M	NUT, hexagon	20	
J-M7	N001A10x000M	NUT, hexagon	1	#2001~ old No. 02A08x000M
J-M8	N011A08x000M	NUT, hexagon	1	
J-M9	N012A10x000M	NUT, jam type	2	
J-M10	S655W12	O RING	1	OR-12
J-M11	S800P07	BALL, steel	2	5/16" SB-2500
J-M12	W220R06x000M	WASHER, spring lock	21	
J-M13	W220R10x000M	WASHER, spring lock	3	#2001~ 1pc old No. W220R08x000M

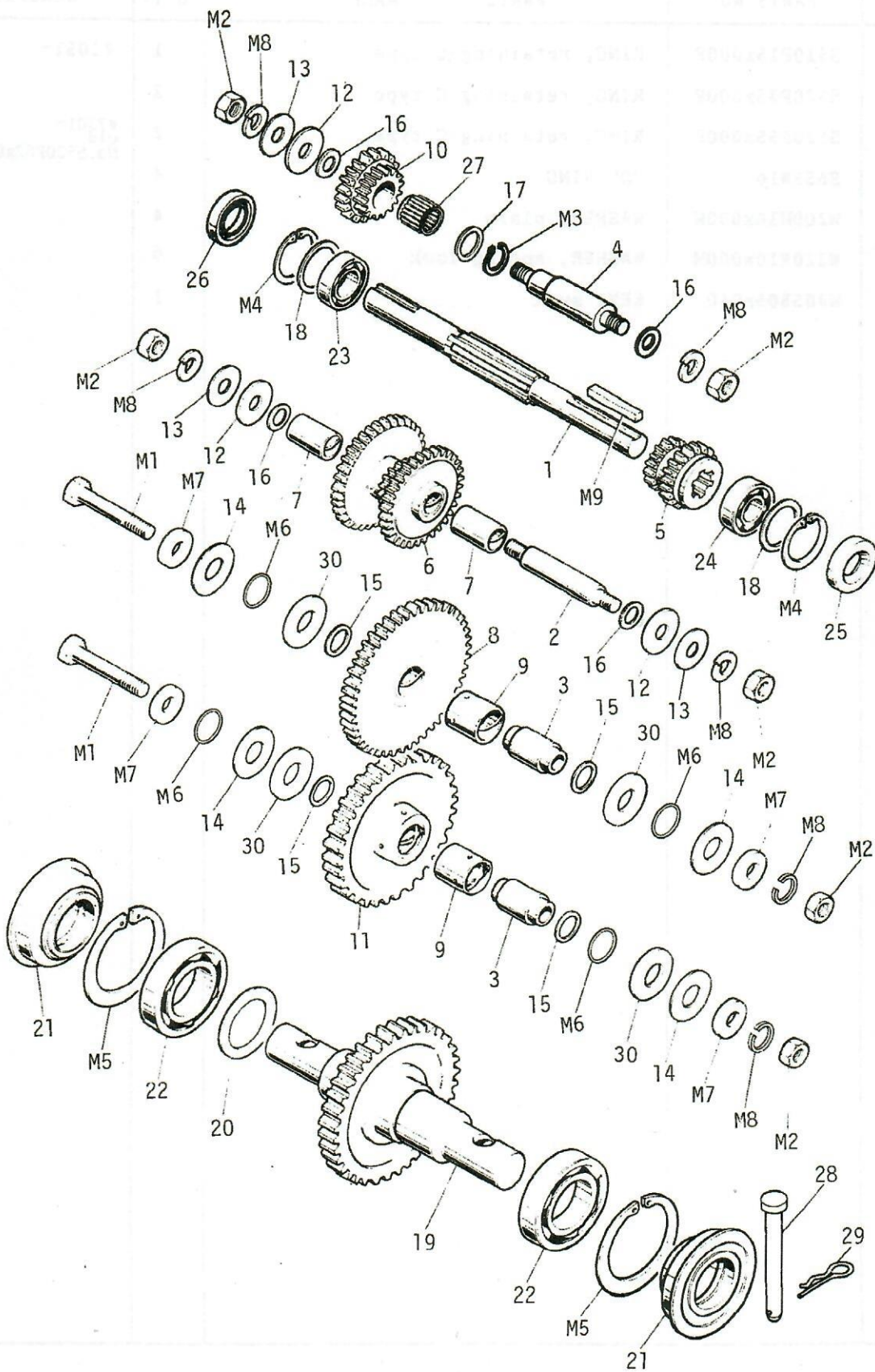
J. TRANSMISSION ASS'Y



J. TRANSMISSION ASS'Y

NO.	PARTS NO.	PARTS NAME	Q'TY	REMARKS
J-M14	W500D30x020M	PIN, split	1	STP-3020
J-M15	W550A35x025	PIN, taper	1	TP-3525

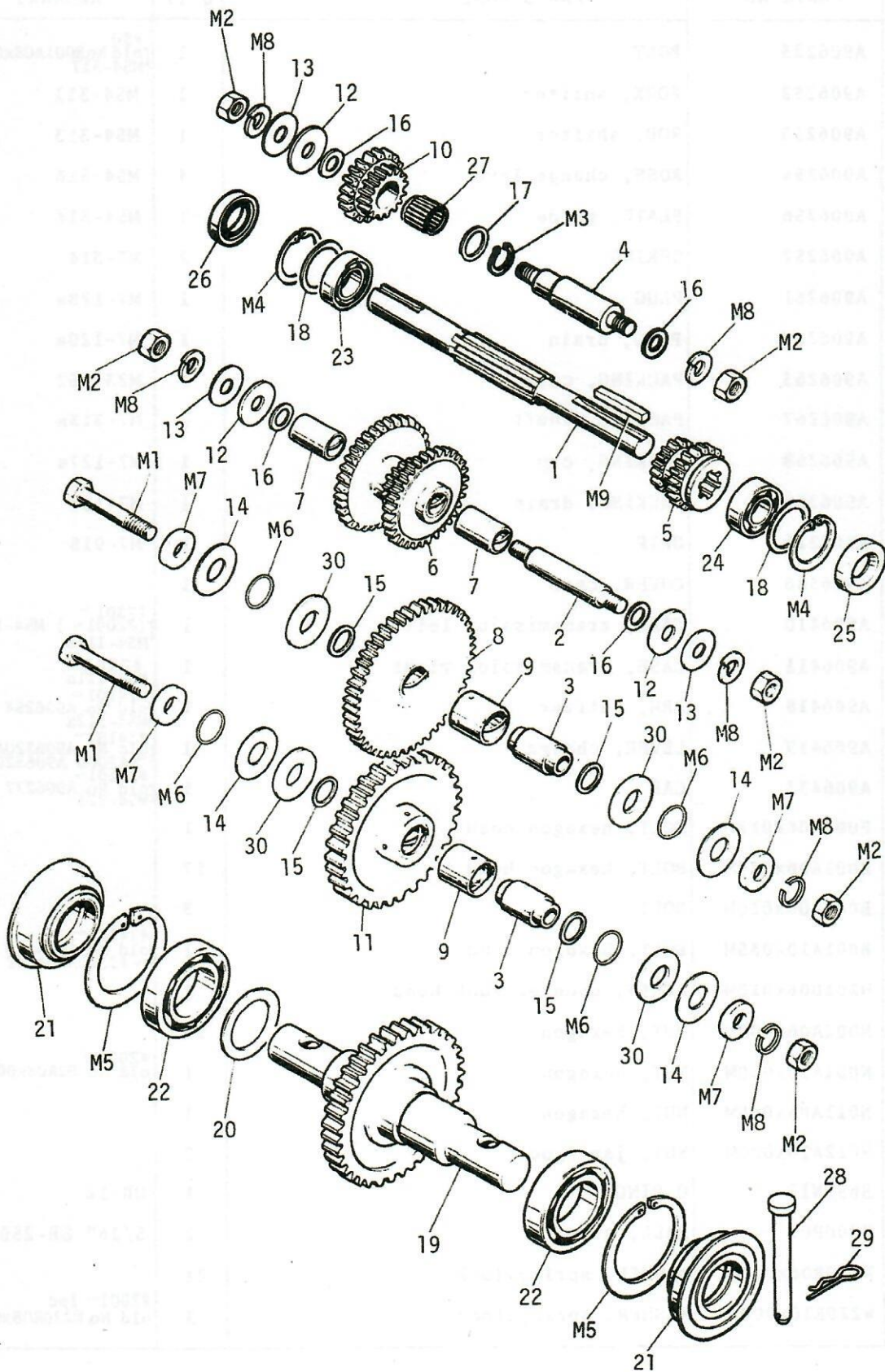
K. TRANSMISSION ASS'Y



K. TRANSMISSION ASS'Y

NO.	PARTS NO.	PARTS NAME	Q'TY	REMARKS
K - 1	A906232	SHAFT, main	1	M54-211
K - 2	A906233	SHAFT, 2nd	1	M23-255
K - 3	A906234	SHAFT, 3rd	2	M23-216
K - 4	A906236	SHAFT, 4th	1	#1051~ [old No. A906235 M54-218a
K - 5	A906237	GEAR, 1st shaft	1	20T, 14Y M54-212
K - 6	A906238	GEAR ASS'Y, 2nd shaft	1	32T, 14T, 37T ass'y M54-213
*K - 7	A906240	BUSHING	2	M54-219
*K - 8	A906241	GEAR ASS'Y, 3rd shaft	1	50T, 13T ass'y M54-214
⊙K - 9	A906243	BUSHING	2	M23-224
K-10	A906245	GEAR, 4th shaft	1	15T, 21T #1051~ [old No. A906244 M54-217a
K-11	A906247	GEAR ASS'Y, idler	1	33T ass'y M54-215
K-12	A906258	WASHER	3	#1051~ (-1PC) M7-217a
K-13	A906264	PACKING A, shaft	3	#1051~ (-1PC) M7-234b
K-14	A906265	PACKING B, shaft	4	M7-237
K-15	A906266	PACKING C, shaft	4	M7-238
K-16	A906267	PACKING	4	M7-313a
K-17	A906274	WASHER	1	#1050~ M54-220
K-18	A906275	SHIM		req'd
K-19	A906412	AXLE ASS'Y	1	35T #7301~ [old No. A906249 M54-216a
K-20	A906415	WASHER, axle	1	#7301~ [old No. A906260 M54-221
K-21	A906417	OIL SEAL	2	#7301~ [OLFY30551319
K-22	A932500B	BEARING, ball	2	#7301~ #6006
K-23	A932500K	BEARING, ball	1	#6003
K-24	A932502A	BEARING, ball	1	#6202
K-25	A932519R	OIL SEAL	1	SC15357
K-26	A932519S	OIL SEAL	1	#2001~ [SC17357
K-27	A932598E	BEARING, needle	1	#151917 [#1051~ Old part:#15913
K-28	A906287	PIN	2	
K-29	A906288	CLIP	2	
K-30	M67-219	WASHER A	4	
K-M1	B022A10x055M	BOLT, small type	2	
K-M2	N012A10x000M	NUT, jam type	6	

K. TRANSMISSION ASS'Y



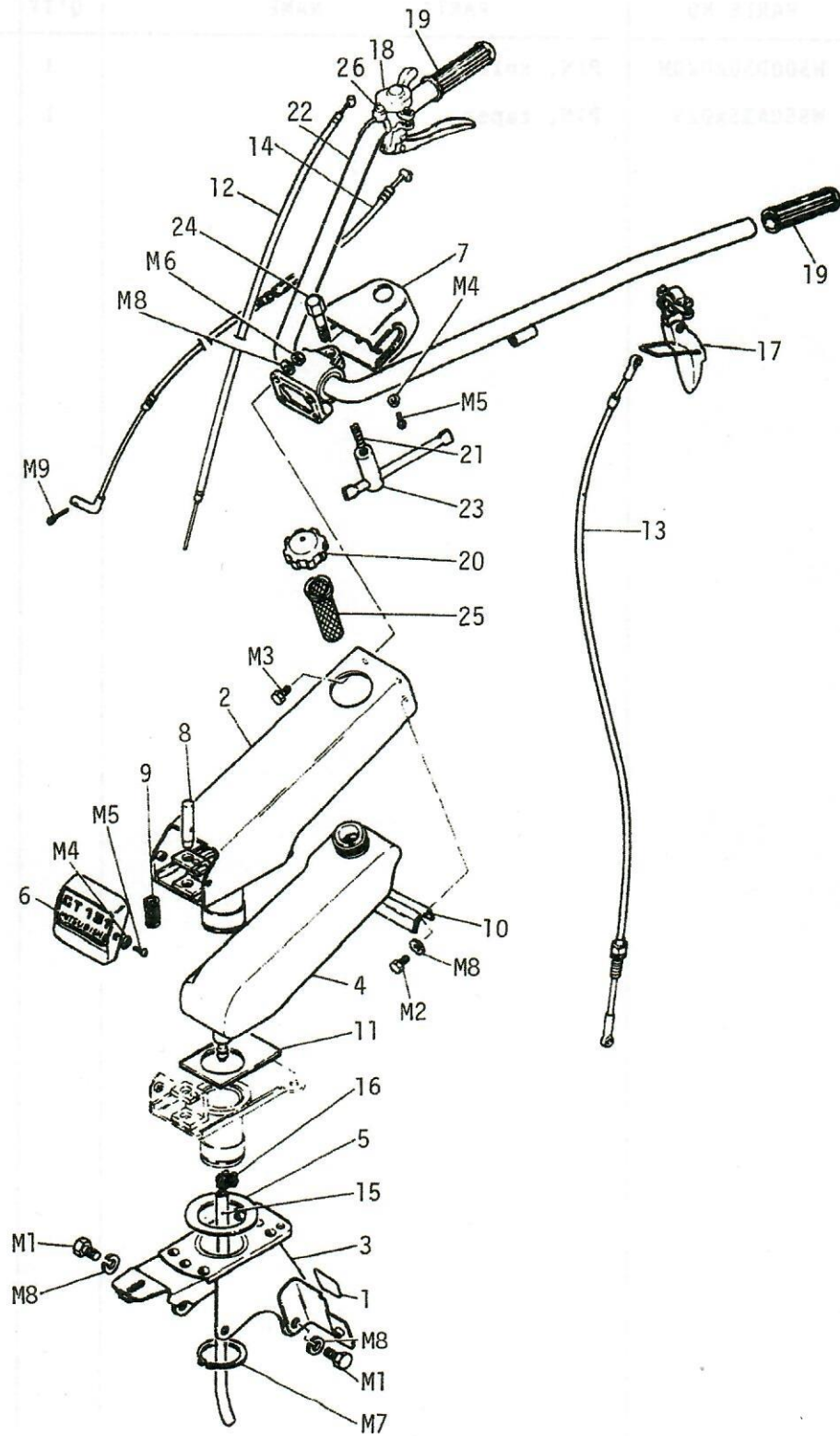
K. TRANSMISSION ASS'Y

NO.	PARTS NO.	PARTS NAME	Q'TY	Remarks
K-M3	S510P15x000P	RING, retaining-C type	1	#1051~
K-M4	S520P35x000P	RING, retaining-C type	2	
K-M5	S520P55x000P	RING, retaining-C type	2	#7301~ old
K-M6	S655W16	"O" RING	4	No.S520P62x000P
K-M7	W200H10x000M	WASHER, plain	4	
K-M8	W220R10x000M	WASHER, spring lock	6	
K-M9	W405B05x040	KEY, sunk	1	

L. TOOL ASS'Y

NO.	PARTS NO.	PARTS NAME	Q'TY	REMARKS
L - 1	FN15690	SPANNER, box	1	10x12
L - 2	FR42286	HANDLE	1	
L - 3	FR42296	SPANNER, box	1	19x21
L - 4	FR43077	DRIVER	1	+
L - 5	FR50259	SPANNER, open	1	12x14
L - 6	FR64551	BAG, tool	1	
L-M1	B001A12x020M	BOLT, hexagon head	2	
L-M2	R001C10x013M	SPANNER, open end	1	
L-M3	R001C17x019M	SPANNER, open end	1	
L-M4	W220R12x000M	WASHER, spring lock	2	

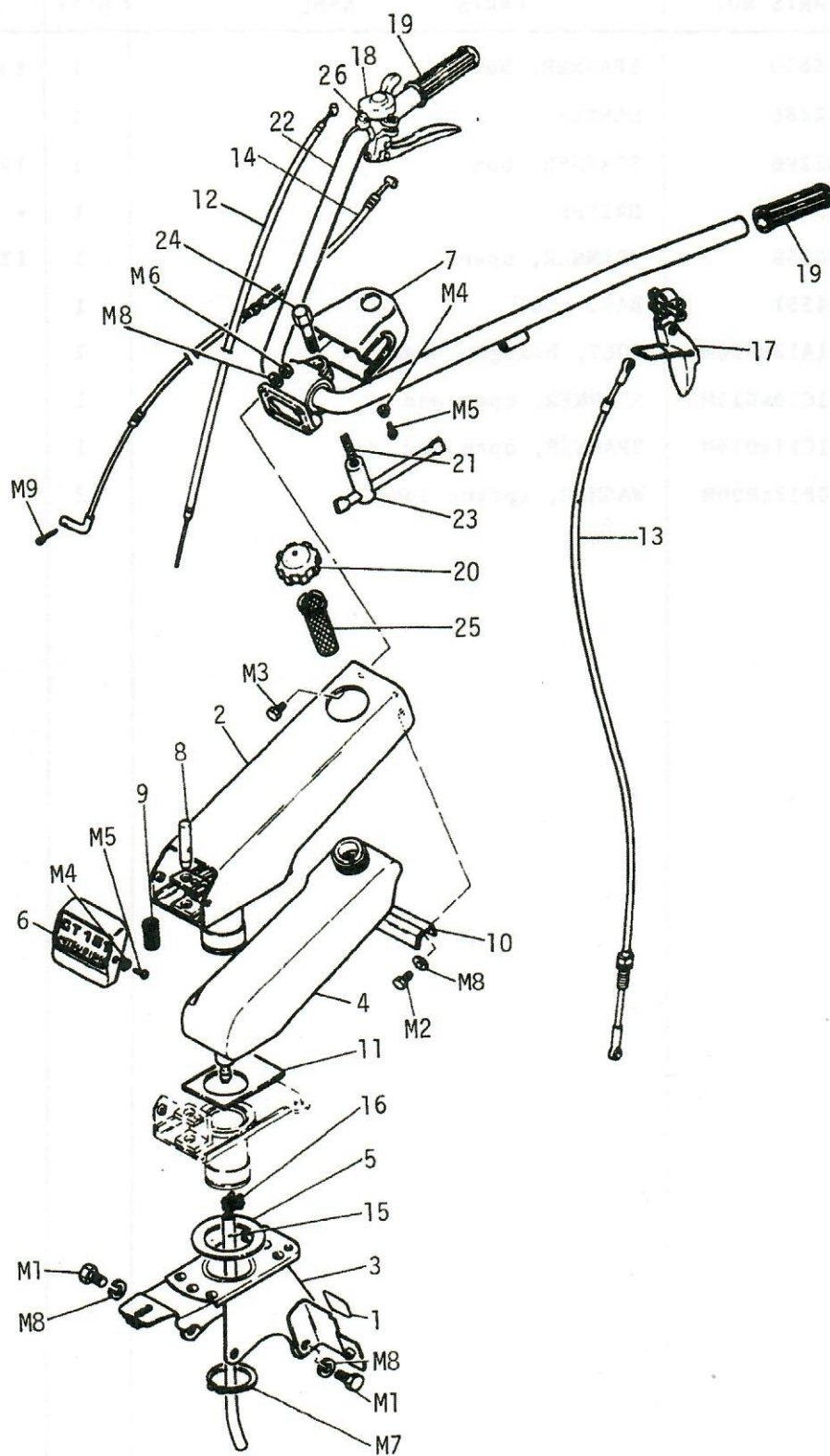
M. HANDLE ASS'Y



M. HANDLE ASS'Y

NO.	PARTS NO.	PARTS NAME	Q'TY	REMARKS
M - 1	A906326	LABEL B	1	
M - 2	A906343	CHASSIS, handle	1	
M - 3	A906344	BRACKET, handle	1	
M - 4	A906345	TANK, fuel	1	
M - 5	A906346	PLATE	1	
M - 6	A906347	COVER, front	1	
M - 7	A906348	COVER, rear	1	
M - 8	A906351	PIN	1	
M - 9	A906352	SPRING	1	
M-10	A906353	SUPPORT, tank	1	
M-11	A906354	SEAT	1	
M-12	A906356	WIRE, throttle	1	M49-822
M-13	A906357	WIRE A, bowden	1	M54-612
M-14	A906358	WIRE B, bowden	1	M54-611
M-15	A906359	PIPE, fuel	1	
M-16	A906360	CLIP	2	
M-17	A906361	LEVER, clutch	1	
M-18	A906362	LEVER, handle shift	1	
M-19	A906363	GRIP	2	60420
M-20	A906365	CAP ASS'Y	1	
M-21	A906367	SPRING	1	
M-22	A906370	HANDLE	1	#5001~ old No.A906341 (#7001~)
M-23	A906372	LEVER, clamp	1	#5001~
M-24	A906374	BOLT	1	old No.A906349 old No.A906364
M-25	BG03560	FILTER, fuel	1	
M-26	M54-1311	SWITCH, stop	1	
M-M1	B001A10x020M	BOLT, hexagon head	3	
M-M2	B022A10x016M	BOLT, small type	2	
M-M3	B022A10x025M	BOLT, small type	2	#5001~
M-M4	F257506000	WASHER, finish	4	
M-M5	H111D05x012M	SCREW, oval countersunk head-cross recessed	4	
M-M6	N022A10x000M	NUT, small type	2	#5001~

M. HANDLE ASS'Y



M. HANDLE ASS'Y

NO.	PARTS NO.	PARTS NAME	Q'TY	REMARKS
M-M7	S510P60x000P	RING, retaining C type	1	
M-M8	W220R10x000M	WASHER, spring lock	7	
M-M9	W500D16x012M	PIN, split	1	