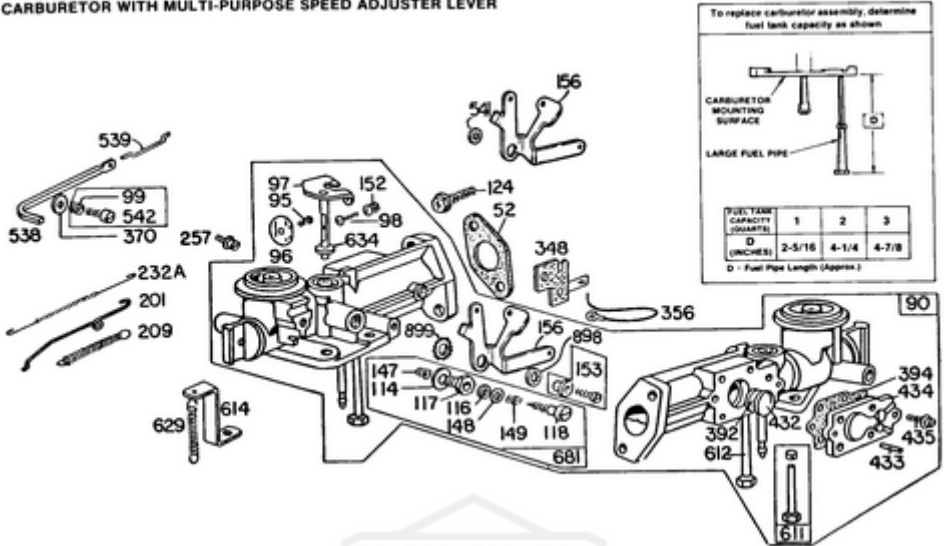
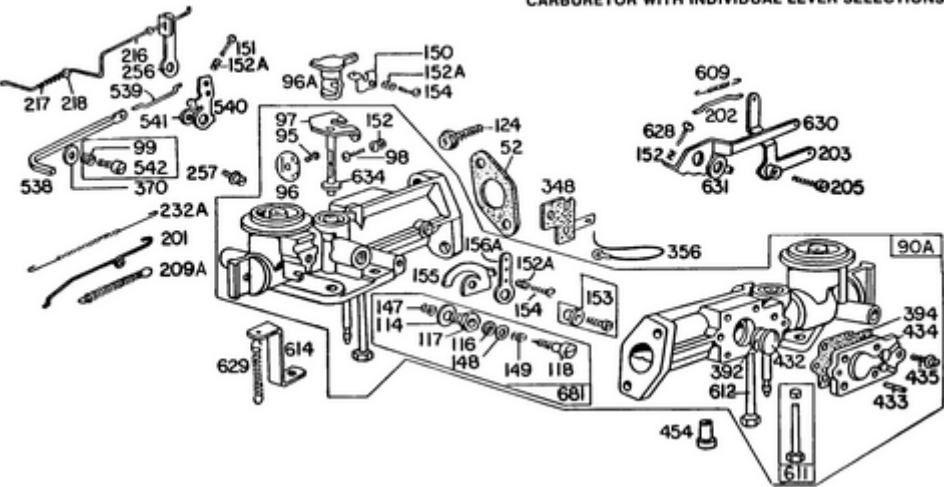


CARBURETOR WITH MULTI-PURPOSE SPEED ADJUSTER LEVER



GENERAL NOTE: WHEN ORIGINAL CARBURETOR DOES NOT MATCH THE ABOVE ILLUSTRATION (REF. 90). ORDER PARTS FROM LOWER ILLUSTRATION (REF. 90A).

CARBURETOR WITH INDIVIDUAL LEVER SELECTIONS



Copyright © Briggs & Stratton, LLC. All rights reserved.

Ref #	Part #	Description	Qty	Context Note	Foot Note
52	27355	GASKET, Intake		(2) Included in Gasket Set-Part No. 297275	
90A	296784	CARBURETOR		(Manual Choke) (2 Quart Tank)	
90	393975	CARBURETOR		(1 Quart)	
90	393976	CARBURETOR		(Manual Choke) (2 Quart Tank) All Carburetors listed under Ref. 90 use 222955 Ref. 156 Lever.	
90	393977	CARBURETOR		(Manual Friction) (3 Quart Tank)	
95	93499	SCREW		(Throttle Valve)	
96A	211067	LINK, Throttle			
96	211203	VALVE, Throttle			
97	297961	SHAFT, Throttle			
98	93524	SCREW		(5-40 X 1/2)	
99	393586	SCREW/SPRING, Governor Speed			
114	66594	WASHER, Sealing		(Needle Valve)	
116	65978	SEAL, O-Ring		(Needle Valve)	
117	230590	NUT			
118	23433	VALVE, Float Needle			
124	93357	SCREW			
147	230591	SEAT, Needle Valve			
148	22235	WASHER			
149	26336	SPRING, Needle Valve			
150	220105	LINK, Mechanical Governor			
151	93350	SCREW			
152A	260575	SPRING, Throttle Return			
152	260746	SPRING, Throttle Return			
153	230531	SCREW			
153	298031	SCREW		(Carburetor Lever)	
153	93177	SCREW		(Bell Crank)	
153	93342	SCREW			
154	93527	SCREW		(5-40 X 5/8)	
155	220107	LEVER, Speed Adjuster			
156A	220949	LEVER, Control		For 220952 Lever-Speed Adjuster, see Ref. No. 256	
156	222955	LEVER, Control			
201	260898	LINK, Choke			
202	260563	LINK, Throttle		Used only on Mechanical Governor	
203	297069	CRANK, Bell			
205	230671	SCREW		(Bell Crank)	

Ref #	Part #	Description	Qty	Context Note	Foot Note
209A	260041	SPRING, Governor		Used After Code Date 6602111	
209	260041	SPRING, Governor			
216	260449	LINK, Choke			
217	260189	SPRING, Friction			
218	221198	WASHER			
232A	260585	SPRING/LINK, Mechanical Governor		Used Before Code Date 6602121	Do Not Use with 260898 Gov. Link (Ref. 201)
256	220952	LEVER, Speed Adjuster			Do Not Use with 260898 Gov. Link (Ref. 201)
257	93105	SCREW			Do Not Use with 260898 Gov. Link (Ref. 201)
257	93543	SCREW		(10-32 X 3/8)	Do Not Use with 260898 Gov. Link (Ref. 201)
348	296110	SWITCH, Stop			
356	296185	WIRE, Stop			
356	391115	WIRE, Stop			
370	66432	WASHER			
392	260455	SPRING, Pump Diaphragm			
394	270026	DIAPHRAGM, Carburetor			
432	221377	CAP, Spring			
433	93265	PIN, Locating			
434	210959	COVER, Diaphragm			
435	93141	SCREW		(Diaphragm Cover)	
454	296178	FILTER, Fuel		(3/16 O.D. Brass Pipe)	
454	393768	TUBE, Pick Up		(1/8 O.D. Brass Pipe)	
538	260683	ROD, Control		(Square Rod) For Round Wire Rod order: 260560 Rod-Speed Control	on cables molded into ignition coil
539	260684	LINK, Mechanical Governor		(Square Rod)	on cables molded into ignition coil
540	220678	LEVER, Control			on cables molded into ignition coil
541	22398	WASHER			on cables molded into ignition coil
542	221372	CLIP, Control Rod		Used only with Round Wire Control Rod	on cables molded into ignition coil
542	393586	SCREW/SPRING, Governor Speed			on cables molded into ignition coil
542	93686	SCREW		(10-32 X 5/8)	on cables molded into ignition coil
609	260564	SPRING, Throttle Return		Used on Mechanical Governor	on cables molded into ignition coil

Ref #	Part #	Description	Qty	Context Note	Foot Note
611	391813	TUBE, Pick Up		(2 And 3 Quart Tanks)	on cables molded into ignition coil
612	296811	TUBE, Pick Up			on cables molded into ignition coil
614	221384	BRACKET, Rod			on cables molded into ignition coil
628	93149	SCREW		(5-40 X 3/8)	on cables molded into ignition coil
629	260546	SPRING, Throttle Return		(Throttle Return)	on cables molded into ignition coil
630	221425	CONTROL, Throttle			on cables molded into ignition coil
631	221427	WASHER		(Throttle)	on cables molded into ignition coil
634	270167	SEAL, Choke/Throttle Shaft		(Felt)	on cables molded into ignition coil
681	299060	VALVE, High Speed		(Threaded)	on cables molded into ignition coil
898	92507	WASHER			on cables molded into ignition coil
899	93397	WASHER			on cables molded into ignition coil