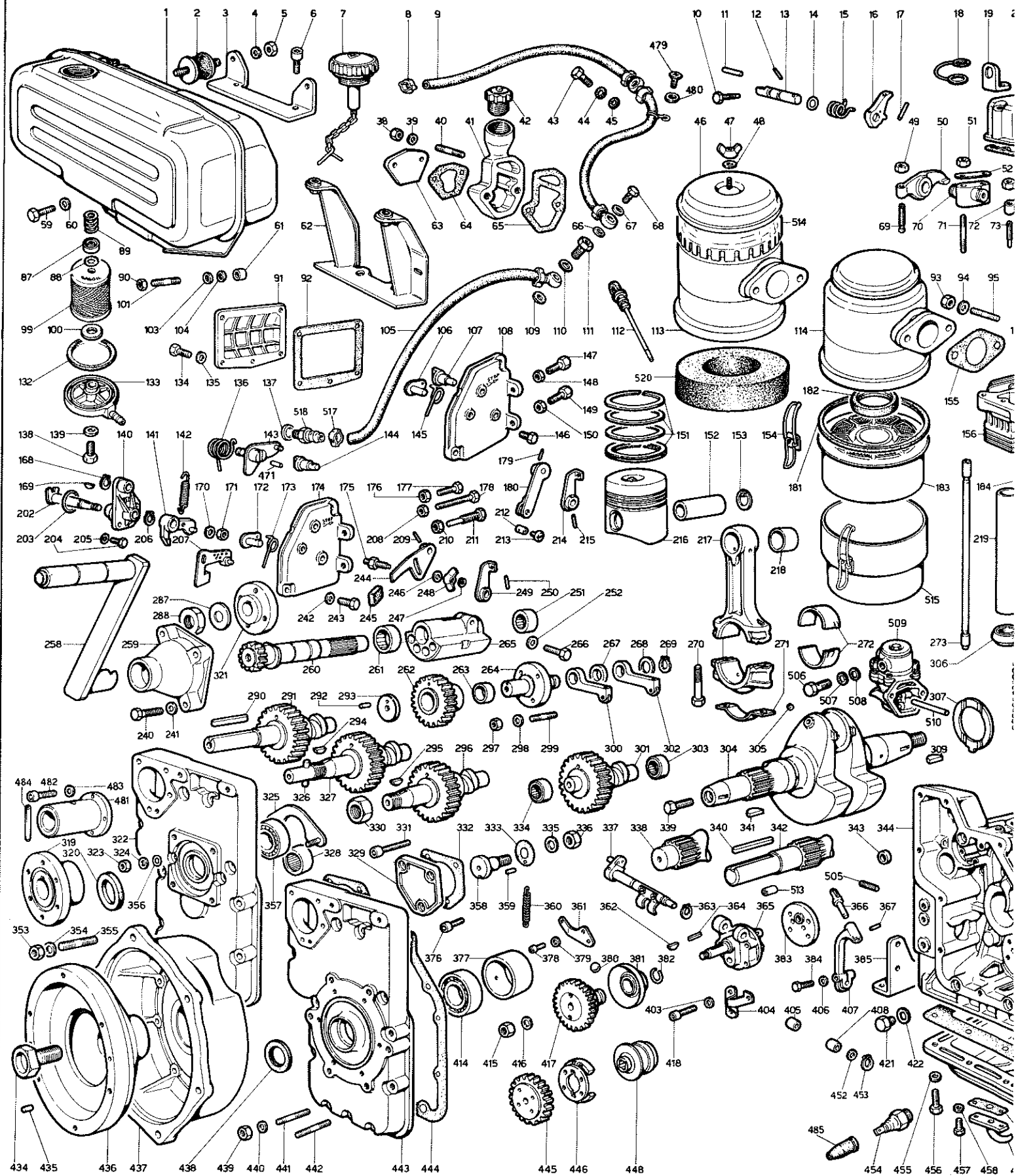


**RICAMBI
PIECES
SPARE PARTS
ERSATZTEILE
REPUESTOS**

**RICAMBI PER MOTORE STANDARD.
PER APPLICAZIONI SPECIALI CONSULTARE
IL CATALOGO PRESSO I CENTRI ASSISTENZA
E RICAMBI.**

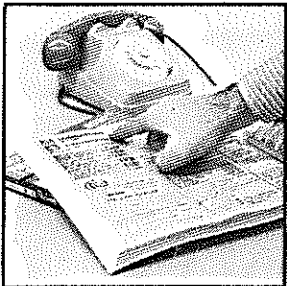
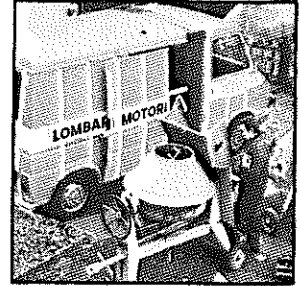
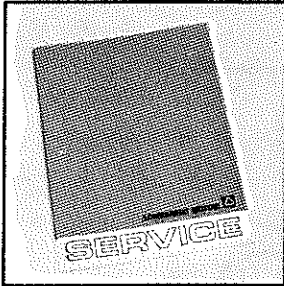
**PIECES POUR DES MOTEURS STANDARD.
POUR LES ADAPTATIONS CONSULTER
LE CATALOGUE AUPRES
DES AGENTS SERVICE.**

**SPARE PARTS FOR ST
FOR SPECIAL APPLICA
CATALOG AT SERVICE**



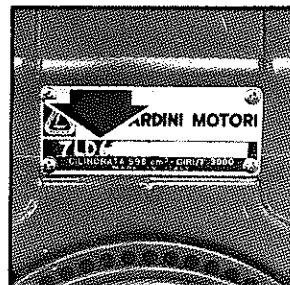
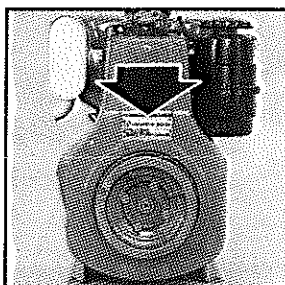
SERVICE

Per assistenza e ricambi rivolgersi a stazioni di servizio autorizzate Lombardini. N. tel. su libretto service e su pagine gialle.
 Pour toute exigence de service après vente et pièces détachées, s'adresser aux Stations de service du réseau Lombardini. N. de téléphone indiqué sur brochure relative au service après vente et annuaire catégorique.
 For spare parts and after sale assistance contact authorized Lombardini service centers. Tel. No. appears on service booklet and telephone directory.
 Für Service und Ersatzteile bitten wir, sich an autorisierte Werkstätte zu wenden. Telef. Nummer laut unserem Service - Büchlein und Fernsprechbuch.
 Para asistencia y repuestos, dirigirse a las estaciones de servicio autorizadas Lombardini. N. Tel. su libretto service y su hojas amarillas.

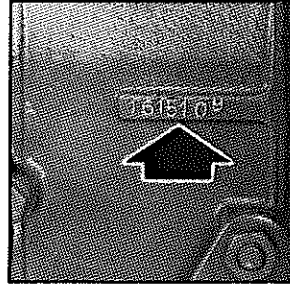
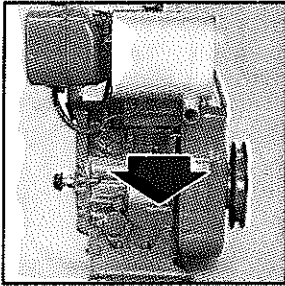
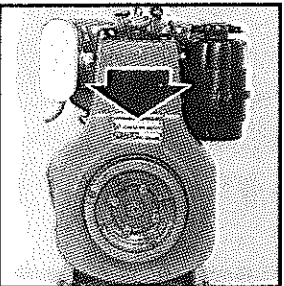


ORDINI RICAMBI
COMMANDES PIÈCES
PART ORDERS
E-TEIL BESTELLUNGEN
PEDIDOS DE REPUESTOS

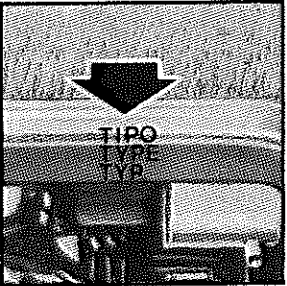
TIPO MOTORE
TYPE DE MOTEUR
ENGINE TYPE
MOTORTYP
TIPO DEL MOTOR



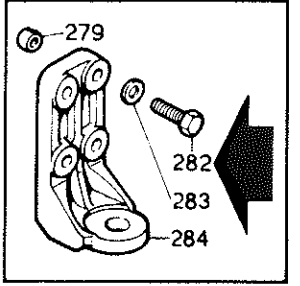
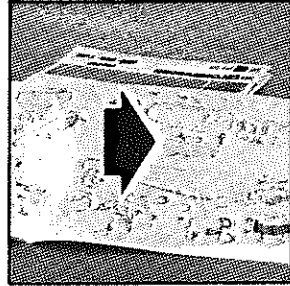
MATRICOLA
MATRICULE
SERIAL NUMBER
MOTORENNUMMER
NUMERO DEL MOTOR



TIPO DELLA MACCHINA
TYPE DE MACHINE
EQUIPMENT TYPE
MASCHINENTYP
MODELO DE LA MAQUINA



MATRICOLA del ricambio
REFERENCE de la pièce
SPARE PART number
BESTELNUMMER des Teiles
REFERENCIA del repuesto



LOMBARDINI

FABBRICA ITALIANA MOTORI S.p.A.
 42100 REGGIO EMILIA, ITALIA - GAS. POST. 105 - Tel. (0522) 58.011 - Telegr. LOMBARMOTOR - Telex 530003 MOTIOM I

B&S LOMBARDINI DIESEL INC. 3402 Oakliff Road B-2 Doraville, GA 30040, USA
 LOMBARDINI FRANCE Zone Industr. Nord Arnas - Villefranche S/Saône - France
 LOMBARDINI MOTOREN Genfer Str. 11 - 6 Frankfurt/Main 58, Deutschland
 LOMBARDINI MOTORES Zona Cova Solera - Rubí/Barcelona, España

Matricola 1-5302-070

Mod. 50202/4
01-12-1986
Subject to alteration
Printed in Italy

FIG. NO.	MATRICOLA PART NO.	Q.ta Q.ty	NOTE REMARKS	Gr. 7 Pag.02
1+7=	=710.8102.088 F C =720.8103.035 S C	1 1	SERBATOIO COMB./FUEL TANK std. 1.7 con fiss.elast./with el.mounting	
2	7100.8635.097 FV C 10	2	supporto antivib./vibr.isolator std.	
"	7200.8636.002 SV C	2	x fissaggio el./elastic mounting	
3	7100.8866.051 S AC	1	supporto/support	
4	9.7565.007 F C 10	2	rondella/washer	
5	9.3240.018 FV 10	2	dado/nut	
6	9.9732.074 S C 10	2	x serb./f.tank std. - M 8 X 1,25 X 20	
"	9.9730.024 DV C 10	2	x fiss.el./elast.mount -M 8 X 1,25 X 16	
7+	2830.9043.025 FV C	1	tappo serbatoio/tank cap	
8			
9	7100.9375.033 S C	1	tubo spurgo iniett./bleeding pipe	
10+	715.9820.080 S C 10	1	vite/screw	
11+	9.8430.009 S C 10	1	spina/locating pin	
12+	9.8430.057 D 10	1	spina/locating pin	
13+10+11+12+14+15+ 16+17+521=	=710.3348.027 FV C	1	DECOMPRESSIONE/DECOMPRESSION ASS.Y std. x 7LD600/F-665/F-740/F & optional per avviamento elettrico/manovella for electric/handle starting	
13+	710.1111.025 D	1	alberino/shaft	
14+	9.1200.034 FV C 10	1	anello OR/rubber oil seal	
15+	700.5680.069 S C 10	1	molla/spring	
16+	500.5270.078 F C	1	leva/lever	
17+	9.8430.023 S C 10	1	spina/locating pin	
18	500.3695.038 F C 10	1	filo/wire	
19+	904.8506.003 S AC 10	1	squadretta/angle bracket	
20	270.9055.003 FV C 10	1	tappo/starter cap	
21+19+24=	=710.2125.085 S IC	1	CAPPELLO SCATOLA BILANCIERI ROCKER BDX CAP	
22	270.9032.005 SV C	1	tappo rif.olio/filler oil cap	
23	9.1260.045 DV C 10	1	anello/ring	
24+	9.9731.040 D 10	2	vite/screw M 8 X 1,25 X 60	
25	9.6760.045 S 10	2	prigioniero/stud M 6 X 65 (80)	
26	9.3203.050 N 10	2	dado/nut	
27			
28	9.7565.007 F C 10	2	rondella/washer	
29	9.9732.074 S C 10	2	vite/screw M 8 X 1,25 X 20	
30+345=			CONVOGLIATORE/SHROUD std. (pred.avv.elettr./preset for el.start.)	
	=715.2568.062 D IC	1	x 7LD600/F-665/F	
	=745.2569.052 N	1	x 7LD740/F	
31+85=			VOLANO+CORONA/FLYWHEEL+CROWN GEAR per avv.el.e manov./handle & el.starting	
	=7150.9884.092 N	1	x 7LD600/F-665/F	
	=7150.9880.142 N	1	x 7LD740/F	
31+	715.9884.094 N	1	volano/flywheel std.7LD600/F-665/F-740/F	
32	725.5151.065 N AC	1	lamiera/panel std. 7LD600/F-665/F-740/F & optional avviam.manov./handle starting	
33	710.4570.018 DV C 10	1	guarniz.per avv.el./gasketfor el.starting	
"	725.4570.019 DV C 10	1	guarniz./gasket std. 7LD600/F-665/F-740/F & optional avviam.manov./handle starting	
34	9.9790.037 FV C 10	2	vite/screw M 6 X 1 X 8	
35	725.2920.091 D AC	1	cuffia/hood std. 7LD600/F-665/F-740/F & optional avviam.manov./handle starting	
36	9.7565.007 F C 10	4	rondella/washer	
37	9.1770.001 FV 10	4	bullone/bolt M 8 X 1,25 X 12	
38+	9.3203.047 FV C 10	2	dado/nut	
39+	9.4670.058 FV C 10	2	guarnizione/copper gasket	
40+	9.6780.025 D C 10	2	prigioniero/stud M 8 X 45 (57)	
41+	710.9580.019 S AC	1	tubo sfiato/breather tube	
42	270.9050.021 FV C	1	tappo sfiato/breather cap	
43	9.1901.029 FVIC 10	1	bullone raccordo/connection bolt	
44	9.4670.058 FV C 10	1	guarnizione/copper gasket	
45	9.4670.058 FV C 10	1	guarnizione/copper gasket	
46+	291.2125.056 F C	1	cappello prefiltro/prefilter cover	
47+	9.3200.002 FV C 10	1	dado/nut	
48+	9.7555.004 FV C 10	1	rondella/washer	
49+	9.3240.010 FV C 10	1	dado/nut	
50+49+53+55+56+69+ 70+72+73+74=	=710.4330.040 S C	1	GRUPPO BILANC.COMPLETO ROCKER ARM ASS.Y	

FIG. NO.	MATRICOLA PART NO.	Q.ta Q.ty	NOTE REMARKS	Gr. 7 Pag.03
51	9.3240.018 FV	10	2	dado/nut
52	904.6330.062 D C	10	1	piastrina/safety plate
53+	9.3240.010 FV C	10	2	dado/nut
54+	710.4400.019 FV C	50	1	guarnizione/gasket 0,50
55+	710.7701.022 S C	10	4	rondella/washer
56+	9.1240.007 FV C	10	2	anello sseger/snap ring
57	500.3790.042 S IC		1	flangia/flange
58	715.4776.051 N	50	1	0,30 std. x 7L600/F-665/F-740/F &
"	715.4776.052 N	50	1	0,20 optional avv.manov./handle start.
59	9.1770.002 FV	10	2	bullone/bolt M 8 X 1,25 X 16
60	9.7565.007 F C	10	2	rondella/washer
61	720.3527.004 F	10	2	distanziatore/spacer
62	7100.8866.049 D		1	supporto/support
63+	255.6700.012 S C		1	portina/pan
64+	560.4580.047 FVIC	50	1	guarnizione/gasket 1,00
"	560.4580.049 FV C	10	1	" " 0,50
"	560.4580.050 FV C	10	1	" " 0,80
65+	710.4580.046 DV C	10	1	guarnizione/gasket
66	9.4670.058 FV C	10	1	guarnizione/copper gasket
67	9.4670.058 FV C	10	1	guarnizione/copper gasket
68	9.1901.029 FVIC	10	1	bullone raccordo/connection bolt
69+	270.9850.002 F C	10	1	vite/screw
70	710.8655.005 D IC		1	supporto bilanc./rocker arm support
71	9.6780.084 F C	10	2	prigioniero/stud M 8 X 40 (52)
72+			vedi/see fig.No. 50+...
73+	904.9850.055 S C	10	1	vite/screw
74+	270.9850.002 F C	10	1	vite/screw
75	260.6410.018 F C	10	2	piattello/retainer with half-collets
76+117=				PORTAPOLVERIZZATORE COMPLETO
-710.6615.018 F C			1	NOZZLE HOLDER
77	9.1213.030 S C	10	1	anello/seal ring 7LD600/F-665/F-740/F
78	710.3617.024 S	10	1	fascetta/strip fixing
79	9.7565.013 S C	10	2	rondella/washer
80	715.6300.021 N		1	piastra/plate
81	283.1157.153 FVIC		1	alternatore/voltage alternator 12 V
82	710.6370.100 S AC		1	piastra avviam.ei./el.starting plate
83	9.7565.007 F C	10	1	rondella/washer
84	9.1770.002 FV	10	1	bullone/bolt M 8 X 1,25 X 16
85+	710.2816.023 F C		1	corona/crown 7LD600-665-740
"	904.2816.025 F C		1	" " 7LD600/F-665/F-740/F
"	713.2816.026 D C		1	" " 7LD665/C
86+85=				VOLANO+CORONA/FLYWHEEL+CROWN GEAR
=7100.9888.099 S C			1	x 7LD600-665 std.
=7130.9884.001 D IC			1	x 7LD665/C std.
=740.9885.077 S C			1	x 7LD740 std.
87+	273.3930.019 F C	10	1	fondello/cup
88+	9.1200.032 FV C	10	1	anello OR/rubber oil seal
89+	273.5575.006 FV C	10	1	molla/spring
90	9.3203.047 FV C	10	2	dado/nut
91	710.2640.007 S C		1	coperchio/cover
92+	710.4431.035 D	10	1	guarnizione
93	9.3240.037 F	10	2	dado/nut
94	9.7555.008 FV C	10	2	rondella/washer
95	9.6800.004 F	10	2	prigioniero/stud M 10 X 20 (35)
96	500.2135.072 FV C	10	1	cappello/cap
97	710.3430.067 FV C	10	2	dischetto/spacer
98	260.5755.004 FV C		2	molla/spring
99+87+88+89+100+				FILTRO COMB.COMPLETO
132+133+138+139=				FUEL FILTER ASS.Y
-273.3730.015 FV C			1	
99+	273.2175.009 FV C		1	cartuccia comb./f.filter element
100+	273.4490.017 FV C	10	1	guarnizione/gasket
101	9.6780.012 DV C	10	2	prigioniero/stud M 8 X 25 (37)
103	9.7625.061 D C	10	2	rondella/washer
104	9.7625.061 D C	10	2	rondella/washer
105	273.9375.274 FVAC		1	tubo da serbatoio a pompa iniez. mm 253
106+			pipe from fuel tank to injection pump
107+	710.6141.040 D C	10	1	vedi/see fig.No. 108+... perno/pin
108+106+107+145+146+				COMANDO ACCELERATORE E STOP A DISTANZA
179+180+214+215=				ORIZZONTALE
=710.2691.038 S C			1	HORIZONT.REMOTE THROTTLE AND STOP
109	9.4670.060 FVIC	10	1	guarnizione/copper gasket

FIG. NO.	MATRICOLA PART NO.	Q.ta Q.ty	NOTE REMARKS	Gr. 7 Pag.04
110	9.4670.060 FVIC 10	1	guarnizione/copper gasket	
111	710.1901.012 FVIC 10	1	bullone raccordo/connection bolt	
112	276.1400.027 F C 10	1	asta livello/dipstick	
113+46+47+48+154+181+182+183+514+515+520= =272.3700.140 SV C		1	FILTRD ARIA CON PREFILTRO CYCLONIC TYPE AIR CLEANER	
114+154+181+182+183+515+520= =272.3700.139 FVIC		1	FILTRO ARIA CON CAPPELLOTTO AIR CLEANER WITH AIR INLET COVER	
115+	710.4845.063 E	1	guida v.aspir./inlet v.guide +0,50	
"	710.4845.170 FVICR10	1	" " " std.	
"	710.4845.171 FVICR10	1	" " " +0,50	
116+	710.1160.021 FV C 10	2	anello/circlip	
117+	710.6531.265 FVIC	1	polverizzatore/nozzle	
118	9.4670.005 FV C 10	1	guarnizione/copper gasket 0,50	
"	9.4670.006 FV C 10	1	" " " 1,00	
119+	710.4845.172 FVICR10	1	guida v.scar./exhaust v.guide std.	
"	710.4845.173 FVICR10	1	" " " +0,50	
120	9.6780.076 FV C 10	11	prigioniero/stud M 8 X 18 (34)	
121	9.7626.048 S C 10	11	rondella/washer	
122	9.3240.018 FV 10	11	dado/nut	
123	9.7565.007 F C 10	1	rondella/washer	
124	9.1770.042 D C 10	1	bullone/bolt M 8 X 1,25 X 10	
125	710.9374.044 S C	1	tubo mandata/delivery pipe	
126	9.1770.002 FV 10	1	bullone/bolt M 8 X 1,25 X 16	
127	7100.8546.007 D C	1	staffa/brace	
128	7100.6491.004 S C 10	1	pipetta/pipe elbow	
129	710.5840.032 F	1	mot.avv./st.eng.7D600-665-740 (Bosch 12V)	
"	904.5840.034 F	1	" 7LD600/F-665/F-740/F (Bosch 12V)	
"	7250.5840.074 D C	1	" 7LD665/F (special 24 V)	
130	9.1790.027 D C 10	2	bullone/bolt M 12 X 1,25 X 20	
131	715.3902.024 D C	1	flangia/flange 7LD600/F-665/F-740/F	
132+	260.4430.071 FV C 10	1	guarnizione/gasket	
133+	273.2605.033 F AC	1	coperchio/filter cover	
134	9.1770.006 S 10	5	bullone/bolt M 8 X 1,25 X 25	
135	9.7565.007 F C 10	5	rondella/washer	
136+	710.5680.062 S C 10	1	molla/spring	
137	9.4670.058 FV C 10	1	guarnizione/copper gasket	
138+	9.1760.076 D A	1	bullone/bolt	
139+	9.1202.052 FVAC 10	1	anello OR/rubber oil seal	
140+136+141+143+168+169+170+171+202+203+206= =710.8785.044 D BC		1	SUPPORTO LEVE REGOLATORE CONTROL LEVER SUPPORT valido fino.../up to eng.s.no...	
140+136+143+168+170+171+202+203+206+207= =710.8785.073 D AC		1	SUPPORTO LEVE REGOLATORE CONTROL LEVER SUPPORT valido da.../from eng.s.no... (valido fino... per gruppi elettrogeni/ up to eng.s.no... for gen. sets)	
=7200.8785.096 N A		1	valido da... per gruppi elettrogeni/ from eng.s.no... for gen. sets	
141+	710.5204.003 D BC	1	valido fino.../up to eng.s.no...	
142	710.5655.036 SV C 10	1	valido fino...per mot.std.3000 G/1' e valido da...per gruppi elettrog. up to eng.s.no...- std.eng.3000 R.P.M. and from eng.s.no...for gen.sets	
"	710.5655.054 DVBC 10	1	valido fino...per mot.std.2200 G/1' up to eng.s.no...- std.eng.2200 R.P.M.	
"	710.5655.052 DVBC	1	valido fino...- gr.elettr.3000 G/1' up to eng.s.no...-gen.sets 3000 R.P.M.	
"	713.5655.056 DVBC 10	1	valido fino...- gr.elettr.1500 G/1' up to eng.s.no...-gen.sets 1500 R.P.M.	
"	710.5655.106 N A 10	1	per mot.std. da.../for std.eng.from...	
143+	710.6165.008 D C	1	perno/pin	
144+	710.6141.040 D C 10	1	perno/pin	
145+	710.5660.026 S C 10	1	molla/spring	
146+	9.1760.001 FV 10	1	bullone/bolt M 6 X 1 X 10	
147	2760.9180.042 S C 10	1	terminale/cable-end	
148	9.3240.019 FV C 10	1	dado/nut	
149	2760.9180.042 S C 10	1	terminale/cable-end	
150	9.3240.019 FV C 10	1	dado/nut	

FIG. NO.	MATRICOLA PART NO.	Q.ta Q.ty	NOTE REMARKS	Gr. 7 Pag.05
151+	710.8210.083 FV C 10	1	std. x 7LD600-600/F serie segm./ring set	
"	710.8210.084 F CR10	1	+0,50 " " " "	
"	710.8210.085 F CR10	1	+1,00 " " " "	
"	720.8210.089 FVBC 10	1	std x 7LD665-665/C-665/F	
"	720.8210.090 F BCR10	1	+0,50 " " " "	
"	720.8210.091 F BCR10	1	+1,00 " " " "	
"	625.8211.061 FVAC 10	1	std " " " " " "	
"	625.8211.062 F ACR10	1	+0,50 " " " " " "	
"	625.8211.063 F ACR10	1	+1,00 " " " " " "	
"	740.8211.003 FV C 10	1	std. x 7LD740-740/F	
"	740.8211.004 F CR10	1	+0,50 " " " " " "	
"	740.8211.005 F CR10	1	+1,00 " " " " " "	
152+	710.8480.026 S C	1	spinotto/piston pin	
153+	9.1240.026 FV C 10	2	anello seeger/snap ring	
154+	276.4115.048 F C 10	2	gancio/hook	
155+	710.4501.003 FV C 50	2	guarnizione/gasket	
156+115+116+119+184+			TESTA COMPLETA	
185=			CYLINDER HEAD ASS.Y	
	=710.9201.054 F C	1	std. x 7LD600-665-665/C-740	
	=715.9201.055 F C	1	std. x 7LD600/F-665/F-740/F & optional avviamento elettrico/manovella electric/handle starting	
157	9.4670.058 FV C 10	1	guarnizione/copper gasket	
158	9.3630.037 D C	1	fascetta/clamp	
159	271.7265.008 FV C 10	1	raccordo/connection	
160	9.1200.031 FV C 10	1	anello OR/rubber oil seal	
161	260.7980.020 SV C	1	scodellino/cup	
162	2830.3617.016 S C 10	1	fascetta/strip fixing	
163	260.5390.006 S C 10	1	manicotto/rubber sheating	
164	9.7625.010 FV C 10	2	rondella/washer	
165	9.3203.047 FV C 10	1	dado/nut	
166	9.1770.006 S 10	1	bullone/bolt M 8 X 1,25 X 25	
167				
168+	9.1240.004 FV C 10	1	anello seeger/snap ring	
169+	9.2280.061 D B 10	1	valido fino.../up to eng.s.no...	
170+	9.7625.012 SVBC 10	1	valido fino.../up to eng.s.no...	
"	560.6330.069 D A	1	valido da.../from eng.s.no...	
171+	9.3240.018 FV 10	1	dado/nut	
172+			vedi/see fig.No. 174+...	
173+	710.5660.026 S C 10	1	molla/spring	
174+144+172+173+175+			COMANDO ACCELERATORE E STOP A MANO	
209+244+245+246+247+			HAND THROTTLE AND STOP	
248+249+250=				
	=710.2691.037 S C	1		
175+	710.2501.021 N A 10	1	colonna/hollowstud	
176	9.3240.008 FV 10	1	dado/nut	
177	9.1760.027 N 10	1	bullone/bolt M 6 X 1 X 40	
178	9.1760.083 D C 10	1	bullone/bolt M 6 X 1 X 55 std.	
"	9.1760.108 N	1	x gr.el./generating sets - M 6X1X60	
179+	9.8430.023 S C 10	1	spina/locating pin	
180+			vedi/see fig.No. 108+...	
181+	291.4776.032 FV C 10	1	guarnizione/gasket	
182+	270.3525.080 F BC 10	1	distanziale/spacer diam.= 61	
"	292.1261.073 DVAC 10	1	anello tenuta/seal ring diam.= 62,5	
183+	292.5496.111 FVIC	1	massa filtrante/filtering element	
184+	276.8000.031 FV CR10	1	sede v.aspirazione/inlet v.seat	
185+	710.8000.057 FV CR10	1	sede v.scarico/exhaust v.seat	
186	710.9485.042 S C	1	tubo lub./lub.oil pipe	
187	9.1901.048 FVIC 10	1	bullone raccordo/connection bolt	
188	271.7470.003 FV C 10	1	riempitore/filler	
189	271.4760.015 FV C 10	1	guarnizione/gasket	
190	271.5755.034 SV C 10	1	molla/spring	
191	740.6590.048 F C	1	pompa iniez./inject.pump 7LD740-740/F	
"	710.6590.032 F C	1	" 7LD600-600/F-665-665/C-665/F std.	
"	710.6590.045 F	1	" " " " " " Bosch	
192+	500.4580.023 N 50	1	guarnizione/gasket 0,30	
"	500.4580.024 N 50	1	" " " 0,50	
"	500.4580.029 N 50	1	" " " 0,10	
"	500.4580.057 N 10	1	" " " 0,05	
193	9.9730.100 F 10	2	vite/screw M 8 X 1,25 X 25	
194	530.4570.010 FV C	1	guarnizione/gasket 7LD600-665-665/C	
"	710.4570.018 DV C 10	1	" " 7LD740	
195	9.7565.007 F C 10	1	rondella/washer	
196	9.1770.002 FV 10	1	bullone/bolt M 8 X 1,25 X 16	
197	9.3240.033 FV 10	2	dado/nut	
198	9.6800.056 SV C 10	2	prigioniero/stud M 10 X 28 (43)	
199	9.7565.004 F C 10	3	rondella/washer	
200	9.1760.005 FV 10	3	bullone/bolt M 6 X 1 X 16	

FIG. NO.	MATRICOLA PART NO.	Q.ta Q.ty	NOTE REMARKS	Gr. 7 Pag.06
201	710.6961.021 S C	1	puleggia avv./st.pulley 7LD600-665-740	
"	713.6961.022 D C	1	" " " 7LD665/C	
202+	710.6141.055 D BC	1	valido fino.../up to eng.s.no...	
"	710.6140.157 D AC	1	valido da.../from eng.s.no...	
203+	9.1200.082 DV C 10	1	anello OR/rubber oil seal	
204	9.1760.005 FV 10	2	bullone/bolt M 6 X 1 X 16	
205			
206+	9.1240.004 FV C 10	1	anello seeger/snap ring	
207+	725.5200.142 D	1	leva valida da./lever for eng.from s.no.. (valido fino... per gruppi elettrogeni/ up to eng.s.no... for gen. sets)	
"	725.5200.522 N A	1	valido da... per gruppi elettrogeni/ from eng.s.no... for gen. sets	
208	9.3240.008 FV 10	1	dado/nut	
209+	9.8430.023 S C 10	1	spina/locating pin	
210+	9.3240.058 DV C 10	1	dado/nut	
211+210=			SUPPLEMENTO DI COPPIA	
	=500.8576.025 DV C	1	EXTRA FUEL DEVICE	
212	90.6000.031 FV C 10	1	pastiglia/nut	
213	9.9790.023 F C 10	1	vite/screa M 5 X 0,8 X 7	
214+		vedi/see fig.No 108+...	
215+	9.8430.023 S C 10	1	spina/locating pin	
216+151+152+153=			PISTONE COMPLETO/PISTON SET	
	=710.6502.048 FV C	1	std. x 7LD600-600/F	
	=710.6502.049 F CR	1	+0,50 " "	
	=710.6502.050 F CR	1	+1,00 " "	
	=720.6502.066 FV C	1	std. x 7LD665-665/C-665/F	
	=720.6502.067 F CR	1	+0,50 " "	
	=720.6502.068 F CR	1	+1,00 " "	
	=740.6500.100 FV C	1	std. x 7LD740-740/F	
	=740.6500.101 F CR	1	+0,50 " "	
	=740.6500.102 F CR	1	+1,00 " "	
217+218+270=			BIELLA COMPLETA	
	=710.1526.020 F C	1	CONNECTING ROD	
218+	710.1630.012 FV CR	1	br.piede biella/small end bearing	
219	710.9520.030 S C	1	tubo protezione/guard tube	
220	9.1901.048 FVIC 10	1	bullone raccordo/connection bolt	
221	9.4670.058 FV C 10	1	guarnizione/copper gasket	
222	9.1901.048 FVIC 10	1	bullone raccordo/connection bolt	
223	9.4670.058 FV C 10	1	guarnizione/copper gasket	
224	9.4670.058 FV C 10	1	guarnizione/copper gasket	
225	9.4670.058 FV C 10	1	guarnizione/copper gasket	
226	500.6400.045 SV C 10	1	piattello/retainer	
227	9.4670.058 FV C 10	1	guarnizione/copper gasket	
228	740.6578.024 FV C	1	pompante/plunger 7LD740-740/F	
"	710.6578.018 FV C	1	" 7LD600-600/F-665-665/C-665/F std.	
"	710.6578.022 FV C	1	" " " " " " Bosch	
229	500.9672.012 F C	1	valvolina mandata/delivery valve	
230	500.7215.035 FV C	1	punteria/tappet	
231	500.6000.036 FV C 10	1	pastiglia/spacer	
232	7100.3617.015 N	1	fascetta/strip fixing	
233	710.2569.034 S AC	1	convogliatore/shroud 7LD600-665	
"	710.2569.032 D AC	1	" " 7LD665/C	
"	740.2569.039 D C	1	" " 7LD740	
234	7100.9882.059 D C	1	volano/flywheel 7LD600-665	
"	713.9882.060 N	1	con-senza imp.luce/with-without ligh.s.	
235	9.7625.022 S 10	2	volano/flywheel 7LD665/C std.	
236	9.1790.030 N	2	rondella/washer	
237	9.7565.013 S C 10	2	bullone/bolt M 12 X 1,25 X 25	
238	9.9730.015 F C 10	5	rondella/washer	
239	710.5096.026 S IC	1	vite/screw M 6 X 1 X 30	
240	9.1770.007 D B 10	4	lamiera/panel	
"	9.9730.024 DVAC 10	4	bullone/bolt M 8 X 1,25 X 30	
241	9.7565.007 FVBC 10	4	vite/screw M 8 X 1,25 X 16	
242	9.7565.007 F C 10	4	rondella/washer	
243	9.1770.056 S C 10	2	rondella/washer	
244+		bullone/bolt M 8 X 1,25 X 18	
245+	710.6550.021 N 10	1	vedi/see fig.No. 174+...	
246+	9.7625.007 S C 10	1	pomello/knob	
247+	9.1165.003 D B 10	1	rondella/washer	
"	9.1165.001 D A 10	1	anello/circlip	
248+	9.3200.002 D B 10	1	" "	
"	9.3200.015 FVAC 10	1	dado/nut	
249+		" "	
250+	9.8430.023 S C 10	1	vedi/see fig.No. 174+...	
251	9.1585.043 S C 10	1	spina/locating pin	
			boccola/bushing	

FIG. NO.	MATRICOLA PART NO.	Q.ta Q.ty	NOTE REMARKS	Gr. 7 Pag.07
252	9.7565.011 F C 10	1	rondella/washer	
253	710.9652.030 FV CR10	1	valvola aspirazione/inlet valve	
254	710.9685.040 FV CR10	1	valvola scarico/exhaust valve	
255	9.4670.058 FV C 10	1	guarnizione/copper gasket	
256	7100.3617.018 N 10	1	fascetta/strip fixing	
257	710.5401.011 D C 10	2	manicotto/rubber sheathing	
258	715.5455.014 S C	1	manov./handle (std. 7LD600/F-665/F-740/F)	
259	715.6927.003 D BC	1	protezz./guard (std.7LD600/F-665/F-740/F)	
"	715.6927.078 N A	1	" " " " " "	
260	710.1055.024 S C	1	albero contrapp./counterweight shaft	
261	9.3030.028 FV C 10	1	cuscinetto/ball bearing	
262+263= =710.4990.051 S C		1	INGRANAGGIO INTERMEDIO INTERMEDIATE GEARWHEEL	
263+	710.1610.073 DV C	2	bronzina/bearing	
264	710.6141.008 S C	1	perno/lever shaft	
265	710.2537.023 S	1	contrappeso/couterweight	
266	9.1780.008 D 10	1	bullone/bolt M 10 X 1,5 X 40	
267	710.7550.007 D C 10	1	rondella/washer	
268	710.7701.022 S C 10	2	rondella/washer	
269	9.1240.007 FV C 10	1	anello seeger/snap ring	
270+	9.1780.048 F C 10	2	bullone/bolt M 10 X 1,5 X 50	
271	710.6330.058 F C 10	1	piastrina/safety plate	
272	710.1640.040 FV C	1	bronz.biella/large end bushing	std.
"	710.1640.052 F CR	1	" " " "	-0,25
"	710.1640.053 F CR	1	" " " "	-0,50
273	710.1410.027 SV C	2	asta punteria/push rod	
274+	710.4730.059 DVAC 10	1	0,6 x 7LD600-600/F guarn.testa/head gask.	
"	710.4730.072 DVAC 10	1	0,7 " " " "	
"	710.4730.022 FV C 10	1	0,8 " " " "	
"	710.4730.073 DVAC 10	1	0,9 " " " "	
"	710.4730.058 DVAC 10	1	1,0 " " " "	
"	720.4730.065 FVAC 10	1	0,6 x 7LD665-665/C-665/F	
"	720.4730.074 SVAC 10	1	0,7 " " " "	
"	720.4730.018 FV C 10	1	0,8 " " " "	
"	720.4730.075 SVAC 10	1	0,9 " " " "	
"	720.4730.064 SVAC 10	1	1,0 " " " "	
"	740.4730.062 DVAC 10	1	0,6 x 7LD740-740/F	
"	740.4730.076 SVAC 10	1	0,7 " " " "	
"	740.4730.043 SV C 10	1	0,8 " " " "	
"	740.4730.077 DVAC 10	1	0,9 " " " "	
"	740.4730.061 DVAC 10	1	1,0 " " " "	
275	710.2381.071 FVAC	1	cilindro/cylinder 7LD600-600/F	
"	720.2381.070 FVAC	1	" " 7LD665-665/C-665/F	
"	740.2381.011 FVAC	1	" " 7LD740-740/F	
276	9.3240.125 N 10	4	dado/nut	
277	9.7625.197 N 10	4	rondella/washer	
278	710.9485.041 D C	1	tubo lubr./lubr.oil pipe	
279	9.4670.058 FV C 10	1	guarnizione/copper gasket	
280	710.8676.027 F C	1	supporto/support 7LD600-665-665/C	
"	740.8676.047 S C	1	" " 7LD740	
281	710.6370.101 D AC	1	piastra/plate	
282	9.7565.011 F C 10	4	rondella/washer	
283	9.9790.037 FV C 10	2	vite/screw M 6 X 1 X 8	
284	9.1780.010 F 10	4	bullone/bolt M 10 X 1,5 X 45	
285	9.7625.037 D C 10	1	rondella/washer	
286	9.3260.056 FV C 10	1	dado/nut 7LD600-665-740	
"	9.3260.027 FV C 10	1	" " 7LD600/F-665/C-665/F-740/F	
287	9.7625.054 N	1	rondella/washer	
288	9.3260.044 DV C 10	1	dado/nut 7LD600/F-665/F-740/F	
290	9.2280.050 S 10	1	chiavetta/key 7LD600/F-665/C-665/F-740/F	
291	713.1011.027 D C	1	alb./camshaft 7LD600/F-665/C-665/F-740/F	
292	9.8430.036 D C 10	1	spina/locating pin	
293	710.6275.070 D C 10	1	piastra/plate	
294	9.2280.054 D C 10	1	chiavetta/key	
295	9.2280.054 D C 10	1	chiavetta/key	
296	713.1010.088 D C	1	alb./camshaft 7LD600/F-665/C-665/F-740/F	
"	7150.1011.059 N AC	1	alb.camme per avv.manov.valido da... handle st.camshaft for eng.from s.no...	
297	9.3240.021 SV C 10	4	dado/nut	
298	9.7565.007 F C 10	4	rondella/washer	
299+	9.6780.076 FV C 10	4	prigioniero/stud M 8 X 18 (34)	
300	710.5271.065 F C	1	leva/lever	
301	710.1010.071 D C	1	alb.camme/camshaft std. 7LD600-665-740	
302	710.5270.086 F C	1	leva/lever	
303	9.1585.053 S 10	1	boccola/bushing	
304+305+309+341= =710.1052.019 F C =740.1050.139 F C		1 1	ALBERO A GOMITO/CRANKSHAFT x 7LD600-600/I-665-665/I x 7LD740-740/I	

FIG. NO.	MATRICOLA PART NO.	Q.ta Q.ty	NOTE REMARKS	Gr. 7 Pag. 08
305+	500.9000.038	F C 10	2	tappo/expansion plug
306	292.4740.017	FV C 10	2	guarnizione/gasket
307	710.1257.013	FV C	2	anello reggispinta/thrust washer
309+	9.2280.056	FV C 10	1	chiavetta/key
311+	740.4410.053	S	50	1 guarnizione/gasket
312+	710.6850.080	S C	4	1 prigioniero/cylinder stud
313	9.1901.048	FVIC 10	1	1 bullone raccordo/connection bolt
314	9.4670.058	FV C 10	1	1 guarnizione/copper gasket
315	9.1212.006	FV C 10	1	1 anello tenuta/seal ring 7LD600-665-740
"	9.1213.030	S C 10	1	1 " " 7LD665/C
316	710.5066.034	S AC	1	1 lamiera/airtight plate
317	710.5066.033	S AC	1	1 lamiera/airtight plate
318	283.4055.003	F C	1	1 fune avviamento/rope starting
319	2830.5855.002	S	1	1 mozzo/hub
320	9.1213.056	FVIC 10	1	1 anello/ring 7LD600/F-665/C-665/F-740/F
321	715.3781.010	N	1	1 flangia/flange (std.7LD600/F-665/F-740/F) & optional avviam.manov./handle starting port./gear cov.7LD600/F-665/C-665/F-740/F
322	713.6646.062	D C	1	1 dado/nut
323	9.3240.018	FV 10	2	2 rondella/washer
324	9.7565.007	F C 10	2	2 piastra/plate 7LD600/F-665/C-665/F-740/F
325	713.6275.083	D C	1	1 spina/taper pin
326	904.8460.090	D BC 10	1	1 vedi Circ.Tecn./see Service Letter 1125
327
328	9.3030.028	SVC 10	1	1 cusc./ball b. 7LD600/F-665/C-665/F-740/F
329	710.2710.045	D C	1	1 coperchio/cover
330	9.3260.044	DV C 10	1	1 dado/nut 7LD600/F-665/C-665/F-740/F
331	9.9730.032	S 10	2	2 vite/screw M 8 X 1,25 X 45
332+	710.4431.037	DV C 50	1	1 guarnizione/gasket
333+	710.4560.016	N 50	1	1 guarnizione/gasket
334	9.1585.053	S 10	1	1 boccola/bushing
335	9.7625.055	SV C 10	1	1 rondella/washer
336	9.3203.015	FV C 10	1	1 dado/nut
337	710.5265.012	F BC	1	1 valido fino... per mot.std. up to eng.s.no... for std.eng.
"	710.5265.014	S A	1	1 valido da... per mot.std. from eng.s.no... for std.eng.
"	710.5265.016	D BC	1	1 valido fino... per gruppi elettrogeni up to eng.s.no... for gen.sets
"	710.5265.015	D AC	1	1 valido da... per gruppi elettrogeni from eng.s.no... for gen.sets
338+305+309=				ALBERO A GOMITO/CRANKSHAFT
=713.1052.022	S C	1	1	x 7LD600/F-665/C-665/F
=745.1050.176	N	1	1	x 7LD740/F
339	291.1862.012	S C	1	1 bullone/bolt
340	9.2280.050	S 10	1	1 chiavetta/key
341+	9.2280.049	FV 10	1	1 chiavetta/key
342+305+309+341=				ALBERO A GOMITO/CRANKSHAFT
=710.1052.021	S C	1	1	x 7LD600-600/I-665-665/I
=740.1050.140	S C	1	1	x 7LD740-740/I
343	70.1970.039	N 10	3	3 bussola/sleeve
344+38+39+40+41+63+ 64+65+299+312+368+ 371+441+442=				BASAMENTO COMPLETO CRANKCASE
=740.1510.131	F AC	1	1	
345+	710.1611.029	FVIC	1	1 bronz.l.volano/flywheel side bear. std.
"	710.1611.027	F ICR	1	1 " " -0,50
"	710.1611.028	F ICR	1	1 " " -1,00
346	9.7626.048	S C 10	7	7 rondella/washer
347	9.3203.040	DV C 10	7	7 dado/nut
348	9.9790.037	FV C 10	8	8 vite/screw M 6 X 1 X 8
349	9.1760.058	D C 10	2	2 bullone/bolt M 6 X 1 X 55
350	2830.7362.238	FVIC	1	1 reg.tensione/voltage regulator 12V 12A
351	9.9731.092	S 10	2	2 vite/screw M 8 X 1,25 X 14
352	710.9245.082	S AC 10	1	1 tirante/tie rod
353	9.3240.018	FV 10	6	6 dado/nut
354	9.7565.007	F C 10	6	6 rondella/washer
355	9.6780.005	S 10	6	6 prigioniero/stud M 8 X 18 (30)
356	9.1200.001	FV C 10	2	2 anello OR/rubber oil seal
357	9.3001.026	S	1	1 cuscin./ball b.7LD600/F-665/C-665/F-740/F
358	710.6075.006	D C	1	1 perno/pin
359	9.8430.036	D C 10	1	1 spina/locating pin
360+	710.5550.010	SV C 10	1	1 molla/spring
361+	710.6371.082	D C 10	1	1 piastra/plate
362	9.2280.061	D C 10	1	1 chiavetta/key
363	1	1
364	9.2200.013	S C 10	1	1 chiavetta/key

FIG. NO.	MATRICOLA PART NO.	Q.ta Q.ty	NOTE REMARKS	Gr. 7 Pag. 09
365+383=			POMPA OLIO/LUB.OIL PUMP	
	=710.4336.030 F IC	1	std. per/for 7LD600-665-740	
	=710.4336.031 S IC	1	std. per/for 7LD600/F-665/C-665/F-740/F	
	=710.4336.032 S IC	1	per gruppi elettrogeni/for generating set	
	=713.4336.033 S IC	1	su/on 7LD600-665-740	
			su/on 7LD600/F-665/C-665/F-740/F	
366+	710.6231.032 D C 10	1	perno/lever pin	
367+	710.2800.049 N 10	1	copiglia/cotter pin	
368+	9.6780.076 FV C 10	7	prigioniero/stud M 8 X 18 (34)	
369	500.9680.007 SV C	1	valvola pressione olio/oil pressure valve	
370	500.5755.049 FV C 10	1	molla/spring	
371+	9.6780.045 S 10	6	prigioniero/stud M 8 X 12 (24)	
372	9.4670.021 FV C 10	1	guarnizione/copper gasket	
373	500.9070.012 S C	1	tappo/cap	
374	9.7565.007 F C 10	6	rondella/washer	
375	9.3240.018 FV 10	6	dado/nut	
376	9.9732.092 F C 10	1	vite/screw M 8 X 1,25 X 18	
377	710.1611.029 FVIC	1	bronz. l. distrib./gear side bearing std.	
"	710.1611.027 F ICR	1	" " "	-0,50
"	710.1611.028 F ICR	1	" " "	-1,00
378+	9.9730.008 D C 10	1	vite/screw M 6 X 1 X 10	
379+	9.7565.004 F C 10	1	rondella/washer	
380+	9.8245.010 F 10	3	sfera/ball	
381+		vedi/see fig.No. 417	
382+	500.1160.011 DV C 10	1	anello/circlip	
383+		x 7LD600-665-740 vedi/see fig.No 365+...	
"	723.3855.029 D AC	1	flangia/flange 7LD600/F-665/C-665/F-740/F	
384	9.1760.007 S 10	1	bullone/bolt M 6 X 1 X 25	
385	710.6428.027 D C	1	piede/engine mount	
386+	710.4700.098 SV C 50	1	guarnizione/gasket 0,30	
"	710.4701.018 S C 50	1	" " 0,40	
387+	710.4601.011 SV C 10	1	guarnizione/gasket	
388	9.6800.053 S C 10	8	prigioniero/stud M 10 X 18 (33)	
389	710.2175.025 FV C	1	cartuccia olio/oil filter element	
390	710.2751.038 S C	1	coperchio/cover	
393	9.7625.092 D C 10	2	rondella/washer	
394	7100.8505.085 D C	1	squadretta/angle bracket	
395	276.6740.088 FVBC 10	1	presa/inlet reg.Saprisa	
"	2830.6740.153 FVAC 10	1	" " " " "	
"	276.6740.089 SVBC 10	1	" " " " "Ducati	
"	276.6740.090 SVBC 10	1	" " " " "con spia c.batt.	
"	2830.6740.154 FVAC 10	1	" " " " "with ch.batt.light	
396	276.2145.014 FVAC	1	cappuccio/rubber cap	
397	9.7625.007 S C 10	2	rondella/washer	
398	9.3240.003 FV C 10	6	dado/nut	
399	9.6800.056 SV C 10	1	prigioniero/stud M 10 X 28 (43)	
400+	710.4500.097 FV C 10	2	guarnizione/gasket	
401	9.9790.037 FV C 10	2	vite/screw M 6 X 1 X 8	
402	710.5462.013 FV C	1	marmitta/muffler	
403	9.7565.004 F C 10	4	rondella/washer	
404	710.8300.042 N	1	sostegno/bracket	
405+	9.3030.051 D B	1	cuscin. valido fino... per gruppi elettr.	
"	725.1580.091 S AC 10	1	ball bear.for gen.sets up to eng.s.no...	
"			boccola valida da... per gruppi elettr.	
"			bushing for gen.sets from eng.s.no...	
406	9.7565.004 F C 10	1	rondella/washer	
407+366+367=			LEVA COMANDO POMPA INIEZIONE	
	=710.5204.004 S C	1	INJECTION PUMP CONTROL LEVER	
408+	9.3030.051 D B	1	valido fino... per gruppi elettrogeni	
"	725.1580.092 S AC 10	1	up to eng.s.no... for generating sets	
"			valido da... per gruppi elettrogeni	
"			from eng.s.no... for generating sets	
409	500.5725.032 FV C 10	1	molla/spring	
410	9.1202.007 FV C 10	1	anello OR/rubber oil seal	
411+	5000.9180.056 FVAC 10	4	terminale/faston	
412	5000.2118.047 N 10	4	capocorda/cable-end	
414	9.3022.037 FV C	1	cuscinetto/ball bearing (vers.Industr.)	
415	9.3240.066 FV C 10	1	dado/nut	
416	9.7565.011 F C 10	1	rondella/washer	
417+380+381+382=			GRUPPO INGRANAGGIO REGOLATORE	
	=710.4884.008 S IC	1	GOVERNOR GEAR ASS.Y	
418	9.9730.016 SVBC 10	4	vite/screw M 6 X 1 X 35	
"	9.9732.016 S A 10	4	" " M 6 X 1 X 40	
421	9.8965.003 FV C 10	1	tappo/plug	
422	9.4670.060 FVIC 10	1	guarnizione/copper gasket	
423	9.7565.029 S C 10	8	rondella/washer	

FIG. NO.	MATRICOLA PART NO.	Q.ta Q.ty	NOTE REMARKS	Gr. 7 Pag. 10
424	9.3240.033 FV	10	dado/nut	
425	9.7565.007 F C	10	rondella/washer	
426	9.1770.006 S	10	bullone/bolt M 8 X 1,25 X 25	
427	9.1760.001 FV	10	bullone/bolt M 6 X 1 X 10	
428	9.7565.004 F C	10	rondella/washer	
429	7100.8505.086 D C		squadretta/angle bracket	
430	9.6800.050 S I	10	prigioniero/stud M 10 X 23 (38)	
431	9.7625.019 S	10	rondella/washer	
432	9.7565.011 F C	10	rondella/washer	
433	9.3240.053 FV C	10	dado/nut	
434	2910.1862.013 S IC		bullone/bolt	
435	9.8430.054 D	10	spina/locating pin	
436	270.2050.060 S		campana frizione/clutch bell	
437	2790.2031.009 S		campana lato motore/engine side bell	
438	9.1210.031 FV C	10	anello tenuta/seal ring 7LD600-665-740	
439	9.3203.047 FV C	10	dado/nut	
440				
441+	9.6780.011 DV C	10	prigioniero/stud M 8 X 23 (38)	
442+	9.6780.064 D C	10	prigioniero/stud M 8 X 30 (40)	
443	710.6646.016 D C		portina/gear cover 7LD600-665-740	
444+	710.4601.012 DV C	10	guarnizione/gasket 0,30	
445	7100.4936.075 D I		ingranaggio regolat./governor gearwheel	
447				
448	500.4896.002 S		gruppo regolatore/governor ass.y	
452+	9.7625.079 N		rondella/washer gr.elettrog./gen.sets	
453+	9.1240.002 SV	10	anello seeger/snap ring	
454+411+485=			PRESSOSTATO COMPLETO	
=9040.6745.031 FVAC			PRESSURE OIL SWITCH	
455	9.7625.010 FV C	10	rondella/washer	
456	9.1770.056 S C	10	bullone/bolt M 8 X 1,25 X 18	
457	9.1760.005 FV	10	bullone/bolt M 6 X 1 X 16	
458	9.7565.004 F C	10	rondella/washer	
459	710.9320.060 S C		tubo aspirazione olio/oil pipe	
460+	710.4740.026 N	10	guarnizione/gasket	
461+462+463=			PORTINA DI FONDO/OIL PAN	
710.6647.087 D C			std.	
462+	9.4670.016 FV C	10	guarnizione/copper gasket	
463+	9.8965.005 FV C	10	tappo/oil drain plug	
464	710.6428.026 D C		piede/engine mount	
465	9040.5175.119 F AC	10	lampadina/lamp	
466	9040.6612.063 S AC		spia olio/oil warning	
467	9040.6612.064 S AC		spia batteria/battery warning	
468	2830.5040.004 SV C		interuttore/key switch	
469	9040.2615.021 F C		coperchio/cover	
471	9.7770.072 N	10	rullo/roller	
472+476=			FILTRO COMBUSTIBILE ESTERNO	
=2830.3730.036 FV C			EXTERNAL FUEL FILTER	
473	9.4670.016 FV C	10	guarnizione/copper gasket	
474	9.4670.016 FV C	10	guarnizione/copper gasket	
475	9.1901.032 FVIC	10	bullone raccordo/connection bolt	
476+	2830.2175.045 FVAC		cartuccia comb./f.filter element	
477	9.9790.037 FV C	10	vite/screw M 6 X 1 X 8	
479	9.9790.037 FV C	10	vite/screw M 6 X 1 X 8	
480	9.7565.004 F C	10	rondella/washer	
481	715.5900.086 N A		mozzo/hub std.x 7LD600/F-665/F-740/F & optional avviam.manov./handle starting	
482	9.9732.092 F C	10	vite/screw M 8 X 1,25 X 18	
483	9.7565.007 F C	10	rondella/washer	
484	9.8430.059 N A	10	spina/locating pin	
485+	3600.6491.013 FVAC		pipetta/pipe elbow	
500	9040.2900.069 F C		cruscotto/dashboard	
501	9040.2900.070 F C		cruscotto/dashboard	
502	2760.2750.111 F C		coperchio/switch cover	
503	7150.8506.036 N		squadretta/angle bracket	
505	9.9765.001 S C	10	vite/screw M 6 X 1 X 8	
506	9.1901.030 FVIC	10	bullone raccordo/connection bolt	
507	9.4670.059 FVIC	10	guarnizione/copper gasket	
508	9.4670.059 FVIC	10	guarnizione/copper gasket	
509	276.6585.030 FV C		pompa alimentazione/feed pump	
510	710.6495.024 S C	10	puntalino/drive rod	
511	5000.9374.036 S C		tubo da pompa al.a filtro comb -mm 360	
			pipe from feed pump to fuel filter	
512	2760.9372.060 D C		tubo da filtro nafta a pompa in.-mm 550	
			pipe from fuel filter to inject.pump	
513	710.1970.101 D AC	10	bussola/sleeve	
514+	2910.1301.069 FV C	10	prefiltro/plastic prefilter	

MATERIALE DI RETTIFICA
GRINDING WORKSHOP PARTS LIST
MATERIEL POUR RECTIFIEUR

Gr. 7
Pag. 12

MOTORI-ENGINES-MOTEURS GR. 7

FIG. NO.	MATRICOLA PART NO.	Q.ta Q.ty	NOTE REMARKS
115+	710.4845.170 FVICR10	1	guida v.aspir./inlet v.guide std.
"	710.4845.171 FVICR10	1	" " " +0,50
119+	710.4845.172 FVICR10	1	guida v.scar./exhaust v.guide std.
"	710.4845.173 FVICR10	1	" " " +0,50
151+	710.8210.084 F CR10	1	+0,50 x 7LD600-600/F serie segm./ring set
"	710.8210.085 F CR10	1	+1,00 " " " "
"	720.8210.090 F CR10	1	+0,50 x 7LD665-665/C-665/F
"	720.8210.091 F CR10	1	+1,00 " " " "
"	740.8211.004 F CR10	1	+0,50 x 7LD740-740/F
"	740.8211.005 F CR10	1	+1,00 " " " "
184+	276.8000.031 FV CR10	1	sede v.aspirazione/inlet v.seat
185+	710.8000.057 FV CR10	1	sede v.scarico/exhaust v.seat
216+151+152+153=			PISTONE COMPLETO/PISTON SET
=710.6502.049 F CR		1	+0,50 x 7LD600-600/F
=710.6502.050 F CR		1	+1,00 " " " "
=720.6502.067 F CR		1	+0,50 x 7LD665-665/C-665/F
=720.6502.068 F CR		1	+1,00 " " " "
=740.6500.101 F CR		1	+0,50 x 7LD740-740/F
=740.6500.102 F CR		1	+1,00 " " " "
218+	710.1630.012 FV CR	1	br.piede biella/small end bearing
253	710.9652.030 FV CR10	1	valvola aspirazione/inlet valve
254	710.9685.040 FV CR10	1	valvola scarico/exhaust valve
272	710.1640.052 F CR	1	bronz.biella/large end bushing -0,25
"	710.1640.053 F CR	1	" " " -0,50
345	710.1611.027 F ICR	1	bronz.l.volano/flywheel side bear.-0,50
"	710.1611.028 F ICR	1	" " " -1,00
54+64+65+92+155+192+ 274+311+332+333+386 387+400+444+460= =710.8180.056 FV CR		1	SERIE GUARNIZIONI GASKET SET