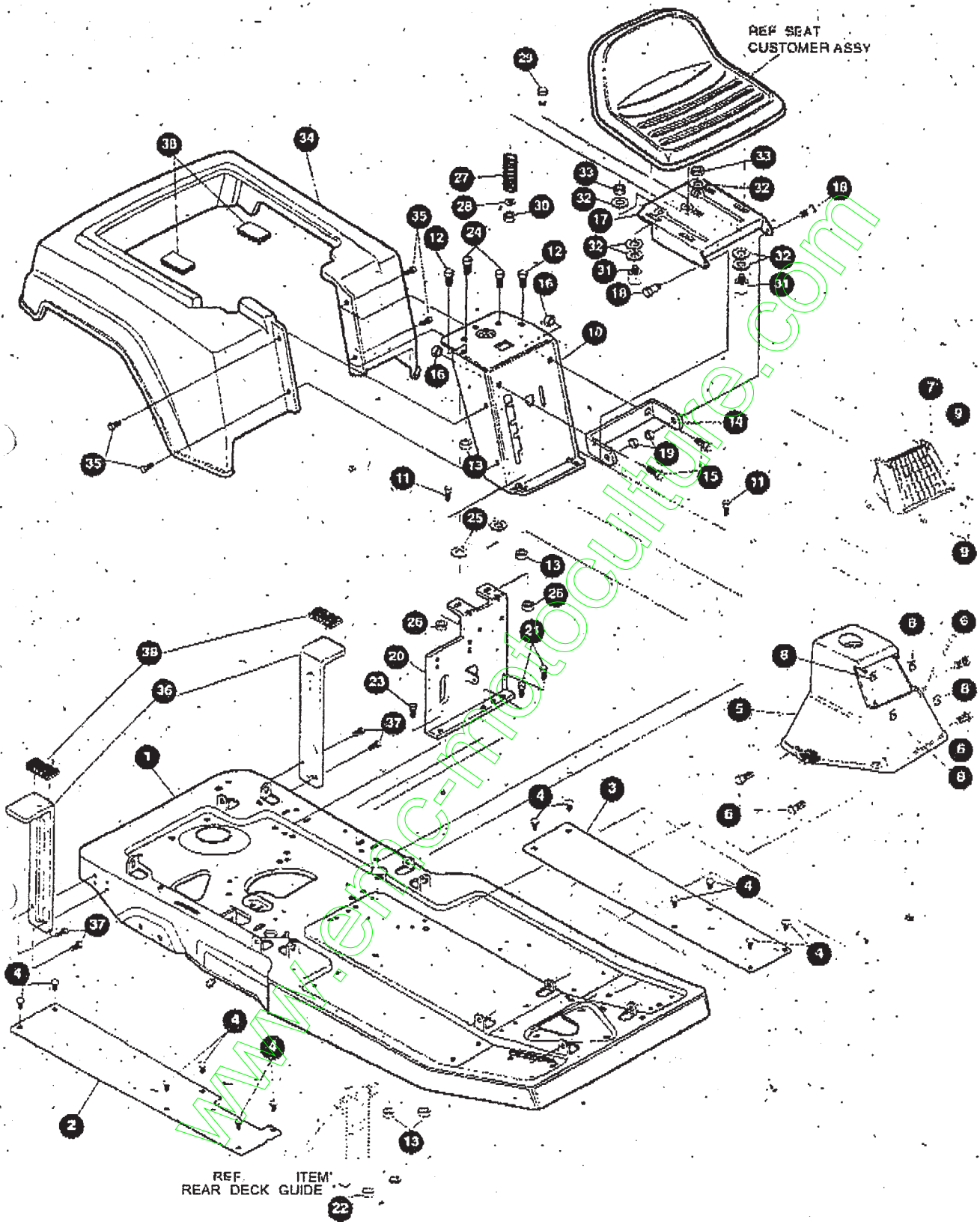


F3595-030 ENSEMBLE CHASSIS



UTILISEZ DES PIÈCES D'ORIGINE POUR
CONSERVER L'APPLICATION DE LA GARANTIE

TOUTES LES PIÈCES NON
REFEREES SONT
INTERCHANGEABLES AVEC
LEURS OPPOSEES.

332184 A

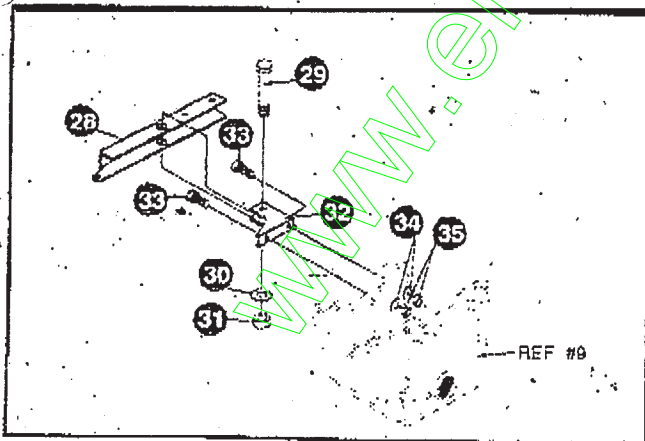
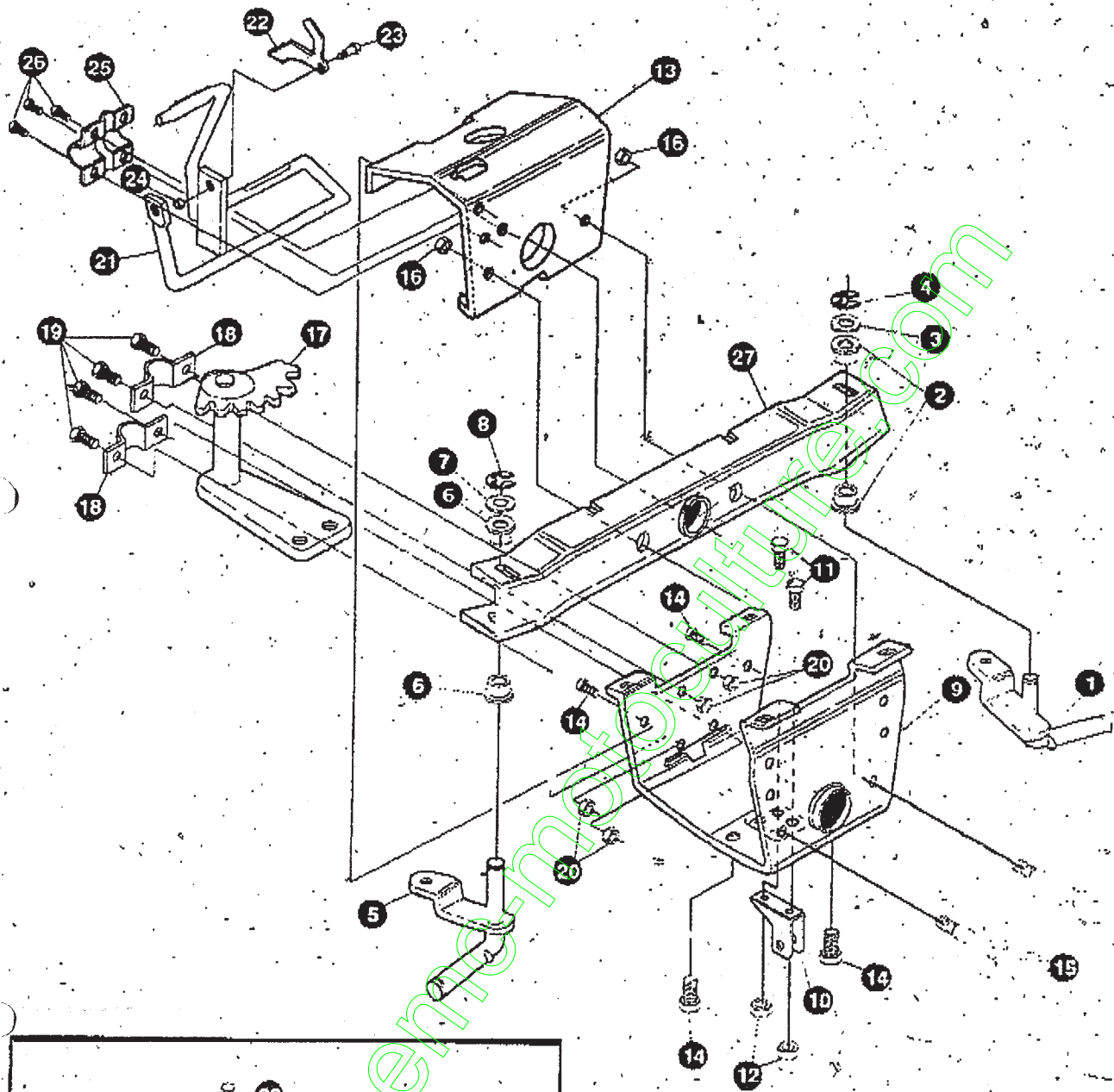
TRACTEUR TONDEUSE 30" MODÈLE F3595-030

KEY#	PART#	DESCRIPTION	QTY
1	314227-881	FRAME, RER	1
2	389612	FOOT PAD, RH, NOMA, 8/32, RER, BLACK	1
3	3 0 9 6 1 3	FOOT PAD, LH, NOMA, 8/32, RER, BLACK	1
4	309235	FASTENER, RATCHET, BLACK	12
5	3 3 2 1 9 8	CONSOLE, C-2 NOMA, RER, BLACK	1
6	995346	SCREW, 1/4-20 X .50 WAHTAP	4
	303130	HEADLIGHT ASSEMBLY, NOMA, RER	1
3	- 3 0 3 2 6 0	CLIP, TINNERMAN	4
9	308347	SCREW, #6-32 X .50 PHPNHMA	4
10	330969-88 1	SUPPORT, SEAT WLIFT SLOT	1
11	48901	SCREW, 5/16-18 X .63 WAHHC	2
12	1 8 0 0 7 7	SCREW, 5/16-18 X .75 HHC	2
13	1498	NUT, 5/16-18 REGHEXCTRLK	4
14	301330-853	SEAT BRACKET	1
15	180120	SCREW, 3/8-16 X .75 HHC	2
16	1499	NUT, 3/8-16 REGHXCTRLK	2
17	313476-853	SEATPLATE	1
18	2 0 5 0 7	BOLT, .437 X .156 HSSH, 5/16-18	2
19	1498	NUT, 5/16-18 REGHEXCTRLK	2
20	331106-853	SEAT/SHIFT SUPPORT FOR-M#28	1
21	180079	SCREW, 5/16-18 X 1.00 HHC	2
22	1498	NUT, 5/16-18 REGHEXGTRLK	2
23	35408	SCREW, 5/16-18 X .75 WAHTAP	1
2	4	SCREW, 5/16-18 X .75 HHC	2
25	4 5 6 0 2	WASHER, FLAT, 333 X .87X .119	2
26	1498	NUT, 5/16-18 REGHEXCTRLK	2
27	319136	SPRING, COMP, .97 X 2.00 X .095	1
28	120392	WASHER, FIAT, .281 X .63X .065	1
29	180016	SCREW, 1/4-20 X .50 HHC	1
30	1502	NUT, 1/4-20 REGHEXCTRLK	1
31	53446	PIN, 5/16-18, HOOD LATCH	2
32	120386	WASHER, FLAT, .312X .73X .065	6
33	124824	NUT, 5/16-18 HEXJAM	2
34	313418	FENDER, RER	1
35	44811	SCREW, 1/4-20 X .75 WAHTAP	4
36	305645	FENDER SUPPORT	2
37	995346	SCREW, 1/4-20 X .50 WAHTAP	4
-38	12590	FASTENER, VELCRO, 2" X 1"	2
	335506	PARTS MANUAL	1
	516307	GRASS CATCHER MANUAL (ENGLISH)	1
	318355	GRASS CATCHER MANUAL (FRENCH)	1
	313354	GRASS CATCHER MANUAL (GERMAN)	1
	3 3 5 4 9 4	OPERATOR'S MANUAL (FRENCH)	1

TRACTEUR TONDEUSE 30" MODÈLE F3595-030

KEY#	PART#	DESCRIPTION	QTY
1	314227-881	FRAME, RER	1
2	309612	FOOT PAD, RH, NOMA, 8/32	1
3	309613	FOOT PAD, LH, NOMA, 8/32, RER, BLACK	1
4	309235	FASTENER, RATCHET, BLACK	12
6	332198	CONSOLE, C-2 NOMA, RER, BLACK	1
6	995346	SCREW, 1/4-20 X .50 WAHHTAP	4
7	303130	HEADLIGHT ASSEMBLY, NOMA, RER	1
8	303260	CLIP, TINNERMAN	4
9	308347	SCREW, #6-32 X .50 PHPNHMA	4
10	330969-881	SUPPORT, SEAT W/LIFT SLOT	1
11	48901	SCREW, 5/16-18 X .63 WAHHC	2
12	180077	SCREW, 5/16-18 X .75 HHC	2
13	1498	NUT, 5/16-18 REGHEXCTRLK	4
14	301330-853	SEAT BRACKET	1
15	180120	SCREW, 3/8-16 X .75 HHC	2
16	1499	NUT, 3/8-16 REGHXCTRLK	2
17	313476-853	SEAT PLATE	1
18	20507	BOLT, .437 X .166 HSSH, 5/16-18	2
19	1 4 9 8	NUT, 5/16-18 REGHEXCTRLK	2
20	331106-853	SEAT/SHIFT SUPPORT, FOR M#28	1
21	180079	SCREW, 5/16-18 X 1.00 HHC	2
22	1498	NUT, 5/16-18 REGHEXCTRLK	2
23	35498	SCREW, 5/16-18 X .75 WAHHTAP	1
24	180077	SCREW, 5/16-18 X .75 HHC	2
25	45802	WASHER, FLAT 333 X .87X .199	2
26	1498	NUT, 5/16-18 REGHEXCTRLK	2
27	319136	SPRING, GOMP, .97X 2.00-X .095	1
28	120392	WASHER, FIAT .281 X .63X .065	1
2 9	180016	SCREW, 1/4-20 X .50 HHC	1
30	1502	NUT, 1/4-20 REGHEXCTRLK	1
31	53446	PIN, 5/16-18, HOOD LATCH	2
32	120386	WASHER, FLAT 312X .73X .065	5
33	124624	NUT, 5/16-18 HEXJAM	2
34	313418	FENDER, RER	1
3 5	4481.1	SCREW, 1/4-20 X .75 WAHHTAP	4
36	305645	FENDER SUPPORT	2
37	995346	SCREW, 1/4-20 X .50 WAHHTAP	4
38	1 2 5 9 9	FASTENER, VELCRO, 2" X 1"	2
	335506	PARTS MANUAL	1
	318307	GRASS CATCHER MANUAL (ENGLISH)	1
	318355	GRASS CATCHER MANUAL (FRENCH)	1
	318354	GRASS CATCHER MANUAL (GERMAN)	1
	335494	OPERATOR'S MANUAL (FRENCH)	1

ENSEMBLE DE DIRECTION



TOUTES PIÈCES NON

UTILISEZ PIÈCES D'ORIGINE
CONSERVER GARANTIE

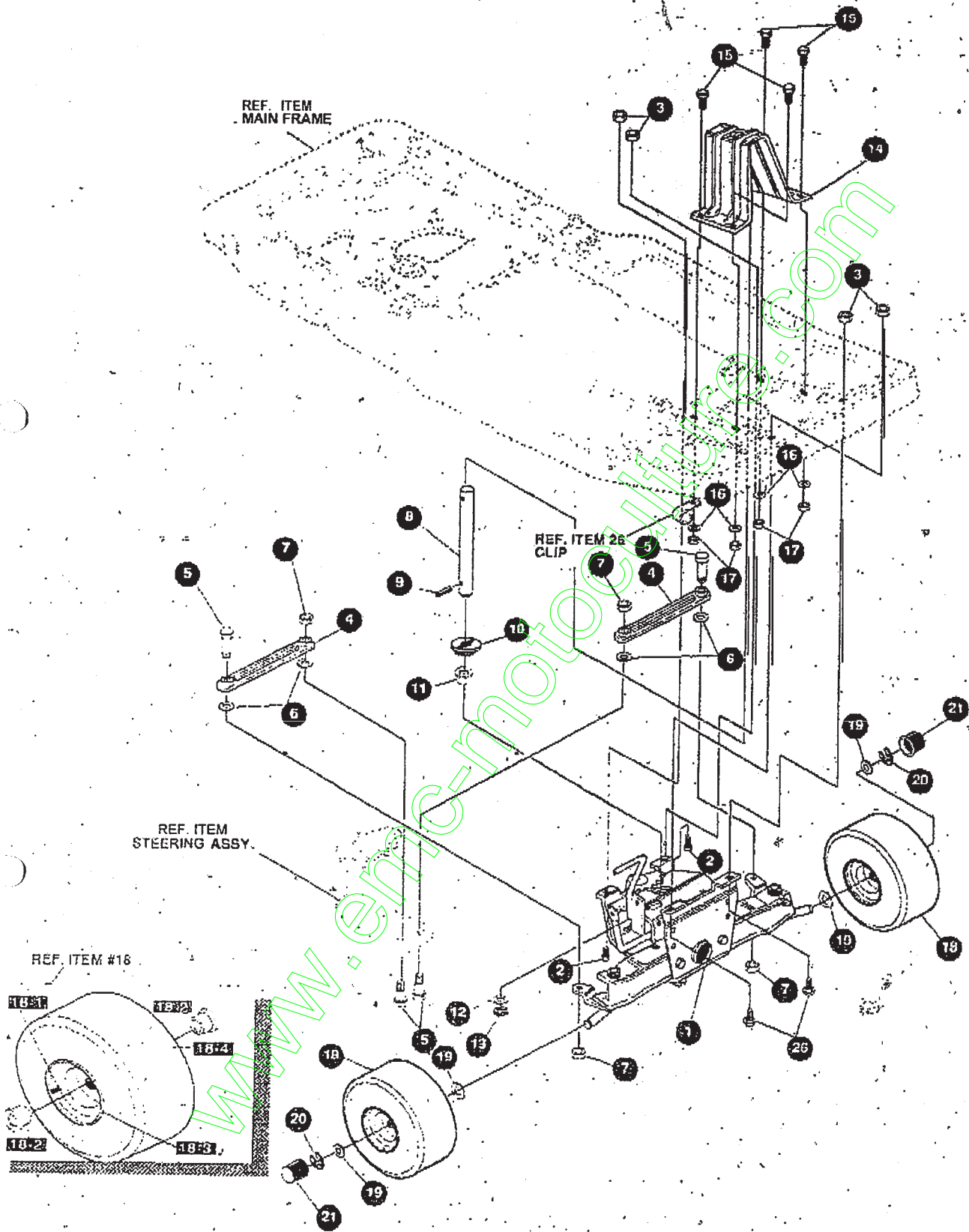
OPOSEES.

01.6219

TRACTEUL TONDEUSE 30" MODÈLE F3595-030

KEY#	PART#	DESCRIPTION	QTY.
1	3 1 6 2 1 6 ;	ASSEMBLY, SPINDLE LH 30 36, RER	1
2	12552	BUSHING, SPINDLE	2
3	4107	WASHER, FLAT .635 X 1.31 X .07	2
4	20859	RING, RET E .48 X .04 TRU 5133-62	1
5	316217	ASSEMBLY, SPINDLE, RH, 30, 36, RER	1
6	12552	BUSHING, SPINDLE	2
7	4107	WASHER, FLAT .635 X 1.31 X .07	2
8	20859	RING, RET E .48 X .04 TRU 5133-62	1
9	3 1 4 2 2 8	BRACKET, AXLE, OUTER, FRONT	1
10	323904	HANGER, BLACK	1
11	180077	SCREW, 5/16-18 X .75 HHC	2
1 2	1498	NUT, 5/16-18 REGHEXCTRLK	2
13	302799	AXLE BRACKET, INNER	1
14	35497	SCREW, 5/16-18 X .50 WAHHTAP	4
15	180138	SCREW, 3/8-16 X 3.00 HHC	2
1 6	1499	NUT, 3/8-16 REGHXCTRLK	2
17	302958	STEERING ASSEMBLY, RER	1
1 8	302760	CLAMP .625 DIA	2
19	180077	SCREW, 5/16-18 X .75 HHC	4
20	1 4 9 8	NUT, 5/16-18 REGHEXCTRLK	4
21	303249	BRAKE ARM ASSEMBLY	1
22	302955	LATCH, PARKING BRAKE	1
23	3275	BOLT, .373 X .140 HSSH, 1/4-20	1
24	1502	NUT, 1/4-20 REGHEXCTRLK	1
25	1 4 1 1 2	BRACKET, CLUTCH & BRAKE	1
26	35497	SCREW, 5/16-18 X .50 WAHHTAP	4
27	323904	HANGER, BLACK	1
28	309051	ROCKER ARM, MOWER ENGAGEMENT	1
29	310364	BOLT, .500 X 1.18 HSSH, 3/8-16	1
30	845	WASHER, FIAT .390 X 1.25 X .119	1
31	1499	NUT, 3/8-16 REGHXCTRLK	1
33	180077	SCREW, 5/16-18 X .75 HHC	2
34	120393	WASHER, FLAT .34 X .69 X .065	2
35	1498	NUT, 5/16-18 REGHEXCTRLK	2

ENSEMBLE DE ROUES



UTILISEZ DES PIÈCES D'ORIGINE POUR
CONSERVER L'APPLICATION DE LA GARANTIE -

- TOUTES LES PIÈCES NON
RÉFÉRÉES SONT
INTERCHANGEABLES AVEC
LEURS OPPOSÉES :

316220 F

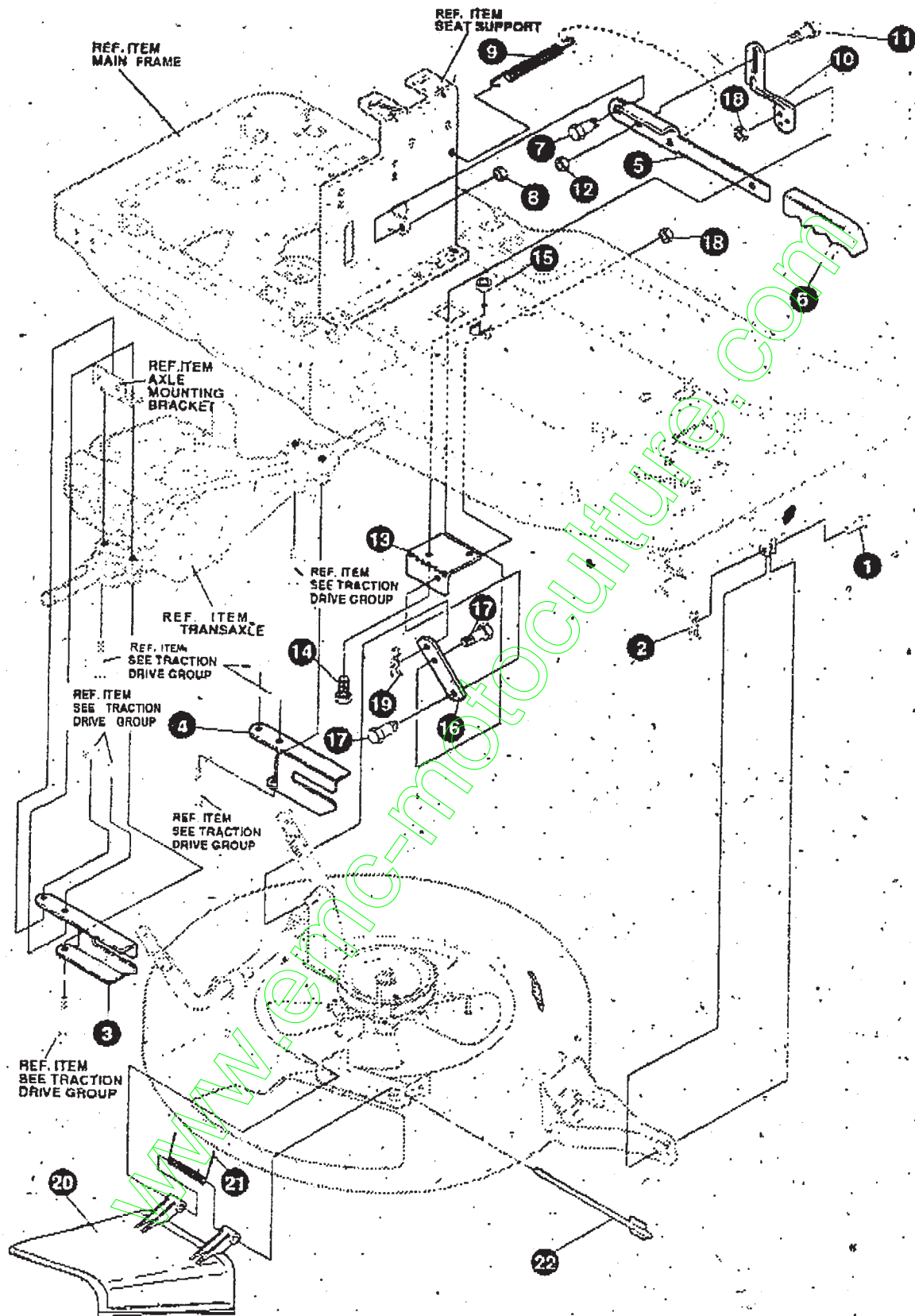
TRACTEUR TONDEUSE 30" MODÈLE F3595-030

KEY#	PART#	DESCRIPTION	QTY
1		ASSEMBLY, FRONT AXLE PIVOTING.....	1
2	57072	BOLT, 5/16-18 X .63 CARRLN.....	2
3	45174	NUT, 5/16-18 HEXWDFLLK WHIZ.....	4
4	303148	TIE ROD, RER.....	2
5	180124	SCREW, 3/8-16 X 1.25 HHC.....	4
6	120382	WASHER, REGSPTLK .393 X .68 X .10.....	4
7	1498	NUT, 3/8-16 REGHXCTRLK.....	4
8	323906	SHAFT, STEERING, BLACK.....	1
9	454565	PIN, SPRING .250 DIA X 1.25 LONG.....	1
10	302766	GEAR, PINION.....	1
11	304010	BUSHING, STEERING.....	1
12	4107	WASHER, FLAT .635 X 1.31 X .07.....	1
13	20859	RING, RET E .48 X .04 TRU 5133-62.....	1
14	306553	SUPPORT, STEERING, BLK 853.....	1
15	48901	SCREW, 5/16-18 X .63 WAHHC.....	4
16	120393	WASHER, FLAT .344 X .69 X .065.....	4
17	1498	NUT, 5/16-18 REGHEXCTRLK.....	4
18		TIRE & RIM, PU 11 X 4.0 X 5.....	2
18-1	24167	VALVE STEM.....	
18-2	301137	BEARING, FLANGE.....	
18-3	301175	RIM, WHEEL.....	
18-4	42295	TIRE, 11 X 4 X 5.....	
19	40677	WASHER, FLAT .640 X 1.25 X .06.....	4
20	20859	RING, RET E .48 X .04 TRU 5133-62.....	2
21	36832	HUB CAP, PLASTIC, BLACK.....	2
26	180077	SCREW, 5/16-18 X .75 HHC.....	2

ORDER INDIVIDUAL PARTS

www.emc-tractor.com

ENSEMBLE DE SUSPENSION DE LA TONDEUSE



UTILISEZ DES PIÈCES D'ORIGINE POUR
CONSERVER L'APPLICATION DE LA GARANTIE

TOUTES LES PIÈCES NON
REFEREES SONT
INTERCHANGEABLES AVEC
LEURS OPPOSEES.

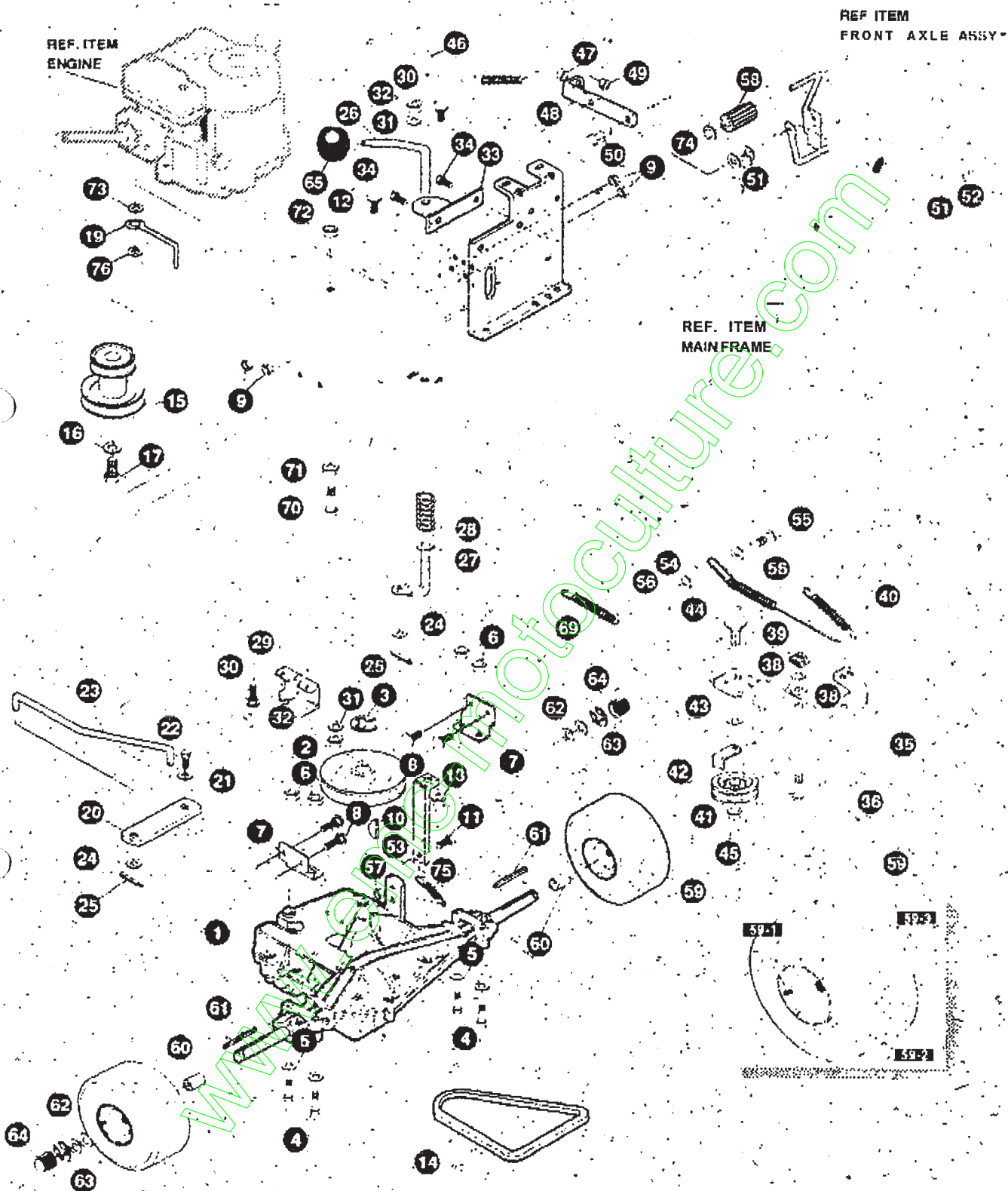
332180 A.

TRACTEUR TONDEUSE 30" MODÈLE F3595-030

KEY#	PART#	DESCRIPTION	QTY
1	47817	PIN, CLEVIS, LONG	1
2	56180	PIN, HAIR .091 OIA X 1.62 LONG	1
3	321371	BRACKET, REAR SUPPORT, RH	1
4	3 2 1 3 7 0	BRACKET, REAR SUPPORT, LH	1
5	313719-853	HANDLE, HEIGHT ADJUST	1
6	3 1 3 7 6 3	GRIP, HANDLE, LIFT, BLACK	1
7	54855	BOLT, .500 X .345 HSSH 3/8-16	1
8	1 4 9 9	NUT, 3/8-16 REGHXCTRLK	1
9	35410	SPRING, .071 X .62 X 4.37	1
10	3 2 3 8 9 7	BRACKET, LINK, UPPER, BLACK	1
11	54855	BOLT, .500 X .345 HSSH, 3/8-16	1
12	1 4 9 9	NUT, 3/8-16 REGHXCTRLK	1
13	323898	BRACKET, REAR FRAME, BLACK	1
14	180079	SCREW, 5/16-18 X 1.00 HHC	1
15	1498	NUT, 5/16-18 REGHEXCTRLK	1
16	3 2 3 8 9 9	BRACKET, LINK, LOWER, BLACK	1
17	3 1 3 5 6 0	BOLT, .500 X .225 HSSH, 5/16-18	2
18	1498	NUT, 5/16-18 REGHEXCTRLK	2
19	8260	PIN, HAIR .091 OIA X 1.66 LONG	1
20	315314	CHUTE DEFLECTOR, 30" DECK	1
21	314975	SPRING, TORSION, CHUTE DEFLECTOR	1
22	304424	ROD, PIVOT DECK .512 D'X 7.25	1

www.emc.com

ENTRAINEMENT



UTILISEZ DES PIÈCES D'ORIGINE POUR
CONSERVER L'APPLICATION DE LA GARANTIE

TOUTES LES PIÈCES NON
REFEREES SONT
INTERCHANGEABLES AVEC
LEURS OPPOSEES.

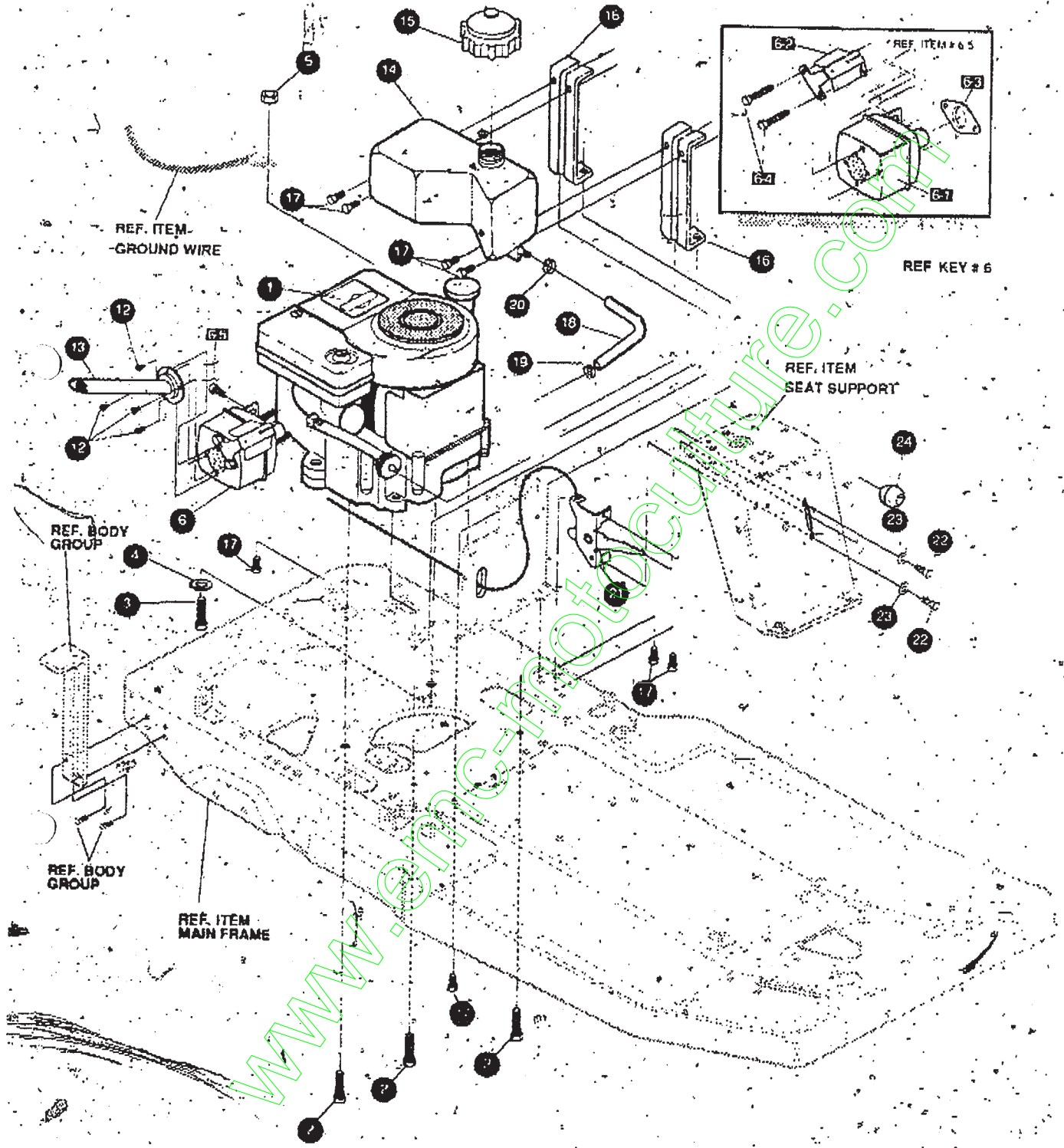
11.017M

TRACTEUR TONDEUSE 30" MODÈLE E3595-030

KEY#	PART#	DESCRIPTION	QTY
1	A	TRANSAXLE, 5-SPEED, FOOT, RER	1
2	303109	PULLEY, 6.6 OD, V4L, T/A	1
3	22053	RING, RETEX .58 X .035 TRU 5100-62	1
4	180113	SCREW, 5/16-18 X 3.00 HHC	4
5	120393	WASHER, FLAT .344 X .69 X .065	4
6	1498	NUT, 5/16-18 REGHEXCTRLK	4
7	9796	BRACKET, TRANSAXLE	2
8	57072	BOLT, 5/16-18 X .63 CARRLN	4
9	1498	NUT, 5/16-18 REGHEXCTRLK	4
10	321376	BRACKET, TRANSAXLE SUPPORT	1
11	35498	SCREW, 5/16-18 X .75 WAHTAP	1
12	57072	BOLT, 5/16-18 X .63 CARRLN	1
13	1498	NUT, 5/16-18 REGHEXCTRLK	1
14	300575	BELT, V4L, 34.00	1
15	3 2 8 0 4 0	PULLY, ENGINE 3.315 OF/5.5 D/3.00 D	1
16	120383	WASHER, REGSPTLK .459 X .76 X .12	1
17	182761	SCREW, 7/16-20 X 2.50 HHC	1
19	55488	BELT GUIDE	1
20	323874	SHIFT LEVER BRACKET, BLACK	1
21	5 7 1 5 7	WASHER, .750 X .250, SP-TRANSAXLE	1
22	56255	SCREW, 1/4-28 X .75 NYLHHC	1
23	323873	SHIFT ROD, BLACK	1
24	120394	WASHER, FLAT .406 X .81 X .065	2
25	137185	PIN, COTTER .125 DIA X 1.00 LONG	2
26	309255	HANDLE, SHIFT	1
27	120396	WASHER, FLAT .531 X 1.06 X .095	1
28	301133	SPRING, SHIFT LEVER	1
29	309053	BRACKET, DETENT SHIFT	1
3 0	126216	BOLT, 5/16-18 X .75 CARRLN	2
31	120393	WASHER, FLAT .344 X .69 X .065	2
32	1498	NUT, 5/16-18 REGHEXCTRLK	2
33	303098-853	BRACKET, SHIFT CONTROL	1
34	995346	SCREW, 1/4-20 X .50 WAHTAP	2
35	12593	PIVOT ARM, IDLER	1
36	329989	BOLT, .625 X .136 HHSH, 5/16-18	1
38	45602	WASHER, FLAT .333 X .87 X .1 19	2
39	301124	TINNERMAN CLIP	1
40	3.5430	SPRING, .071 X .62 X A37	1
41	35374	PULLEY, IDLER V4L, 3.06 X .62	1
42	39659	RETAINER, BELT	1
43	274517	WASHER, FLAT .406 X .73 X .063	1
44	45692	BOLT, 3/8-16 X 1.50 CARRSN	1
4 5	1498	NUT, 3/8-16 REGHEXCTRLK	1
46	323532	ROD, CLUTCH, RER, BLACK	1
47	271184	NUT, 5/16-18 HEXKEPS	1
48	321378	BRACKET, CLUTCH/BRAKE	1
49	1498	NUT, 5/16-18 REGHEXCTRLK	1
50	39522	PIN, CLEVIS .312 X .812	1
51	120393	WASHER, FLAT .344 X .69 X .065	3
52	8260	PIN, HAIR .091 DIA X 1.66 LONG	1
54	309251	SPRING, BRAKE	1
55	2 5 0 8 6	BOLT, .500 X .375 HHSH, 5/16-18	1
5 6	308188	WASHER, FLAT .515 X 1.31 X .09	2
57	1498	NUT, 5/16-18 REGHEXCTRLK	1
58	52840	FOOT PEDAL	1
5 9		TIRE & RIM, PU 16 X 6.5 X 8	2
59-1	24167	VALVE STEM	1
59-2	36182	RIM, WHEEL	1
59-3	41081	TIRE, 16 X 6.5 X 8	1
60	310333	SPACER, SLEEVE .75 X 1.25 X 2.06	2
61	5 2 9 2 8	KEY, SQUARE .187 SQUARE X 2.25 LONG	2
62	42815	WASHER, FLAT .755 X 1.53 X .07 4	1
63	36625	RING, RETEX .57 X .05 TRU 5133-75	2
64	40394	HUB CAP, 1.500 ID X 7/8 LONG	2
65	55514	KNOB, ROUND 1.50 DIA, BL ACK	1
69	313854	IDLER SPRING	1
71	271184	NUT, 5/16-18 HEXKEPS	1
72	1498	NUT, 5/16-18 REGHEXCTRLK	1
73	1 3 8 4 8 9	WASHER, EXLK .384 X .69 X .04	1
7	44582	CAP, PUSH-ON, FITS 7/16 ROD	1
75	310155	SPRING, BRAKE RETURN	1
76	120394	WASHER, FLAT .406 X .81 X .065	1

* CONTACT YOUR NEAREST TRANSAXLE DEALER FOR PARTS & SERVICE
 * ORDER INDIVIDUAL PARTS

ENSEMBLE DE MOTEUR



UTILISEZ DES PIÈCES D'ORIGINE POUR
CONSERVER L'APPLICATION DE LA GARANTIE

TOUTES LES PIÈCES NON
REFEREES SONT
INTERCHANGEABLES AVEC
LEURS OPPOSEES.

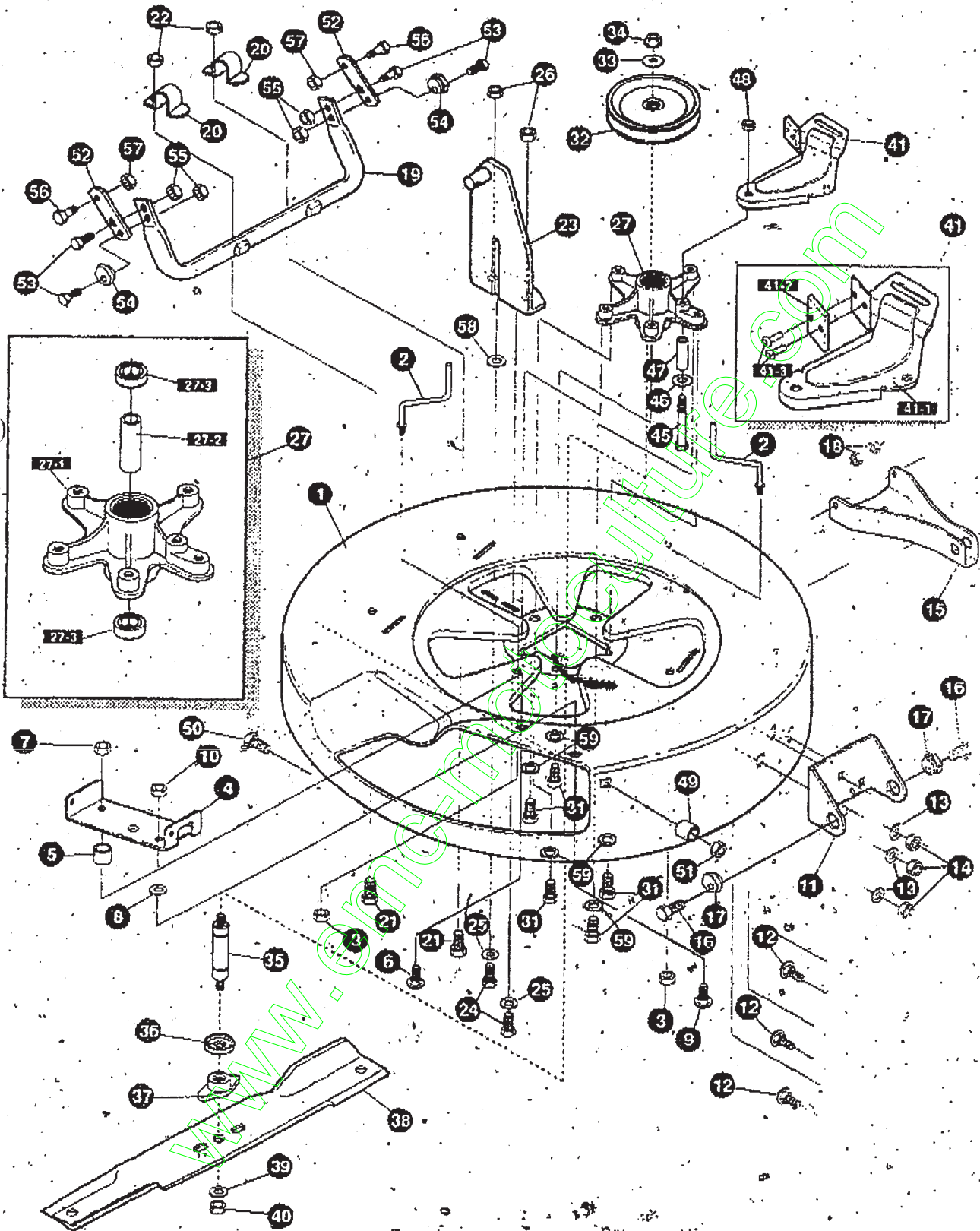
331 709 A

TRACTEUR TONDEUSE 30" MODÈLE F3595-030

KEY #	PART#	DESCRIPTION	QTY
1		ENGINE, 10-12HP, B&S, 3A	1
2	50947	SCREW, 3/8-16 X 1.25 WAHHTAP. BLACK	3
3	180083	SCREW, 5/16-18 X 1.50 HHC	1
4	138485	WASHER, EX LK .320 X .61 X .03	1
5	44108	5/16-18 HWDFLCJRLK	1
6	305404	MUFFLER ASSEMBLY, B&S, SQ, LO-TONE	1
6-1	305408	MUFFLER B&S, SQ, LO-TONE, 10-12HP	1
6-2	305409	SHIELD, MUFFLER, B&S, SQ, LOTONE	1
6-3	46708	GASKET, MUFFLER	1
6-4	305407	BOLT, .437 X 4.340 HSSH, 5/16-18	2
6-5	E	SCREW, 1/4-20 X .50 HHCSEMS	1
12	57386	SCREW, 10-16 X .50 DRILLITE	4
13	311721-853	PIPE ASSEMBLY, 10HP, B&S, EXHAUST	1
14	314986	TANK, GAS-NOMA, 1.3 GALLON, F-12	1
15	12501	CAP, FUEL 2.5" THROAT	1
16	313150-853	SUPPORT, GAS TANK, F-12	2
17	995346	SCREW, 1/4-20 X .50 WAHHTAP	8
18	47216	TUBING, .25 X .50 X BULK GAS LINE	22
19	47345	CLAMP, HOSE SCREW TYP	1
20	47345	CLAMP, HOSE SCREW TYPE	1
21	321240	THROTTLE CONTROL, RER	1
22	35287	SCREW, #8-32 X .38 HHWATAP	2
23	414106	WASHER, FLAT 188 X .38 X .040	2
24	50607	KNOB, ROUND THROTTLE, BLACK	1

SEE ENGINE MANUAL

ENSEMBLE DE CARTER DE TONDEUSE



UTILISEZ DES PIÈCES D'ORIGINE POUR
CONSERVER L'APPLICATION DE CA GARANTIE

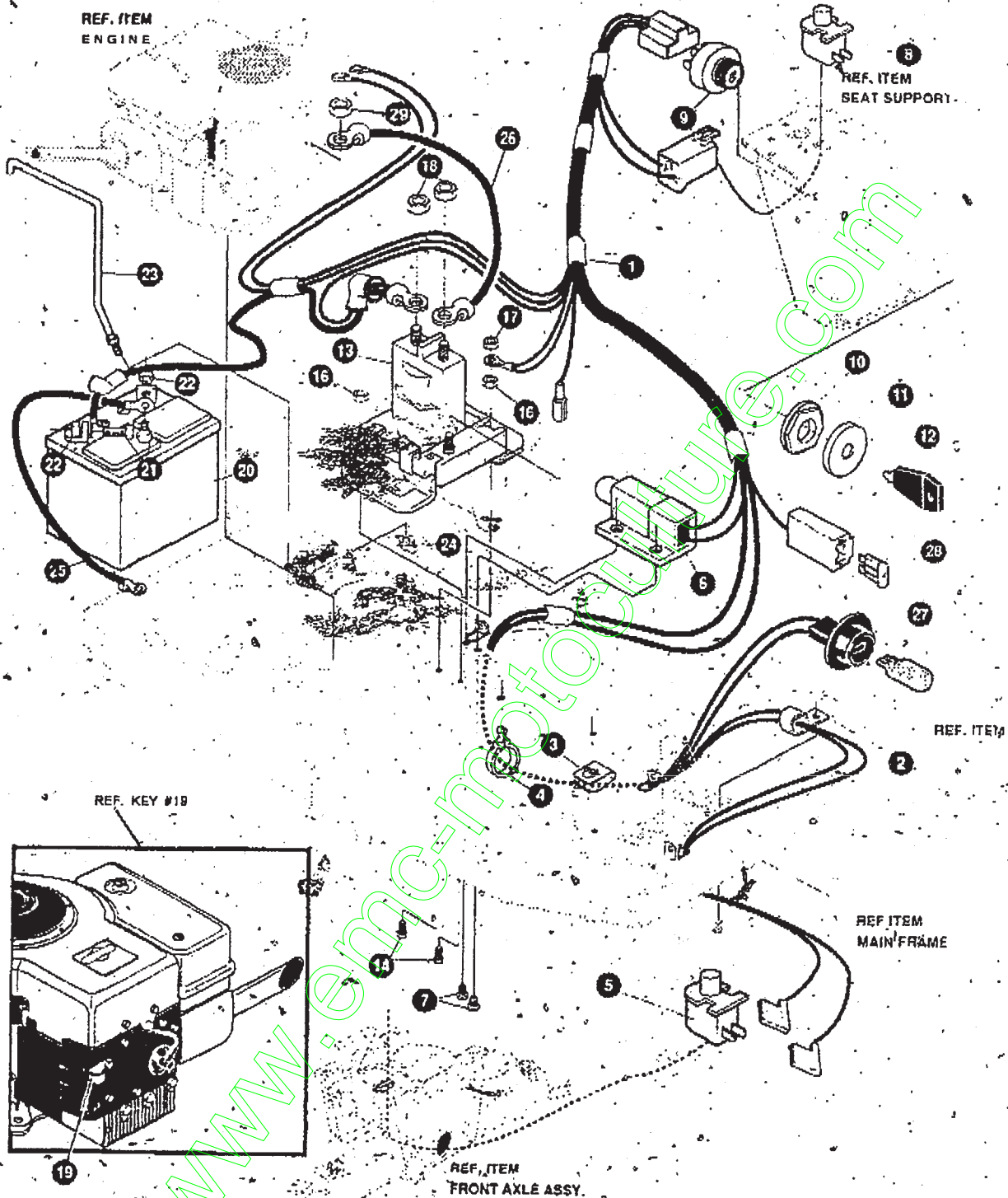
TOUTES LES PIÈCES NON
REFEREES SONT
INTERCHANGEABLES AVEC
LEURS OPPOSEES.

313589 E

TRACTEUR TONDEUSE 30" MODÈLE F3595-030

KEY#	PART#	DESCRIPTION	QTY
1	328711	DECK, MOWER 30" SF/REB	1
2	57318	GUIDE, PELT. 5/16-18 THD	2
3	1498	NUT, 5/16-18 REGHEXCTRLK	2
4	317017	BRACKET, CHUTE MOUNT, BLACK	1
5	314702	SPACER, SLEEVE .344 X 1.00 X 500	1
6	120230	BOLT, 5/16-18 X 1.25 CARRLN-	1
7	1498	N-UT, 5/16-18 REGHEXCTRLK	1
8	45602	WASHER, FLAT 333 X 87 X 119	1
9	126216	BOLT, 5/16-18 X .75 CARRLN	1
10	1498	NUT, 5/16-18 REGHEXCTRLK	1
11	311237	BRACKET, MOUNTING, FRONT	1
12	57072	BOLT, 5/16-18 X .63 CARRLN.....	3
13	120393	WASHER, FLAT 344 X 69 X .065	3
14	1498	NUT, 5/16-18 REGHEXCTRLK	3
15	311236	BRACKET, BAR, TOW, FRONT	1
16	180079	SCREW, 5/16-18 X 1.00 HHC	2
17	58247	NUT, ADJUST	2
18	1498	N U T , 5/16 18 REGHEXCTRLK	2
19	313372	ASSEMBLY, TUBE, PIVOT	1
20	310672	SUPPORT, PIVOT TUBE, BLACK	2
21	180077	S C R E W . 5/16-18 X .75 HHC	2
22	1498	NUT, 5/16-18 REGHEXCTRLK	2
23	314119	ASSEMBLY, LIFT BRACKET	1
24	180077	SCREW, 5/16-18 X .75 HHC	2
25	120393	W A S H E R , F L A T 344 X 69 X .065	2
26	1498	NUT, 5/16-18 REGHEXCTRLK	2
27	313588	ASSEMBLY, QUILL	1
27-1	314272	QUILL, MACHINED CASTING	1
27-2	314274	TUBE, SPACER, STEEL	1
27-3	313576	P U L L E Y A S S E M B L Y	2
32	314273	P U L L E Y A S S E M B L Y	1
33	22265	WASHER, FLAT 515 X 138 X 119.	1
38	315071	SHIELD, CURB, MOWER	1
36	313577	SHIELD, DUST, BEARING	1
37	313584	HUB, BLADE ADAPTOR	1
38	329988	BLADE, 3.0" TO MOWER, 0.7" WING	1
39	22265	WASHER, FLAT 515 X 138 X 119	1
40	1500	NUT, 1/2-13 REGHCTRLK	1
41	12229	BRACKET, IDLER ASSEMBLY	1
41-1	313510	BRACKET, ARM, IDLER	1
41-3	306973	BRAKE PAD HARD NF343 (X-31)	1
45	41601	RIVET, OVSET 187 DIA X .50 LONG	2
46	180091	SCREW, 5/16-18 X 2.50 HHC	1
46	45602	WASHER, FLAT 333 X 87 X 119	1
47	314824	SPACER, SLEEVE 322 X 63 X .1810	1
48	44108	NUT, 5/16-18 HWDFLCTRLK	1
49	50520	S P A C E R	1
50	126216	BOLT, 5/16-18 X .75 CARRLN	1
51	1498	NUT, 5/16-18 REGHEXCTRLK	1
52	314099	BRACKET, BAR, REAR STABILIZER	2
53	180079	SCREW, 5/16-18 X .00 HHC	4
54	58247	NUT, ADJUST	4
55	1498	N U T , 5/16 18 REGHEXCTRLK	4
56	51940	BOLT, 500 X 437 HSSH, 3/8-16	2
57	1499	NUT, 3/8-16 REGHXCTRLK	2
58	45602	WASHER, FLAT 333 X 87 X 119	1
59	138405	WASHER, EXLK 320 61 X 03	5

FAISCEAU ELECTRIQUE



UTILISEZ DES PIÈCES D'ORIGINE POUR
CONSERVER L'APPLICATION DE LA GARANTIE

TOUTES LES PIÈCES NON
REFEREES SONT
INTERCHANGEABLES AVEC
LEURS OPPOSEES.

328294 B

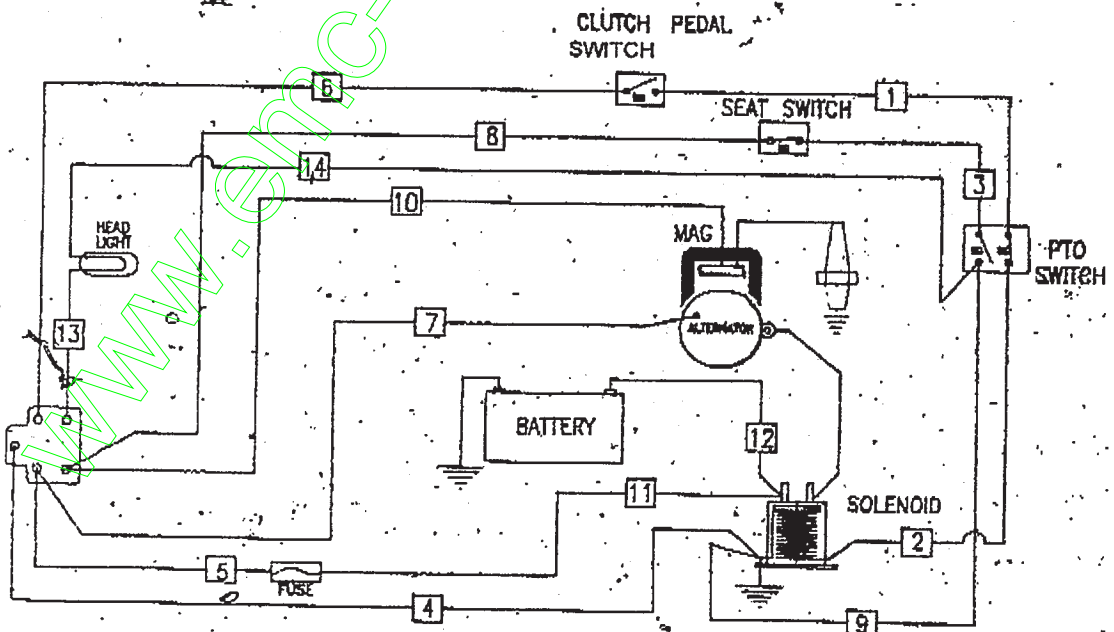
TRACTEUR TONDEUSE 30" MODÈLE F3595-030

KEY#	PART#	DESCRIPTION	QTY
1	328287	HARNESS, STD, RER, C2 8-11 HP, B&S ...	1
2	57569	RETAINER, .31 ID X .62 X .03 WIRE	1
3	3 3 5 5 0 5	CLIP, TRW #C3958-022-4	1
4	309698	CLIP, WIRE ROUTING, SNAP-IN	1
5	326653	SWITCH, SNAPMNT NO .055/116 GRV	1
6	57476	SWITCH, SCREW MOUNT, DP, NC, NO, BLACK L1	1
7	57220	SCREW, #12 X .50 PH/WH AP BLACK	2
8	326654	SWITCH, SNAP MOUNT, NC .140 BLUE	1
9	327354	SWITCH, IGNITION & LIGHTS DELTA	1
10	327352	NUT, 5/8-8, ACME DELTA FOR BOOT	1
11	3 0 0 1 9 4	BOOT, IGNITION SWITCH	1
12	327350	KEY, IGNITION SWITCH, MLD. DELTA	1
13	53716	SOLENOID	1
14	18.7745	SCREW, 1/4-20 X .75 HXSEMMA	2
15	1502	NUT, 1/4-20 REGHEXCTRLK	2
16	271172	NUT, 1/4-20 REGHEXKEPS	1
17	271187	NUT, 5/16-24 HKEPS	2
18	57569	RETAINER, .31 ID X .62 X .03 WIRE	1
19	92693	BATTERY, 6 PLATE, MAINT FREE	1
20	180020	SCREW, 1/4-20 X .75 HHC	2
21	271172	NUT, 1/4-20 REGHEXKEPS	2
22	327784	SUPPORT, BATTERY HOLDDOWN, U-I	1
23	325232	NUT, WING 1/4-20 NYLON	1
24	55511	WIRE, GROUND, 12.5"	1
25	322698	WIRE, STARTER, RED, 8.5	1
26	52572	BULB, HEADLAMP	1
27	302031	FUSE, SPADE TYPE, 32V-15A	1
28	124818	NUT, 1/4-20 REGHXJAM	1

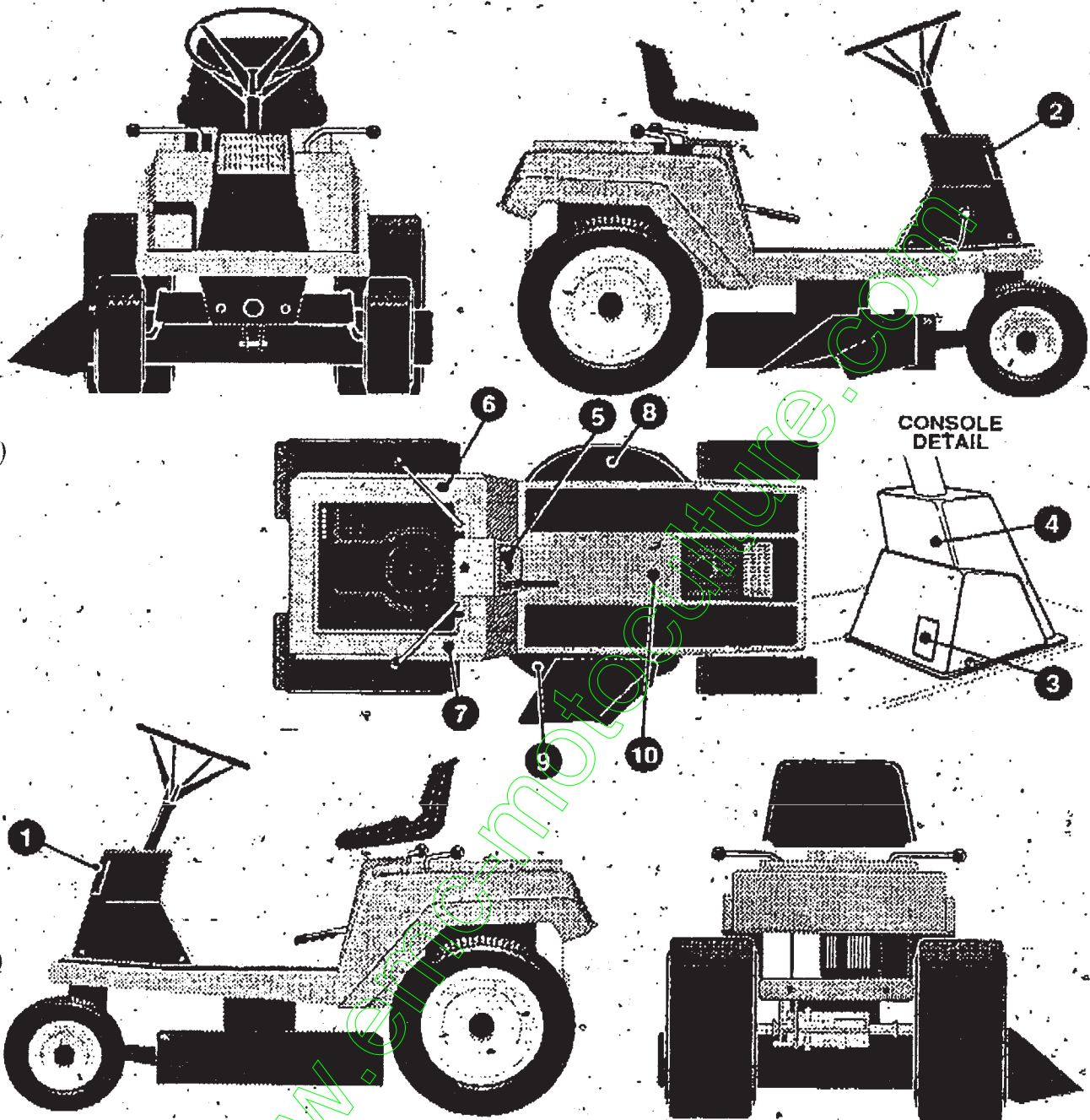
POS.	G	M	B	L	S
OFF	○	○			
RUN/LIGHTS			○	○	
RUN			○		
START			○	○	

IGNITION SWITCH
300687

IGNITION
CONNECTOR



DECALQUES



KEY# PARY#

1	306557
2	306558
3	317348
5	32074 21127
6	305397
7	311232
8	402700
9	402701
10	402689

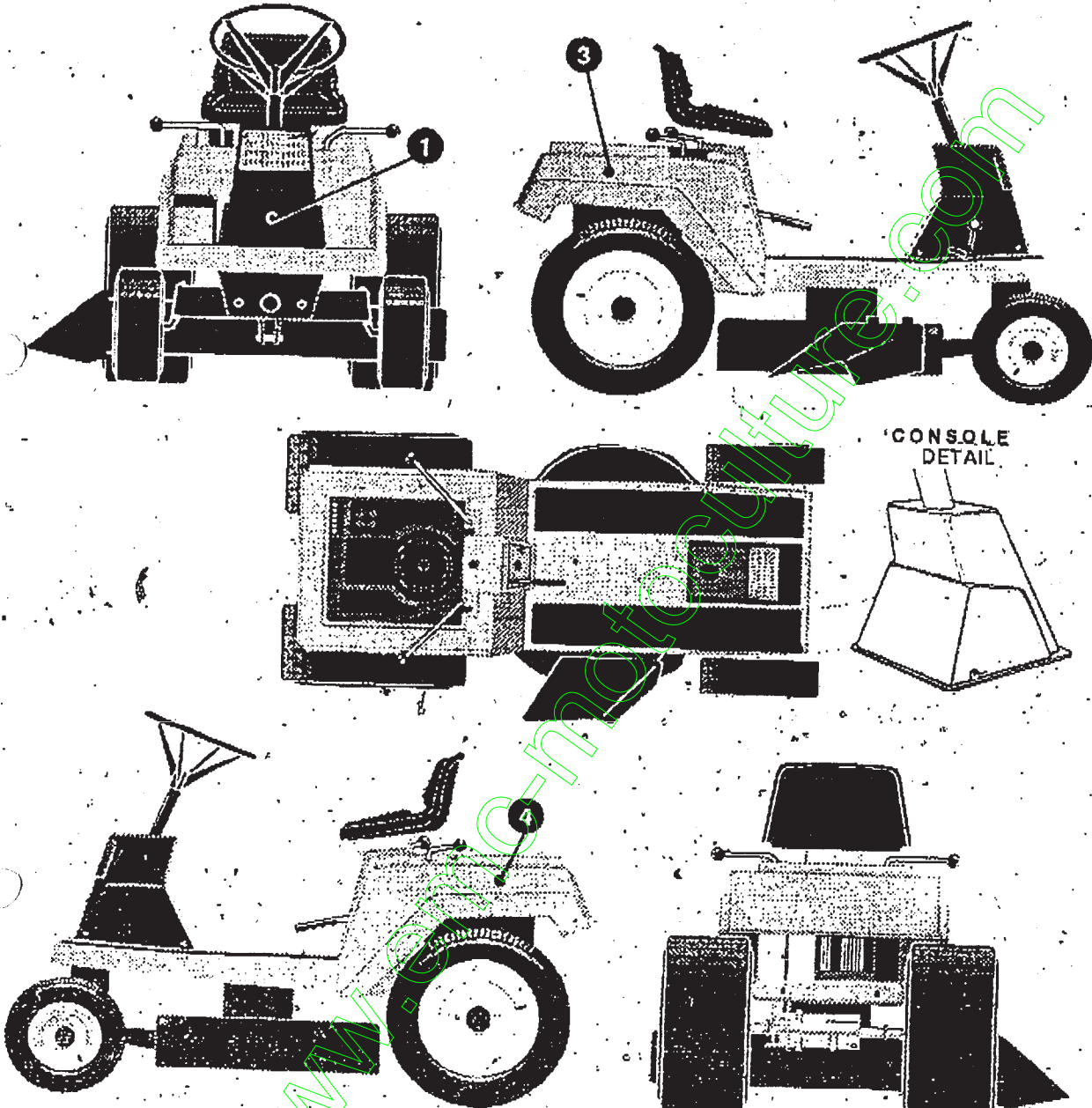
DESCRIPTION

DECAL, LENS, LH, C-2 LITE.....	1
DECAL, LENS, RH, C-2 LITE.....	1
DECAL, PARK'N/BRAKE, ISO.....	7
DECAL, HEARING PROTECTION.....	1
DECAL, CONTROL 30° W/LITE.....	1
DECAL, PTO ENGAGEMENT ISO.....	1
DECAL, SHIFT, 5SP, ISO.....	1
DECAL, CAUTION DECK LH.....	1
DECAL, CAUTION DECK RH.....	1
DECAL, CONSOLE SYMBOLIC CAUTION.....	1

Q Y Y

335186 B

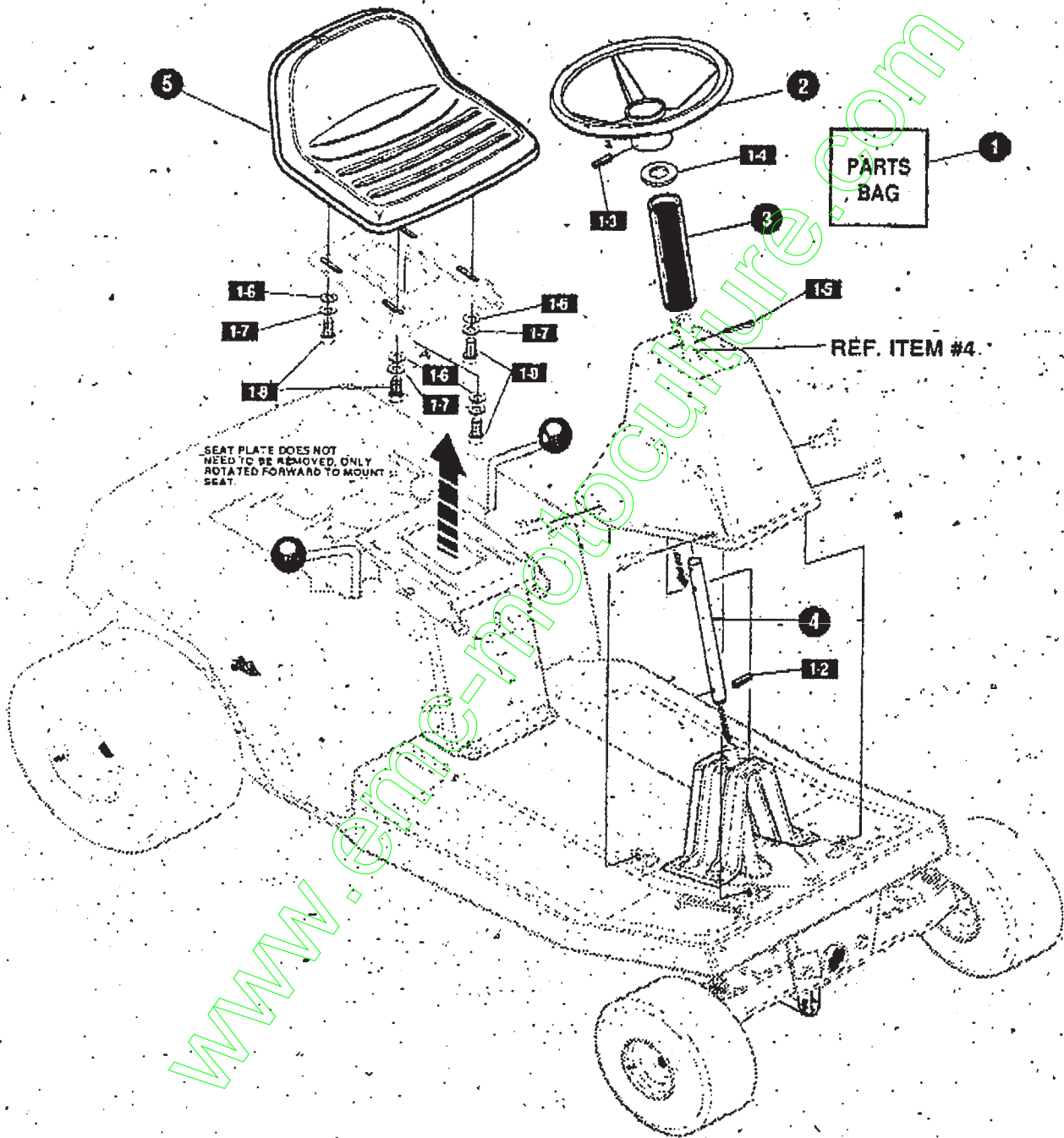
TRACTEUR TONDEUSE 30" MODÈLE F3595-030



KEY#	PART#	DESCRIPTION	QTY
1	402362	DECAL CONSOLE LADYRIDER, RER	
3	402360	DECAL FENDER, RH LADYRIDER, RER	
4	402361	DECAL FENDER LH LADYRIDER, RER	

335187.A

MONTAGE ENSEMBLE



332195 B

TRACTEUR TONDEUSE 30" MODÈLE F3595-030

KEY#	PART#	DESCRIPTION	QTY
1		PARTS BAG, RER	1
1-2	417375	PIN. SPRING, .187 DIA X 1.25 LONG	1
1-3	456836	PIN. SPRING, .250 DIA X 2.25 LONG	1
1-4	30 1702	WASHER, FLAT .90 X 1.56 X .089	1
1-5	120123	PIN, COTTER .125 DIA X 1.25 LONG	1
1-6	120393	WASHER, FLAT .344 X .69 X .065	4
1-7	120638	WASHER, HVSP TLK .328 X .60 X .09	4
1-8	180077	SCREW, 5/16-18 X .75 HHC	4
2	30.1465	STEERING WHEEL, DEEP DISH	1
3	305605	TUBE-DECORATIVE, 6.00" LONG, BLACK	1
4	300797	STEERING TUBE	1
5	332552	SEAT, MICHIGAN GEN, W/SW HOLE	1

www.emc-motocultivo.com